

PROJECT REFERENCE NO. R-2610A	SHEET NO. 22
R/W SHEET NO.	
ROADWAY DESIGN ENGINEER	HYDRAULICS ENGINEER
PRELIMINARY PLANS DO NOT USE FOR CONSTRUCTION INCOMPLETE PLANS DO NOT USE FOR R/W ACQUISITION	
CONST. REV. _____	
R/W REV. _____	

JOE A. TURNER
DB 302 PG 64
DB KN PG 158
PLATSLIDE 3-1
PLATSLIDE 9-81

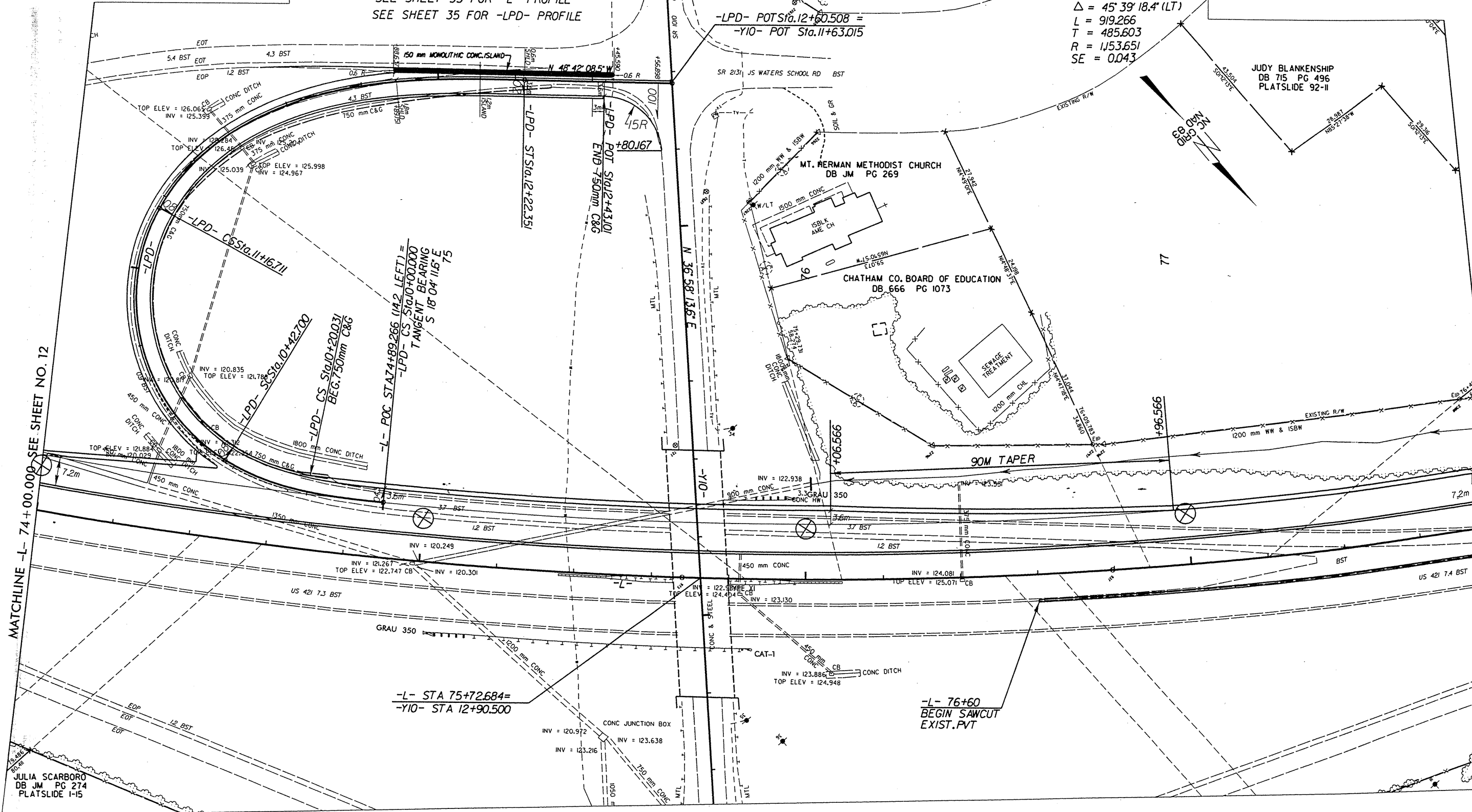
ANNE G. ASKINS
DB 665 PG 755
PLATSLIDE 9-81

-LPD-
 PIs Sta 10+28.215 PI Sta 10+88.999 PIs Sta 11+56.423
 $\theta_s = 1'04'' 01.151'$ $\Delta = 87'09'' 44.409'$ (RT) $\theta_s = 62'12'' 18.672'$
 $\theta_s = 25'09'' 00.880'$ L = 74.011 Ls = 105.639
 Ls = 42.700 T = 46.299 LT = 75.331
 LT = 28.215 R = 48.651 ST = 39.712
 ST = 15.118 SE = 08

-L-
 PI Sta 74+61.092
 $\Delta = 45'39'' 18.4'$ (LT)
 L = 919.266
 T = 485.603
 R = 1,153.651
 SE = 0.043

SEE SHEET 33 FOR -L- PROFILE
 SEE SHEET 35 FOR -LPD- PROFILE

-LPD- POT Sta. 12+60.508 =
-Y10- POT Sta. 11+63.015



MATCHLINE -L- 74+00.000 SEE SHEET NO. 12

MATCHLINE -L- STA. NO. 77+80.000 SEE SHEET NO. 23

-L- STA 75+72.684 =
-Y10- STA 12+90.500

-L- 76+60
 BEGIN SAWCUT
 EXIST. PVT

JULIA SCARBORO
DB JM PG 274
PLATSLIDE 1-15

JUDY BLANKENSHIP
DB 715 PG 496
PLATSLIDE 92-11

MT. HERMAN METHODIST CHURCH
DB JM PG 269

CHATHAM CO. BOARD OF EDUCATION
DB 666 PG 1073

SEWAGE TREATMENT

77

US 421 7.4 BST

 11/15/10
 JSC
