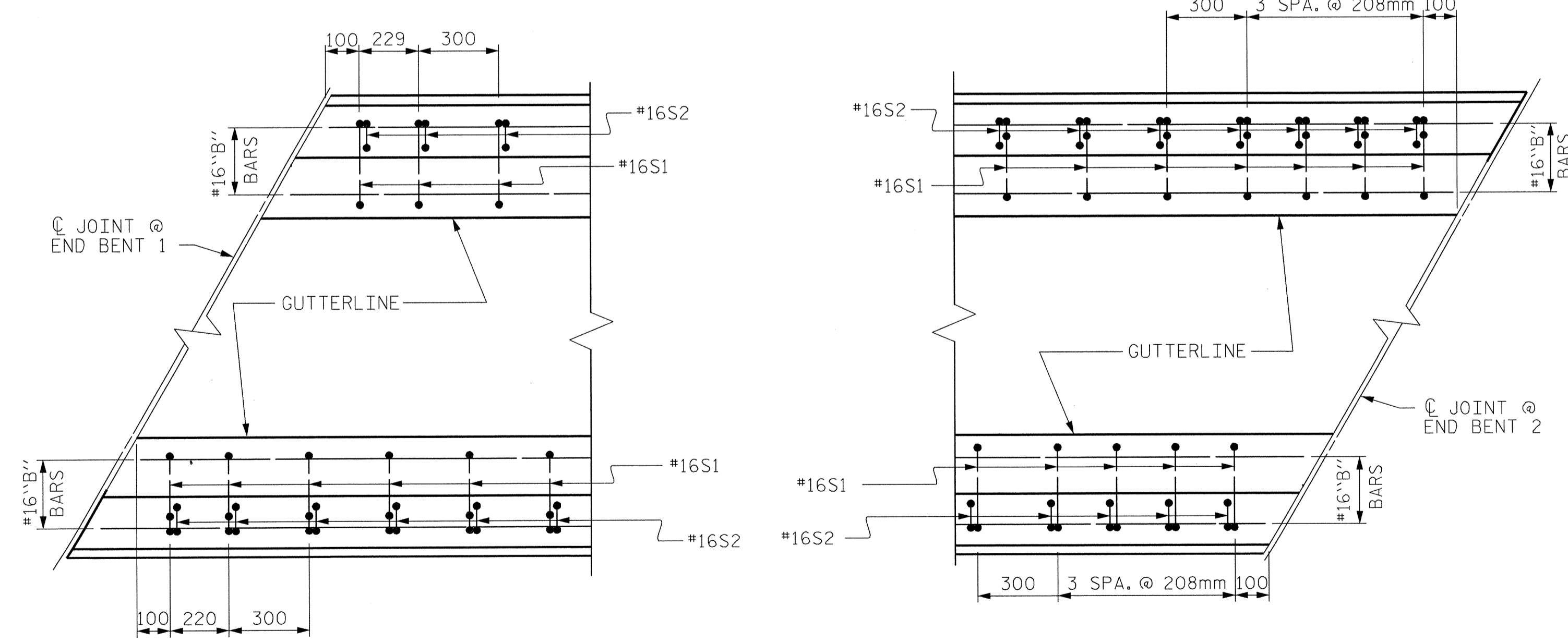


PLAN OF BARRIER RAIL

▲ SEE "END OF RAIL DETAILS" FOR ADDITIONAL REINFORCEMENT.



PLAN PLAN
END OF RAIL DETAILS

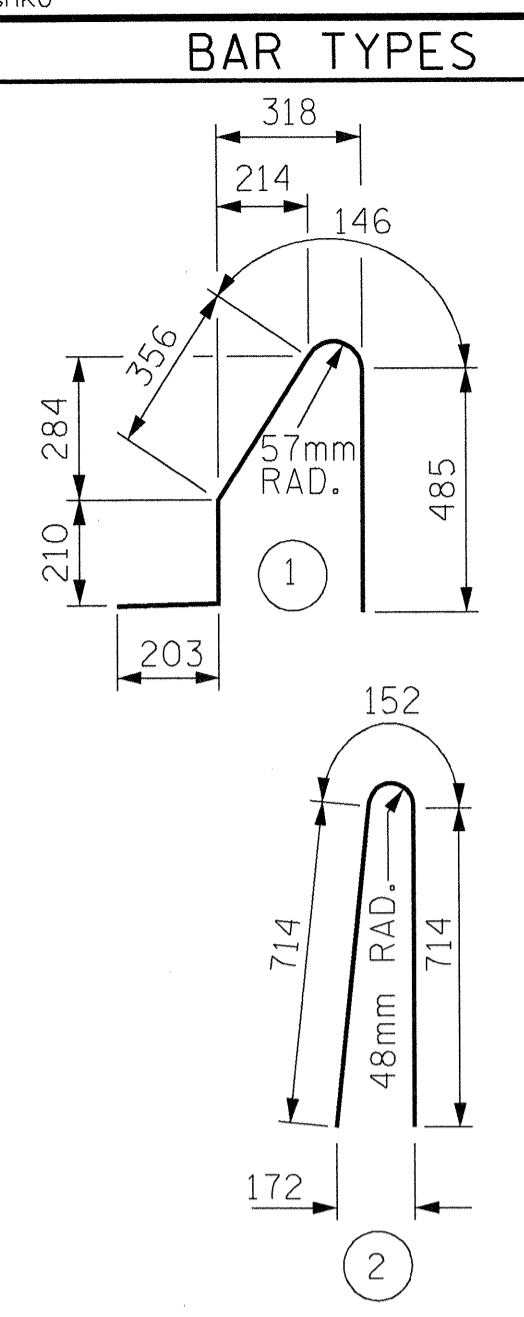
NOTES

THE BARRIER RAIL IN EACH SPAN SHALL NOT BE CAST UNTIL ALL SLAB CONCRETE IN THAT SPAN HAS BEEN CAST AND HAS REACHED A MINIMUM COMPRESSIVE STRENGTH OF 20.7 MPa.

ALL REINFORCING STEEL IN BARRIER RAILS SHALL BE EPOXY COATED.

VERTICAL GROOVED CONTRACTION JOINTS, 12mm IN DEPTH, SHALL BE TOOLED IN ALL EXPOSED FACES OF THE BARRIER RAIL AND IN ACCORDANCE WITH ARTICLE 825-10(B) OF THE STANDARD SPECIFICATIONS. THE CONTRACTION JOINT SHALL BE LOCATED AT EACH THIRD POINT BETWEEN BARRIER RAIL EXPANSION JOINTS. ONLY ONE CONTRACTION JOINT IS REQUIRED AT MIDPOINT OF BARRIER RAIL SEGMENTS LESS THAN 6.1m IN LENGTH AND NO CONTRACTION JOINTS ARE REQUIRED FOR THOSE SEGMENTS LESS THAN 3.5m IN LENGTH.

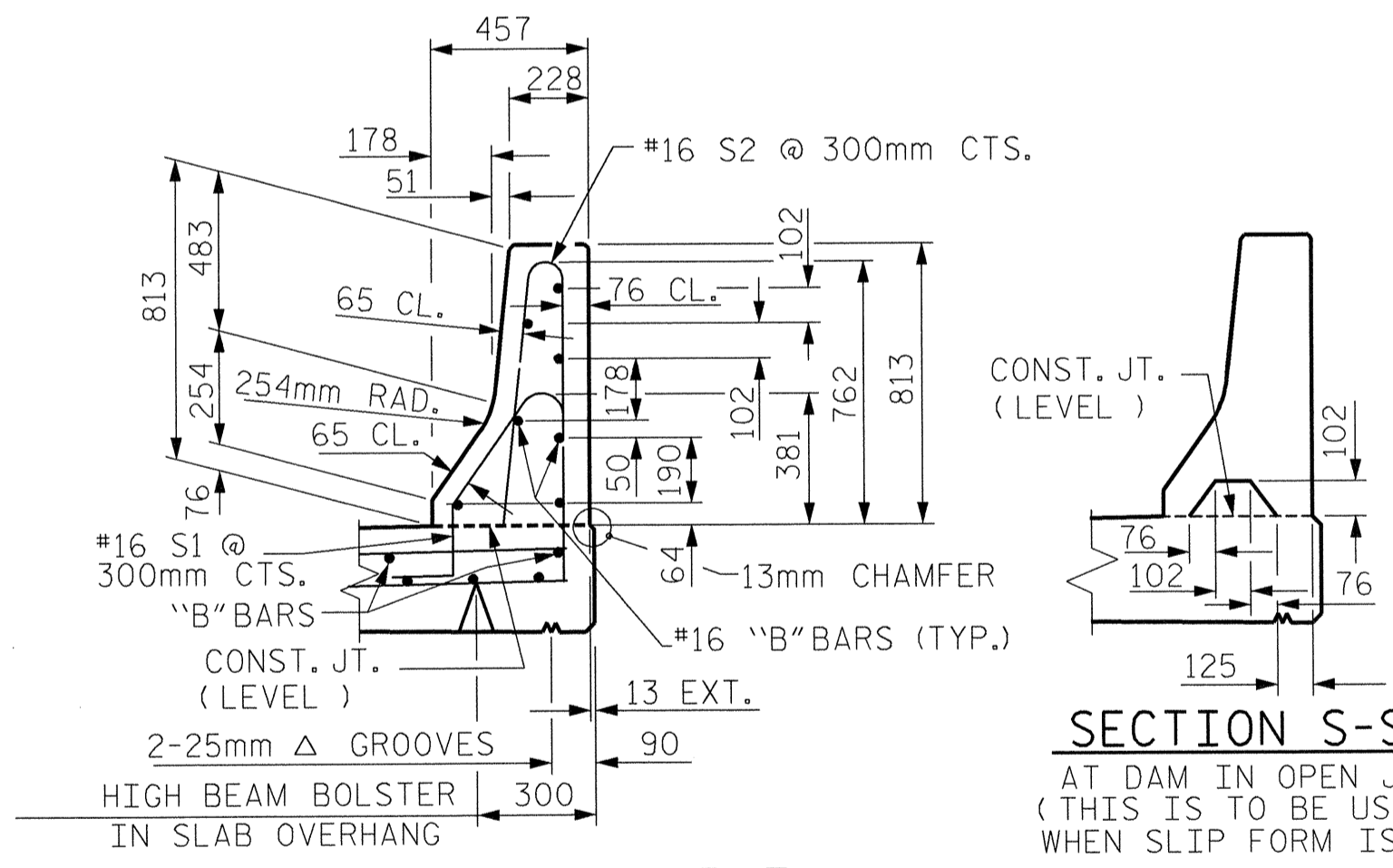
ARMORED EVAZOTE JOINTS ARE REQUIRED AT END BENTS.



ALL BAR DIMENSIONS ARE OUT TO OUT

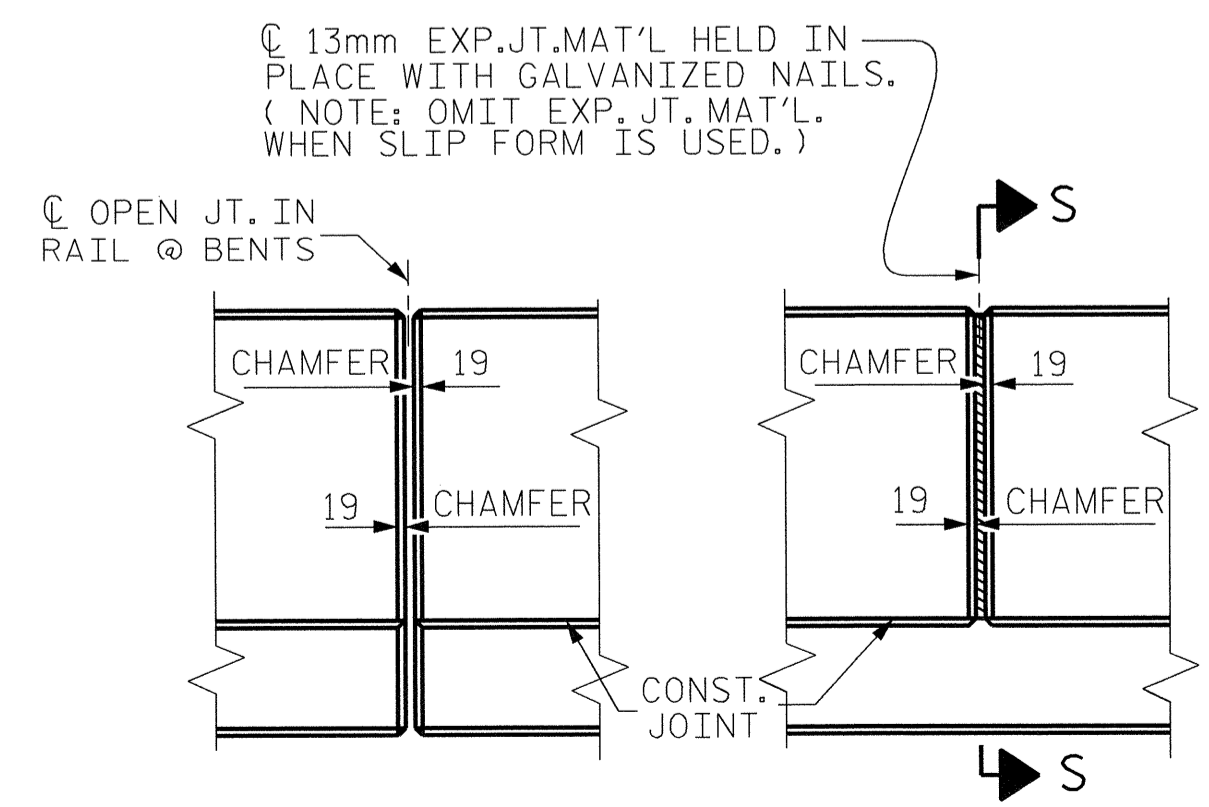
BILL OF MATERIAL
 FOR CONCRETE BARRIER RAIL ONLY

BAR	NO.	SIZE	TYPE	LENGTH	WEIGHT
* B10	14	#16	STR	5460	119
* B11	42	#16	STR	5600	365
* B12	28	#16	STR	5340	232
* B13	14	#16	STR	6160	134
* S1	268	#16	1	1400	582
* S2	268	#16	2	1580	657
* EPOXY COATED REINFORCING STEEL					2,089 kg
CLASS AA CONCRETE					20.0 CU. METER
CONCRETE BARRIER RAIL					79.688 METERS



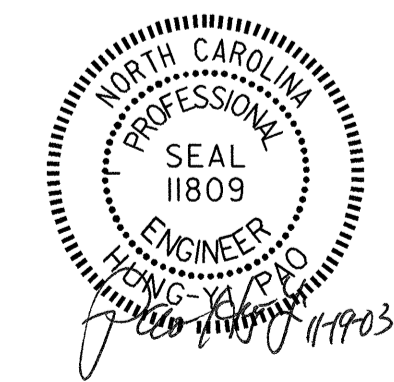
SECTION THRU RAIL

SECTION S-S
 AT DAM IN OPEN JOINT
 (THIS IS TO BE USED ONLY WHEN SLIP FORM IS USED)



ELEVATION AT EXPANSION JOINTS
BARRIER RAIL DETAILS

PROJECT NO. R-2610A
 CHATHAM COUNTY
 STATION: 18+04.666 -L-



STATE OF NORTH CAROLINA
 DEPARTMENT OF TRANSPORTATION
 RALEIGH

SUPERSTRUCTURE
CONCRETE BARRIER RAIL
 (LEFT LANE BRIDGE)

REVISIONS				SHEET NO.	
NO.	BY:	DATE:	NO.	BY:	DATE:
1			3		
2			4		

TOTAL SHEETS: 17
 SHEET: 8

Stantec Consulting Services Inc.
 Suite 300, 801 Jones Franklin Road
 Raleigh, NC 27606
 Tel. 919.851.6866
 Fax. 919.851.7024
 www.stantec.com

ASSEMBLED BY :	M. J. OSTRISHKO	DATE :	8-11-03
CHECKED BY :	H. PAO	DATE :	10-6-03
DRAWN BY :	ARB 5/87	REV. 8/16/99	RWW/LES
CHECKED BY :	SJD 9/87	REV. 10/17/00	RWW/LES
		REV. 5/7/03	RWW/JTE