

**NOTES**

FOR ELASTOMERIC BEARINGS, SEE SPECIAL PROVISIONS.

AT ALL FIXED POINTS OF SUPPORT, NUTS FOR ANCHOR BOLTS ARE TO BE TIGHTENED FINGER TIGHT AND THEN BACKED OFF 1/2 TURN. THE THREAD OF THE NUT AND BOLT SHALL THEN BE BURRED WITH A SHARP POINTED TOOL.

THE 51mm Ø PIPE SLEEVE SHALL BE CUT FROM SCHEDULE 40 PVC PLASTIC PIPE. THE PVC PLASTIC PIPE SHALL MEET THE REQUIREMENTS OF ASTM D1785.

THE PAYMENT FOR THE PIPE SLEEVES SHALL BE INCLUDED IN THE SEVERAL PAY ITEMS.

FOR PAINTED STRUCTURAL STEEL (EXCLUDING AASHTO M270 GRADE 345W), SOLE PLATES, ANCHOR BOLTS NUTS AND WASHERS SHALL BE GALVANIZED IN ACCORDANCE WITH THE STANDARD SPECIFICATIONS.

FOR AASHTO M270 GRADE 345W STRUCTURAL STEEL, SOLE PLATE SHALL BE AASHTO M270 GRADE 345W AND SHALL NOT BE GALVANIZED, ANCHOR BOLTS AND NUTS SHALL BE GALVANIZED IN ACCORDANCE WITH THE STANDARD SPECIFICATIONS.

ANCHOR BOLTS SHALL MEET THE REQUIREMENTS OF ASTM A449. NUTS SHALL MEET THE REQUIREMENTS OF AASHTO M291M-12 OR AASHTO M292M-2H. WASHERS SHALL MEET THE REQUIREMENTS OF AASHTO M293M. SHOP DRAWINGS ARE NOT REQUIRED FOR ANCHOR BOLTS, NUTS AND WASHERS. SHOP INSPECTION IS REQUIRED.

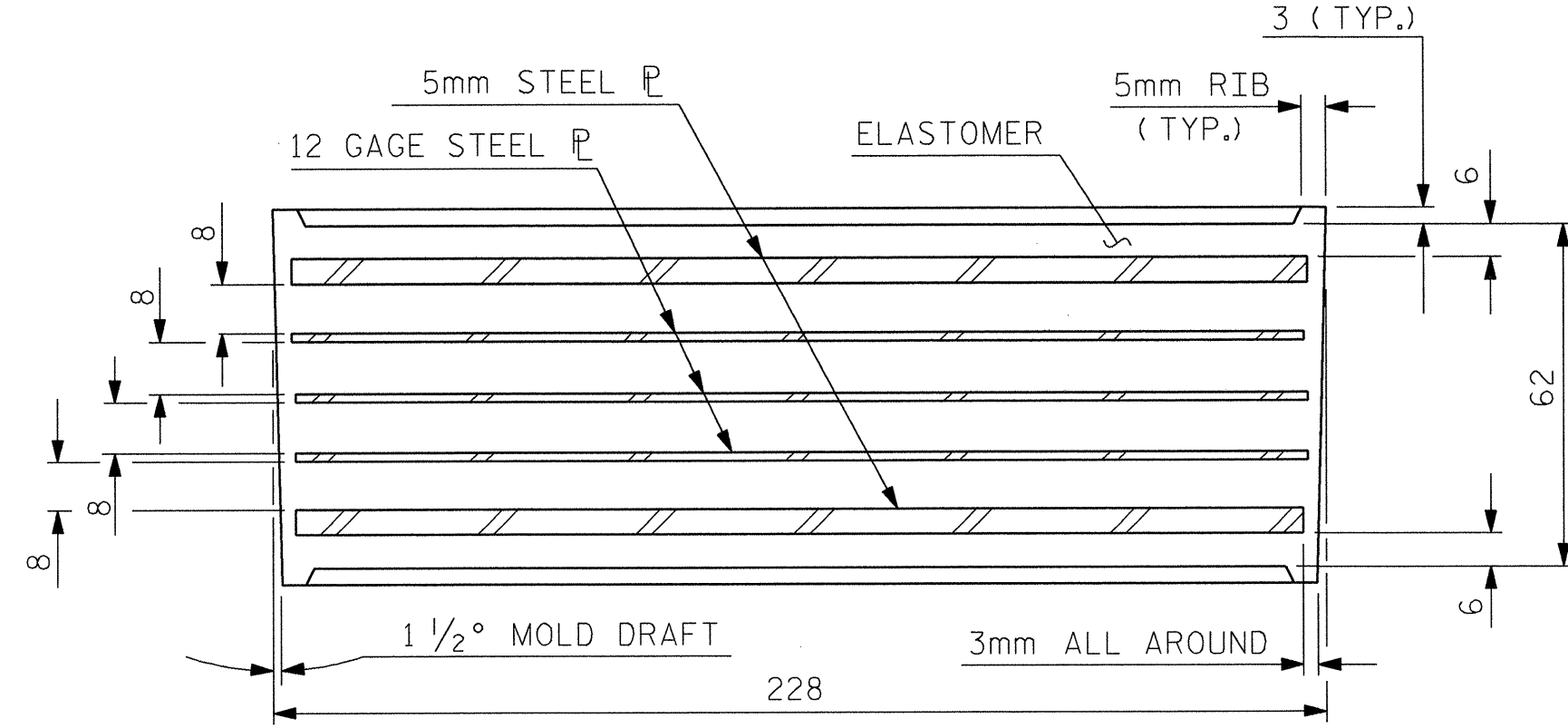
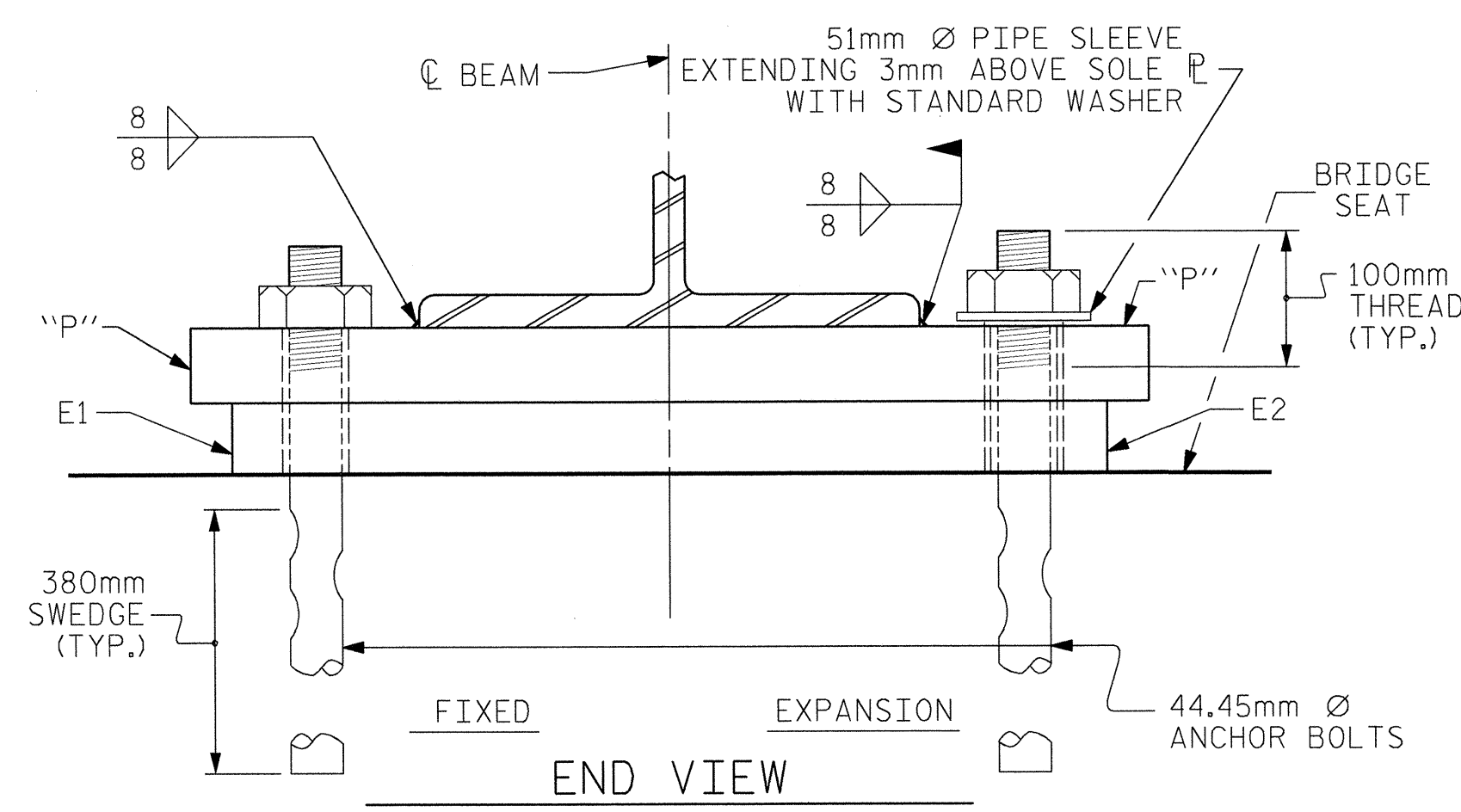
WHEN FIELD WELDING THE SOLE PLATE TO THE GIRDER FLANGE, USE TEMPERATURE INDICATING WAX PENS, OR OTHER SUITABLE MEANS, TO ENSURE THAT THE TEMPERATURE OF THE SOLE PLATE DOES NOT EXCEED 149°C. TEMPERATURES ABOVE THIS MAY DAMAGE THE ELASTOMER.

ALL SURFACES OF BEARING PLATES SHALL BE SMOOTH AND STRAIGHT.

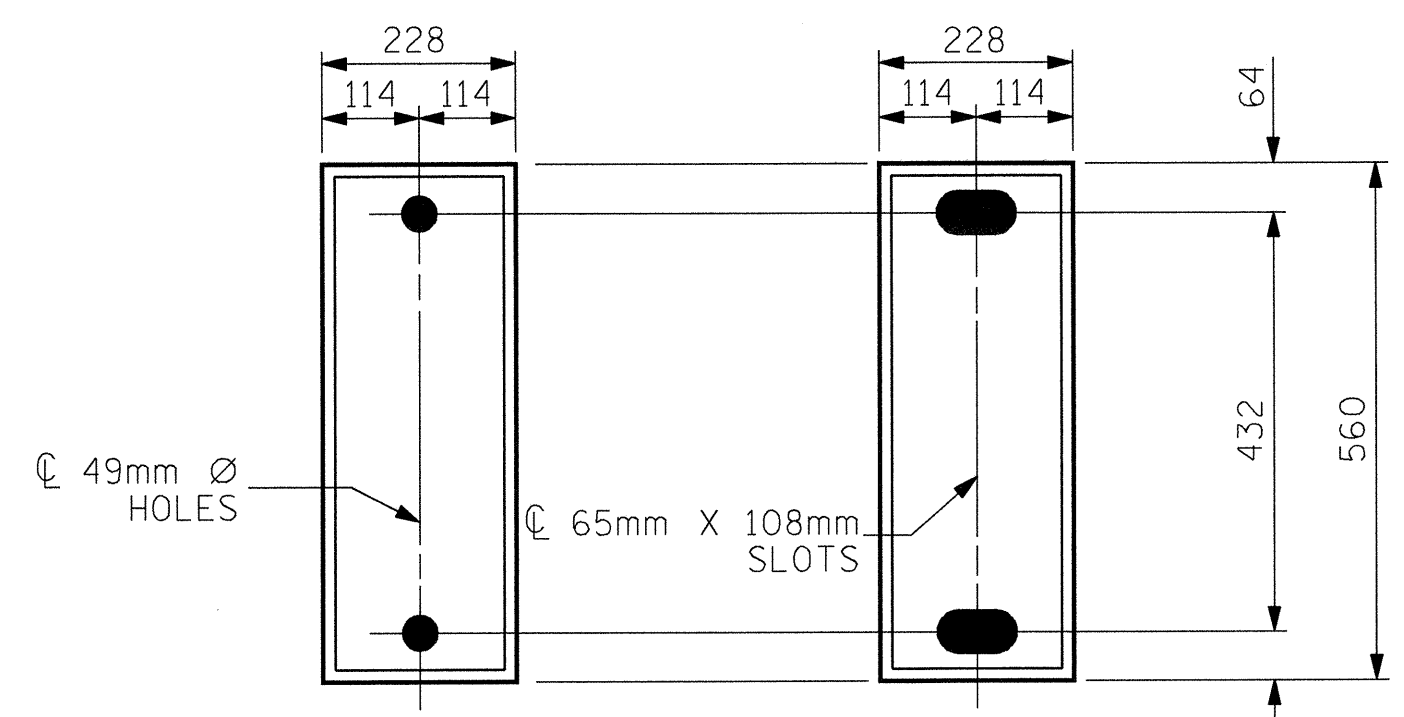
UP-STATION →

SOLE PLATE ("P")

**SOLE PLATE PLACEMENT DETAIL**

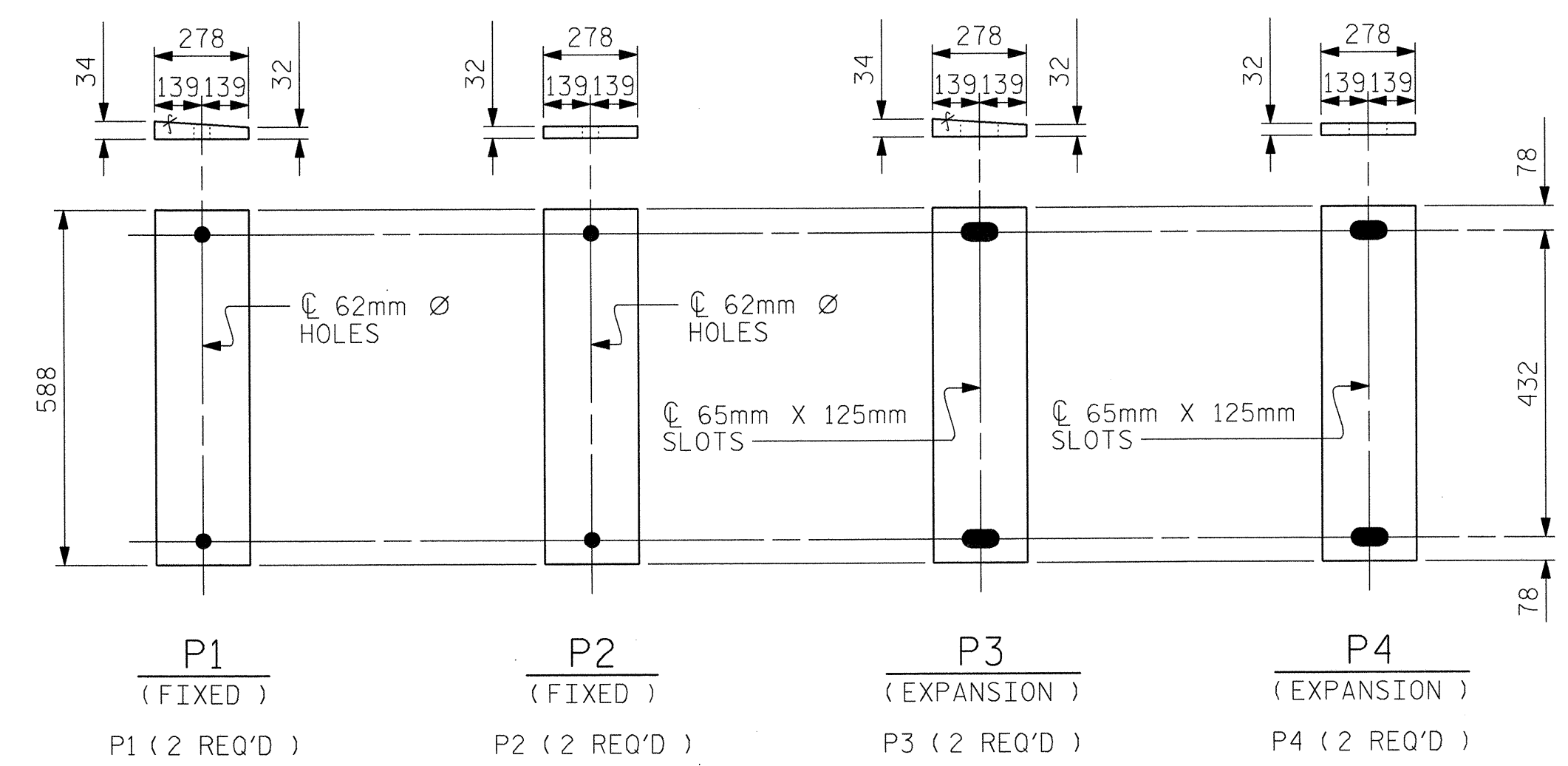


TYPICAL SECTION OF ELASTOMERIC BEARINGS

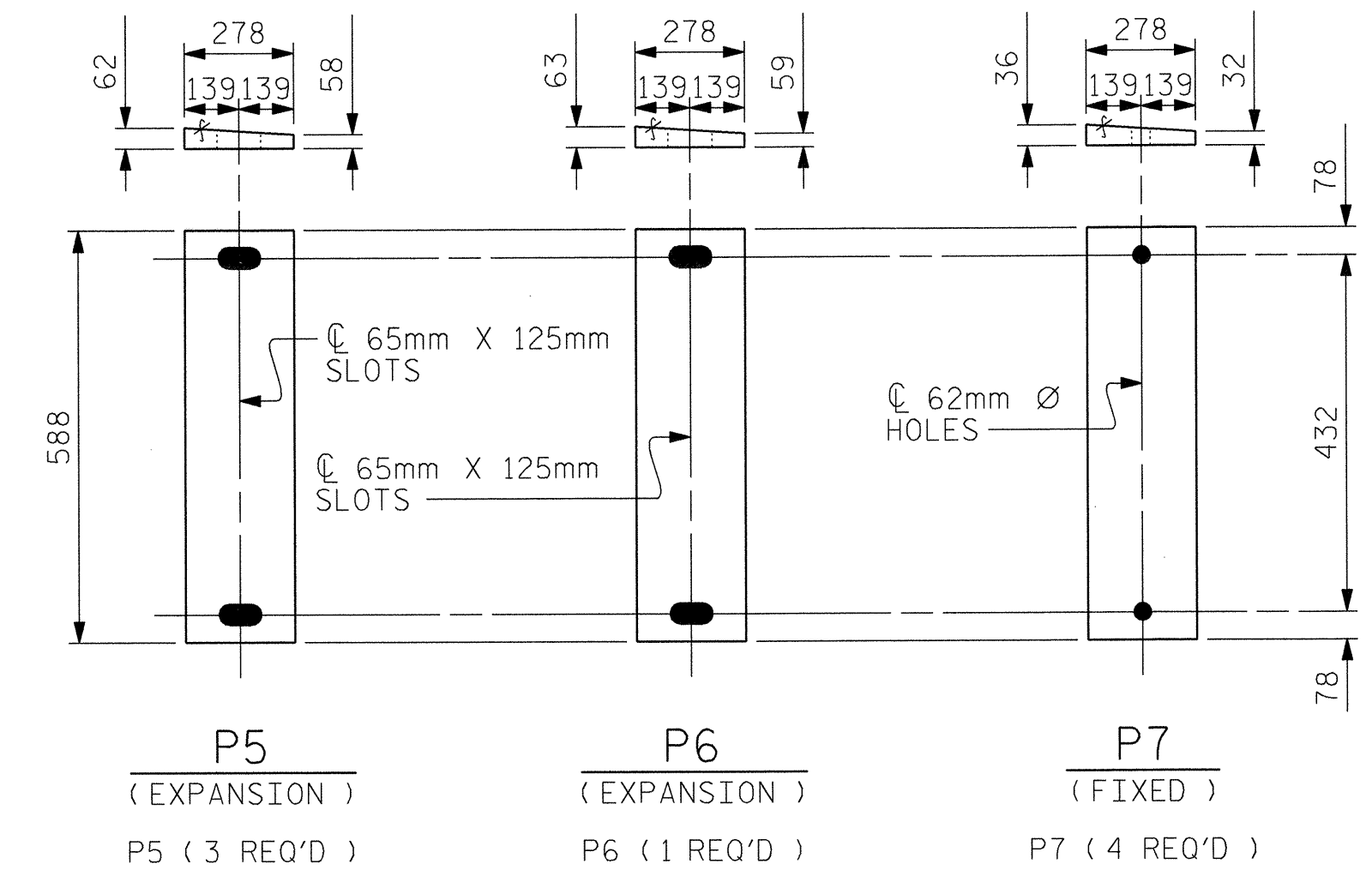


E1 (8 REQ'D) E2 (8 REQ'D)  
 PLAN VIEW OF ELASTOMERIC BEARING

**TYPE II**



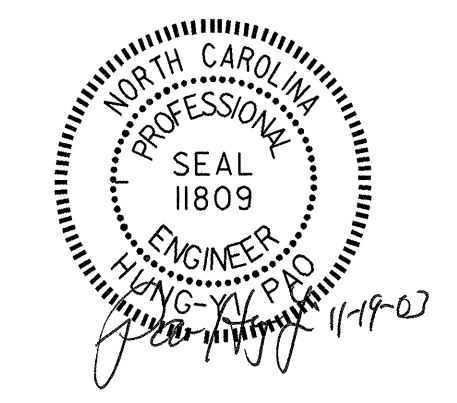
**SPAN A**



**SPAN C**

**SOLE PLATE DETAILS ("P")**

LOAD RATINGS	
	MAX. D.L. + L.L.
TYPE II	557 kN



PROJECT NO. R-2610A  
CHATHAM COUNTY  
 STATION: 27+85.488 -L-

STATE OF NORTH CAROLINA  
 DEPARTMENT OF TRANSPORTATION  
 RALEIGH  
**SUPERSTRUCTURE**  
**ELASTOMERIC BEARING DETAILS**  
 (STEEL SUPERSTRUCTURE)  
 SPANS A & C  
 (LEFT LANE BRIDGE)

REVISIONS						SHEET NO.	
NO.	BY:	DATE:	NO.	BY:	DATE:	5-55	
1			3			TOTAL SHEETS	
2			4			82	

**Stantec**  
 Stantec Consulting Services Inc.  
 Suite 300, 801 Jones Franklin Road  
 Raleigh, NC 27606  
 Tel. 919.851.6866  
 Fax. 919.851.7024  
 www.stantec.com

ASSEMBLED BY : M. J. OSTRISHKO	DATE : 1-23-03
CHECKED BY : H. PAO	DATE : 6-20-03
DRAWN BY : JMB 11/87	REV. 7/17/98 RWW/LES
CHECKED BY : ARB 11/87	REV. 8/16/99 MAB/LES
	REV. 10/17/00 RWW/LES