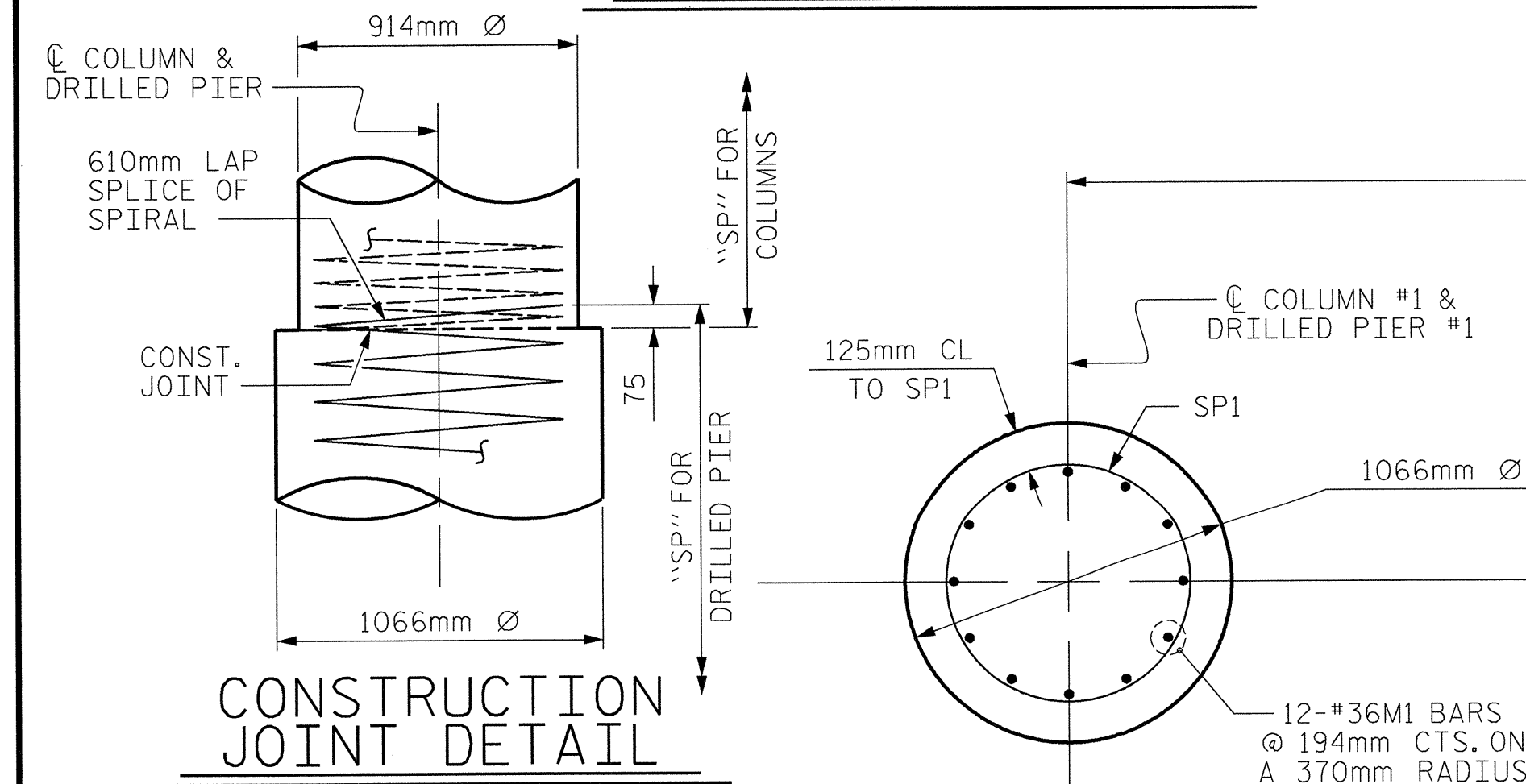
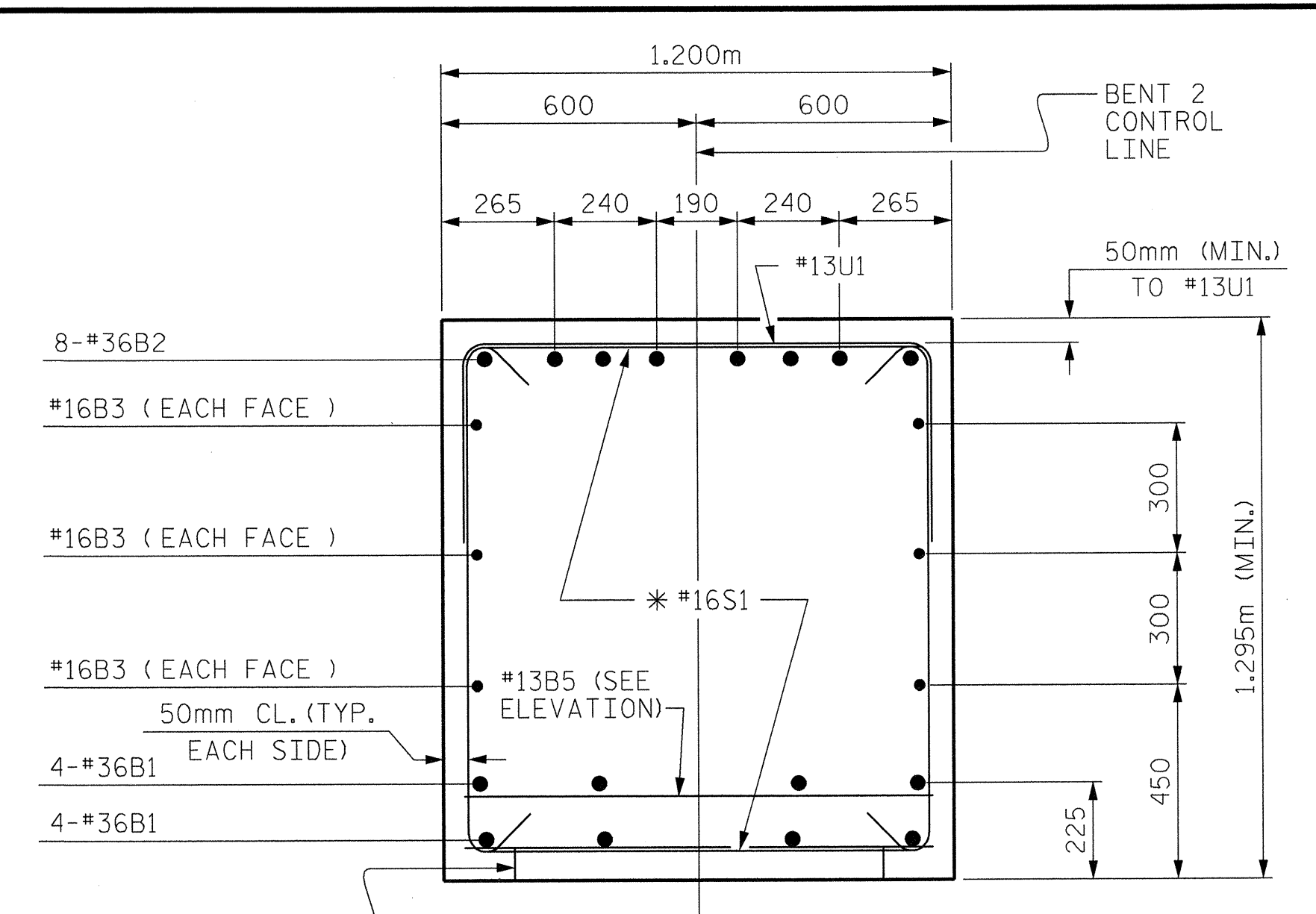


END ELEVATION



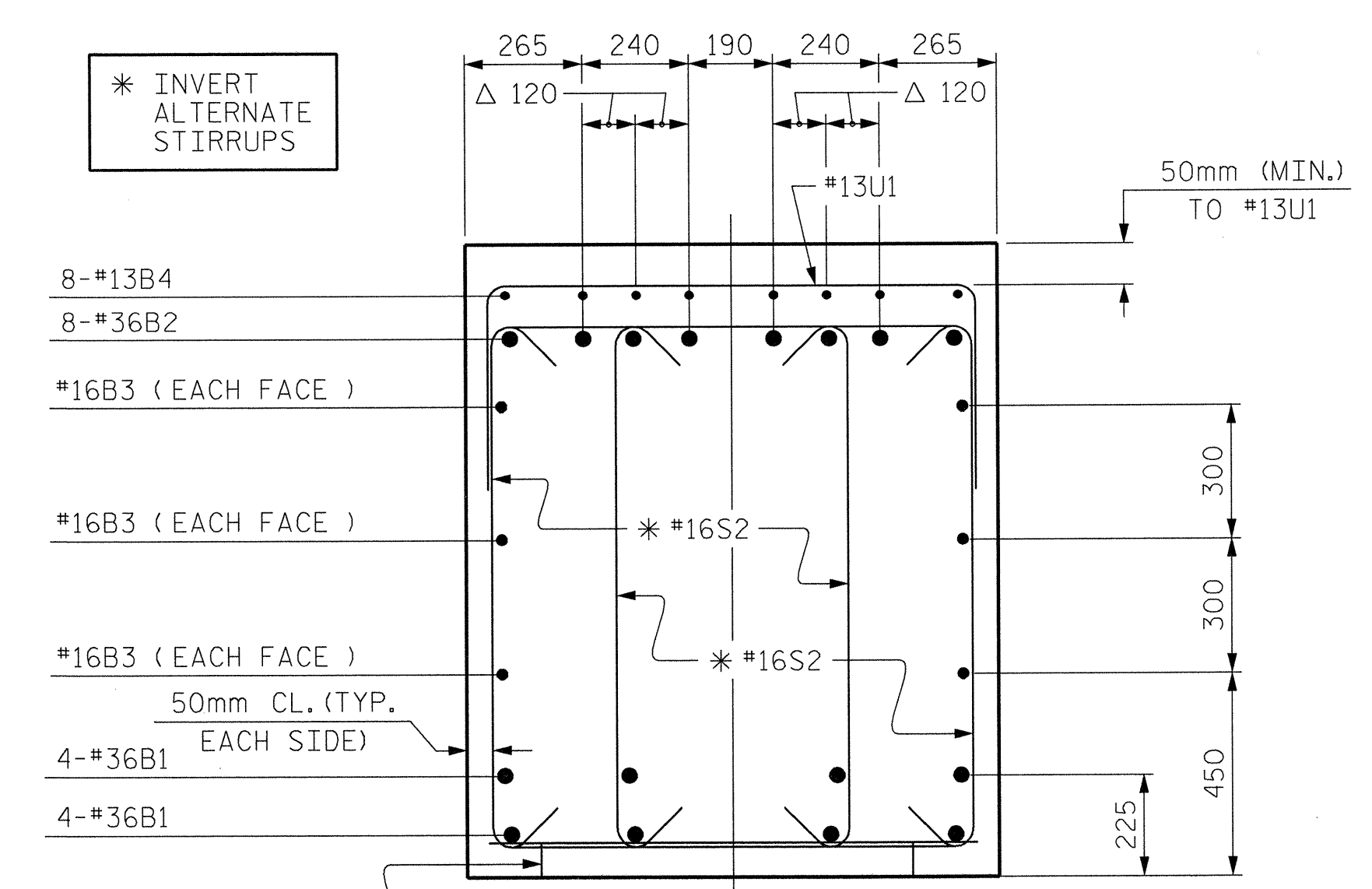
CONSTRUCTION JOINT DETAIL

PLAN OF DRILLED PIER
 REINFORCING STEEL AND DIMENSIONS ARE TYPICAL FOR ALL DRILLED PIERS.



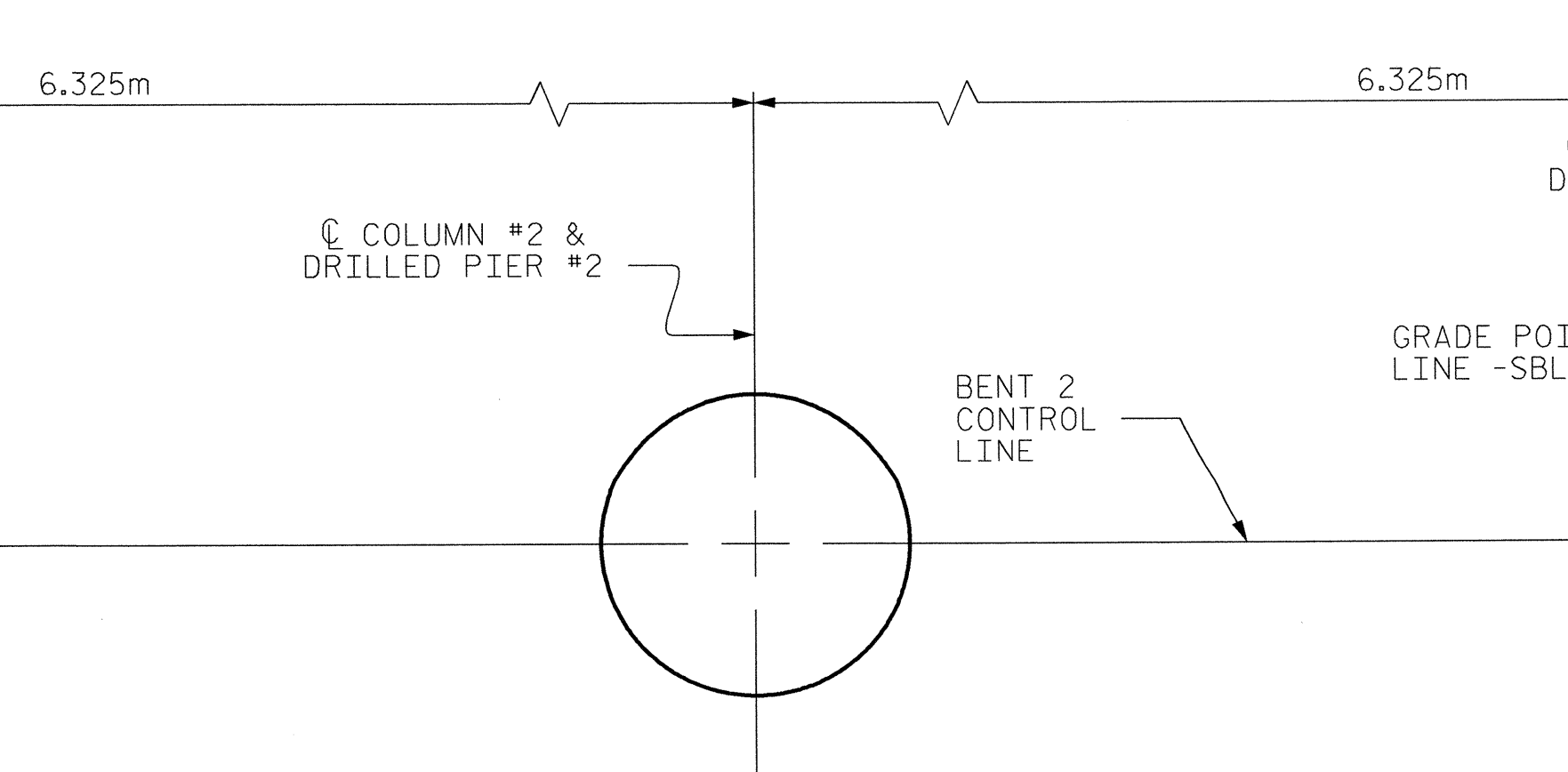
SECTION A-A

THE PLACEMENT OF SOME #32 "B" BARS TYPICAL OF SECTION A-A ARE CONTROLLED BY THE #16S2 BARS IN SECTION B-B.



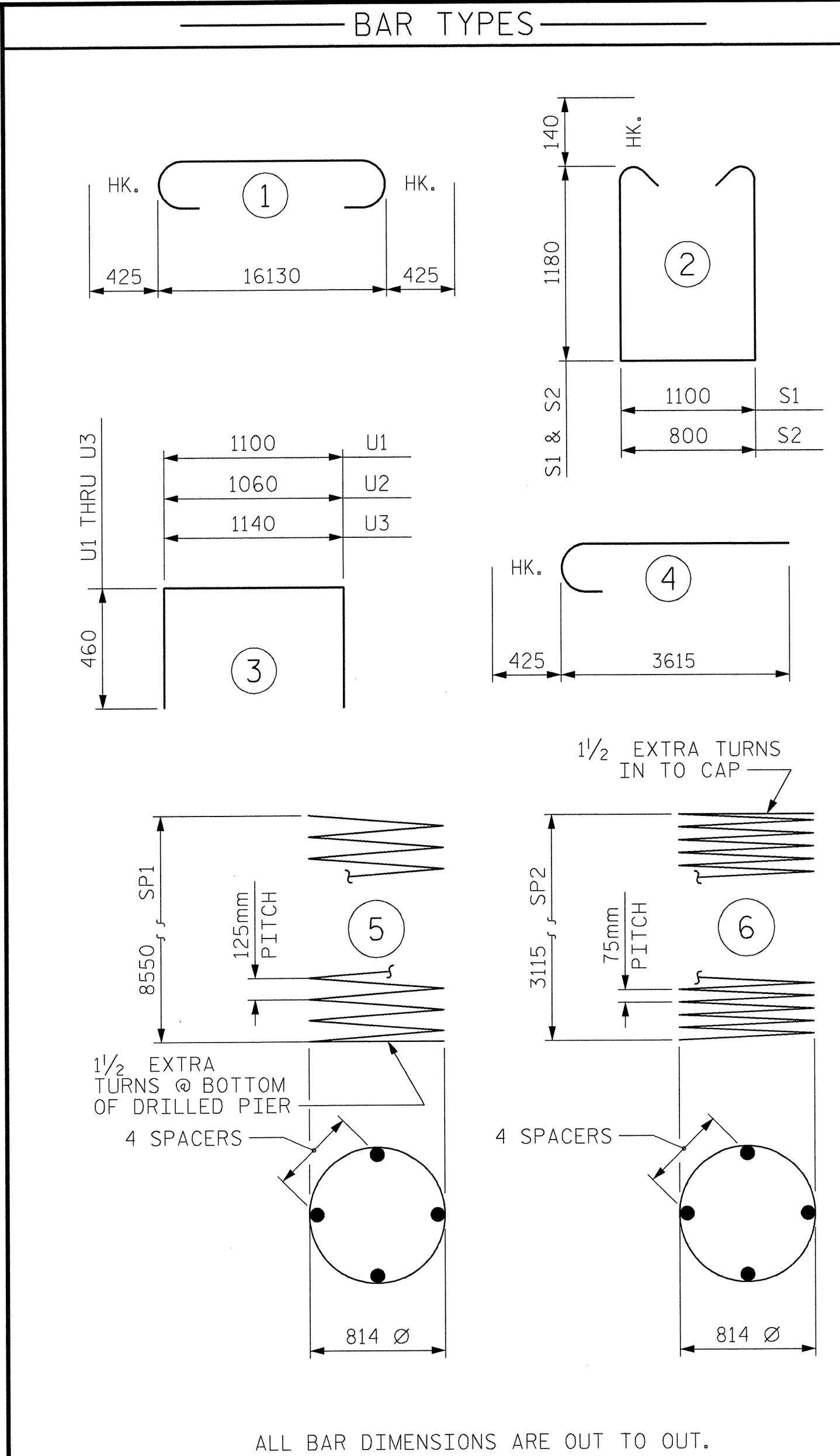
SECTION B-B

Δ ADDITIONAL DIMENSIONS FOR THE PLACEMENT OF #13B4 BARS.



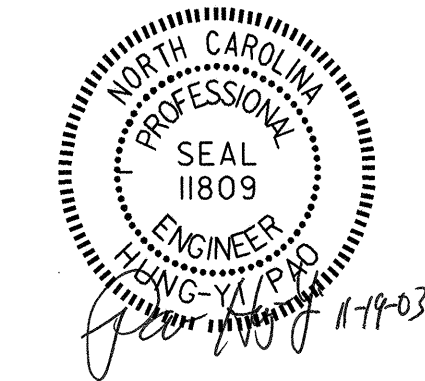
PLAN OF COLUMNS AND DRILLED PIERS

THE CONTRACTOR'S ATTENTION IS CALLED TO THE FACT THAT THE WORK POINT IS OFFSET FROM THE CENTERLINE COLUMN AND DRILLED PIER.



ALL BAR DIMENSIONS ARE OUT TO OUT.

BILL OF MATERIAL						
FOR BENT 2						
BAR NO.	NO.	SIZE	TYPE	LENGTH	WEIGHT	
B1	8	#32	STR	16160	828	
B2	8	#32	1	16980	870	
B3	6	#16	STR	16160	150	
B4	8	#13	STR	5980	48	
B5	14	#13	STR	1100	15	
M1	36	#36	STR	11980	3410	
S1	46	#16	2	3740	267	
S2	44	#16	2	3440	235	
U1	48	#13	3	2020	96	
U2	8	#13	3	1980	16	
U3	8	#13	3	2060	16	
V1	36	#32	4	4040	931	
REINFORCING STEEL					=	6,882 kg
SP1	3	**	5	175740	818	
SP2	3	***	6	110820	330	
SPIRAL COLUMN REINFORCING STEEL					=	1148 kg
CLASS A CONCRETE BREAKDOWN						
POUR #2 (COLUMNS)				m ³	6.0	
POUR #3 (CAP)				m ³	27.1	
TOTAL CLASS A CONCRETE				m ³	33.1	
DRILLED PIER CONCRETE BREAKDOWN						
POUR #1 (DRILLED PIERS)				m ³	23.3	
1066mm Ø DRILLED PIERS NOT IN SOIL METERS					12.4	
1066mm Ø DRILLED PIERS IN SOIL METERS					13.7	
SPT TESTING					2 EACH	
SID INSPECTION					1 EACH	
CSL TUBES					114.6 METERS	



* THE SP1 SPIRAL REINFORCING STEEL SHALL BE W31 OR D-31 COLD DRAWN WIRE OR #16 PLAIN OR DEFORMED BAR.
 ** THE SP2 SPIRAL REINFORCING STEEL SHALL BE W20 OR D-20 COLD DRAWN WIRE OR #13 PLAIN OR DEFORMED BAR.

PROJECT NO. R-2610A
 CHATHAM COUNTY
 STATION: 27+85.488 -L-

SHEET 2 OF 2
 STATE OF NORTH CAROLINA
 DEPARTMENT OF TRANSPORTATION
 RALEIGH
 SUBSTRUCTURE
 BENT 2
 (LEFT LANE BRIDGE)

REVISIONS						SHEET NO.
NO.	BY:	DATE:	NO.	BY:	DATE:	5-72
1			3			TOTAL SHEETS
2			4			02

Stantec Consulting Services Inc.
 Suite 300, 801 Jones Franklin Road
 Raleigh, NC 27606
 Tel. 919.851.6866
 Fax. 919.851.7024
 www.stantec.com

DRAWN BY : M. J. OSTRISHKO DATE : 3-18-03
 CHECKED BY : H. PAO DATE : 7-28-03