

METRIC

PROJECT REFERENCE NO. R-2610 A
SHEET NO. EC-3/CONST.4

R/W SHEET NO.

ROADWAY DESIGN ENGINEER
HYDRAULICS ENGINEER

CONST. REV. R/W REV. 03-19-02

SEE SHEET 28 FOR -L- PROFILE
SEE SHEET 2-CC FOR -L- & -YI- TRAFFIC DIAGRAM AND INTERSECTION DETAILS
SEE SHEETS 2-H & 2-I FOR DITCH DETAILS
SEE SHEET 44 FOR DITCH PROFILES

CLEARING AND GRUBBING EROSION CONTROL FOR CONSTRUCTION SHEET 4

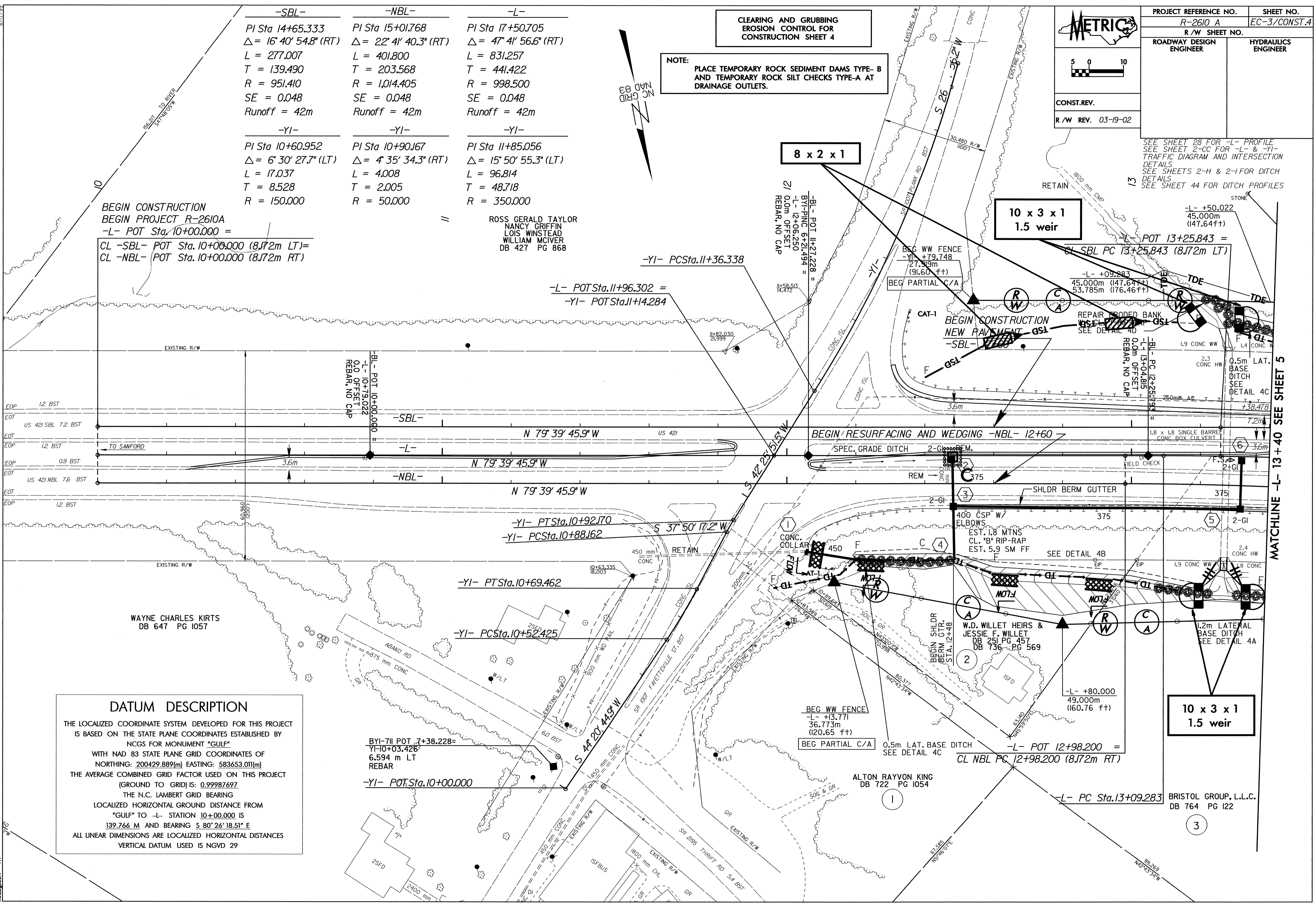
NOTE:
PLACE TEMPORARY ROCK SEDIMENT DAMS TYPE-B AND TEMPORARY ROCK SILT CHECKS TYPE-A AT DRAINAGE OUTLETS.

-SBL-	-NBL-	-L-
PI Sta 14+65.333	PI Sta 15+01.768	PI Sta 17+50.705
$\Delta = 16^\circ 40' 54.8" (RT)$	$\Delta = 22^\circ 41' 40.3" (RT)$	$\Delta = 47^\circ 41' 56.6" (RT)$
L = 277.007	L = 401.800	L = 831.257
T = 139.490	T = 203.568	T = 441.422
R = 951.410	R = 1,014.405	R = 998.500
SE = 0.048	SE = 0.048	SE = 0.048
Runoff = 42m	Runoff = 42m	Runoff = 42m

-YI-	-YI-	-YI-
PI Sta 10+60.952	PI Sta 10+90.167	PI Sta 11+85.056
$\Delta = 6^\circ 30' 27.7" (LT)$	$\Delta = 4^\circ 35' 34.3" (RT)$	$\Delta = 15^\circ 50' 55.3" (LT)$
L = 17.037	L = 4.008	L = 96.814
T = 8.528	T = 2.005	T = 48.718
R = 150.000	R = 50.000	R = 350.000

BEGIN CONSTRUCTION
BEGIN PROJECT R-2610A
-L- POT Sta. 10+00.000 =
CL -SBL- POT Sta. 10+00.000 (8.172m LT) =
CL -NBL- POT Sta. 10+00.000 (8.172m RT)

ROSS GERALD TAYLOR
NANCY GRIFFIN
LOIS WINSTEAD
WILLIAM MCIVER
DB 427 PG 868



DATUM DESCRIPTION

THE LOCALIZED COORDINATE SYSTEM DEVELOPED FOR THIS PROJECT IS BASED ON THE STATE PLANE COORDINATES ESTABLISHED BY NCGS FOR MONUMENT "GULF" WITH NAD 83 STATE PLANE GRID COORDINATES OF NORTHING: 200429.889(m) EASTING: 583653.011(m) THE AVERAGE COMBINED GRID FACTOR USED ON THIS PROJECT (GROUND TO GRID) IS: 0.99987697 THE N.C. LAMBERT GRID BEARING LOCALIZED HORIZONTAL GROUND DISTANCE FROM "GULF" TO -L- STATION 10+00.000 IS 139.766 M AND BEARING S 80° 26' 18.51" E ALL LINEAR DIMENSIONS ARE LOCALIZED HORIZONTAL DISTANCES VERTICAL DATUM USED IS NGVD 29

**10 x 3 x 1
1.5 weir**

**10 x 3 x 1
1.5 weir**

MATCHLINE -L- 13 + 40 SEE SHEET 5

R:\NOV-2003_0957...
2610a.prc\1\2610a.prc\1\2610a04.pah