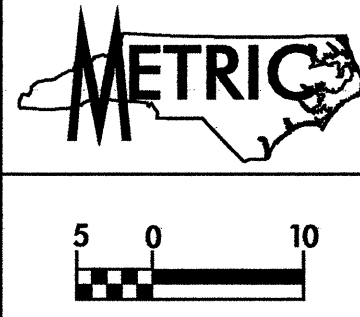


8/17/09
 R:\NOV-2003\1056\2610a\pro\1-2610a25.psh
 10/10/2003 10:56 AM
 2610a25.psh
 10/10/2003 10:56 AM
 2610a25.psh

**CLEARING AND GRUBBING
EROSION CONTROL FOR
CONSTRUCTION SHEET 25**



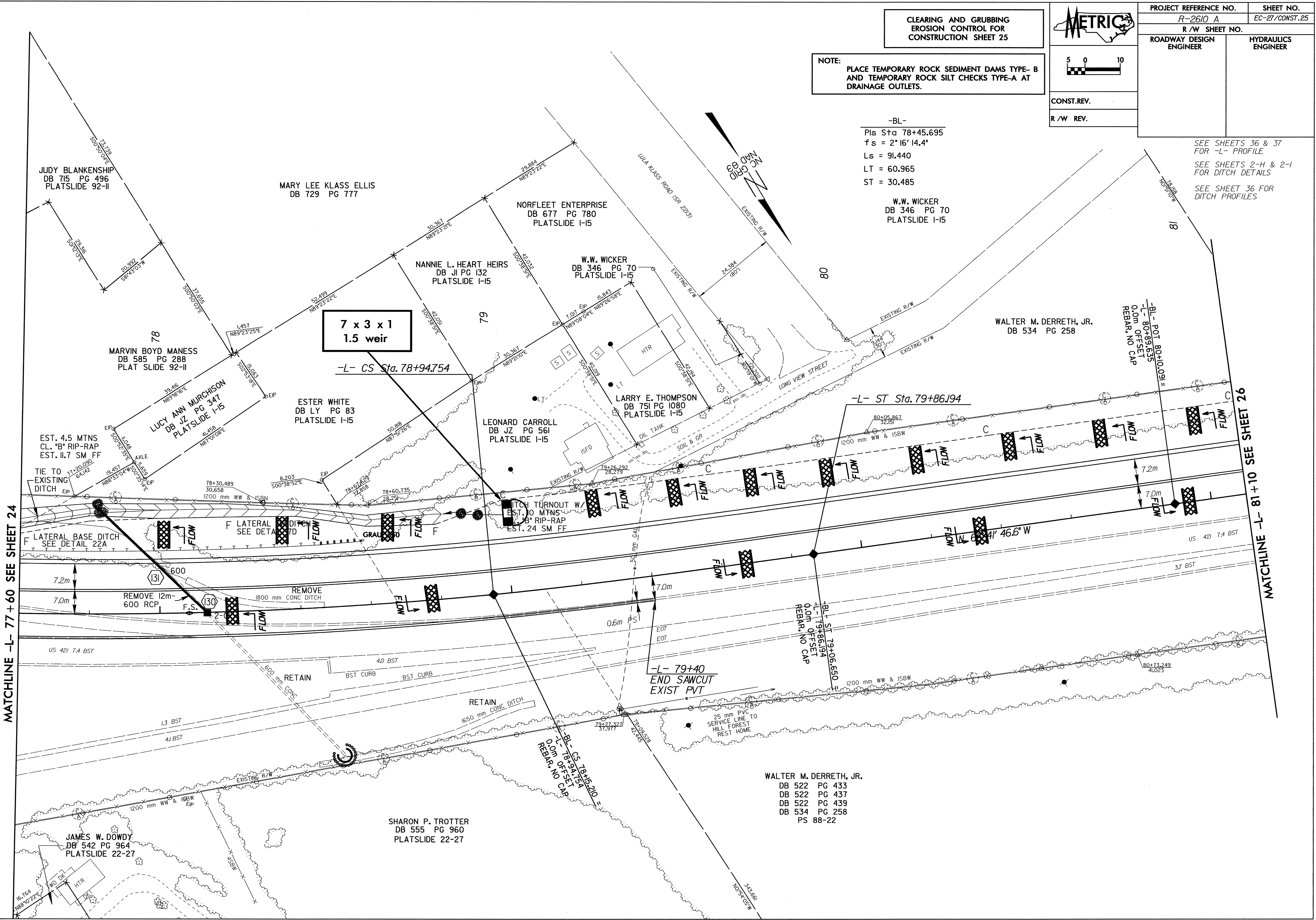
PROJECT REFERENCE NO. R-2610 A	SHEET NO. EC-27/CONST. 25
R/W SHEET NO.	
ROADWAY DESIGN ENGINEER	HYDRAULICS ENGINEER
CONST. REV.	
R/W REV.	

NOTE:
PLACE TEMPORARY ROCK SEDIMENT DAMS TYPE-B
AND TEMPORARY ROCK SILT CHECKS TYPE-A AT
DRAINAGE OUTLETS.

-BL-
Pls Sta 78+45.695
fs = 2' 16" 14.4"
Ls = 91.440
LT = 60.965
ST = 30.485

W.W. WICKER
DB 346 PG 70
PLATSLIDE I-15

SEE SHEETS 36 & 37
FOR -L- PROFILE
SEE SHEETS 2-H & 2-I
FOR DITCH DETAILS
SEE SHEET 36 FOR
DITCH PROFILES



MATCHLINE -L- 77 + 60 SEE SHEET 24

MATCHLINE -L- 81 + 10 SEE SHEET 26

JUDY BLANKENSHIP
DB 715 PG 496
PLATSLIDE 92-II

MARY LEE KLOSS ELLIS
DB 729 PG 777

NORFLEET ENTERPRISE
DB 677 PG 780
PLATSLIDE I-15

NANNIE L. HEART HEIRS
DB JI PG 132
PLATSLIDE I-15

W.W. WICKER
DB 346 PG 70
PLATSLIDE I-15

MARVIN BOYD MANESS
DB 585 PG 288
PLAT SLIDE 92-II

LUCY ANN MURCHISON
DB JZ PG 347
PLATSLIDE I-15

ESTER WHITE
DB LY PG 83
PLATSLIDE I-15

LEONARD CARROLL
DB JZ PG 561
PLATSLIDE I-15

LARRY E. THOMPSON
DB 751 PG 1080
PLATSLIDE I-15

WALTER M. DERRETH, JR.
DB 534 PG 258

EST. 4.5 MTNS
CL. "B" RIP-RAP
EST. 11.7 SM FF

LATERAL BASE DITCH
SEE DETAIL 22A

REMOVE 12m
600 RCP

REMOVE
1800 mm CONC DITCH

-L- 79+40
END SAWCUT
EXIST PVT

JAMES W. DOWDY
DB 542 PG 964
PLATSLIDE 22-27

SHARON P. TROTTER
DB 555 PG 960
PLATSLIDE 22-27

WALTER M. DERRETH, JR.
DB 522 PG 433
DB 522 PG 437
DB 522 PG 439
DB 534 PG 258
PS 88-22