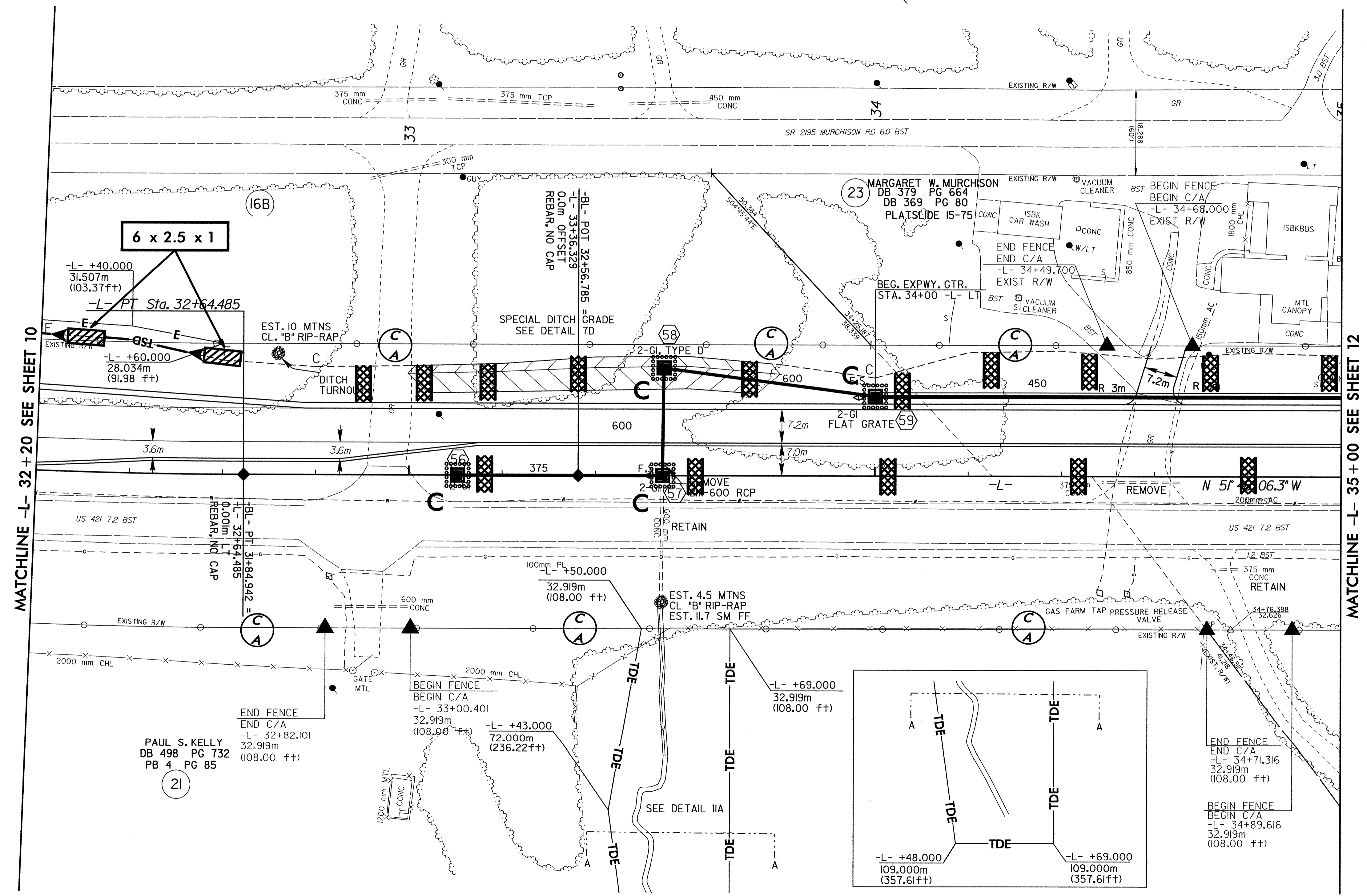


CONST. REV.
R /W REV. 03-19-02

PROJECT REFERENCE NO. R-2610 A	SHEET NO. EC-37/CONST.II
R /W SHEET NO.	
ROADWAY DESIGN ENGINEER	HYDRAULICS ENGINEER

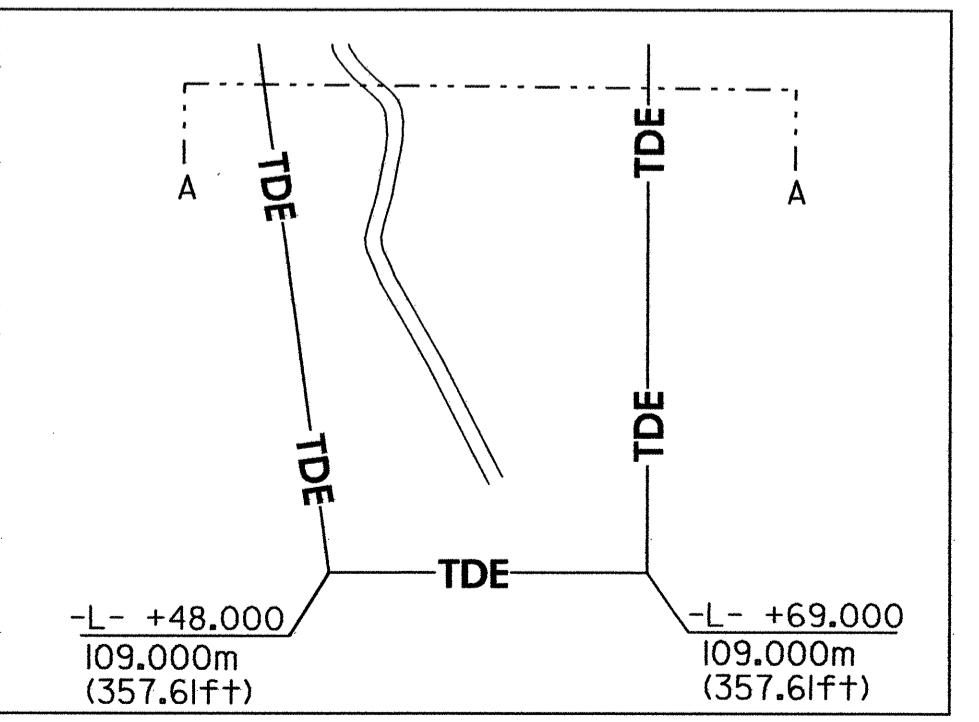
-L-
 PI Sta 30+60.891
 $\Delta = 19^\circ 48' 16.9" (LT)$
 $L = 411.332$
 $T = 207.739$
 $R = 1,190.000$
 $SE = 0.041$
 Runoff = 36m

SEE SHEET 30 & 31 FOR -L- PROFILE
 SEE SHEETS 2-H & 2-I FOR DITCH DETAILS
 SEE SHEET 48 FOR DITCH PROFILES



MATCHLINE -L- 32 + 20 SEE SHEET 10

MATCHLINE -L- 35 + 00 SEE SHEET 12



8/17/2010
 H:\NOV-2003\1342
 ch\view\pur\al\2610a\proj\2610a\l1.psh
 mlugdash