

8/17/93

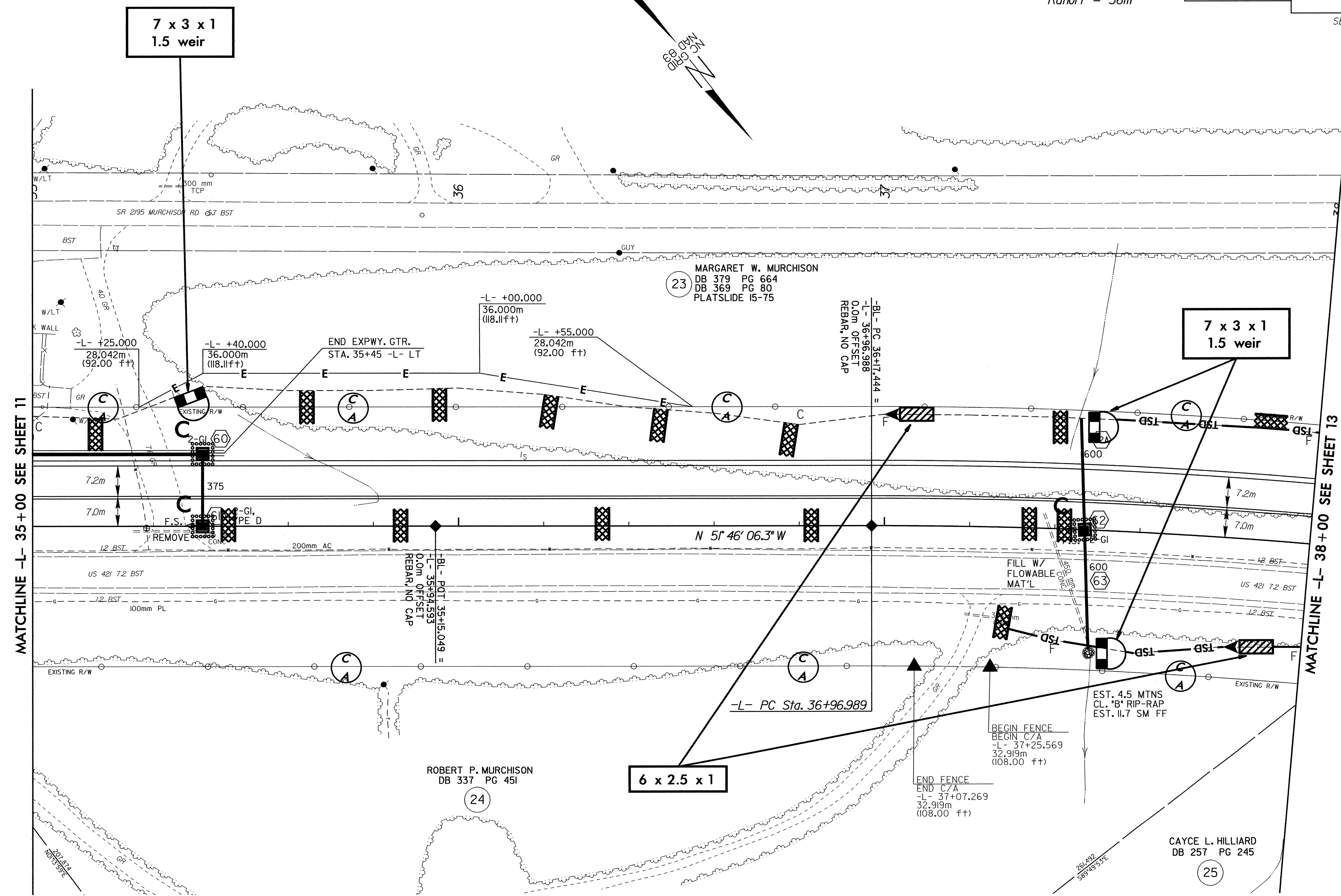
METRIC

CONST. REV.
R/W REV. 03-19-02

PROJECT REFERENCE NO. R-2610 A	SHEET NO. EC-38/CONST.12
ROADWAY DESIGN ENGINEER	HYDRAULICS ENGINEER

-L-
 PI Sta 40+75.263
 $\Delta = 35^{\circ} 16' 06.9''$ (RT)
 $L = 732.508$
 $T = 378.274$
 $R = 1,190.000$
 $SE = 0.041$
 Runoff = 36m

SEE SHEET 31 FOR -L- PROFILE



MATCHLINE -L- 35+00 SEE SHEET 11

MATCHLINE -L- 38+00 SEE SHEET 13

2:\01\3003\155-2610a\proj\1-2610a\ec12.dwg
8/17/93
MURCHISON