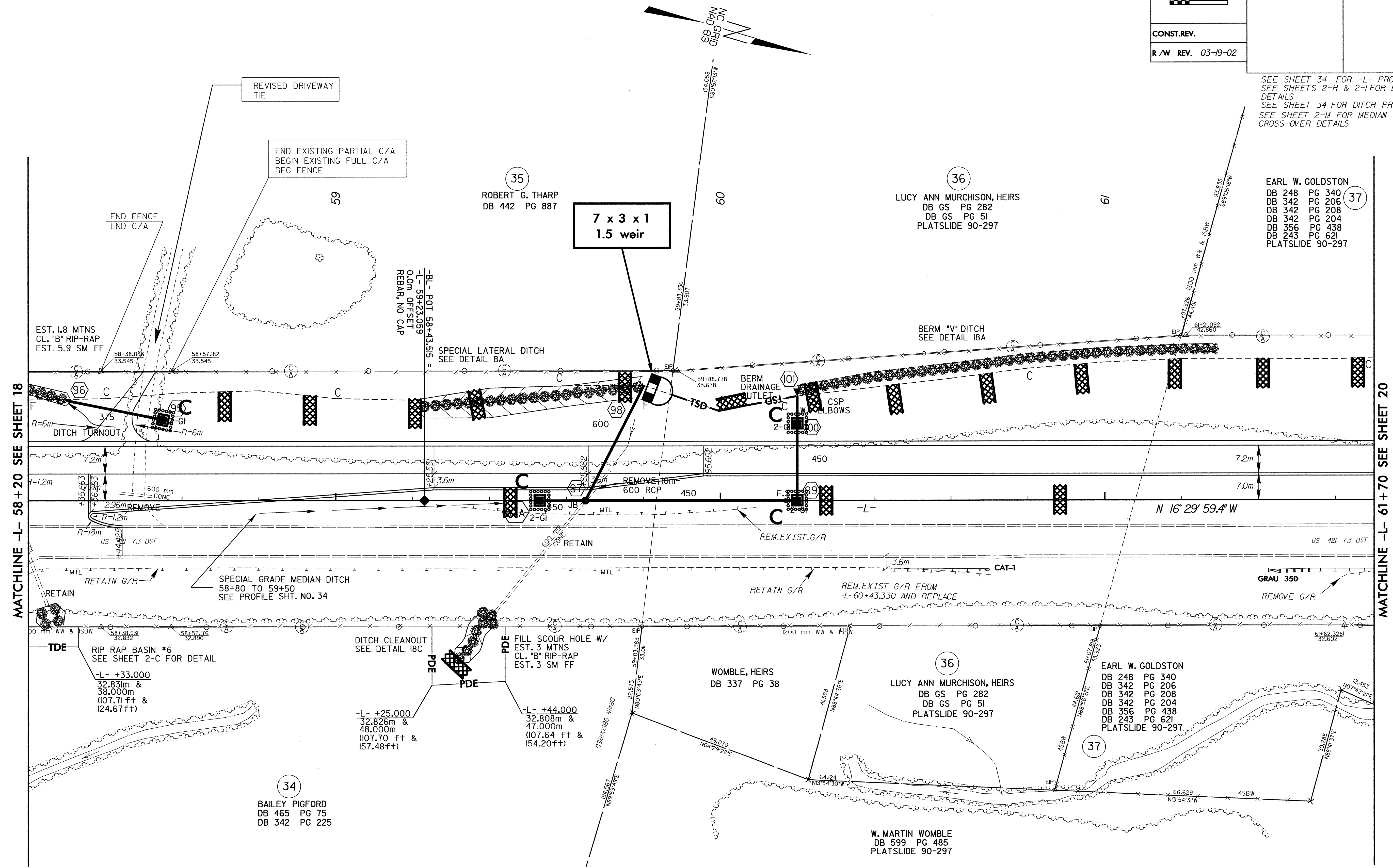


PROJECT REFERENCE NO. R-2610 A		SHEET NO. EC-45/CONST.19
R/W SHEET NO.		
ROADWAY DESIGN ENGINEER	HYDRAULICS ENGINEER	
CONST. REV.		
R/W REV. 03-19-02		

SEE SHEET 34 FOR -L- PROFILE
SEE SHEETS 2-H & 2-I FOR DITCH DETAILS
SEE SHEET 34 FOR DITCH PROFILES
SEE SHEET 2-M FOR MEDIAN CROSS-OVER DETAILS

EARL W. GOLDSTON
DB 248 PG 340
DB 342 PG 206
DB 342 PG 208
DB 342 PG 204
DB 356 PG 438
DB 243 PG 621
PLATSLIDE 90-297



MATCHLINE -L- 58+20 SEE SHEET 18

MATCHLINE -L- 61+70 SEE SHEET 20

15-NOV-2003 10:27
C:\Users\paul\Documents\2610a\proj\2610aas19.psh
ch\leung\leung