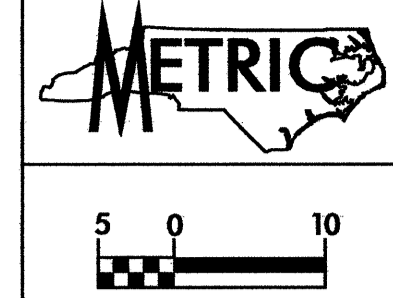


8/17/03
 11-NOV-2003 14:59
 C:\Users\jscarb\My Documents\2610a\proj\2610a\2610a24.pht

SEE SHT 2-L FOR FENCE
 REPLACEMENT LIMITS
 ALONG SR 1010

JOE A. TURNER
 DB 302 PG 64
 DB KN PG 158
 PLATSLIDE 3-1
 PLATSLIDE 9-81

ANNE G. ASKINS
 DB 665 PG 755
 PLATSLIDE 9-81

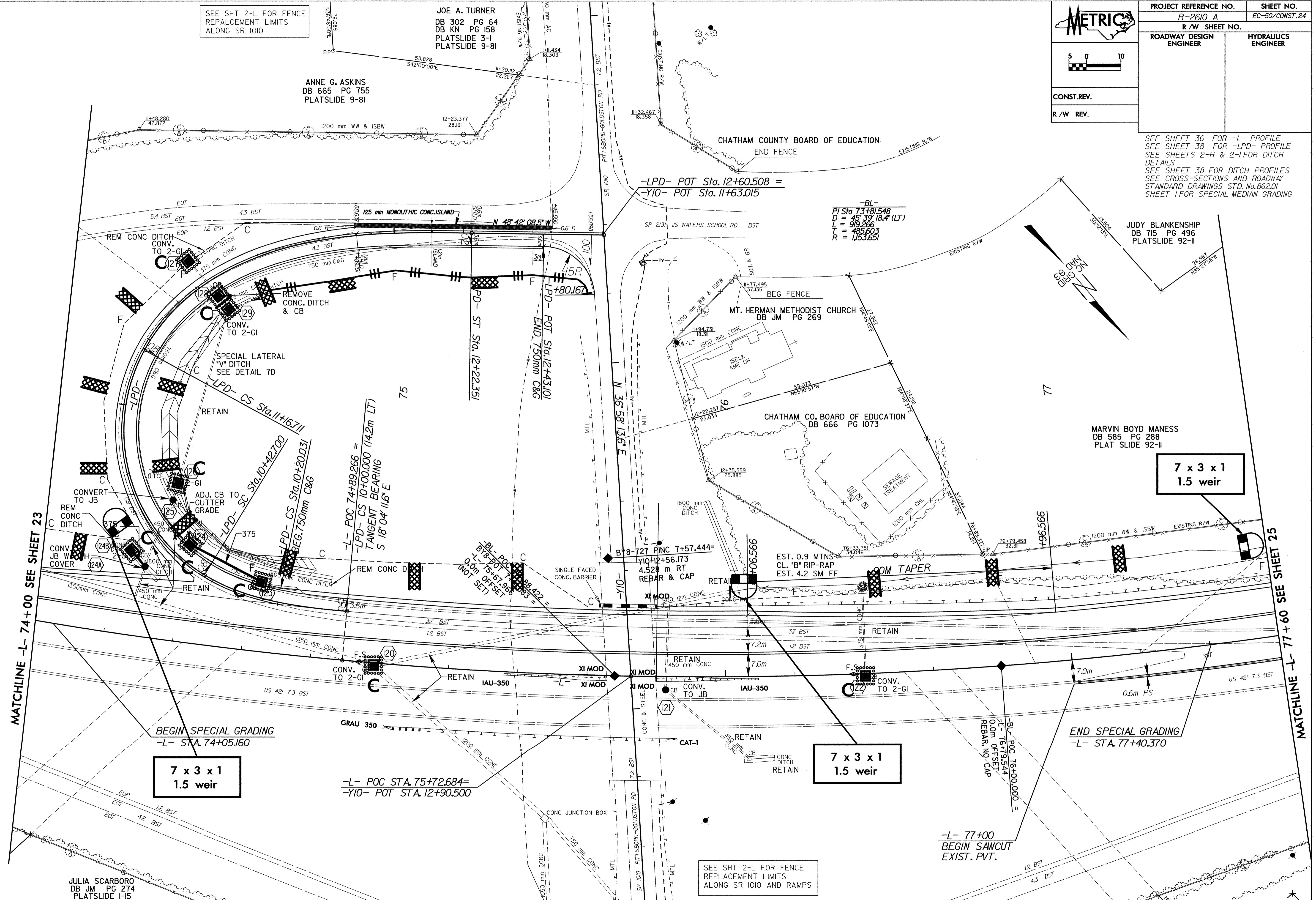


PROJECT REFERENCE NO. R-2610 A	SHEET NO. EC-50/CONST.24
R/W SHEET NO.	
ROADWAY DESIGN ENGINEER	HYDRAULICS ENGINEER
CONST.REV.	
R/W REV.	

SEE SHEET 36 FOR -L- PROFILE
 SEE SHEET 38 FOR -LPD- PROFILE
 SEE SHEETS 2-H & 2-I FOR DITCH
 DETAILS
 SEE SHEET 38 FOR DITCH PROFILES
 SEE CROSS-SECTIONS AND ROADWAY
 STANDARD DRAWINGS STD. No. 862.01
 SHEET 1 FOR SPECIAL MEDIAN GRADING

JUDY BLANKENSHIP
 DB 715 PG 496
 PLATSLIDE 92-II

MARVIN BOYD MANESS
 DB 585 PG 288
 PLAT SLIDE 92-II



MATCHLINE -L- 74+00 SEE SHEET 23

MATCHLINE -L- 77+60 SEE SHEET 25

7 x 3 x 1
 1.5 weir

7 x 3 x 1
 1.5 weir

END SPECIAL GRADING
 -L- STA. 77+40.370

BEGIN SPECIAL GRADING
 -L- STA. 74+05.160

-L- POC STA. 75+72.684=
 -Y10- POT STA. 12+90.500

SEE SHT 2-L FOR FENCE
 REPLACEMENT LIMITS
 ALONG SR 1010 AND RAMPS

-L- 77+00
 BEGIN SAWCUT
 EXIST. PVT.

JULIA SCARBORO
 DB JM PG 274
 PLATSLIDE 1-15