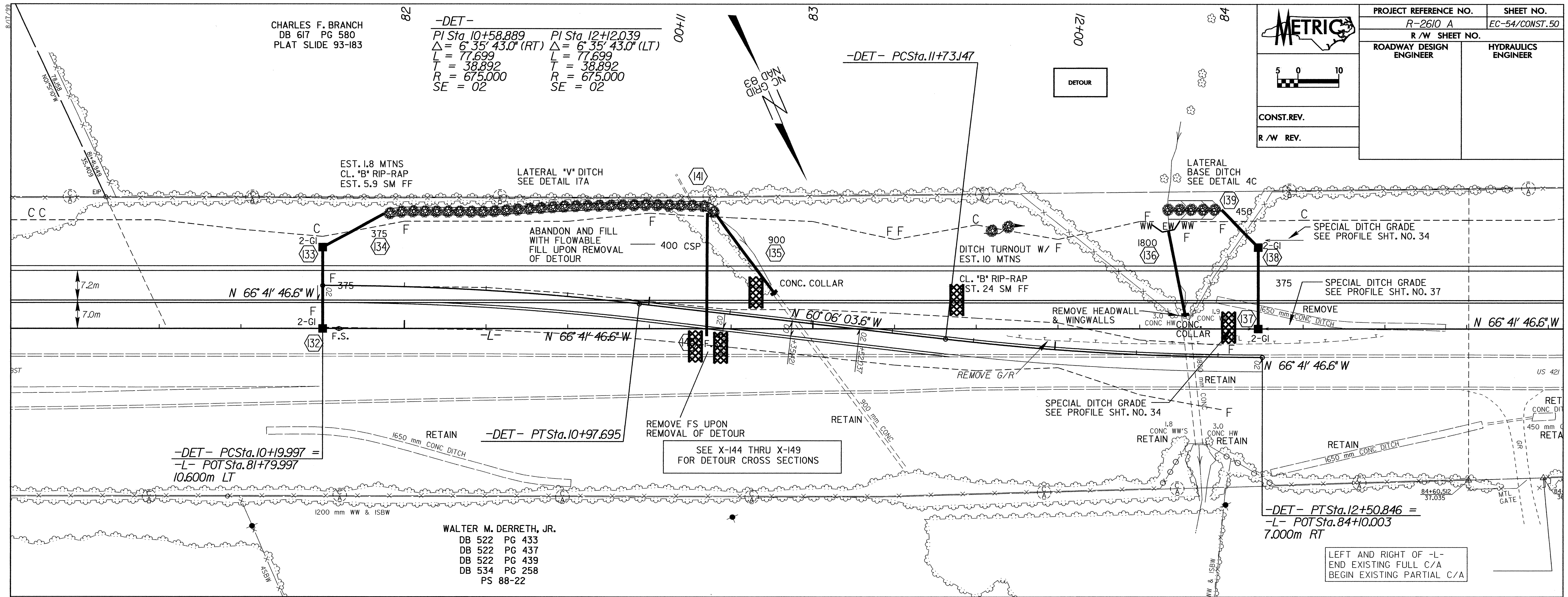


CHARLES F. BRANCH
DB 617 PG 580
PLAT SLIDE 93-183

-DET-
PI Sta. 10+58.889 PI Sta. 12+12.039
 $\Delta = 6^\circ 35' 43.0" (RT)$ $\Delta = 6^\circ 35' 43.0" (LT)$
L = 77.699 L = 77.699
T = 38.892 T = 38.892
R = 675.000 R = 675.000
SE = 02 SE = 02



PROJECT REFERENCE NO. R-2610 A	SHEET NO. EC-54/CONST.50
R/W SHEET NO.	
ROADWAY DESIGN ENGINEER	HYDRAULICS ENGINEER
CONST. REV.	
R/W REV.	



REVISIONS

-DET- PCSta. 10+19.997 =
-L- POT Sta. 81+79.997
10.600m LT

WALTER M. DERRETH, JR.
DB 522 PG 433
DB 522 PG 437
DB 522 PG 439
DB 534 PG 258
PS 88-22

-DET- PTSta. 12+50.846 =
-L- POT Sta. 84+10.003
7.000m RT

LEFT AND RIGHT OF -L-
END EXISTING FULL C/A
BEGIN EXISTING PARTIAL C/A