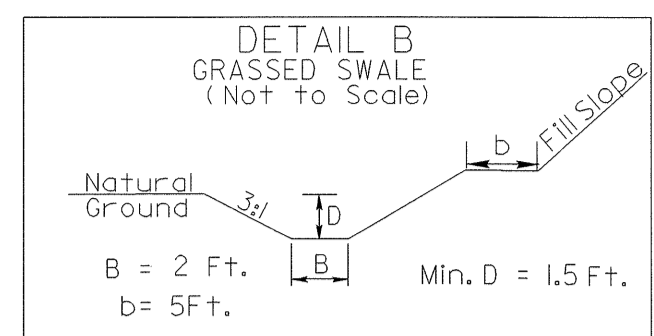
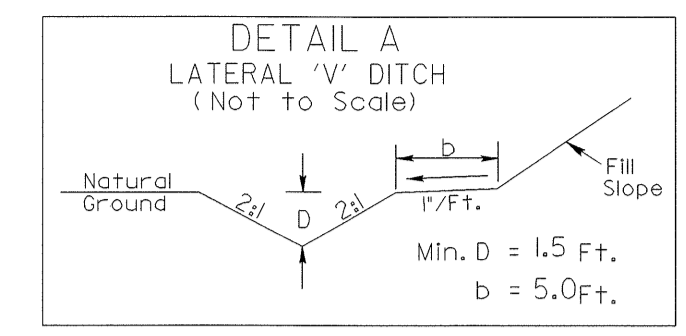


UTILITIES BY OTHERS

NOTE:
ALL PROPOSED UTILITY WORK
SHOWN ON THIS SHEET WILL
BE DONE BY OTHERS

-L-



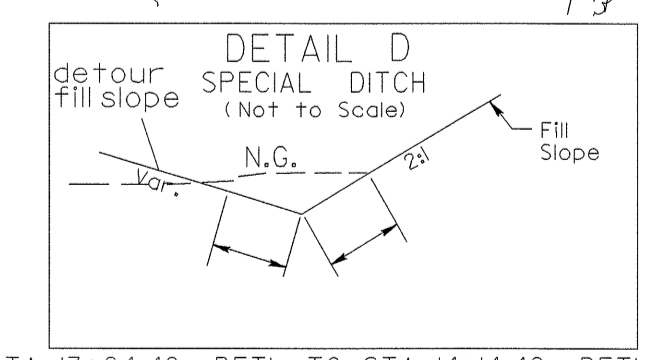
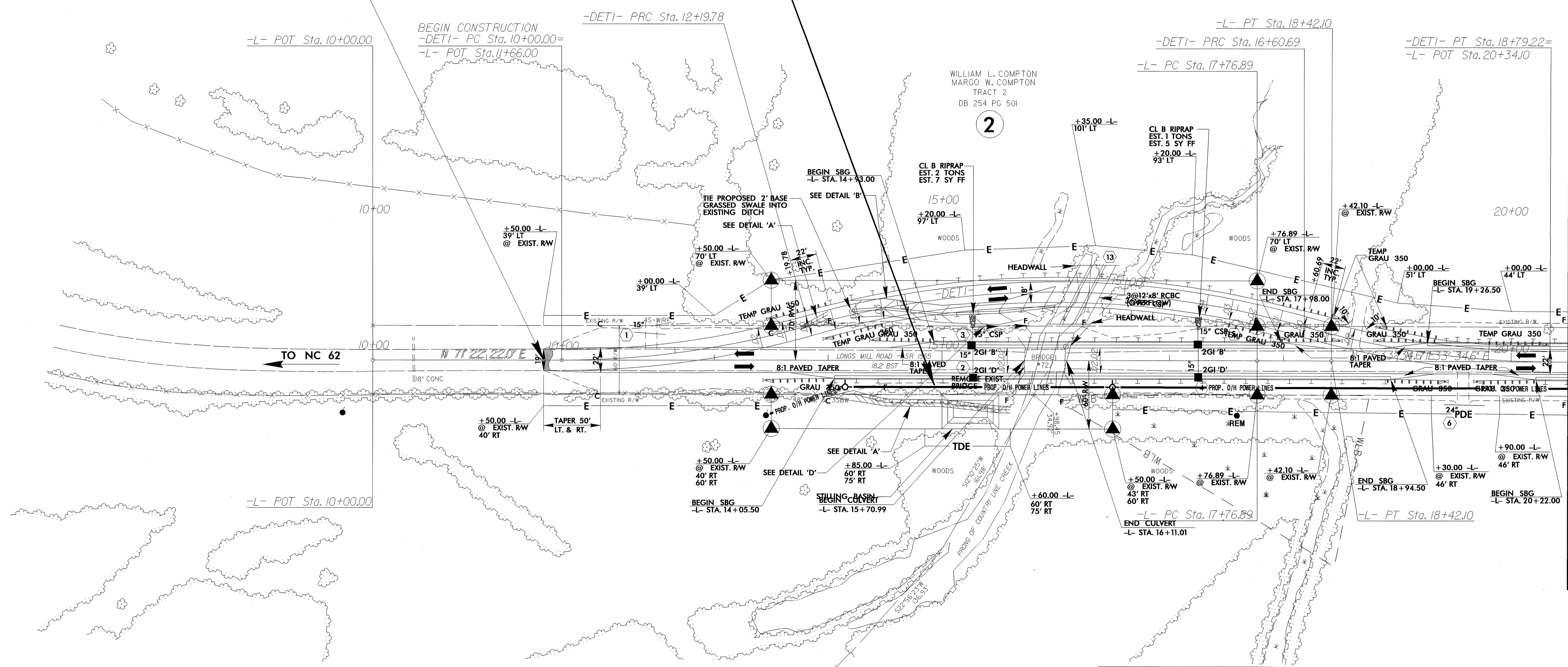
-L-
PI Sta 18+09.49
Δ = 0' 11" 12.6" (RT)
D = 0' 17" 11.3"
L = 65.22'
T = 32.61'
R = 20,000.00'
SE=NC

STA. 13+75 -L- TO STA. 14+00 -L- LT., DDE= 2CY STA. 14+20 -L- TO STA. 16+00 -L- LT., DDE= 19CY
STA. 14+25 -L- TO STA. 15+60 -L- RT., DDE= 18CY

SHOULDER BERM CUTTER
STA. 14+93.00 -L- TO STA. 17+98.00 -L- LT.
STA. 19+26.50 -L- TO STA. 20+50.00 -L- LT.
STA. 14+05.50 -L- TO STA. 18+94.50 -L- RT.
STA. 20+22.00 -L- TO STA. 20+50.00 -L- RT.
SEE SHEET 2 AND STD. DRAWINGS

NOTE:
PROP. POLES AND PROP. O/H POWER LINES TO BE
INSTALLED AFTER COMPLETION OF THIS PROJECT.

-L- STA. 11+50.00 BEGIN STATE PROJECT B-3629
-L- STA. 11+50.00 BEGIN F.A. PROJECT BRZ-1565(3)



STA. 13+64.48 -DETI- TO STA. 14+14.48 -DETI- RT.

DAVID W. SIMS
DB 239 PG 454

RONALD L. DANIEL
DB 197 PG 6

1

3

DESIGN EXCEPTION REQUIRED FOR SAG VERTICAL CURVES,
SUPERELEVATION, AND STOPPING SIGHT DISTANCE.

SEE SHEET 8 FOR -L- LINE PROFILE
SEE SHEETS C-1 THRU C-6 FOR CULVERT PLANS

MATCHLINE -L- STA. 20+50, SEE SHEET UO-3

8/17/99
08-JUN-2004 16:44
R:\Utilities\pdu\ut\Prj\B3629\04_U02.ut.psh.dgn
cloudrunner AT DESKTOP