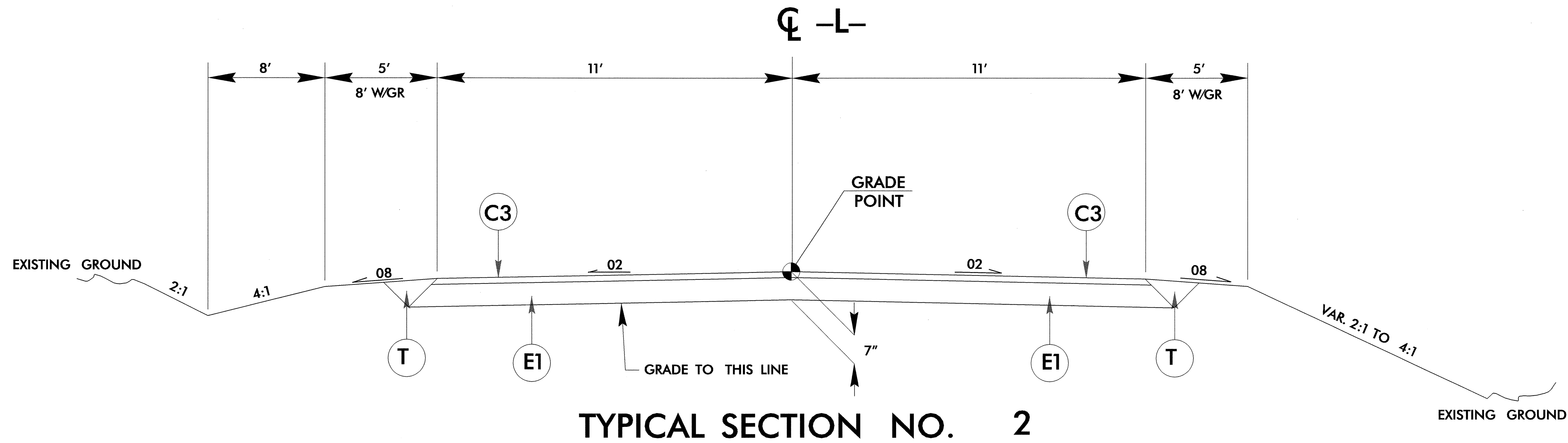


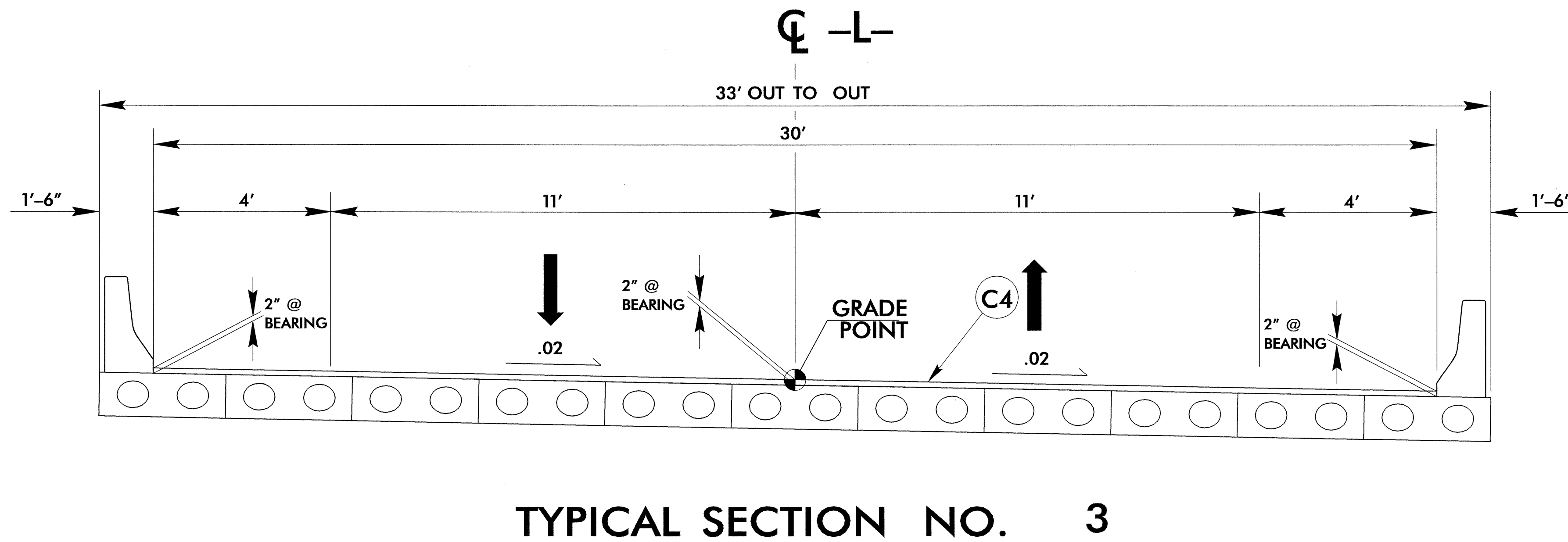
6/2/99

PROJECT REFERENCE NO. B-3629	SHEET NO. 2-A
ROADWAY DESIGN ENGINEER NORTH CAROLINA PROFESSIONAL SEAL 14571 JAMES A. SPEER 7/12/04	PAVEMENT DESIGN ENGINEER NORTH CAROLINA PROFESSIONAL SEAL 22896 CLARY S. MORRISON 7/14/04
C1	1 1/4" TYPE SF9.5A
C2	1 1/2" TYPE SF9.5A
C3	2 1/2" TYPE SF9.5A
C4	VAR. DEPTH TYPE SF9.5A
E1	4 1/2" TYPE B25.0B
E2	VAR. DEPTH TYPE B25.0B
J	6" ABC
P	PRIME COAT
T	EARTH MATERIAL
U	EXISTING PAVEMENT
W	WEDGING



**USE TYPICAL SECTION NO. 2**

-L- STA. 15+50.00 TO STA. 16+30.00  
 -L- STA. 24+50.00 TO STA. 25+55.00 (BEGIN BRIDGE)  
 -L- STA. 27+75.00 (END BRIDGE) TO STA. 31+00.00



**USE TYPICAL SECTION NO. 3**

-L- STA. 25+55.00 (BEGIN BRIDGE) TO STA. 27+75.00 (END BRIDGE)

03 JUN 2004 10:35  
 DWG: Gardner  
 AT: RD212399