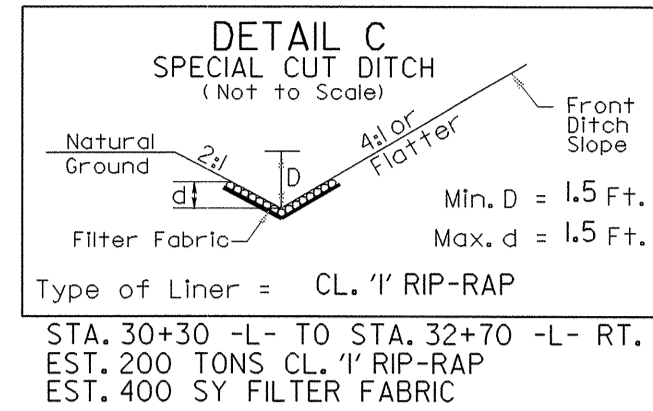
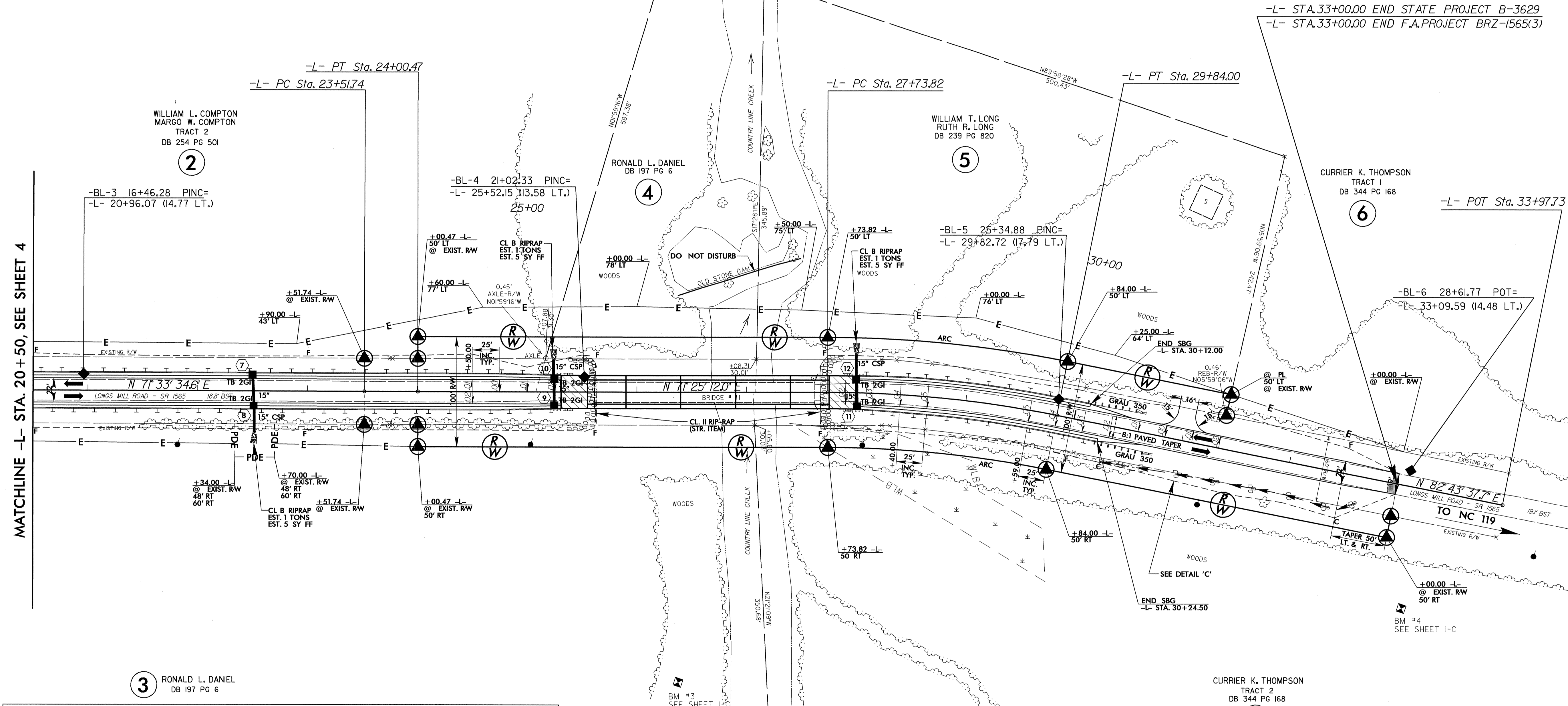


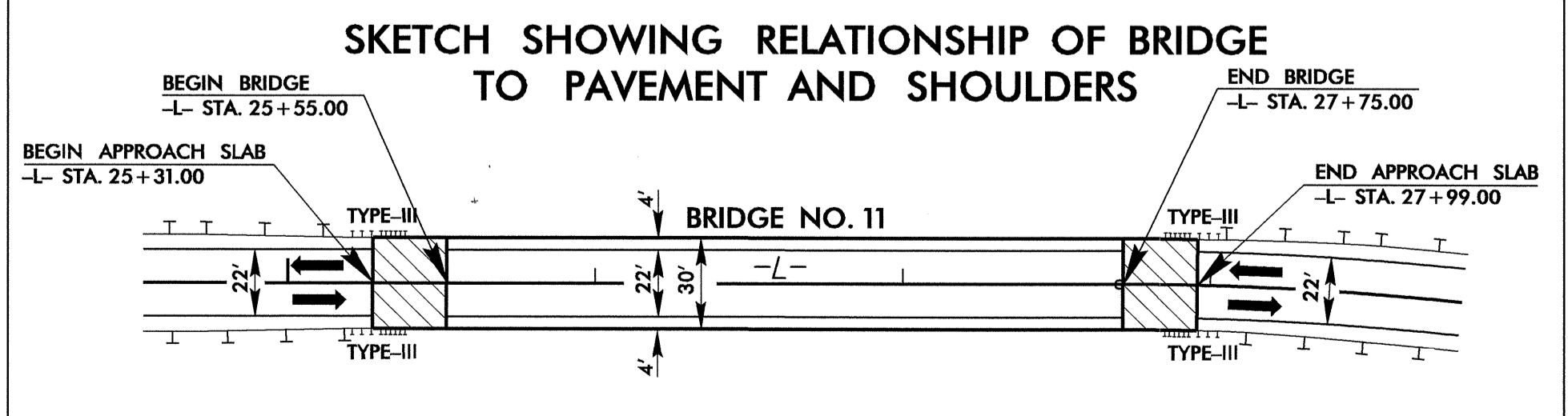
-L-	
PI Sta 23+76.11	PI Sta 28+79.25
$\Delta = 0^{\circ}08'22.6"$ (LT)	$\Delta = 1^{\circ}18'25.7"$ (RT)
$D = 0^{\circ}17'11.3"$	$D = 5^{\circ}22'47.6"$
$L = 48.73'$	$L = 210.17'$
$T = 24.37'$	$T = 105.43'$
$R = 20,000.00'$	$R = 1,065.00'$
SE=NC	SE= SEE PLANS



SHOULDER BERM GUTTER
 STA. 20+50.00 -L- TO STA. 25+31.00 -L- RT. & LT.
 STA. 27+99.00 -L- TO STA. 30+12.00 -L- LT.
 STA. 27+99.00 -L- TO STA. 30+24.50 -L- RT.
 SEE SHEET 2 AND STD. DRAWINGS



MATCHLINE -L- STA. 20 + 50, SEE SHEET 4



DESIGN EXCEPTION REQUIRED FOR SAG VERTICAL CURVES, SUPERELEVATION, AND STOPPING SIGHT DISTANCE.

SEE SHEET 8 FOR -L- LINE PROFILE
 SEE SHEETS S-1 THRU S-26 FOR STRUCTURE PLANS

8/17/99
 14-JUL-2004 08:00
 R:\Prj\03629_rdy_psh_s05.dgn
 DWGardner

REVISIONS