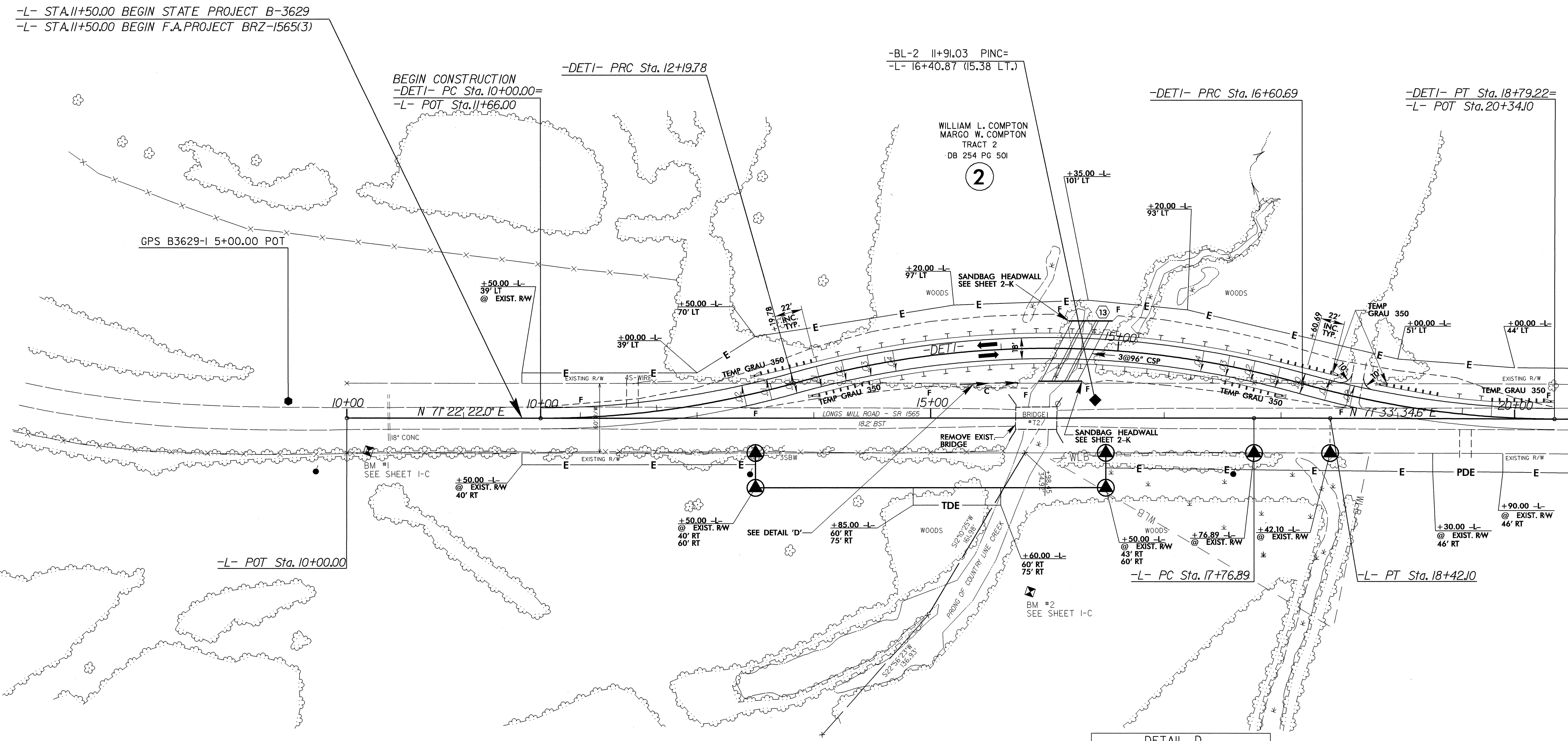
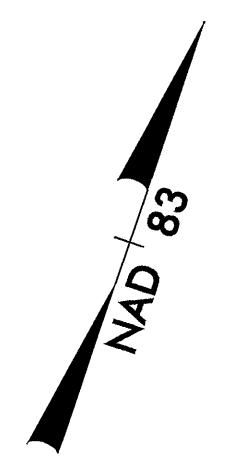


8/17/99

PROJECT REFERENCE NO. B-3629	SHEET NO. 6
RW SHEET NO.	
ROADWAY DESIGN ENGINEER 	HYDRAULICS ENGINEER
-DETOUR 1-	

V DESIGN = 45 MPH

-DETI-		-L-	
PI Sta 11+10.59	PI Sta 14+45.99	PI Sta 17+70.64	PI Sta 18+09.49
$\Delta = 15^{\circ} 44' 26.0''$ (LT)	$\Delta = 31^{\circ} 34' 41.0''$ (RT)	$\Delta = 15^{\circ} 39' 02.4''$ (LT)	$\Delta = 0^{\circ} 11' 12.6''$ (RT)
$D = 7^{\circ} 09' 43.1''$	$D = 7^{\circ} 09' 43.1''$	$D = 7^{\circ} 09' 43.1''$	$D = 0^{\circ} 17' 11.3''$
$L = 219.78'$	$L = 440.91'$	$L = 218.52'$	$L = 65.22'$
$T = 110.59'$	$T = 226.21'$	$T = 109.95'$	$T = 32.61'$
$R = 800.00'$	$R = 800.00'$	$R = 800.00'$	$R = 20,000.00'$
SE = VAR., SEE PLANS	SE = 0.04	SE = VAR., SEE PLANS	SE = NC

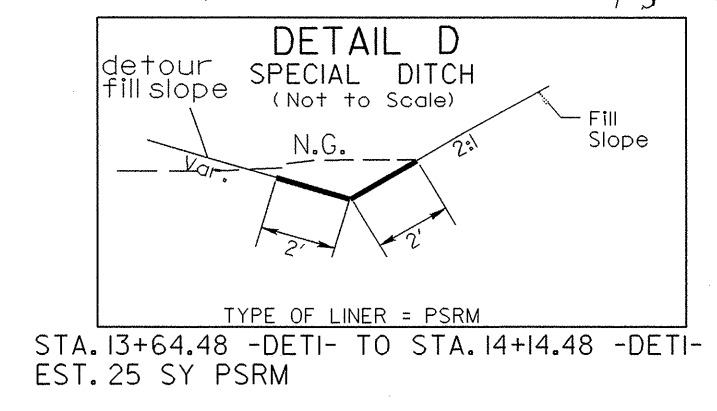


REVISIONS

MATCHLINE -L- STA. 20 + 50, SEE SHEET 7

DAVID W. SIMS
DB 239 PG 454

1



RONALD L. DANIEL
DB 197 PG 6

3

SEE SHEET 9 FOR -DETI- LINE PROFILE

JUN 20 2004 15:10
JBGauthier AT d:\psh_s06.dgn