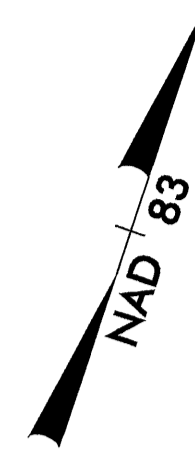


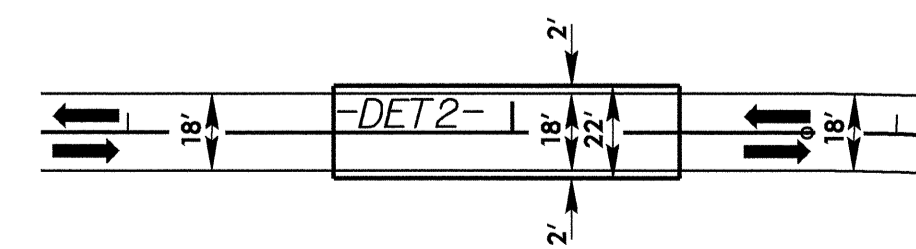
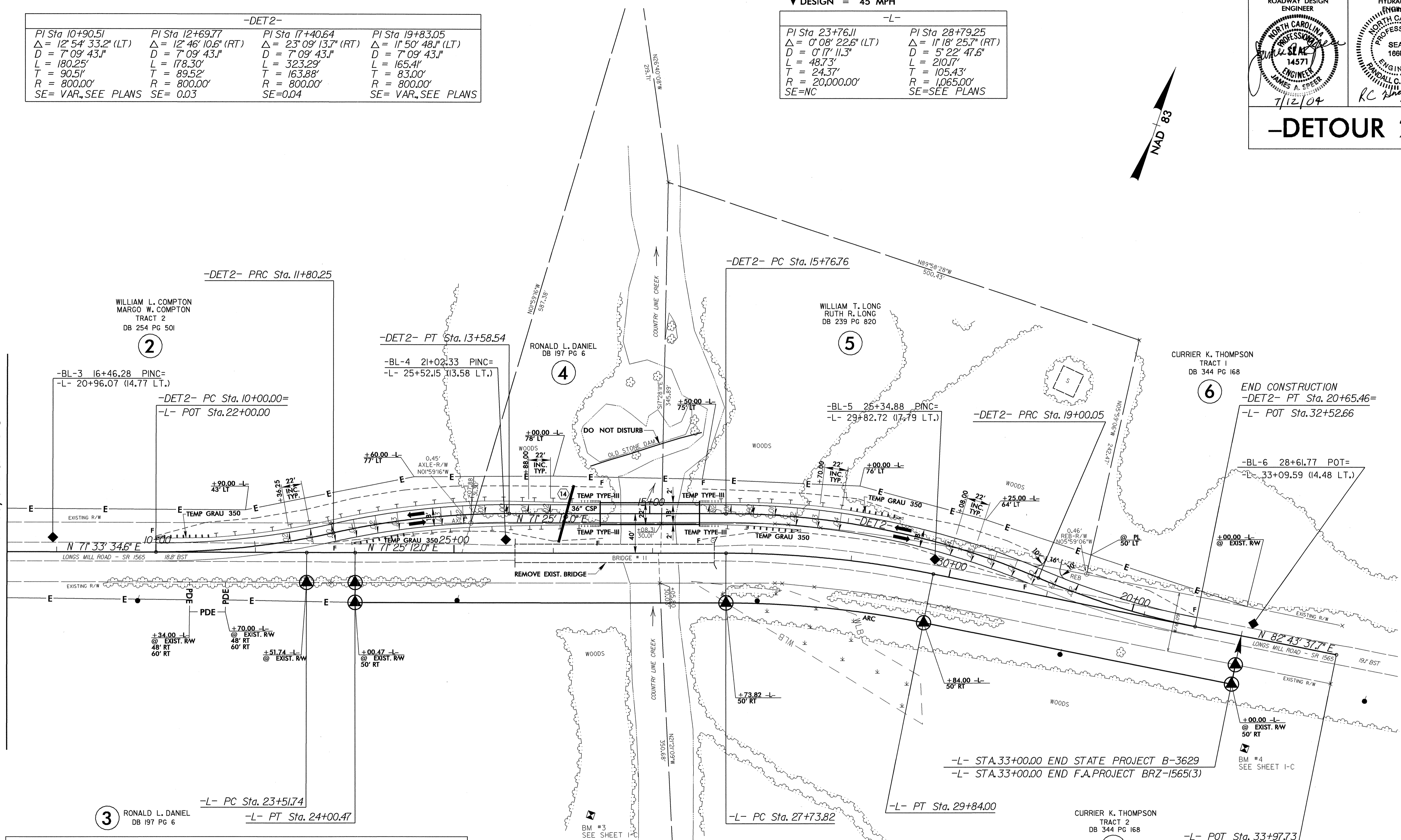
**V** DESIGN = 45 MPH

-DET2-			
PI Sta 10+90.51	PI Sta 12+69.77	PI Sta 17+40.64	PI Sta 19+83.05
$\Delta = 12^\circ 54' 33.2" (LT)$	$\Delta = 12^\circ 46' 10.6" (RT)$	$\Delta = 23^\circ 09' 13.7" (RT)$	$\Delta = 1^\circ 50' 48.1" (LT)$
$D = 7^\circ 09' 43.1"$	$D = 7^\circ 09' 43.1"$	$D = 7^\circ 09' 43.1"$	$D = 7^\circ 09' 43.1"$
$L = 180.25'$	$L = 178.30'$	$L = 323.29'$	$L = 165.4'$
$T = 90.51'$	$T = 89.52'$	$T = 163.88'$	$T = 83.00'$
$R = 800.00'$	$R = 800.00'$	$R = 800.00'$	$R = 800.00'$
SE= VAR., SEE PLANS	SE= 0.03	SE=0.04	SE= VAR., SEE PLANS

-L-	
PI Sta 23+76.11	PI Sta 28+79.25
$\Delta = 0^\circ 08' 22.6" (LT)$	$\Delta = 1^\circ 18' 25.7" (RT)$
$D = 0^\circ 17' 11.3"$	$D = 5^\circ 22' 47.6"$
$L = 48.73'$	$L = 210.17'$
$T = 24.37'$	$T = 105.43'$
$R = 20,000.00'$	$R = 1,065.00'$
SE=NC	SE=SEE PLANS



MATCHLINE -L- STA. 20+50. SEE SHEET 6



"USE FOR TEMPORARY BRIDGE ONLY"

SEE SHEET 9 FOR -DET2- LINE PROFILE

REVISIONS

8/17/99  
21-JUN-2004 15:57  
R:\proj\3629\rdy\_psh\_s07.dgn  
JBGauthier