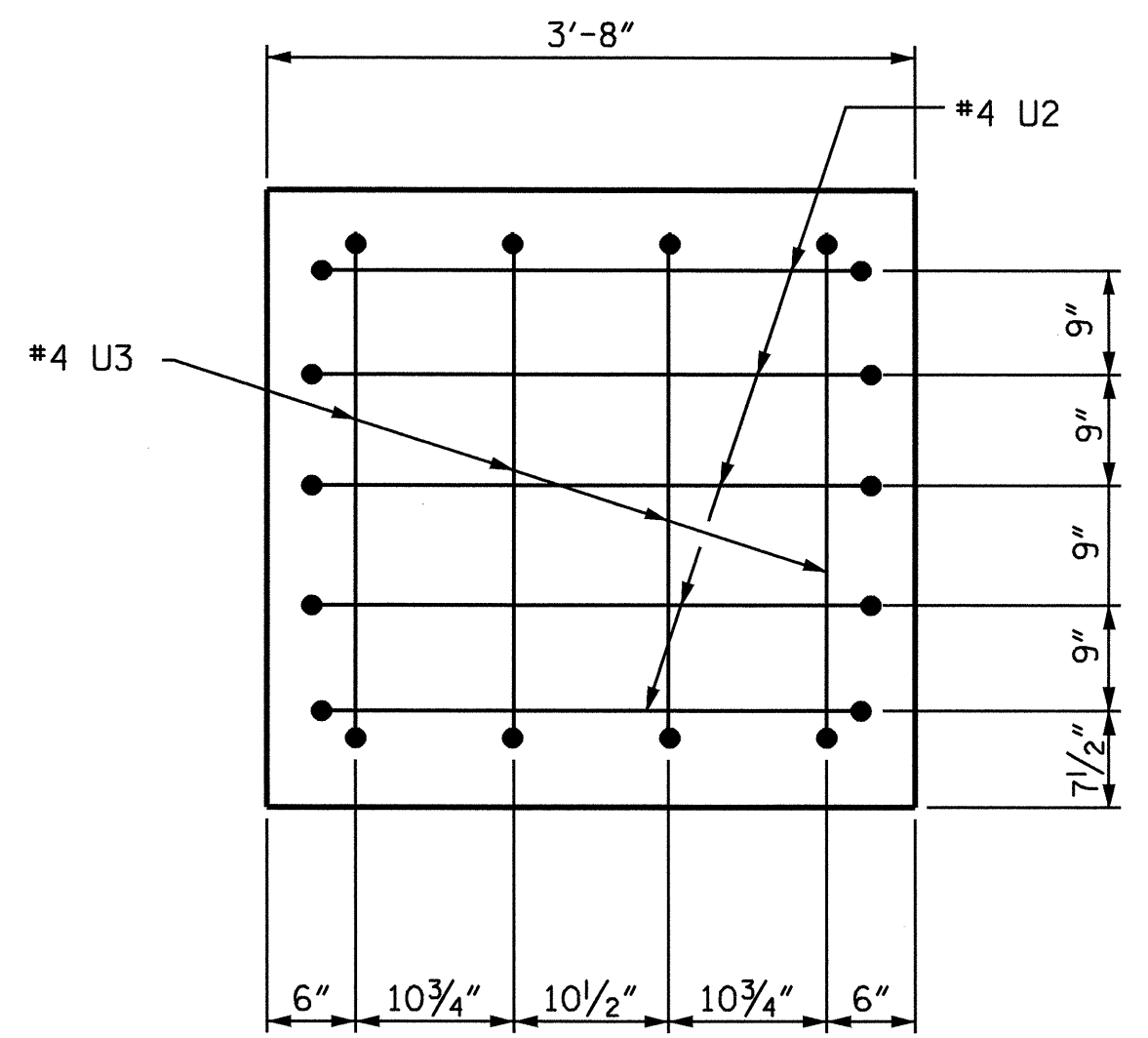
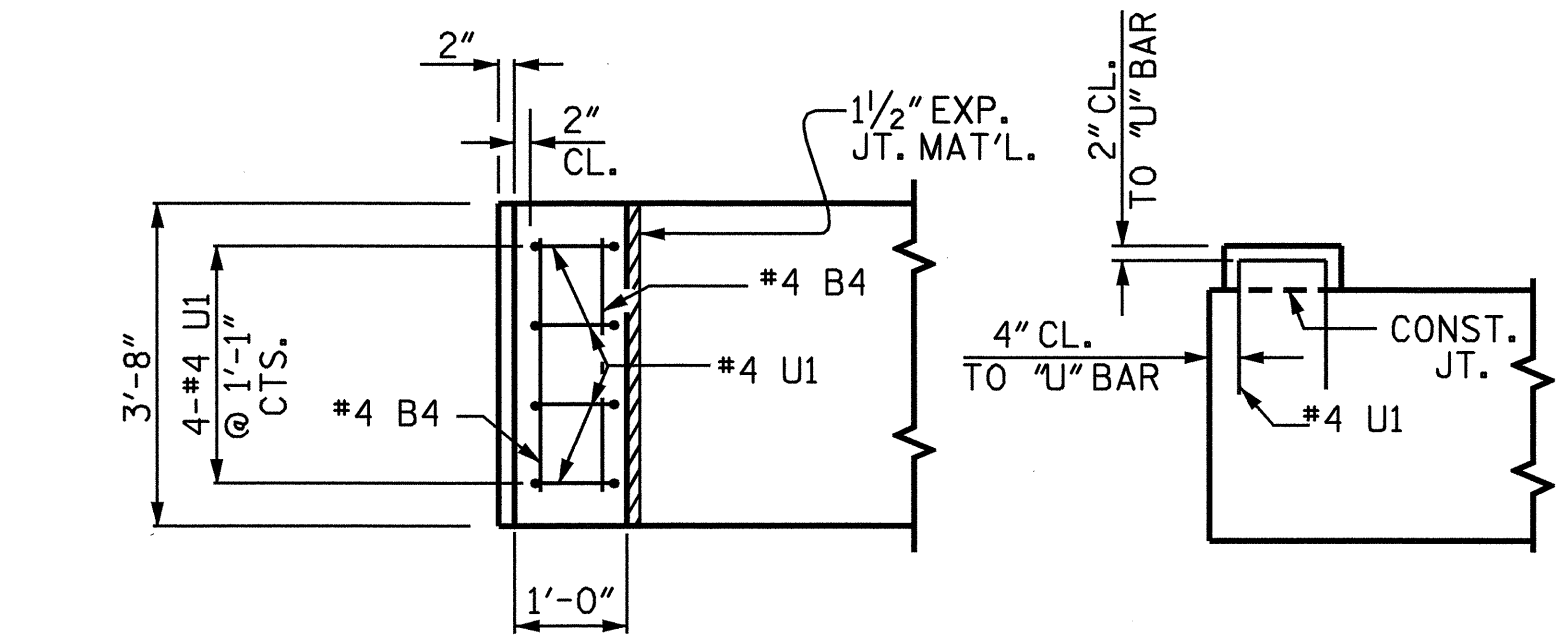


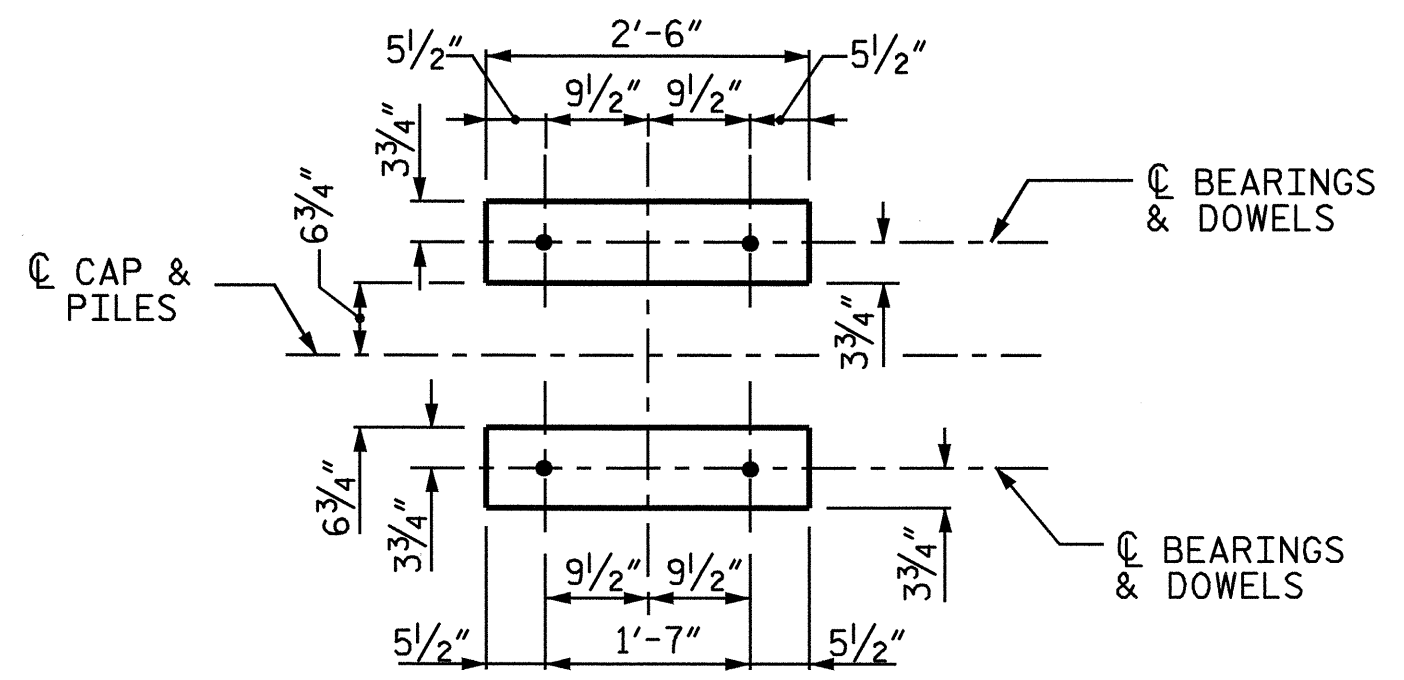
SECTION A-A



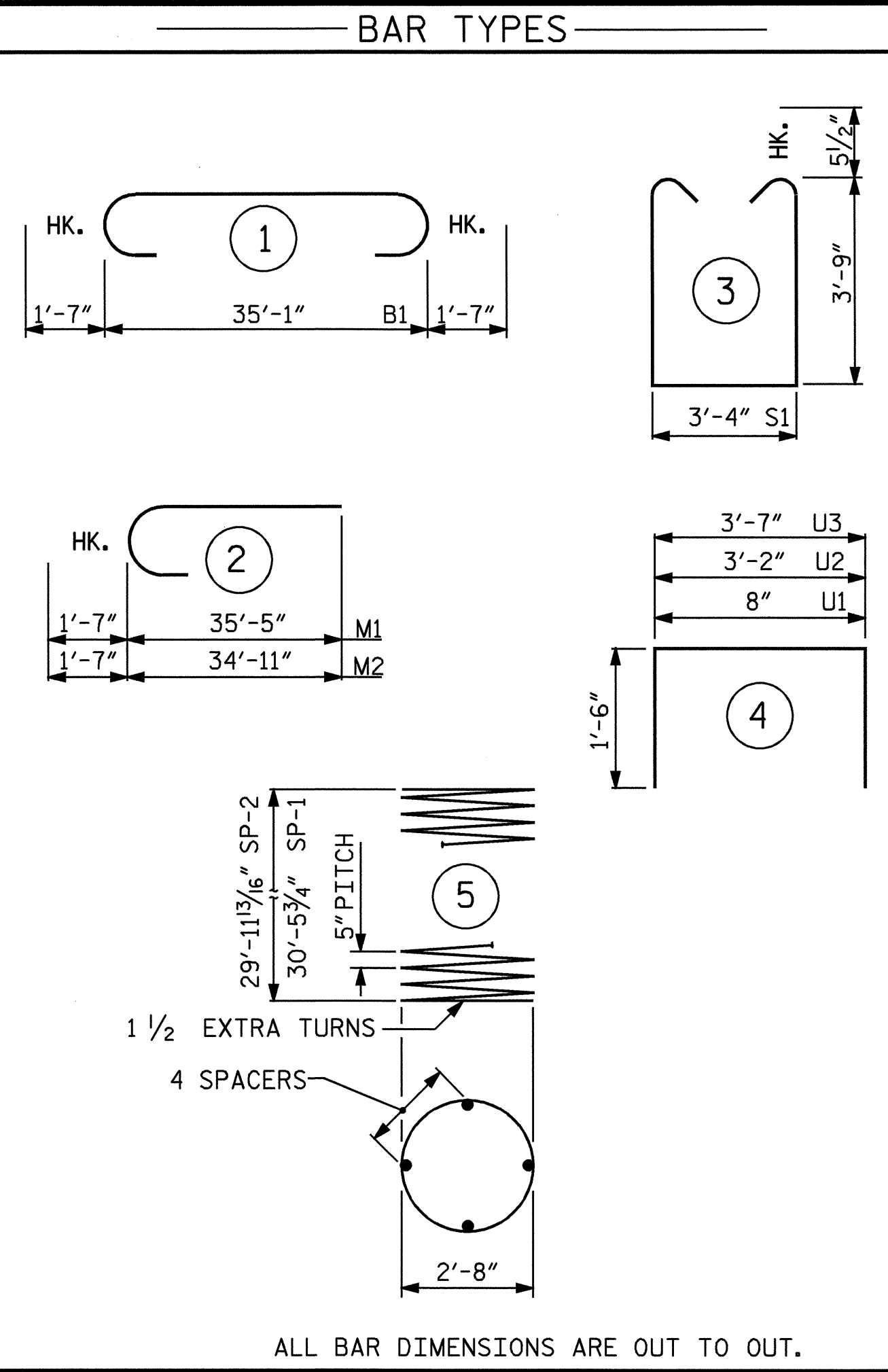
END VIEW X-X



PLAN ELEVATION
DETAIL A

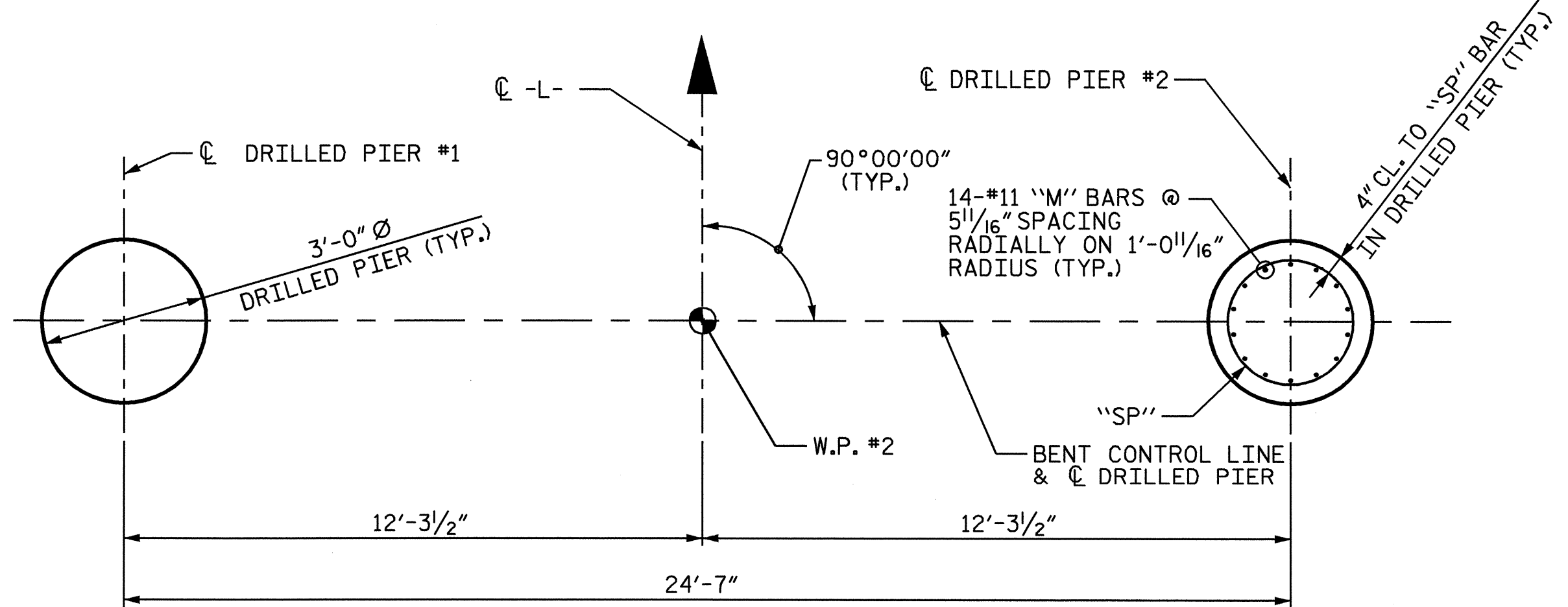


DETAIL "B"



* THE SP-1 SPIRAL REINFORCING STEEL SHALL BE W31 OR D-31 COLD DRAWN WIRE OR #5 PLAIN OR DEFORMED BAR.

BILL OF MATERIAL BENT #1					
BAR	NO	SIZE	TYPE	LENGTH	WEIGHT
B1	6	11	1	38'-3"	1219
B2	6	5	STR	35'-3"	221
B3	6	11	STR	35'-3"	1124
B4	4	4	STR	3'-4"	9
D1	44	6	STR	1'-6"	99
M1	14	11	2	37'-0"	2752
M2	14	11	2	37'-6"	2789
S1	30	5	3	11'-9"	368
U1	8	4	4	3'-8"	20
U2	10	4	4	6'-2"	41
U3	8	4	4	6'-7"	36
REINFORCING STEEL					lbs. 8678
SP-1	1	*	5	507'-7"	529
SP-2	1	*	5	499'-3"	521
SPIRAL COLUMN REINFORCING STEEL					lbs. 1050
CLASS A CONCRETE BREAKDOWN					
POUR #2 (CAP)				20.5	C.Y.
POUR #3 LATERAL GUIDES				0.1	C.Y.
TOTAL					20.6 C.Y.
DRILLED PIERS CONCRETE BREAKDOWN					
POUR #1 (DRILLED PIERS)				16.0	C.Y.
3'-0" Ø DRILLED PIERS (NOT IN SOIL) LINEAR FEET 23.0					
3'-0" Ø DRILLED PIERS (IN SOIL) LINEAR FEET 38.1					
PERMANENT STEEL CASING FOR 3'-0" Ø DRILLED PIERS FEET 35.1					
CROSS HOLE SONIC LOGGING EACH 1.0					
CSL TUBES LINEAR FEET 264.5					



PLAN OF DRILLED PIERS

PROJECT NO. B-3629
CASWELL COUNTY
 STATION: 26+65.00 -L-
 SHEET 2 OF 2

REVISIONS						SHEET NO.
NO.	BY:	DATE:	NO.	BY:	DATE:	S-13
1			3			TOTAL SHEETS 26
2			4			



DRAWN BY: G. O. COOPER DATE: 3/15/04
 CHECKED BY: J.G. KHARVA DATE: 4/21/04