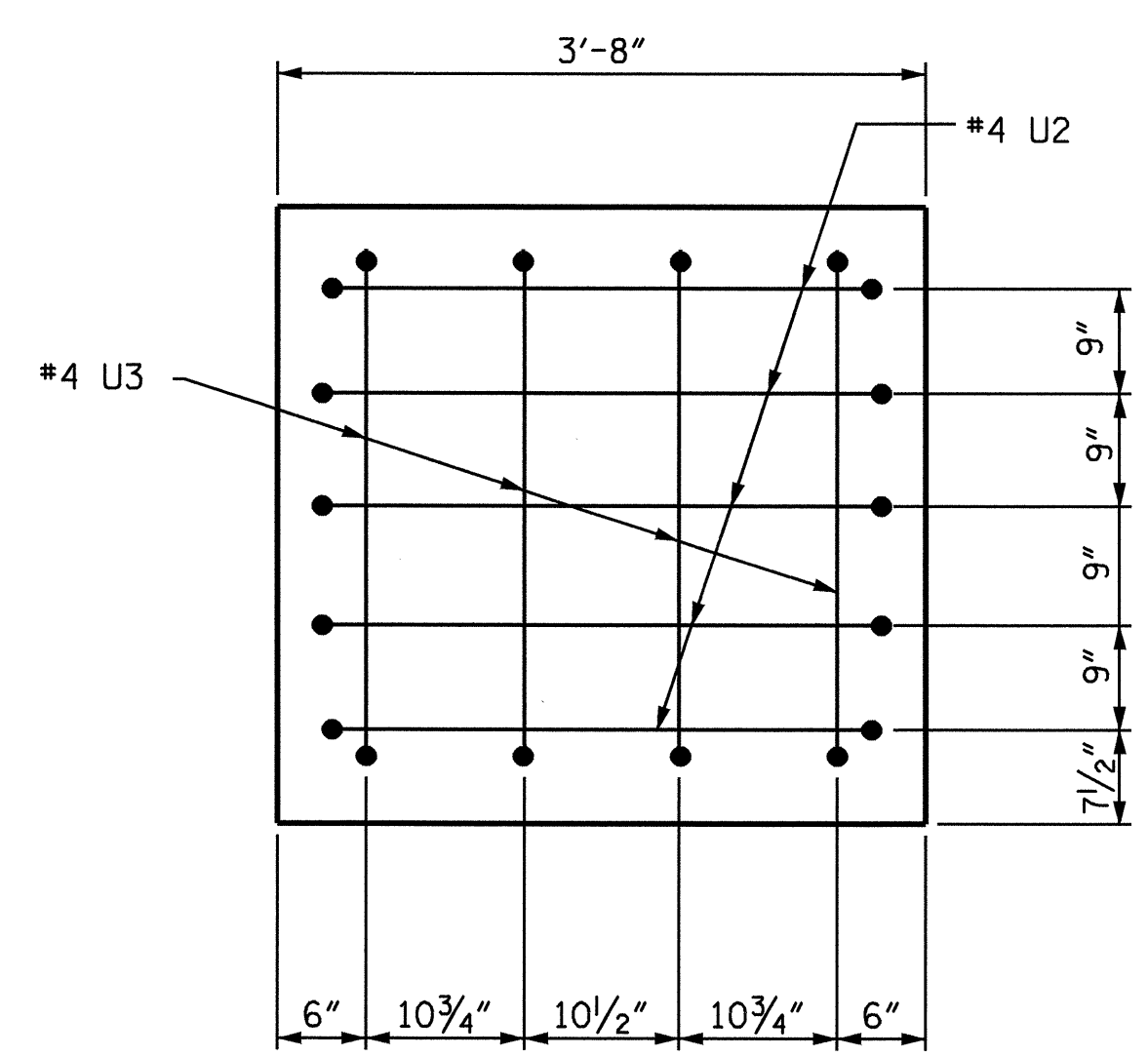
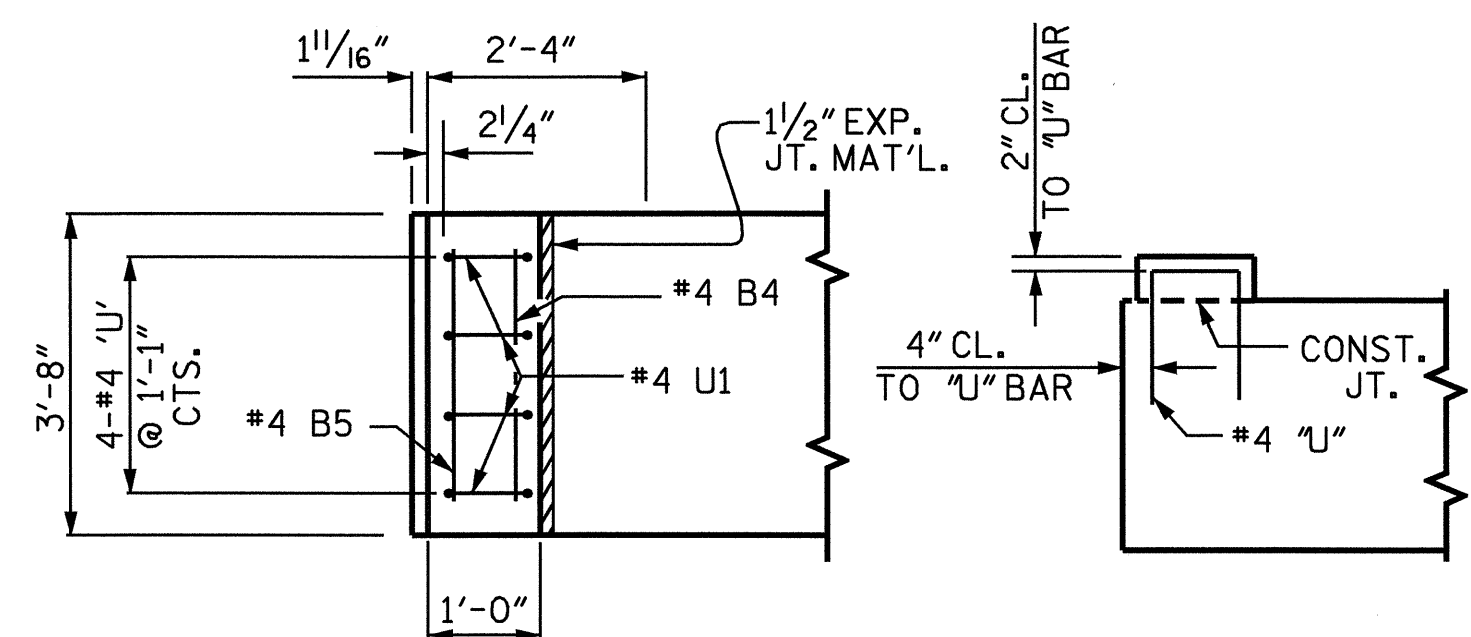


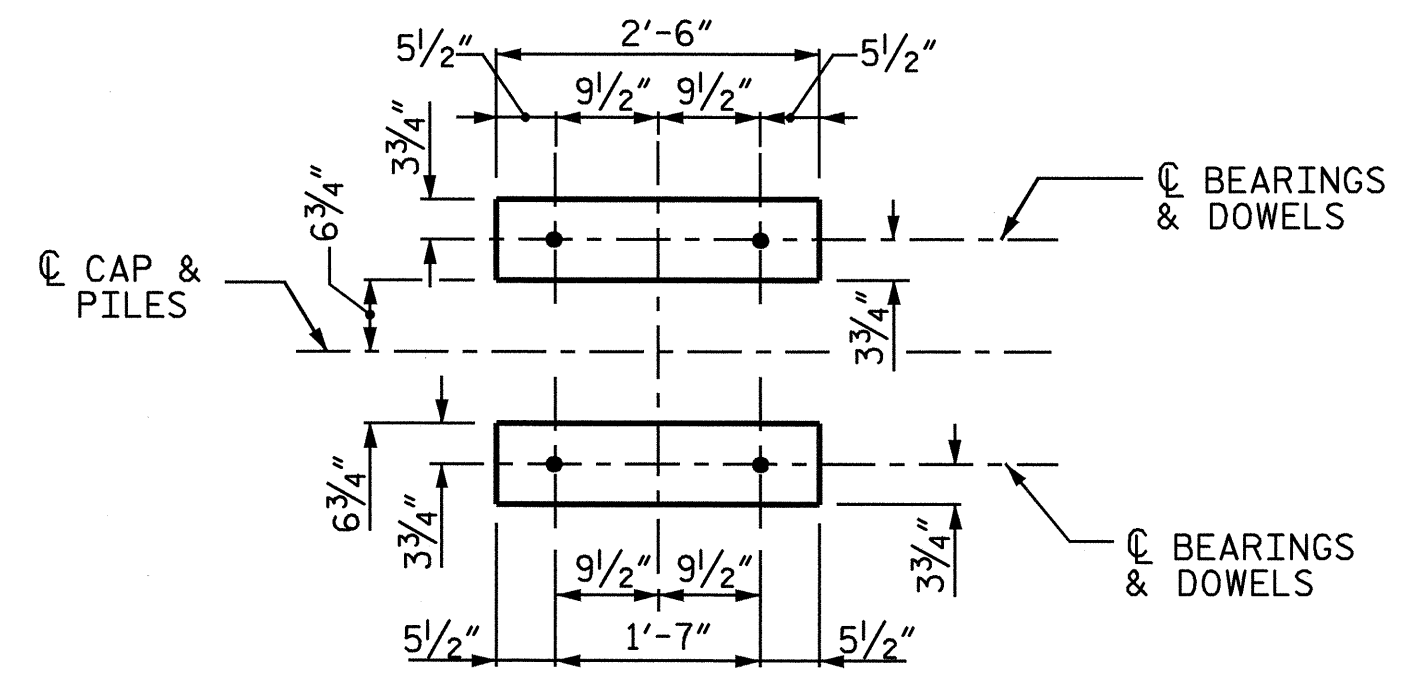
SECTION A-A



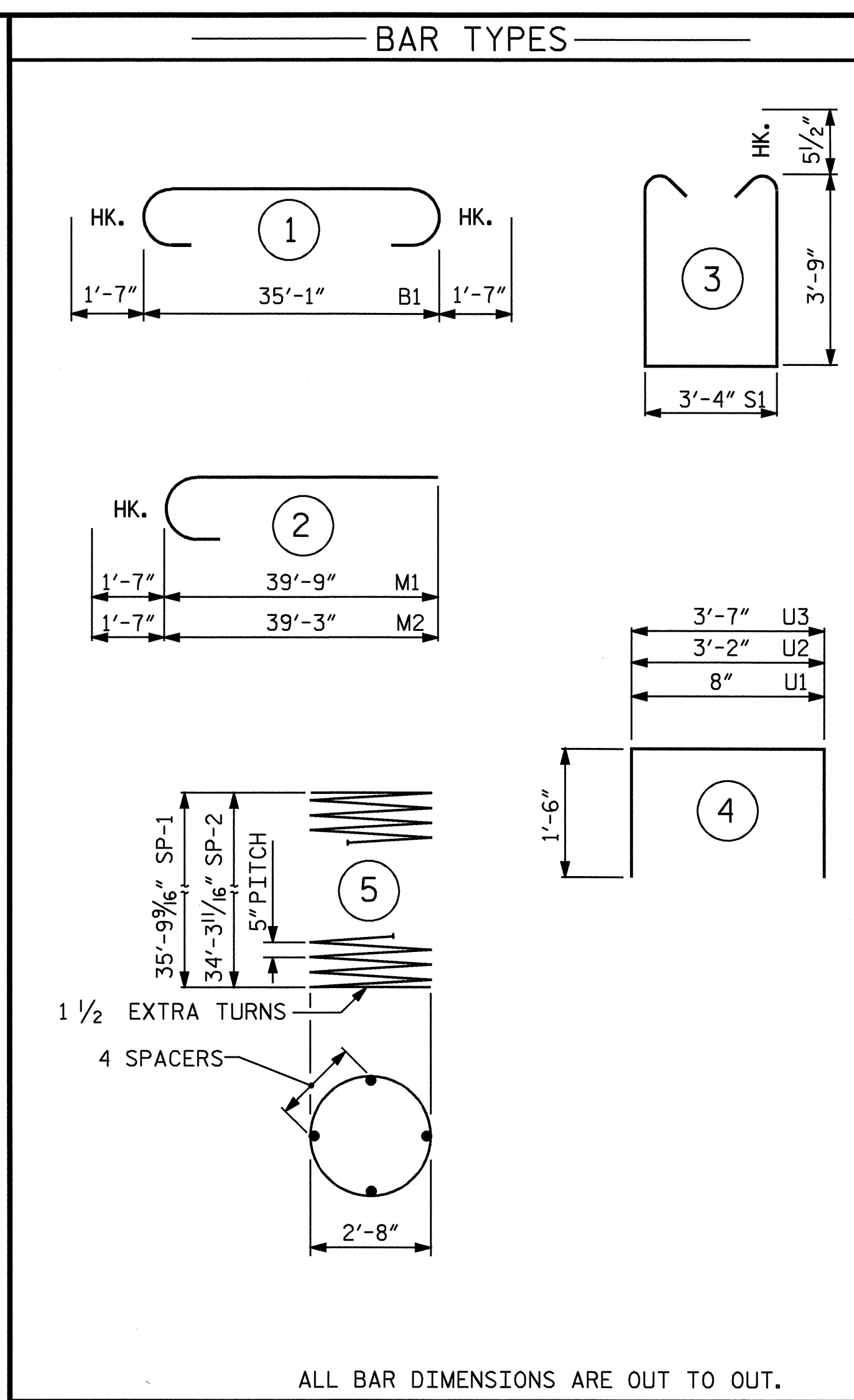
END VIEW X-X



PLAN ELEVATION  
DETAIL A

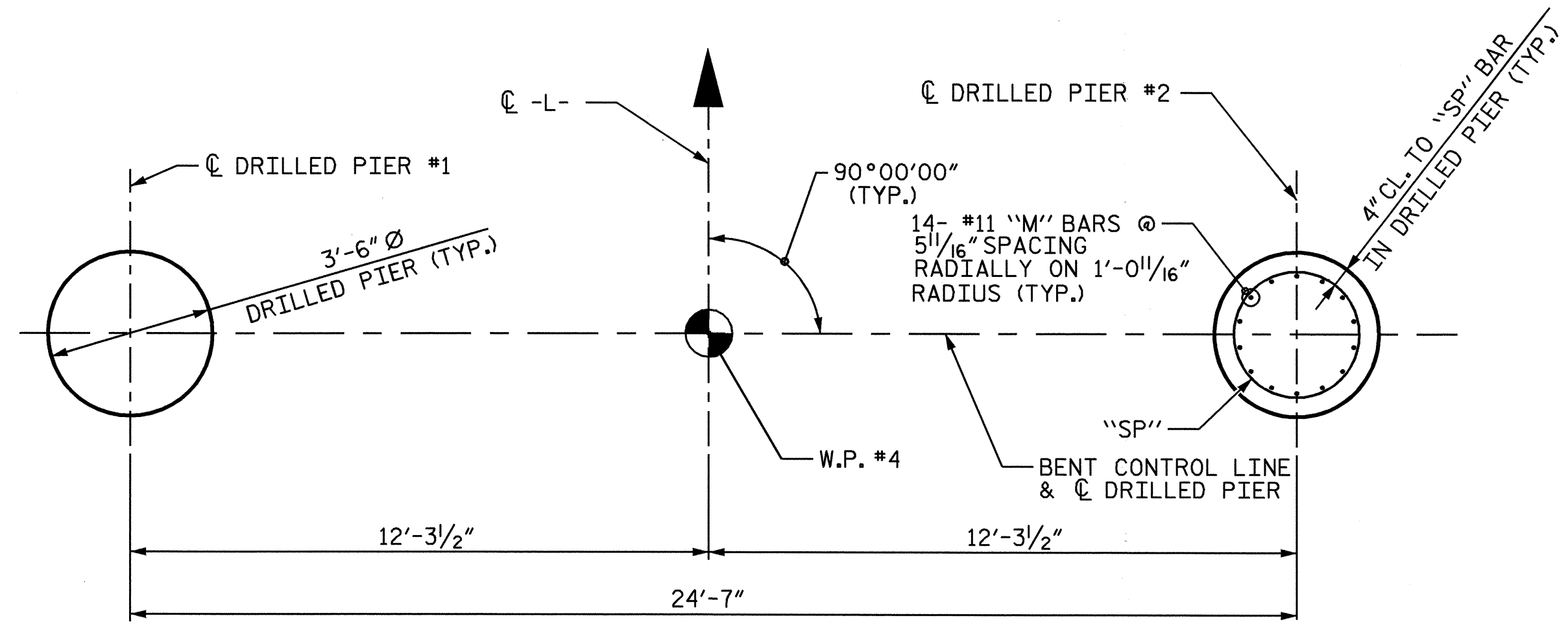


DETAIL B



\* THE SP-1 SPIRAL REINFORCING STEEL SHALL BE W31 OR D-31 COLD DRAWN WIRE OR #5 PLAIN OR DEFORMED BAR.

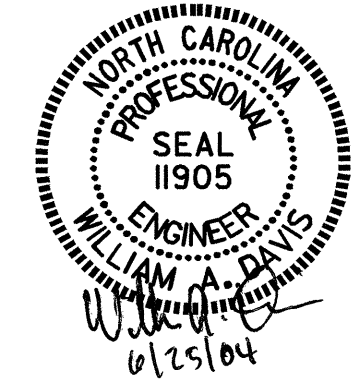
BILL OF MATERIAL					
BENT #3					
BAR	NO	SIZE	TYPE	LENGTH	WEIGHT
B1	6	11	1	38'-3"	1219
B2	6	5	STR	35'-3"	221
B3	6	11	STR	35'-3"	1124
B4	4	4	STR	3'-4"	9
D1	44	6	STR	1'-6"	99
M1	14	11	STR	41'-4"	3074
M2	14	11	STR	40'-10"	3037
S1	30	5	3	11'-9"	368
U1	8	4	4	3'-8"	20
U2	10	4	4	6'-2"	41
U3	8	9	4	6'-7"	36
REINFORCING STEEL lbs.					9248
SP-1	2	*	5	577'-6"	602
SP-2	2	*	5	569'-2"	594
SPIRAL COLUMN REINFORCING STEEL lbs.					1196
CLASS A CONCRETE BREAKDOWN					
POUR #2 (CAP)				20.5	C.Y.
POUR #3 LATERAL GUIDE				0.1	C.Y.
TOTAL				20.6	C.Y.
DRILLED PIERS CONCRETE BREAKDOWN					
POUR #1 (DRILLED PIERS)				18.3	C.Y.
3'-0" Ø DRILLED PIERS (NOT IN SOIL) LINEAR FEET				26.0	
3'-0" Ø DRILLED PIERS (IN SOIL) LINEAR FEET				43.8	
PERMANENT STEEL CASING FOR 3'-0" Ø DRILLED PIER				47.8	
CROSS HOLE SONIC LOGGING EACH				1	
CSL TUBES LINEAR FEET				297.9	



PLAN OF COLUMNS & DRILLED PIERS

PROJECT NO. B-3629  
CASWELL COUNTY  
 STATION: 26+65.00 -L-  
 SHEET 2 OF 2

REVISIONS						SHEET NO. S-17
NO.	BY:	DATE:	NO.	BY:	DATE:	
1			3			TOTAL SHEETS 26
2			4			



DRAWN BY : G.O. COOPER DATE : 3/15/04  
 CHECKED BY : J.G. KHARVA DATE : 4/21/04