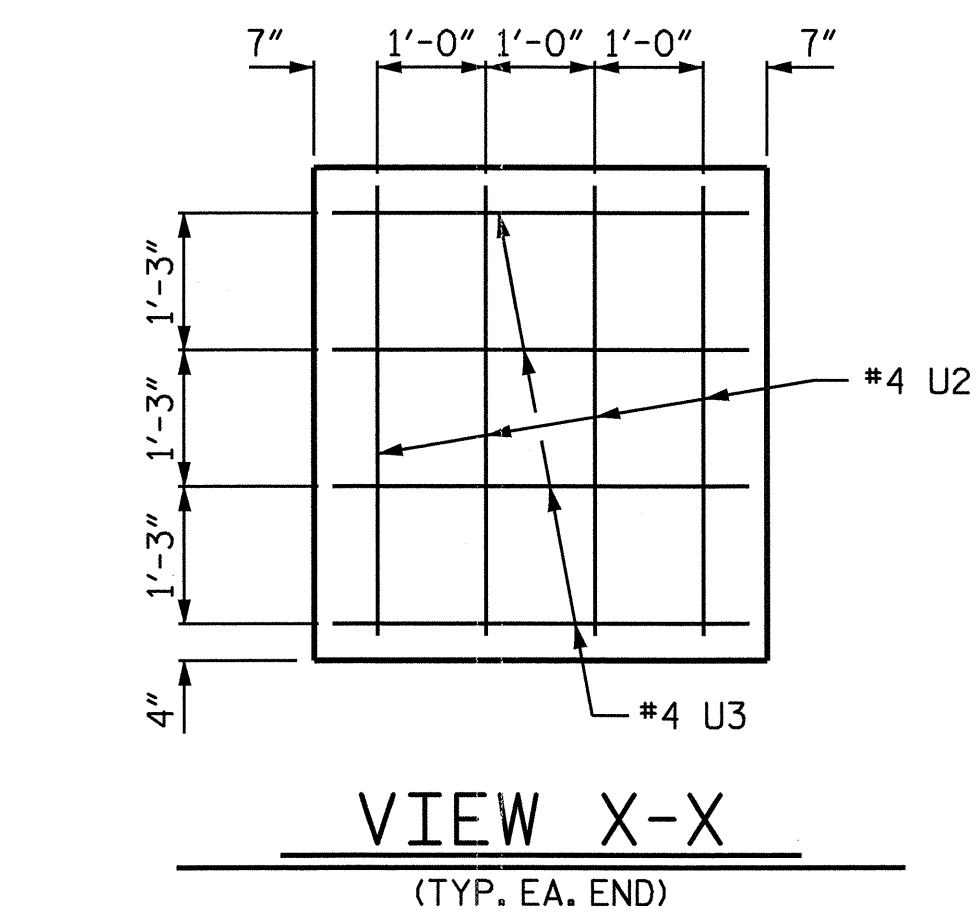
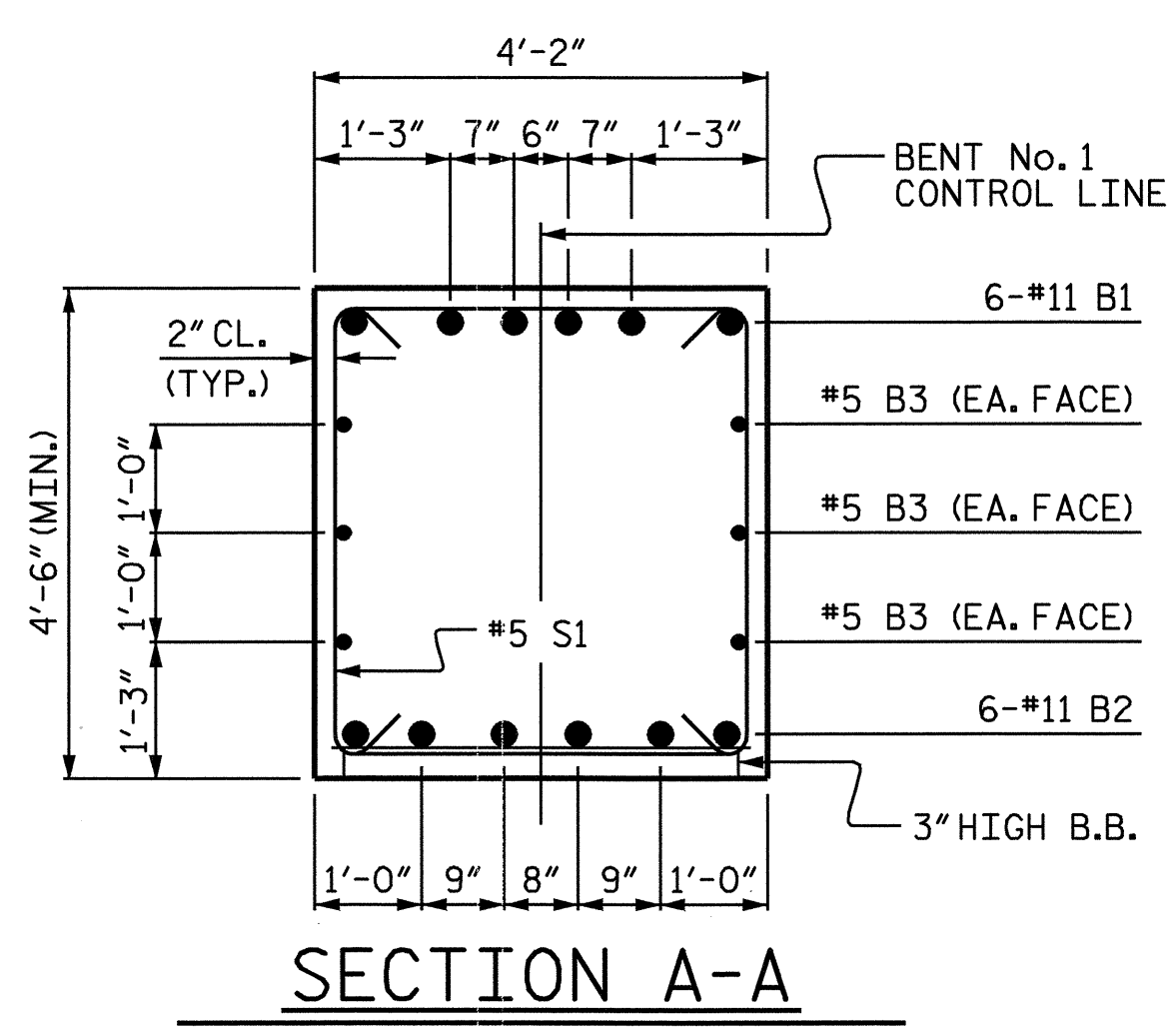


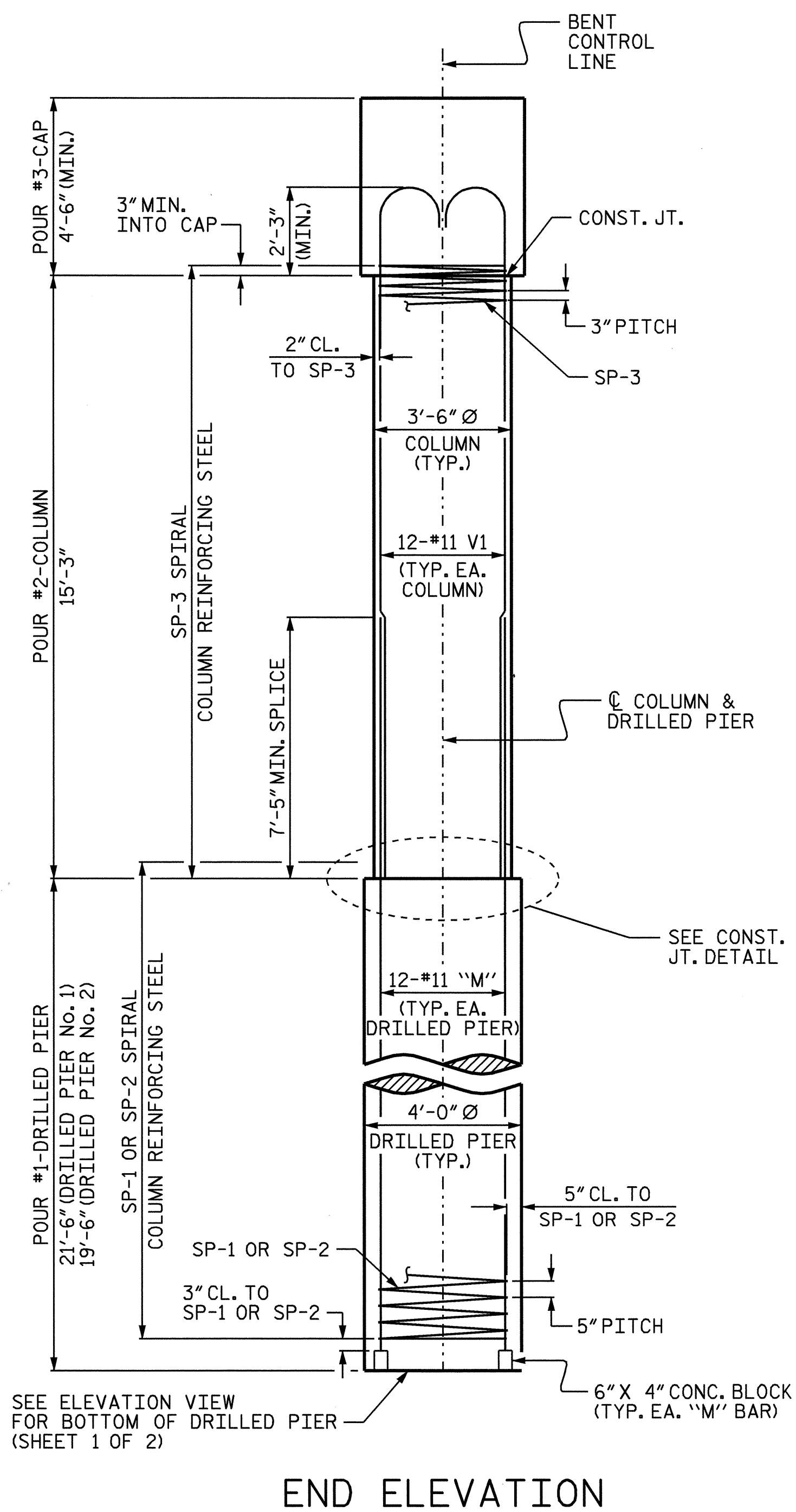
PLAN OF DRILLED PIERS



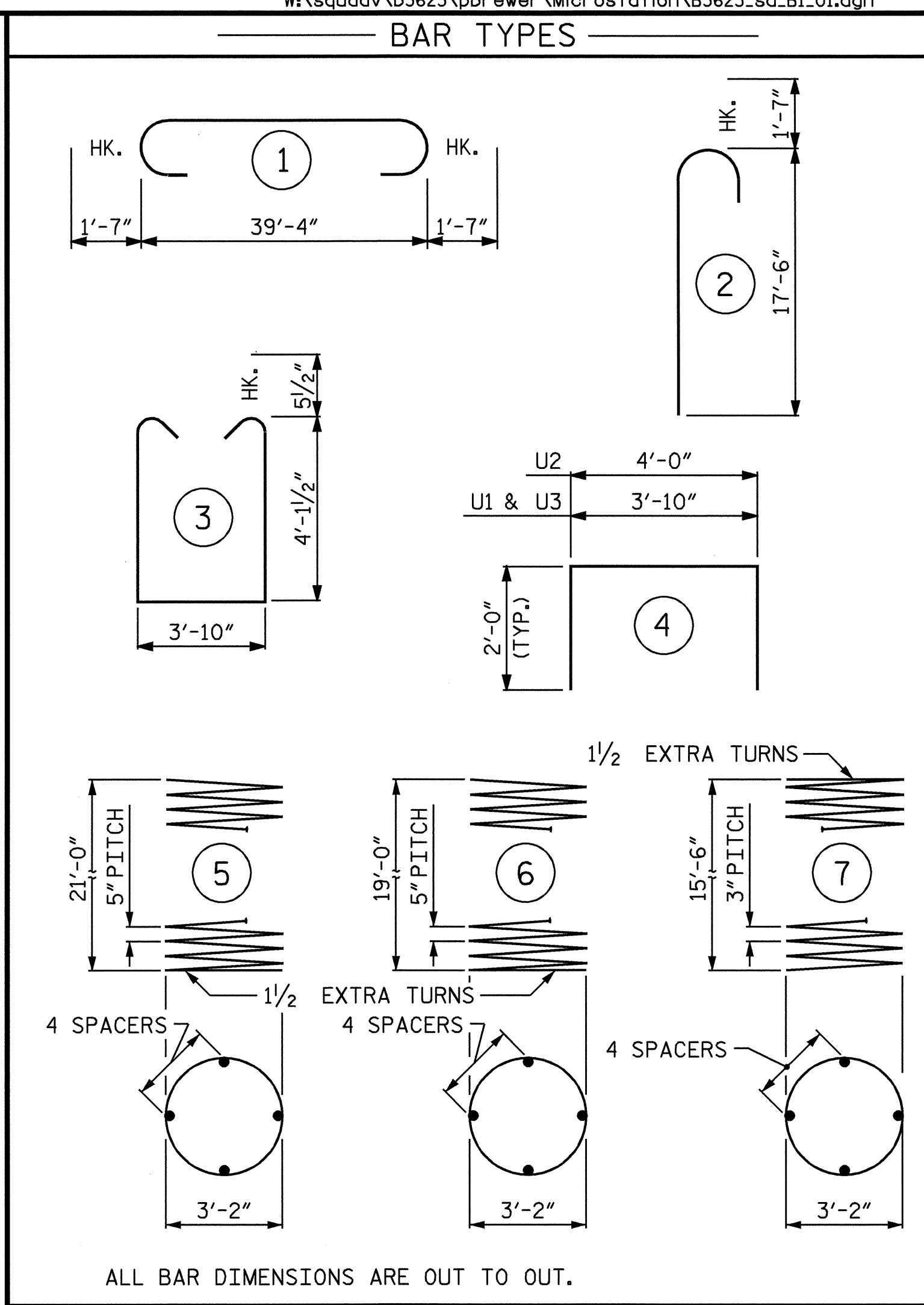
VIEW X-X
(TYP. EA. END)



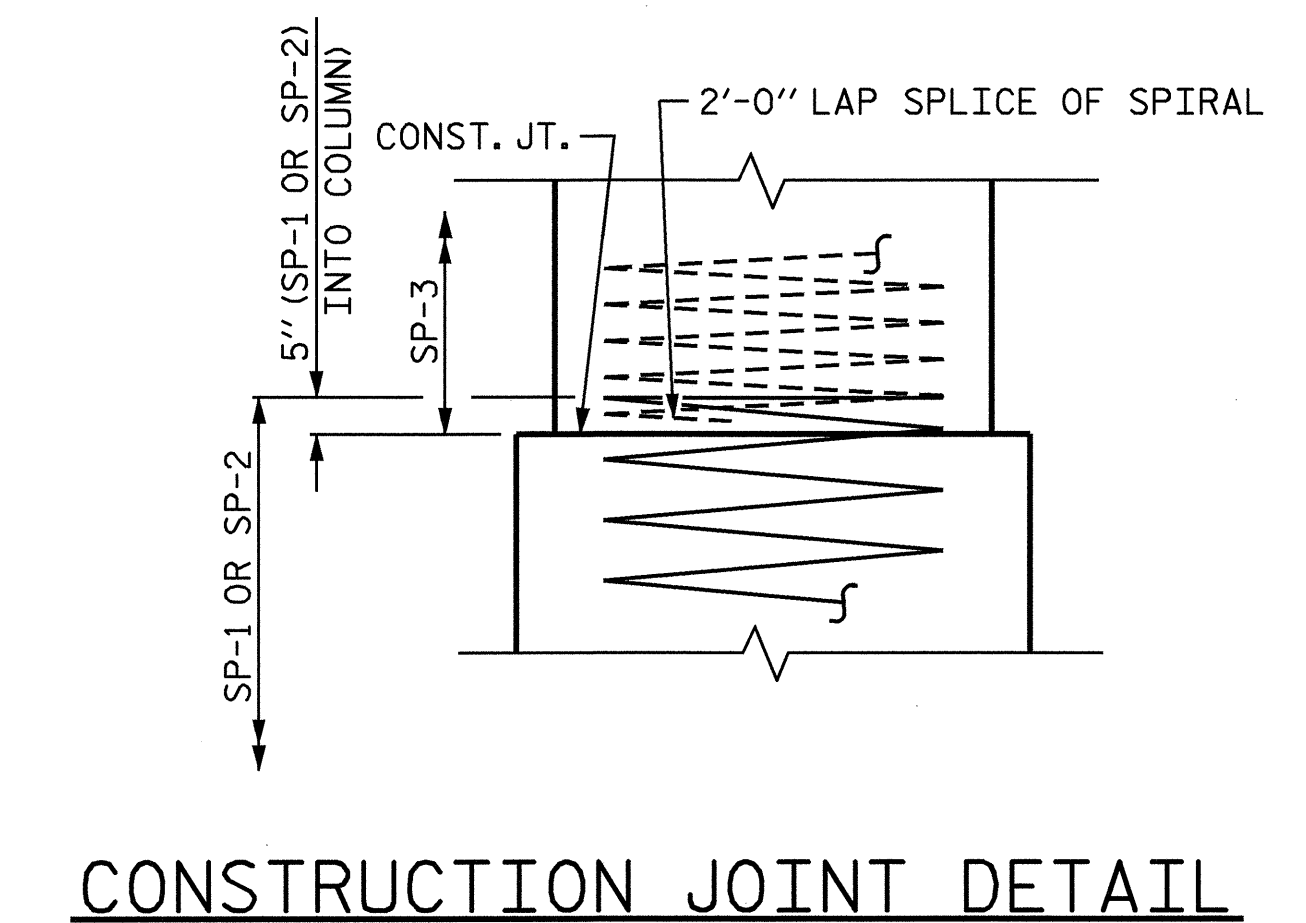
SECTION A-A



END ELEVATION



ALL BAR DIMENSIONS ARE OUT TO OUT.



CONSTRUCTION JOINT DETAIL

BILL OF MATERIAL

BENT No. 1					
BAR NO.	NO.	SIZE	TYPE	LENGTH	WEIGHT
B1	6	#11	1	42'-6"	1355
B2	6	#11	STR	39'-6"	1259
B3	6	#5	STR	39'-6"	247
B4	6	#4	STR	3'-0"	12
M1	12	#11	STR	31'-5"	2003
M2	12	#11	STR	29'-5"	1875
S1	44	#5	3	13'-0"	597
U1	35	#4	4	7'-10"	183
U2	8	#4	4	8'-0"	43
U3	8	#4	4	7'-10"	42
V1	24	#11	2	19'-1"	2433
REINFORCING STEEL					10,049 LBS.
SP-1	1	*	5	509'-4"	531
SP-2	1	*	6	470'-2"	490
SP-3	2	**	7	628'-7"	840
SPIRAL COLUMN REINFORCING STEEL					1,861 LBS.

* THE SP-1 AND SP-2 SPIRAL REINFORCING STEEL SHALL BE W31 OR D-31 COLD DRAWN WIRE OR #5 PLAIN OR DEFORMED BAR.
** THE SP-3 SPIRAL REINFORCING STEEL SHALL BE W20 OR D-20 COLD DRAWN WIRE OR #4 PLAIN OR DEFORMED BAR.

CLASS A CONCRETE (C.Y.)	
POUR #2 (COLUMN)	= 10.9
POUR #3 (CAP)	= 28.3
TOTAL	= 39.2

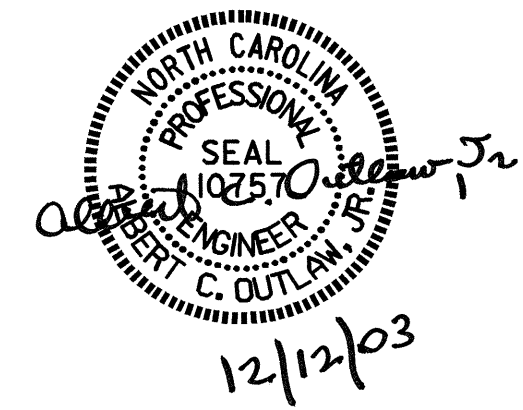
DRILLED PIERS:	
DRILLED PIER CONCRETE (C.Y.)	
POUR #1 (DRILLED PIER)	= 19.1
4'-0" Ø DRILLED PIER IN SOIL	= 29.0 LIN. FT.
4'-0" Ø DRILLED PIER NOT IN SOIL	= 12.0 LIN. FT.
PERMANENT STEEL CASING FOR 4'-0" Ø DRILLED PIER	= 25.6 LIN. FT.
CSL TUBES	= 184.0 LIN. FT.

PROJECT NO. B-3623
CABARRUS COUNTY
 STATION: 18+37.50 -L-

SHEET 2 OF 2

STATE OF NORTH CAROLINA
 DEPARTMENT OF TRANSPORTATION
 RALEIGH

SUBSTRUCTURE
 BENT No. 1



DRAWN BY: P.C. BREWER DATE: 11/12/03
 CHECKED BY: C.H. SIMPSON DATE: 11/17/03

REVISIONS						SHEET NO.
NO.	BY:	DATE:	NO.	BY:	DATE:	S-26
1			3			TOTAL SHEETS
2			4			34