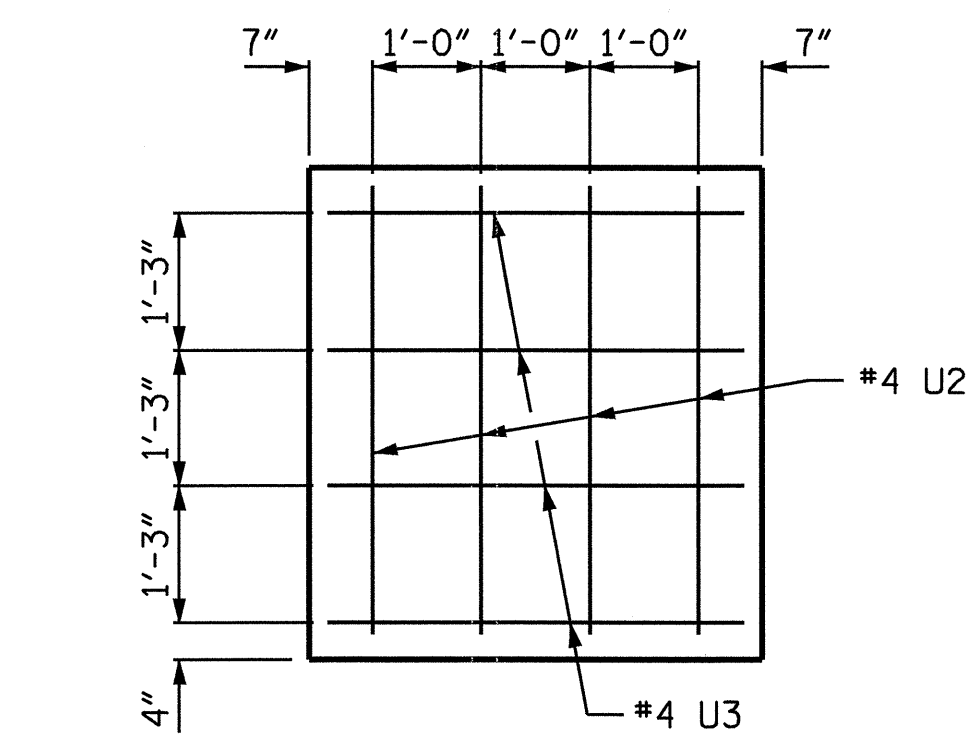
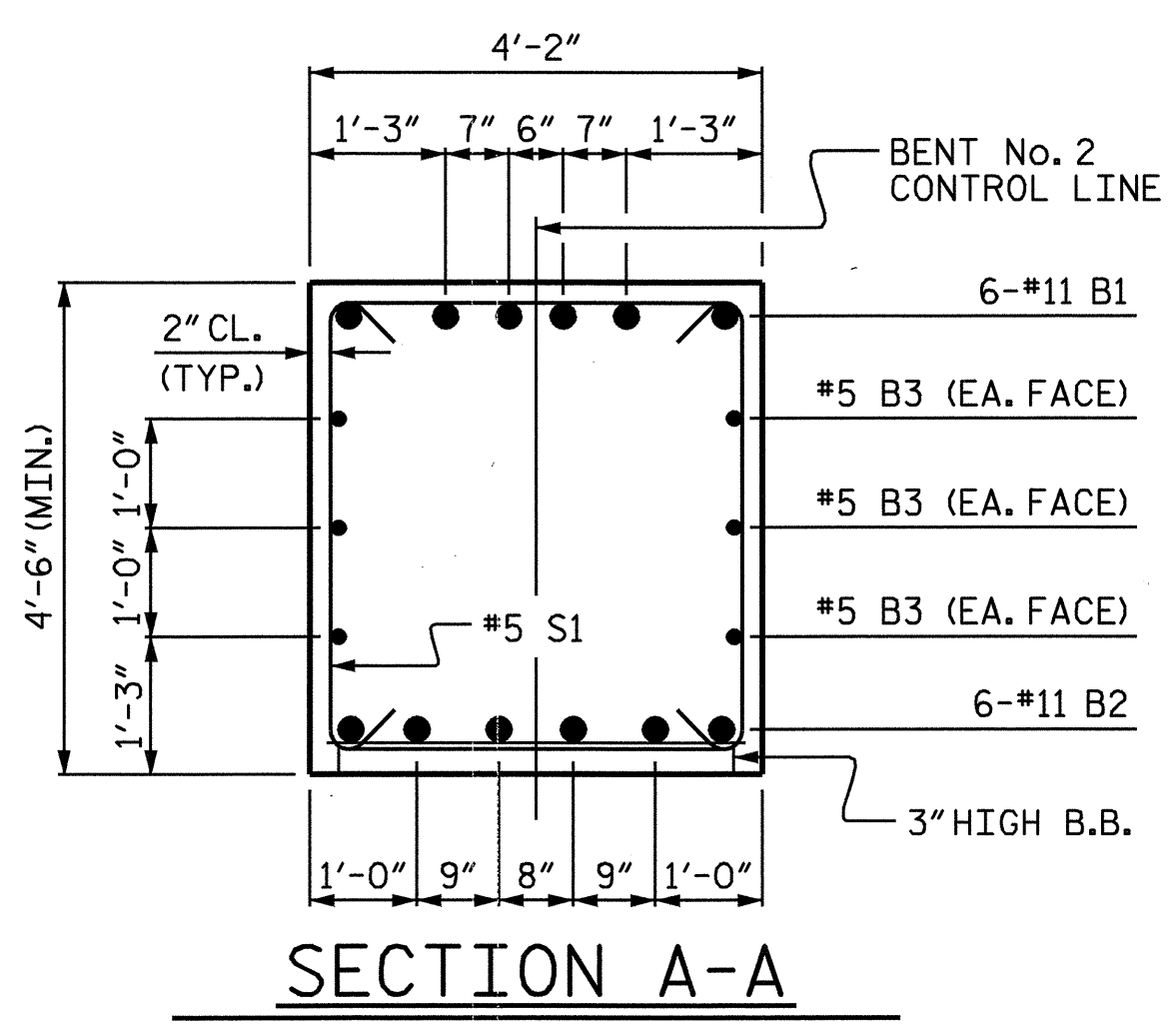


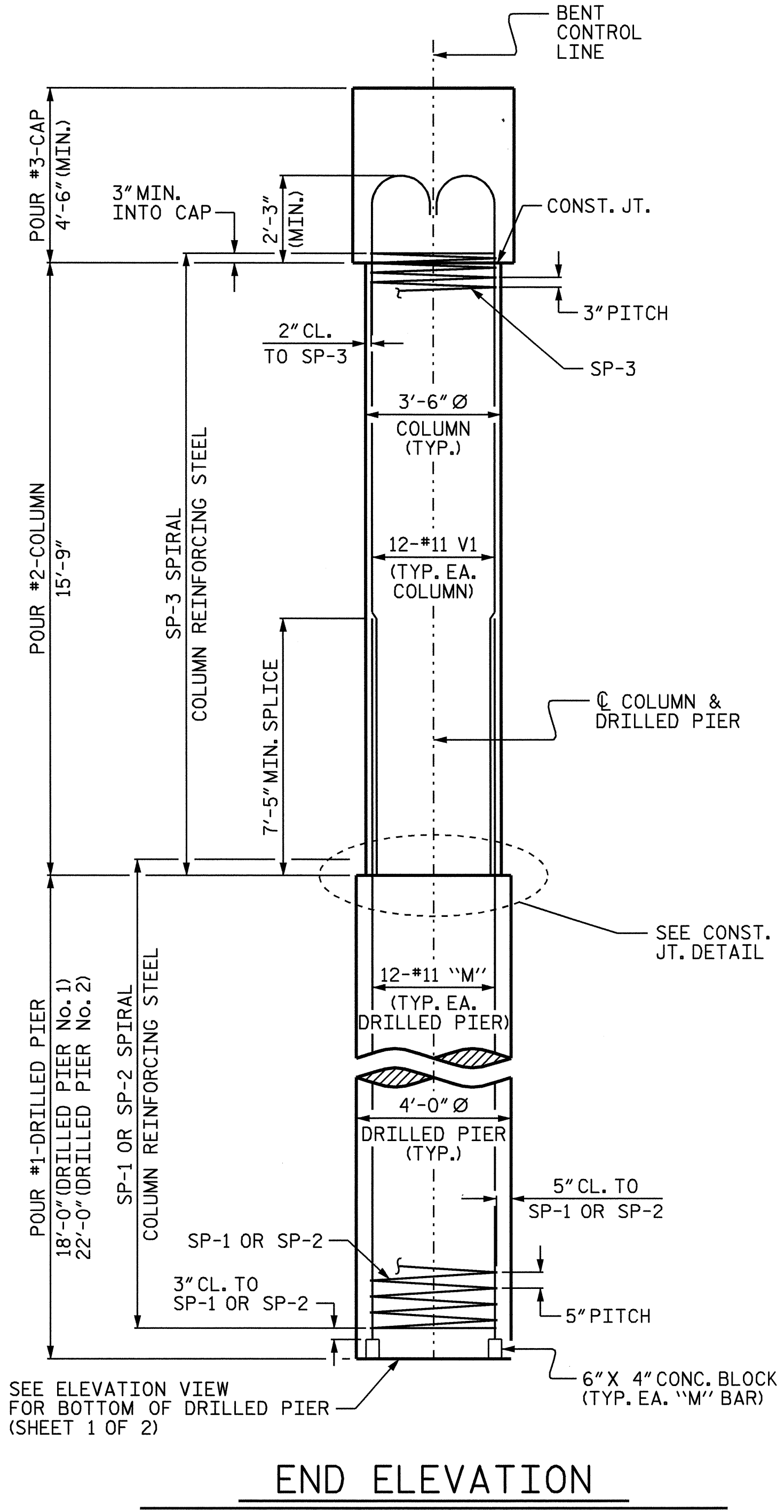
PLAN OF DRILLED PIERS



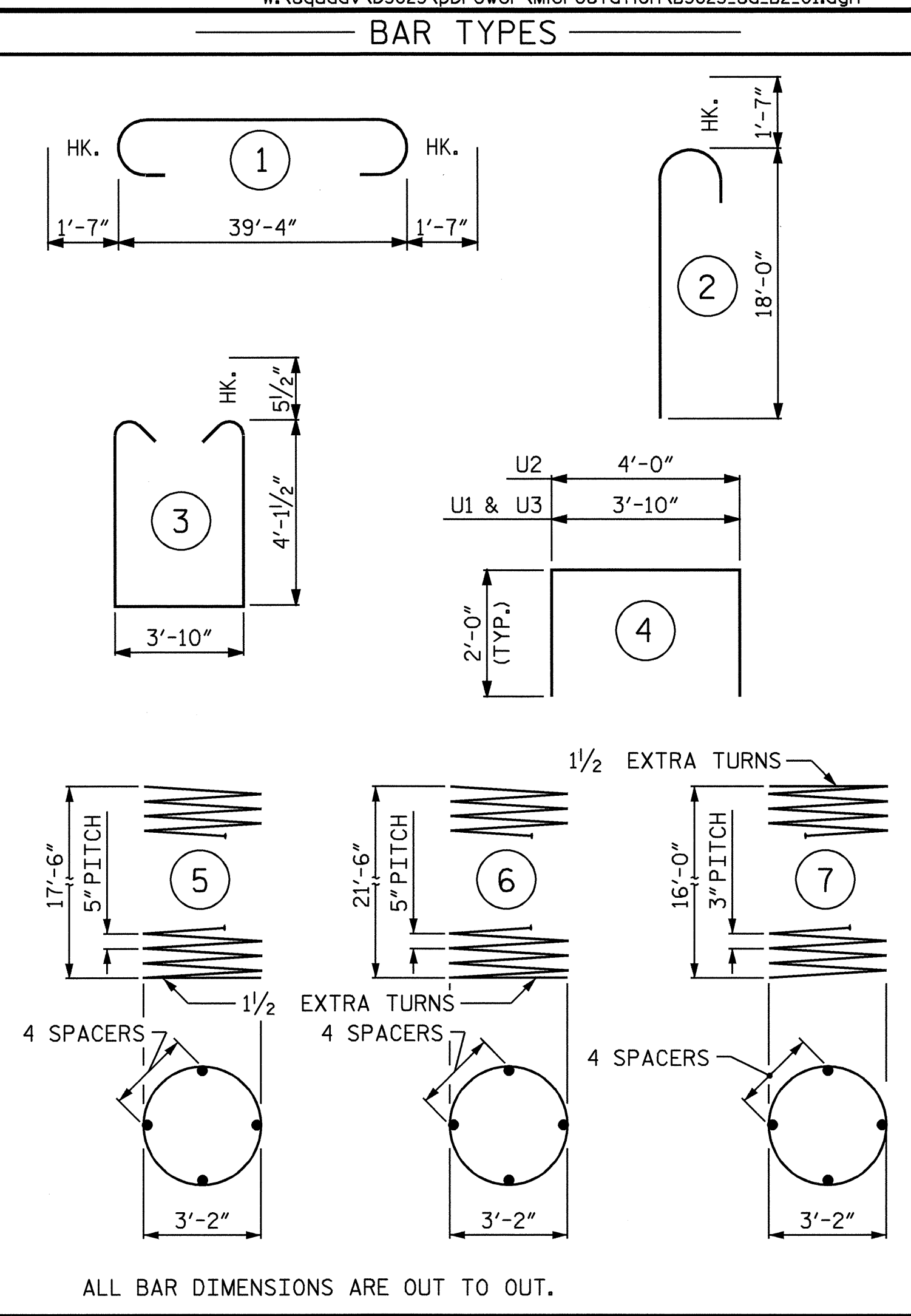
VIEW X-X
(TYP. EA. END)



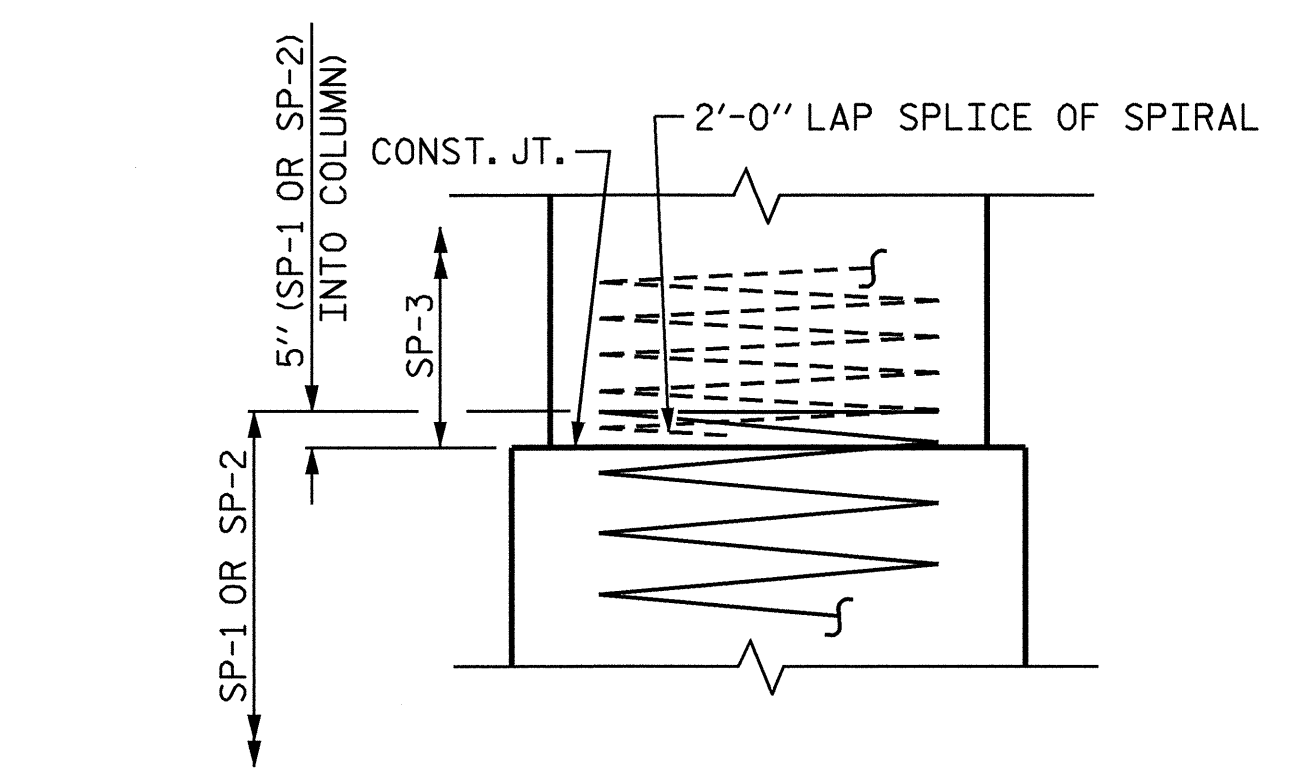
SECTION A-A



END ELEVATION



ALL BAR DIMENSIONS ARE OUT TO OUT.



CONSTRUCTION JOINT DETAIL

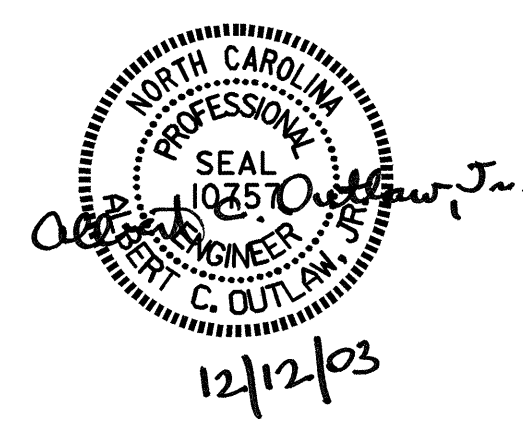
BILL OF MATERIAL					
BENT No. 2					
BAR NO.	NO.	SIZE	TYPE	LENGTH	WEIGHT
B1	6	#11	1	42'-6"	1355
B2	6	#11	STR	39'-6"	1259
B3	6	#5	STR	39'-6"	247
B4	6	#4	STR	3'-0"	12
M1	12	#11	STR	27'-11"	1780
M2	12	#11	STR	31'-11"	2035
S1	44	#5	3	13'-0"	597
U1	35	#4	4	7'-10"	183
U2	8	#4	4	8'-0"	43
U3	8	#4	4	7'-10"	42
V1	24	#11	2	19'-7"	2497
REINFORCING STEEL				10,050 LBS.	
SP-1	1	*	5	431'-0"	450
SP-2	1	*	6	528'-11"	552
SP-3	2	**	7	648'-2"	866
SPIRAL COLUMN REINFORCING STEEL				1,868 LBS.	
* THE SP-1 AND SP-2 SPIRAL REINFORCING STEEL SHALL BE W31 OR D-31 COLD DRAWN WIRE OR #5 PLAIN OR DEFORMED BAR.					
** THE SP-3 SPIRAL REINFORCING STEEL SHALL BE W20 OR D-20 COLD DRAWN WIRE OR #4 PLAIN OR DEFORMED BAR.					
CLASS A CONCRETE (C.Y.)					
POUR #2 (COLUMNS)				= 11.2	
POUR #3 (CAP)				= 28.3	
TOTAL				= 39.5	
DRILLED PIERS:					
DRILLED PIER CONCRETE (C.Y.)					
POUR #1 (DRILLED PIERS)				= 18.6	
4'-0" Ø DRILLED PIER IN SOIL				= 26.0 LIN. FT.	
4'-0" Ø DRILLED PIER NOT IN SOIL				= 14.0 LIN. FT.	
PERMANENT STEEL CASING FOR 4'-0" Ø DRILLED PIER				= 24.0 LIN. FT.	
CSL TUBES				= 180.0 LIN. FT.	

PROJECT NO. B-3623
CABARRUS COUNTY
 STATION: 18+37.50 -L-

SHEET 2 OF 2

STATE OF NORTH CAROLINA
 DEPARTMENT OF TRANSPORTATION
 RALEIGH

SUBSTRUCTURE
 BENT No. 2



DRAWN BY: P.C. BREWER DATE: 11/14/03
 CHECKED BY: C.H. SIMPSON DATE: 11/17/03

REVISIONS						SHEET NO.	
NO.	BY:	DATE:	NO.	BY:	DATE:	S-28	
1			3			TOTAL SHEETS	
2			4			34	