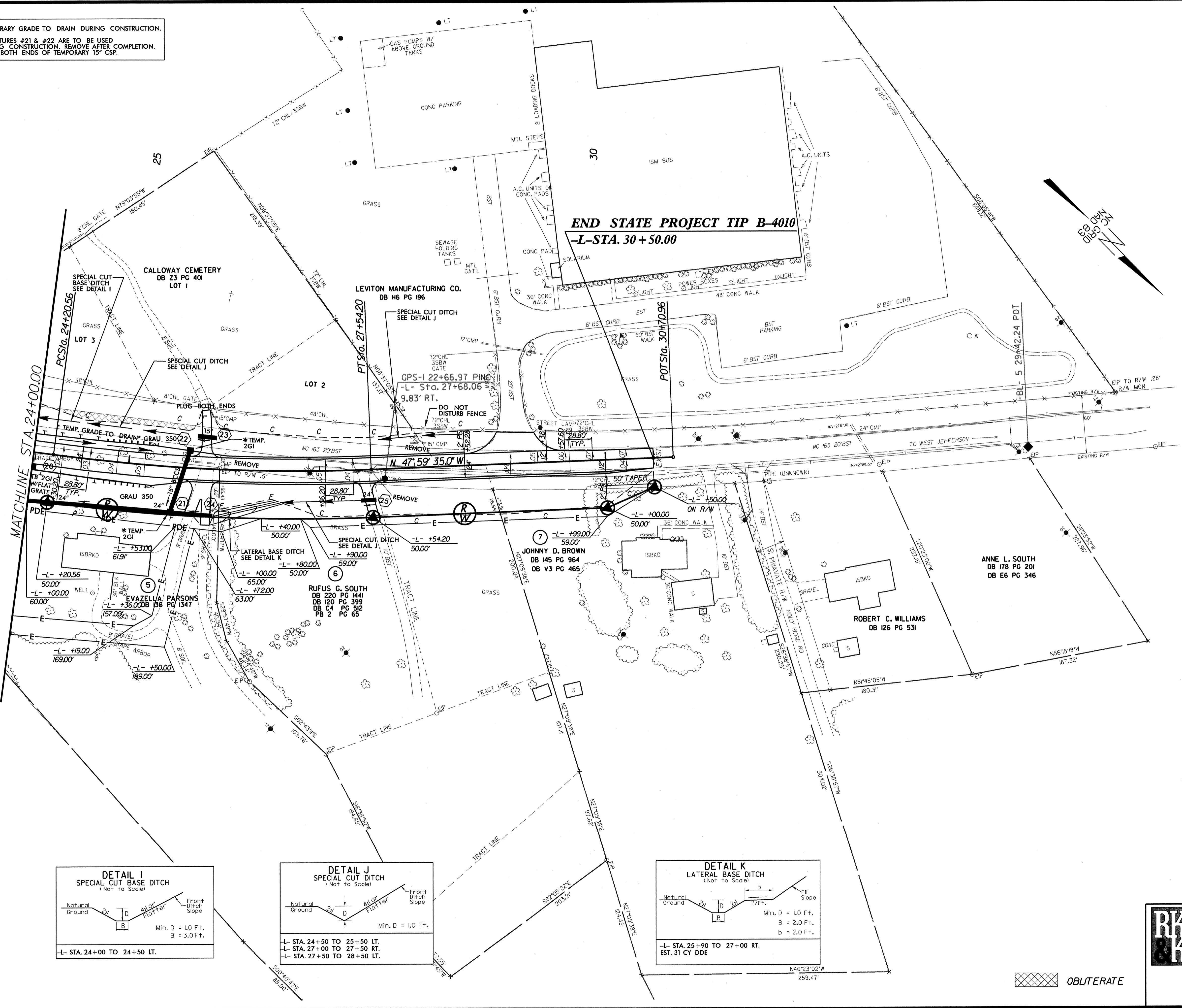


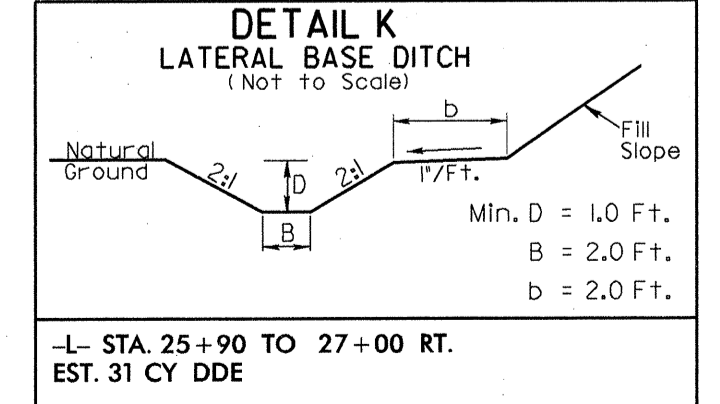
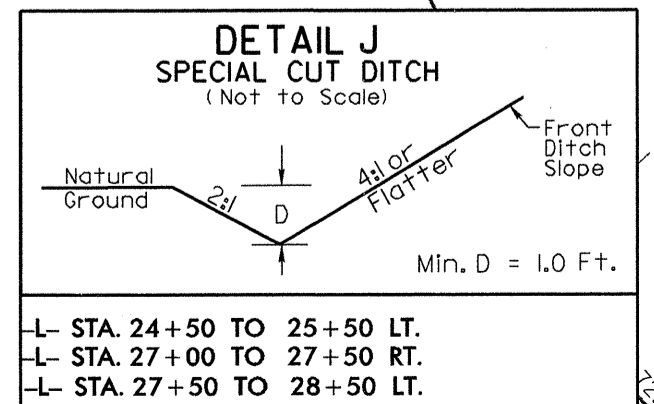
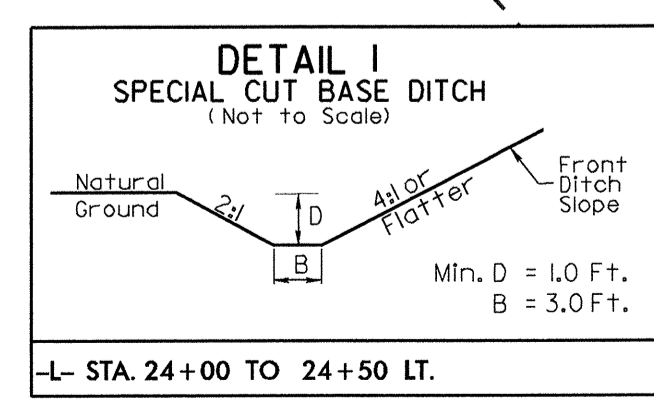
\* TEMPORARY GRADE TO DRAIN DURING CONSTRUCTION.  
\* STRUCTURES #21 & #22 ARE TO BE USED DURING CONSTRUCTION. REMOVE AFTER COMPLETION. PLUG BOTH ENDS OF TEMPORARY 15" CSP.

E:\17\02  
06/21/2004  
R:\Roadway\Proj\B4010\rdy\_PSH.shx\05.dgn



**END STATE PROJECT TIP B-4010**  
**-L- STA. 30+50.00**

-L-  
PI Sta 25+87.81  
 $\Delta = 10'00'' 33.0' (LT)$   
 $D = 3'00'' 00.0'$   
 $L = 333.64'$   
 $T = 167.24'$   
 $R = 1,909.86'$   
 $Se = .05$   
 $R.O. = 144'$



OBLITERATE

SEE SHEET 6 FOR -L- PROFILE

**RK&K**  
**PLANS PREPARED BY :**  
**RUMMEL KLEPPER & KAHL, LLP**  
consulting engineers  
5800 FARINGDON PLACE SUITE 105  
RALEIGH, NORTH CAROLINA 27609-3960  
FOR  
**STATE OF NORTH CAROLINA**  
**DIVISION OF HIGHWAYS**