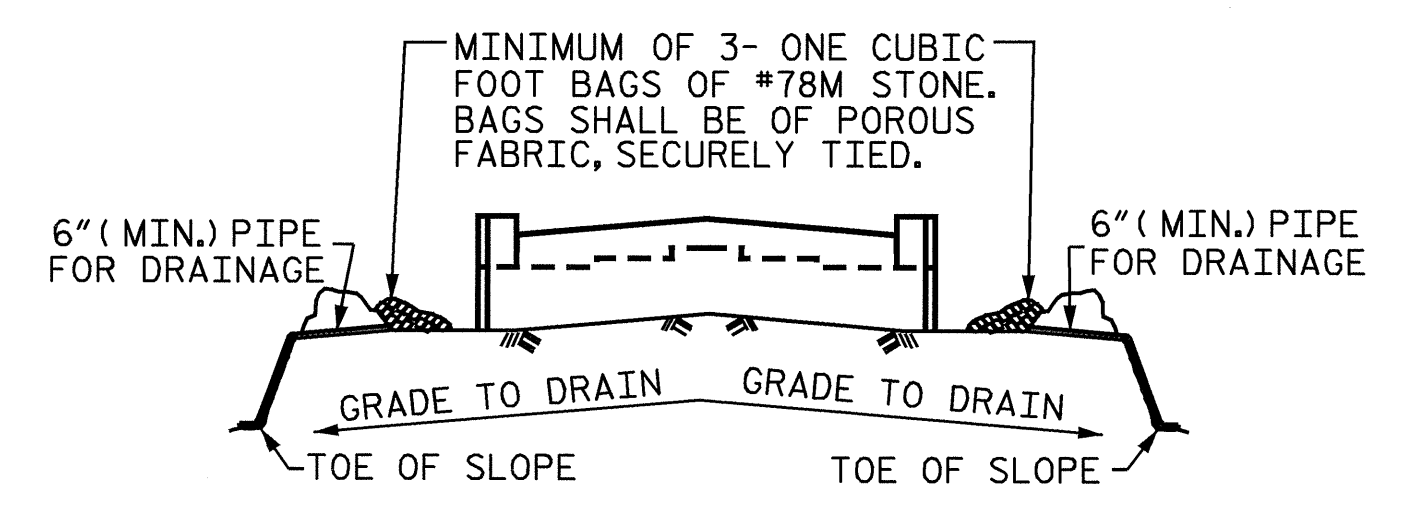


BAR TYPES

BILL OF MATERIAL

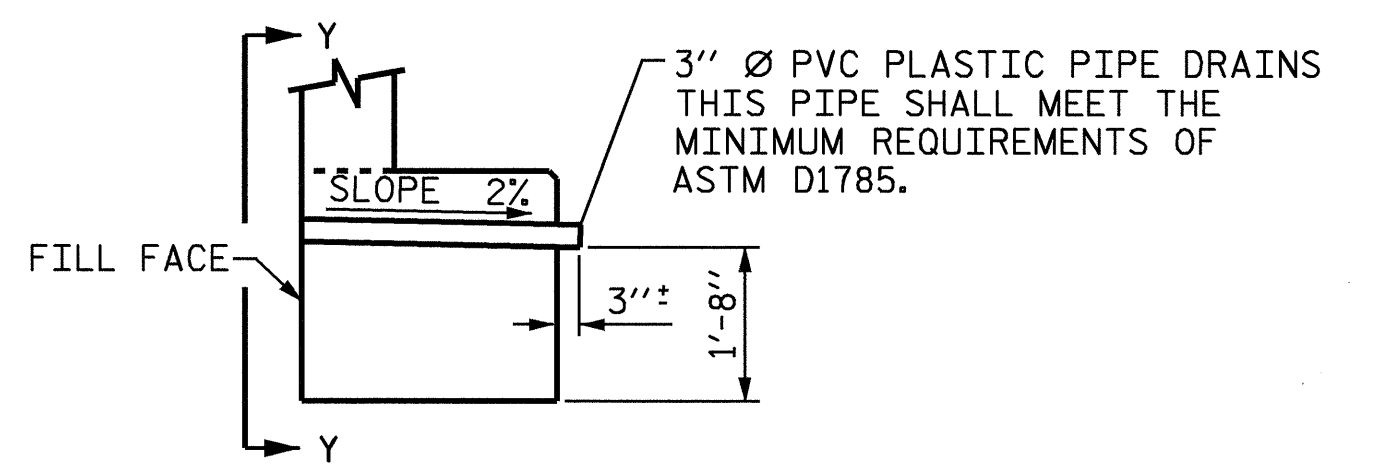


BAGGED STONE AND PIPE SHALL BE PLACED IMMEDIATELY AFTER COMPLETION OF END BENT EXCAVATION. PIPE MAY BE EITHER CONCRETE, CORRUGATED STEEL, CORRUGATED ALUMINUM ALLOY, OR CORRUGATED PLASTIC. PERFORATED PIPE WILL NOT BE ALLOWED.

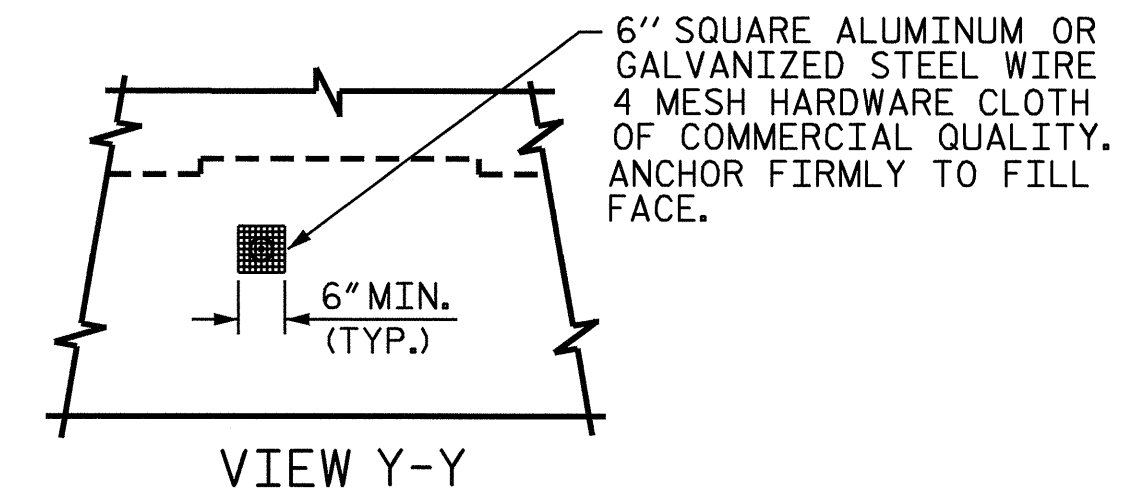
BAGGED STONE SHALL REMAIN IN PLACE UNTIL THE ENGINEER DIRECTS THAT IT BE REMOVED. THE CONTRACTOR SHALL REMOVE AND DISPOSE OF SILT ACCUMULATIONS AT BAGGED STONE WHEN SO DIRECTED BY THE ENGINEER. BAGS SHALL BE REMOVED AND REPLACED WHENEVER THE ENGINEER DETERMINES THAT THEY HAVE DETERIORATED AND LOST THEIR EFFECTIVENESS.

NO SEPARATE PAYMENT WILL BE MADE FOR THIS WORK AND THE ENTIRE COST OF THIS WORK SHALL BE INCLUDED IN THE UNIT CONTRACT PRICE BID FOR THE SEVERAL PAY ITEMS.

TEMPORARY DRAINAGE AT END BENT

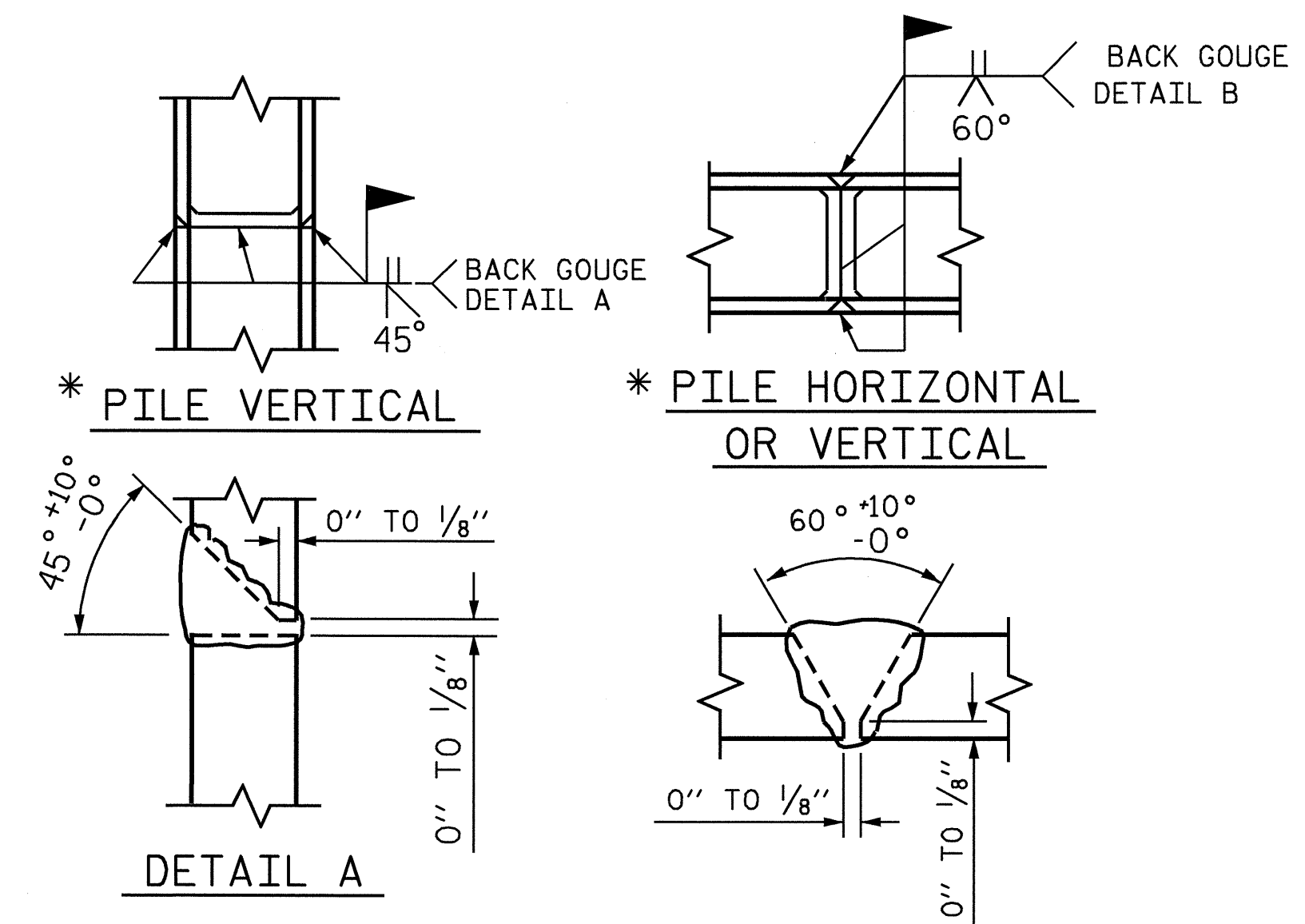


SECTION THRU CAP



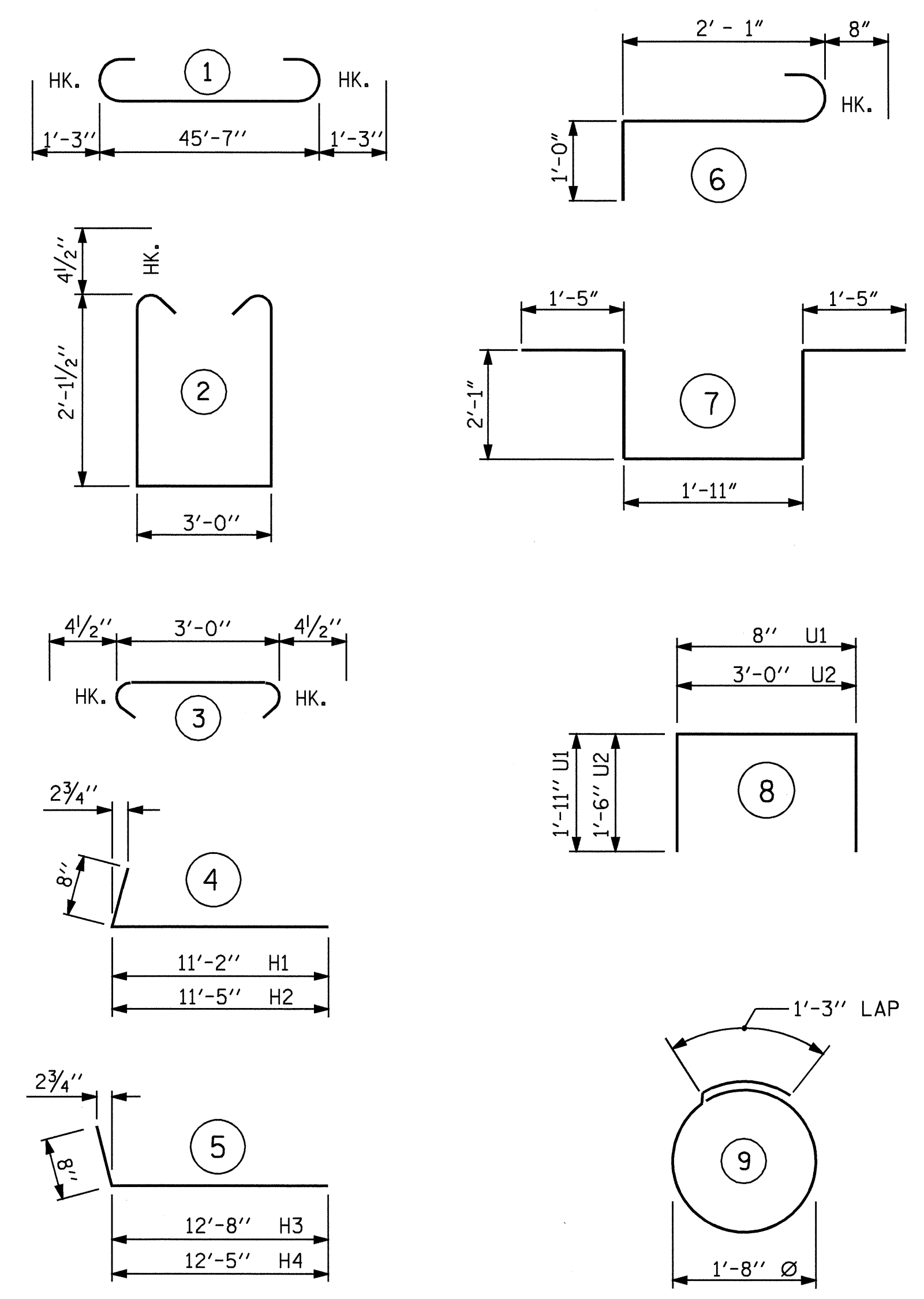
NOTE: NO SEPARATE PAYMENT WILL BE MADE FOR FURNISHING AND INSTALLING THE PVC PLASTIC PIPE DRAINS, HARDWARE CLOTH AND FASTENERS. THE ENTIRE COST OF THIS WORK SHALL BE INCLUDED IN THE UNIT CONTRACT PRICE BID FOR THE SEVERAL PAY ITEMS.

PIPE DRAIN DETAILS



\* POSITION OF PILE DURING WELDING.

PILE SPLICE DETAILS



ALL BAR DIMENSIONS ARE OUT TO OUT.

END BENT #2					
BAR	NO.	SIZE	TYPE	LENGTH	WEIGHT
B1	8	#10	1	48'-1"	1655
B2	2	#5	STR	45'-8"	95
B3	8	#4	STR	23'-11"	128
B4	10	#4	STR	3'-0"	20
B5	10	#4	STR	2'-6"	17
H1	11	#5	4	11'-10"	136
H2	11	#5	4	12'-1"	139
H3	11	#5	5	13'-4"	153
H4	11	#5	5	13'-1"	150
K1	24	#4	STR	23'-11"	383
K2	8	#4	STR	2'-9"	15
S1	37	#5	3	3'-9"	145
S2	37	#5	2	8'-0"	309
S3	16	#4	9	6'-6"	69
S4	3	#6	6	3'-9"	17
S5	1	#6	7	8'-11"	13
U1	40	#4	8	4'-6"	120
U2	12	#4	8	6'-0"	48
V1	80	#5	STR	7'-7"	633
V2	32	#5	STR	8'-10"	295
V3	34	#5	STR	8'-8"	307

REINFORCING STEEL = 4847 LBS

CLASS A CONCRETE BREAKDOWN

POUR #1: CAP & LOWER WINGS & BRACE PILE BLOCKS 18.2 CU. YDS.

POUR #2: BACKWALL & UPPER WINGS 16.4 CU. YDS.

TOTAL CLASS A CONCRETE 34.6 CU. YDS.

HP 12 X 53 STEEL PILES NO. 10 300 FT.

STEEL PILE POINTS NO. 10 EACH

PROJECT NO. B-4010  
 ASHE COUNTY  
 STATION: 20+93.60 -L-

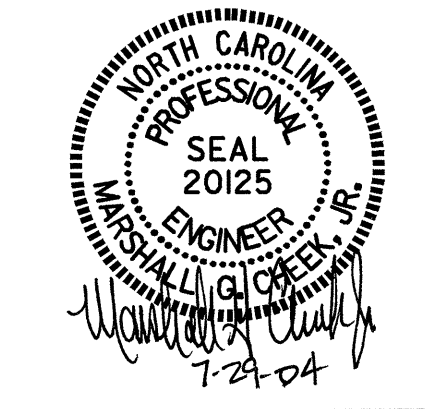
SHEET 3 OF 3

STATE OF NORTH CAROLINA  
 DEPARTMENT OF TRANSPORTATION  
 RALEIGH

SUBSTRUCTURE  
 END BENT #2

REVISIONS					SHEET NO.
NO.	BY:	DATE:	NO.	BY:	DATE:
1			3		
2			4		

TOTAL SHEETS 37



DRAWN BY: QT NGUYEN DATE: 4-04  
 CHECKED BY: L.L. MURPHY DATE: 4-04