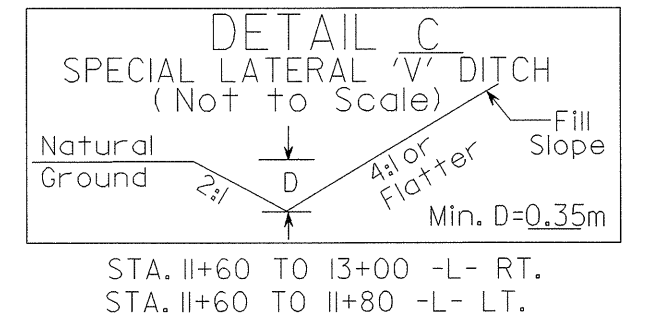
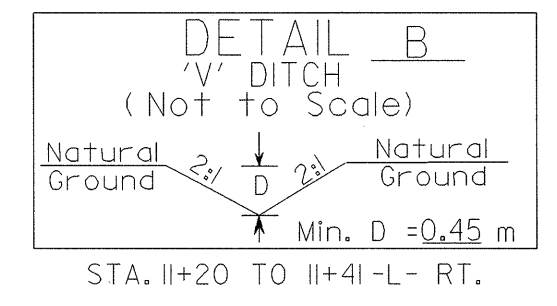
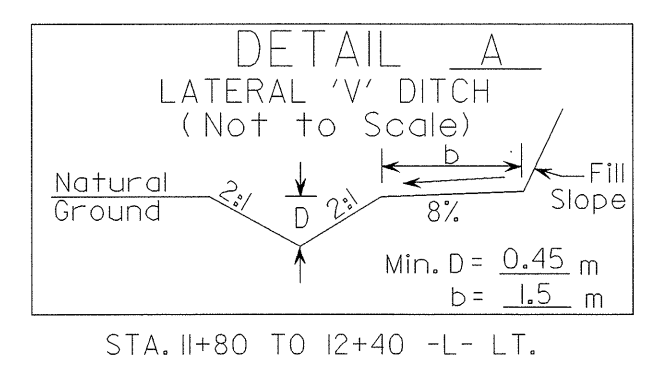


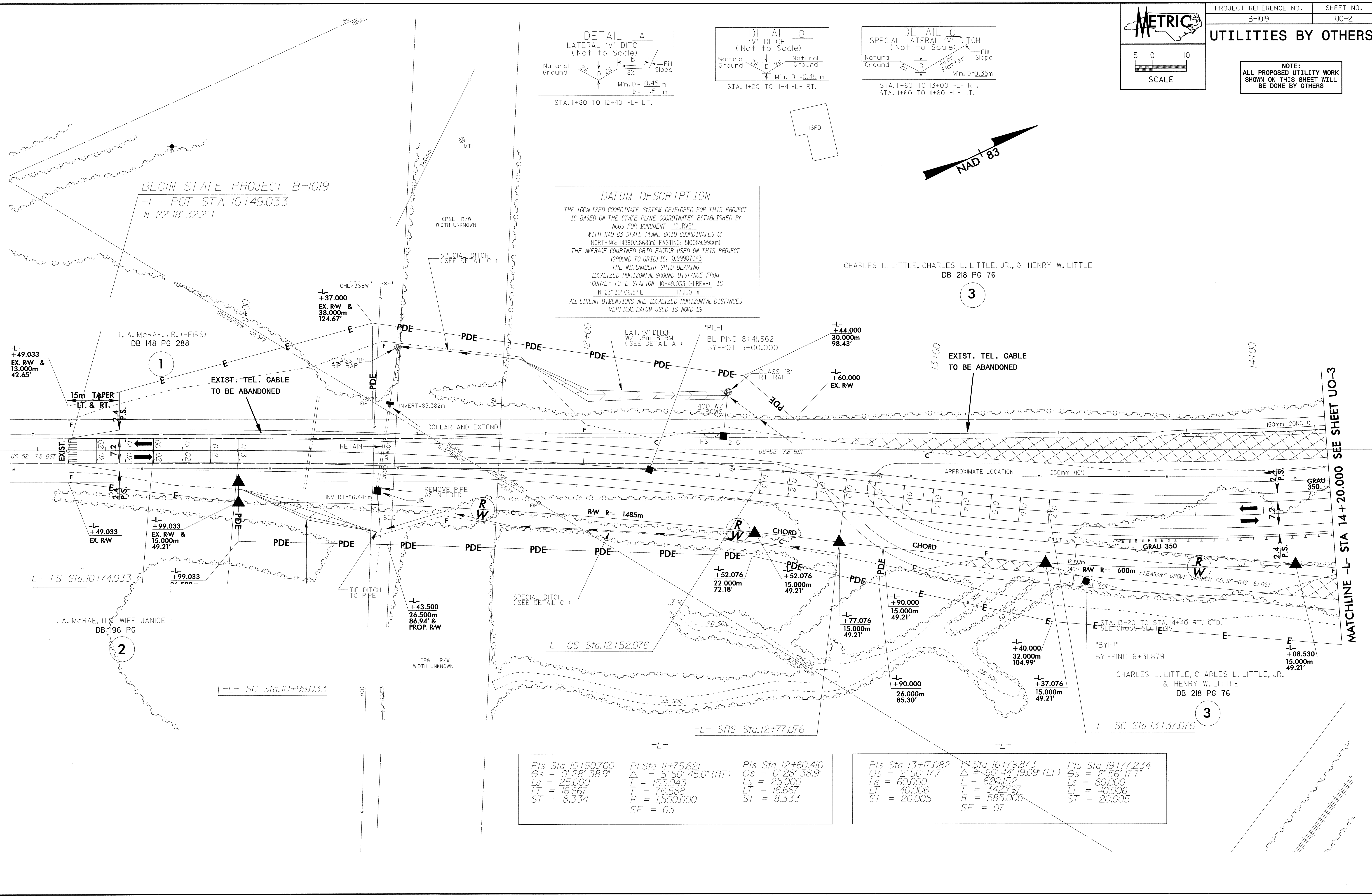
UTILITIES BY OTHERS

NOTE:
ALL PROPOSED UTILITY WORK
SHOWN ON THIS SHEET WILL
BE DONE BY OTHERS



DATUM DESCRIPTION
THE LOCALIZED COORDINATE SYSTEM DEVELOPED FOR THIS PROJECT IS BASED ON THE STATE PLANE COORDINATES ESTABLISHED BY NCGS FOR MONUMENT "CURVE".
WITH NAD 83 STATE PLANE GRID COORDINATES OF
NORTHING: 143902.868(m) EASTING: 510089.998(m)
THE AVERAGE COMBINED GRID FACTOR USED ON THIS PROJECT (GROUND TO GRID) IS: 0.99981043
THE N.C. LAMBERT GRID BEARING
LOCALIZED HORIZONTAL GROUND DISTANCE FROM "CURVE" TO L- STATION 10+49.033 (-LREV-) IS
N 23° 20' 06.5" E 171.90 m
ALL LINEAR DIMENSIONS ARE LOCALIZED HORIZONTAL DISTANCES
VERTICAL DATUM USED IS NGVD 29

CHARLES L. LITTLE, CHARLES L. LITTLE, JR., & HENRY W. LITTLE
DB 218 PG 76



<p>Pls Sta 10+90.700 $\theta_s = 0^\circ 28' 38.9''$ $L_s = 25.000$ $LT = 16.667$ $ST = 8.334$</p>	<p>Pls Sta 11+75.621 $\Delta = 5^\circ 50' 45.0''$ (RT) $L = 153.043$ $T = 76.588$ $R = 1,500.000$ $SE = 03$</p>	<p>Pls Sta 12+60.410 $\theta_s = 0^\circ 28' 38.9''$ $L_s = 25.000$ $LT = 16.667$ $ST = 8.333$</p>
--	--	--

<p>Pls Sta 13+17.082 $\theta_s = 2^\circ 56' 17.7''$ $L_s = 60.000$ $LT = 40.006$ $ST = 20.005$</p>	<p>Pls Sta 16+79.873 $\Delta = 60^\circ 44' 19.09''$ (LT) $L = 629.152$ $T = 342.797$ $R = 585.000$ $SE = 07$</p>	<p>Pls Sta 19+77.234 $\theta_s = 2^\circ 56' 17.7''$ $L_s = 60.000$ $LT = 40.006$ $ST = 20.005$</p>
---	---	---

MATCHLINE -L- STA 14+20.000 SEE SHEET UO-3

0.02457
F:\N\1019\1019_ut_uo_02psh.dgn
14 JUN 2004 14:00
F:\N\1019\1019_ut_uo_02psh.dgn
14 JUN 2004 14:00
F:\N\1019\1019_ut_uo_02psh.dgn
14 JUN 2004 14:00