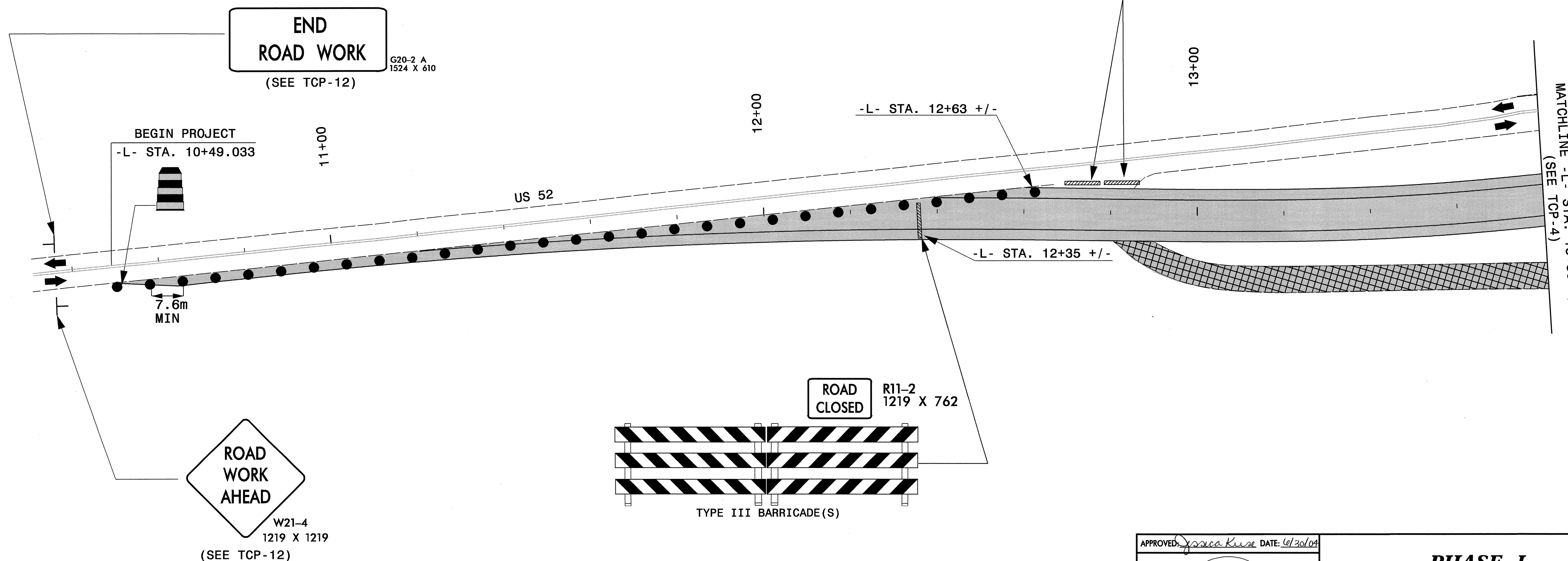
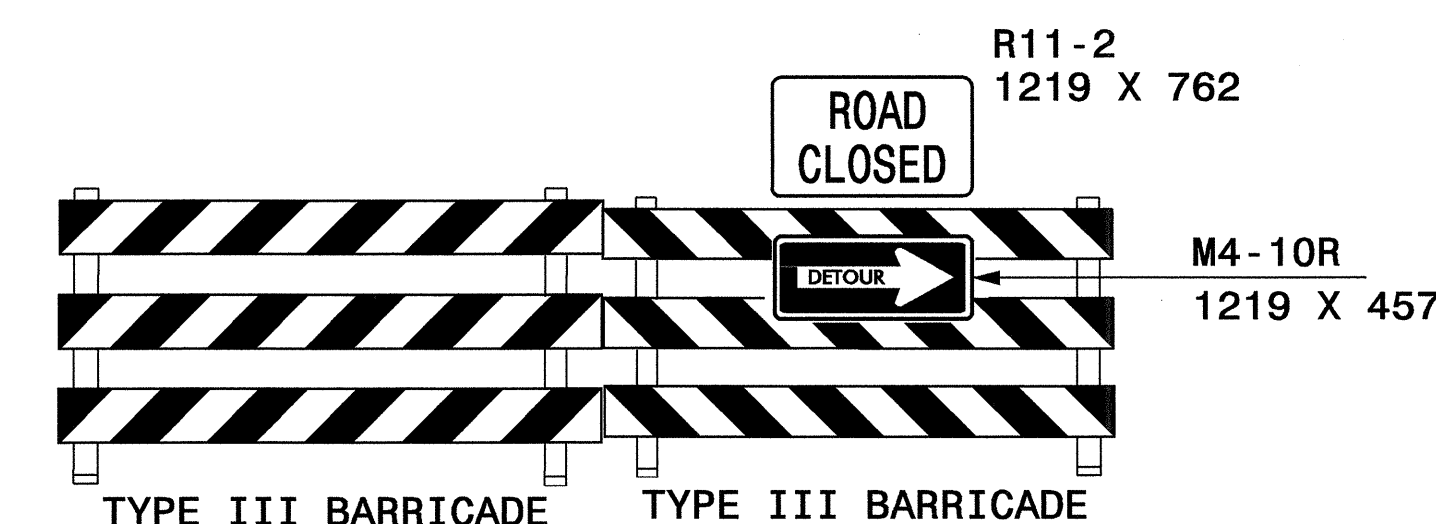
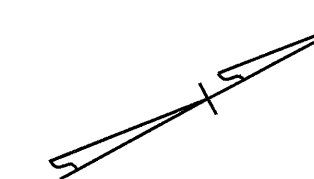




PROJ. REFERENCE NO.	SHEET NO.
B-1019	TCP-3

### PHASE I

- STEP 1: INSTALL ALL ADVANCE WARNING SIGNING ON US 52 AND SR 1649. IF WORK IS NOT PURSUED WITHIN THREE (3) DAYS OF SIGN INSTALLATION, THE SIGNS SHALL BE COVERED OR REMOVED IN A METHOD APPROVED BY THE ENGINEER ACCORDING TO SECTION 1110 AT NO EXPENSE TO THE DEPARTMENT. MAINTAIN ACCESS AT ALL TIMES TO ALL DRIVEWAYS WITHIN THE PROJECT LIMITS.
- STEP 2: INSTALL OFFSITE DETOUR SIGNING USING SIGNS AND DEVICES AS SHOWN (SEE TCP-9) AND CLOSE SR 1649 AT THE INTERSECTION OF US 52 AND AT THE INTERSECTION OF SR 1648 TO THRU TRAFFIC.
- STEP 3: PLACE PORTABLE CONCRETE BARRIER ALONG EAST EDGE OF EXISTING FROM -L- STA. 14+26 +/- TO -L- STA. 14+74 +/- AND -L- STA. 15+36 +/- TO -L- STA. 15+83 +/- AND PLACE TEMPORARY CRASH CUSHIONS AT -L- STA. 14+26 +/- AND -L- STA. 15+83 +/- . INSTALL TEMPORARY SHORING ON WEST SIDE OF PROPOSED FROM -L- STA. 14+40 +/- TO -L- STA. 14+80 +/- AND FROM -L- STA. 15+25 +/- TO -L- STA. 15+55 +/- (SEE TCP-4 AND LOCAL NOTE C).
- STEP 4: CONSTRUCT PROPOSED BRIDGE AND APPROACHES FROM -L- STA. 12+60 +/- TO -L- STA. 16+50 +/- AND PROPOSED SR 1649 CONNECTOR FROM -Y- STA. 13+00 +/- TO -Y- STA. 14+80 +/- UP TO BUT NOT INCLUDING FINAL LAYER OF SURFACE COURSE.
- CONSTRUCT PROPOSED -L- FROM STA. 10+49 +/- TO -L- STA. 12+60 +/- FROM THE EDGE AND ELEVATION OF EXISTING US 52, FROM -L- STA. 16+50 +/- TO -L- STA. 18+00 +/- FOR A MINIMUM WIDTH OF TEN (10) METERS AND FROM -L- STA. 18+00 +/- TO -L- STA. 19+80 +/- FOR A VARIABLE WIDTH UP TO BUT NOT INCLUDING FINAL LAYER OF SURFACE COURSE (SEE TYPICALS ON TCP-5).
- STEP 5: INSTALL PERMANENT GUARDRAIL ON NORTHBOUND -L- FROM -L- STA. 14+55 +/- TO -L- STA. 19+38 +/-, SOUTHBOUND -L- FROM -L- STA. 14+20 +/- TO -L- STA. 15+85 +/-, AND -Y- FROM -Y- STA. 13+00 +/- TO -Y- STA. 14+58 +/- (SEE TCP-6, TCP-7 AND TCP-8).



30-JUN-2004 10:35  
 H:\TCPA\B019\TC-1\CP03.dgn  
 mmarley AT TEL08864T

APPROVED: <i>Jessica Kuse</i> DATE: 01/30/04		<b>PHASE I</b>								
	SCALE: NONE									
	DATE: 01/2004									
	DWG. BY: MLM									
	DESIGN BY: MLM									
REVIEWED BY: JDK	<table border="1"> <thead> <tr> <th colspan="2">REVISIONS</th> </tr> </thead> <tbody> <tr> <td> </td> <td> </td> </tr> <tr> <td> </td> <td> </td> </tr> <tr> <td> </td> <td> </td> </tr> </tbody> </table>		REVISIONS							
REVISIONS										