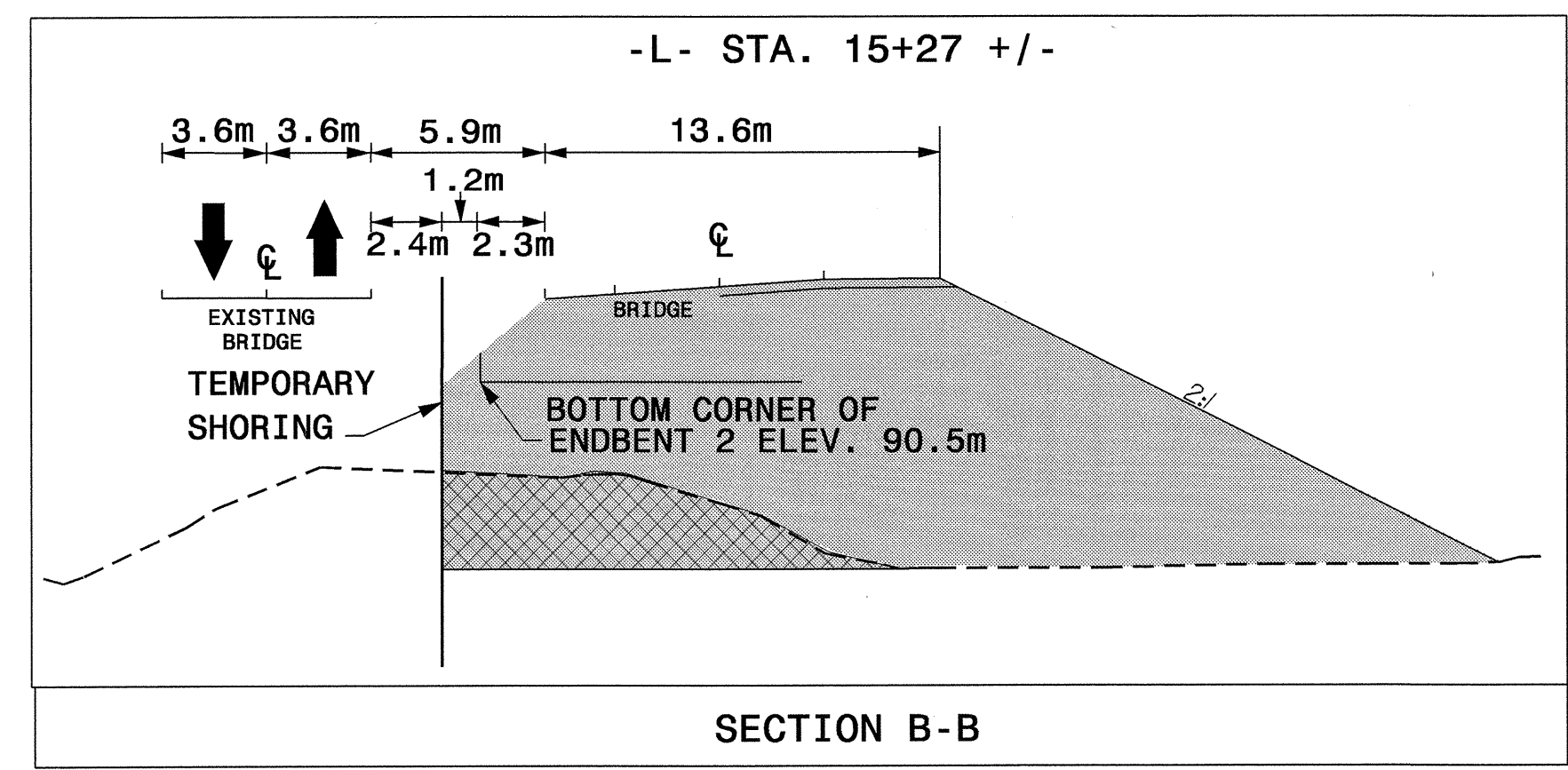
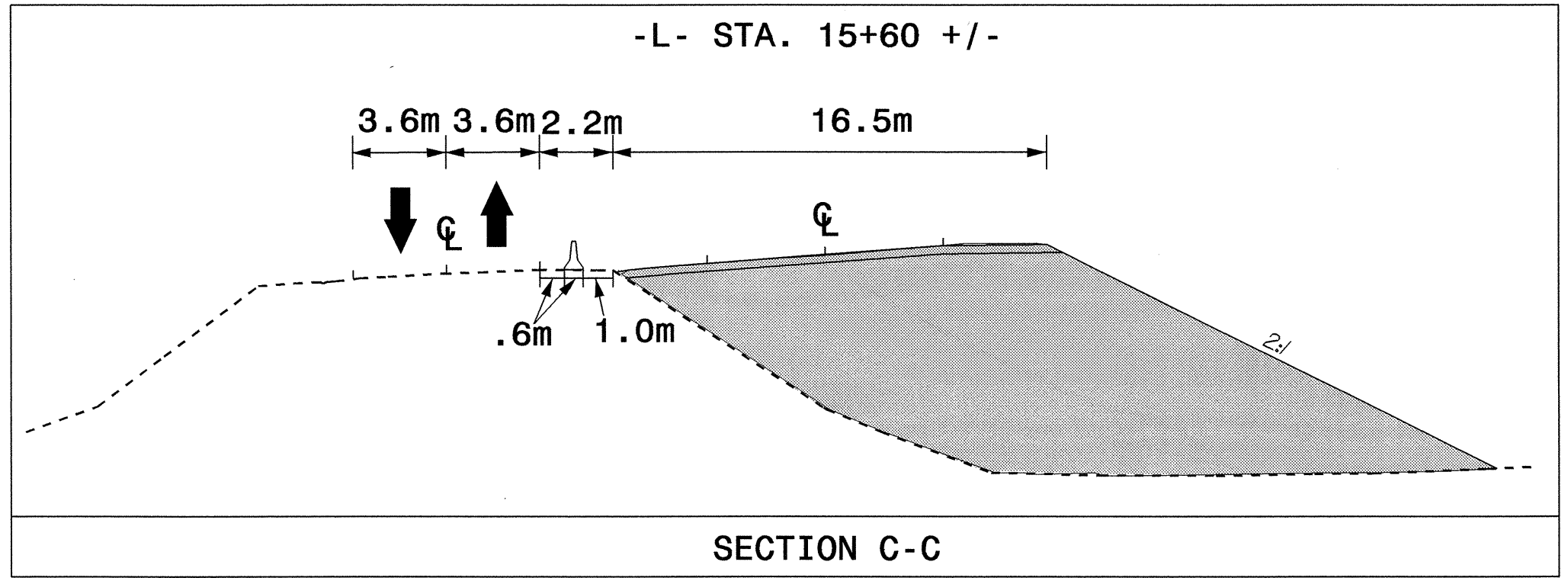
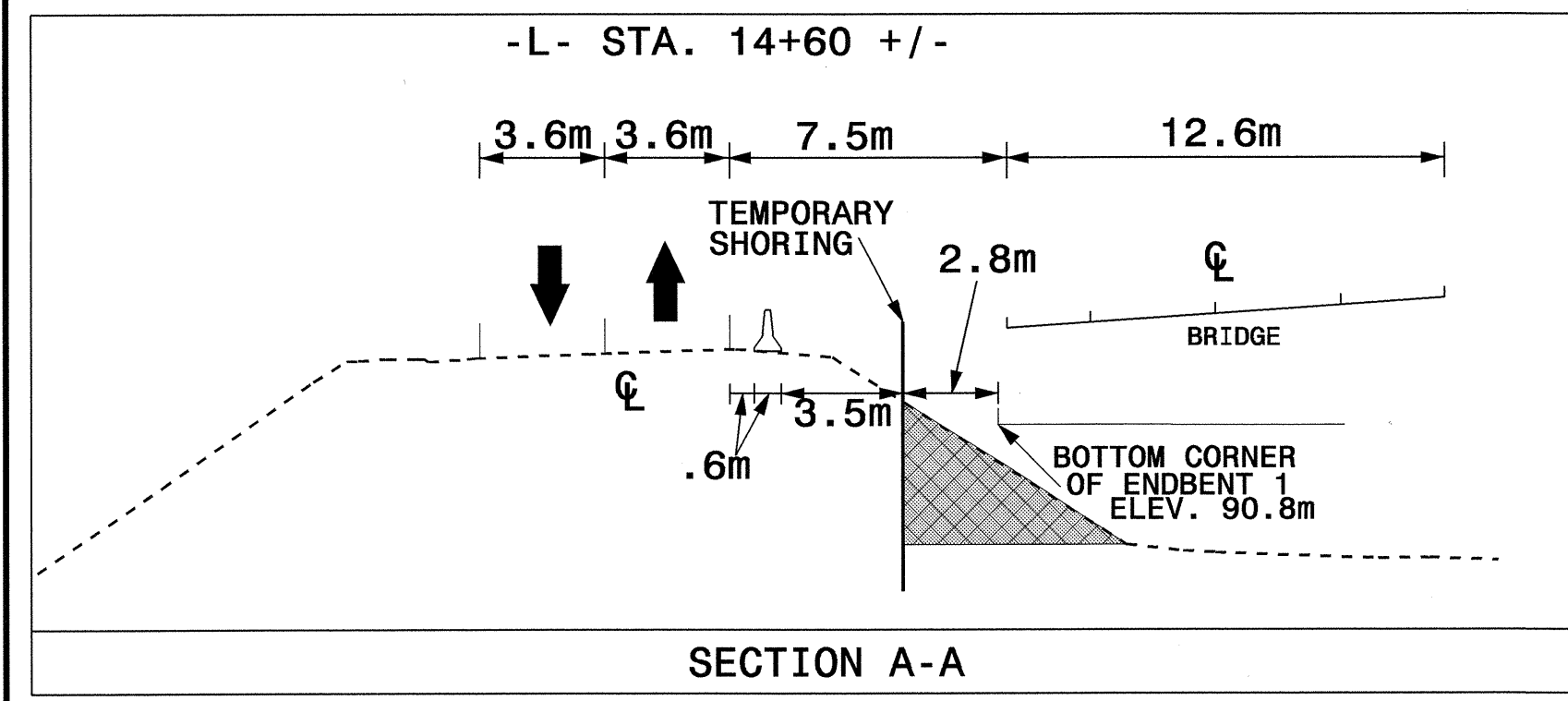
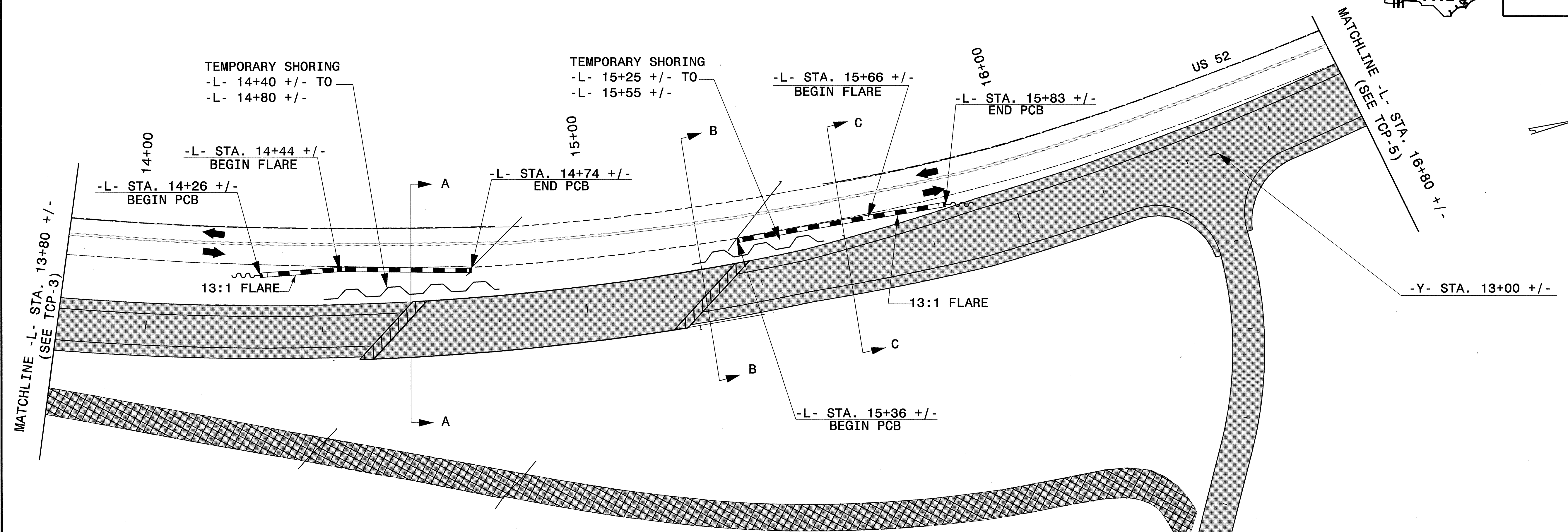




PROJ. REFERENCE NO.	SHEET NO.
B-1019	TCP-4



SHORING NOTES AND SOIL PARAMETERS

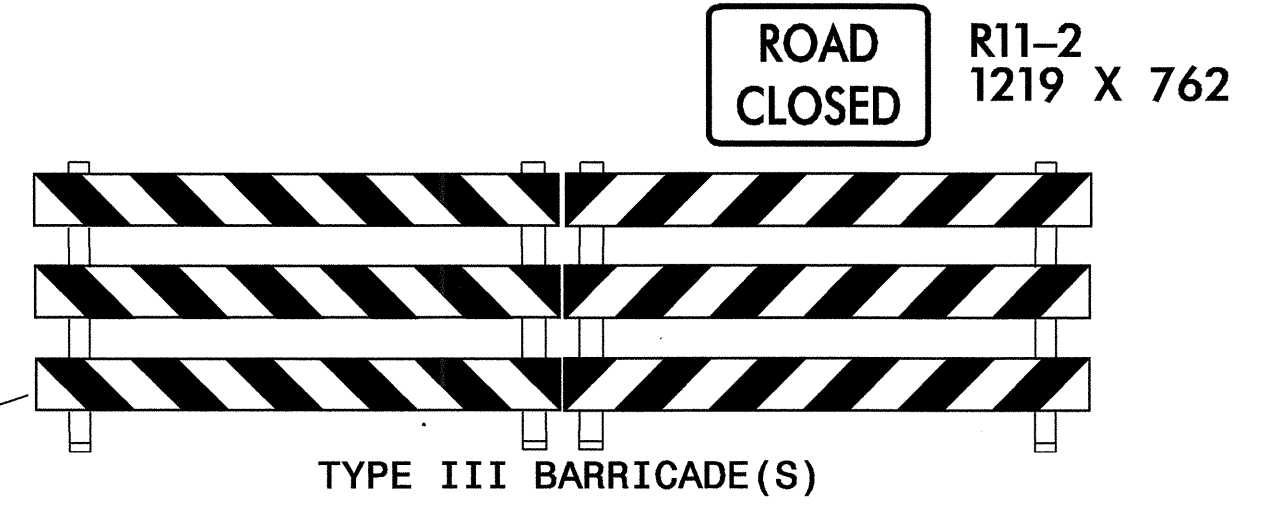
A. DO NOT USE STANDARD SHORING DESIGN FROM STA. 14+40 +/- TO STA. 14+80 +/- -L- AND FROM STA. 15+25 +/- TO STA. 15+55 +/- -L-. CONTRACTOR IS RESPONSIBLE FOR SUBMITTING SHORING DESIGN.

B. FOR DESIGN OF TEMPORARY SHORING, USE THE FOLLOWING SOIL PARAMETERS FOR SOILS ABOVE THE ROCK:

UNIT WEIGHT OF SOIL ABOVE WATER TABLE, $\gamma = 120\text{pcf}$
 UNIT WEIGHT OF SOIL BELOW WATER TABLE, $\gamma' = 60\text{pcf}$
 FRICTION ANGLE, $\phi = 30^\circ$
 COHESION, $c = 0\text{psf}$

C. SHORING EMBEDMENT WILL BE DIFFICULT TO OBTAIN DUE TO THE PRESENCE OF HARD CLAY AND ROCK. ROCK WAS IDENTIFIED AT APPROXIMATELY ELEVATION 81m +/- AT END BENT NO. 1 AND 80.5m +/- AT END BENT NO. 2.

D. GROUNDWATER WAS NOTED AT APPROXIMATELY ELEVATION 86m +/- AT END BENT NO. 1 AND 84m +/- AT END BENT NO. 2.



APPROVED: *Jessica Kuse* DATE: 4/30/04

SEAL

PROFESSIONAL ENGINEER
 JESSICA D. KUSE
 027811

PHASE I

SCALE:	NONE		<table border="1"> <tr><th colspan="2">REVISIONS</th></tr> <tr><td> </td><td> </td></tr> <tr><td> </td><td> </td></tr> <tr><td> </td><td> </td></tr> </table>	REVISIONS							
REVISIONS											
DATE:	01/2004										
DWG. BY:	MLM										
DESIGN BY:	MLM										
REVIEWED BY:	JDK	CADD FILE									

30-JUN-2004 10:35
 R:\TCP\B0109\AT\TCP08647
 mmlm@metricon.com