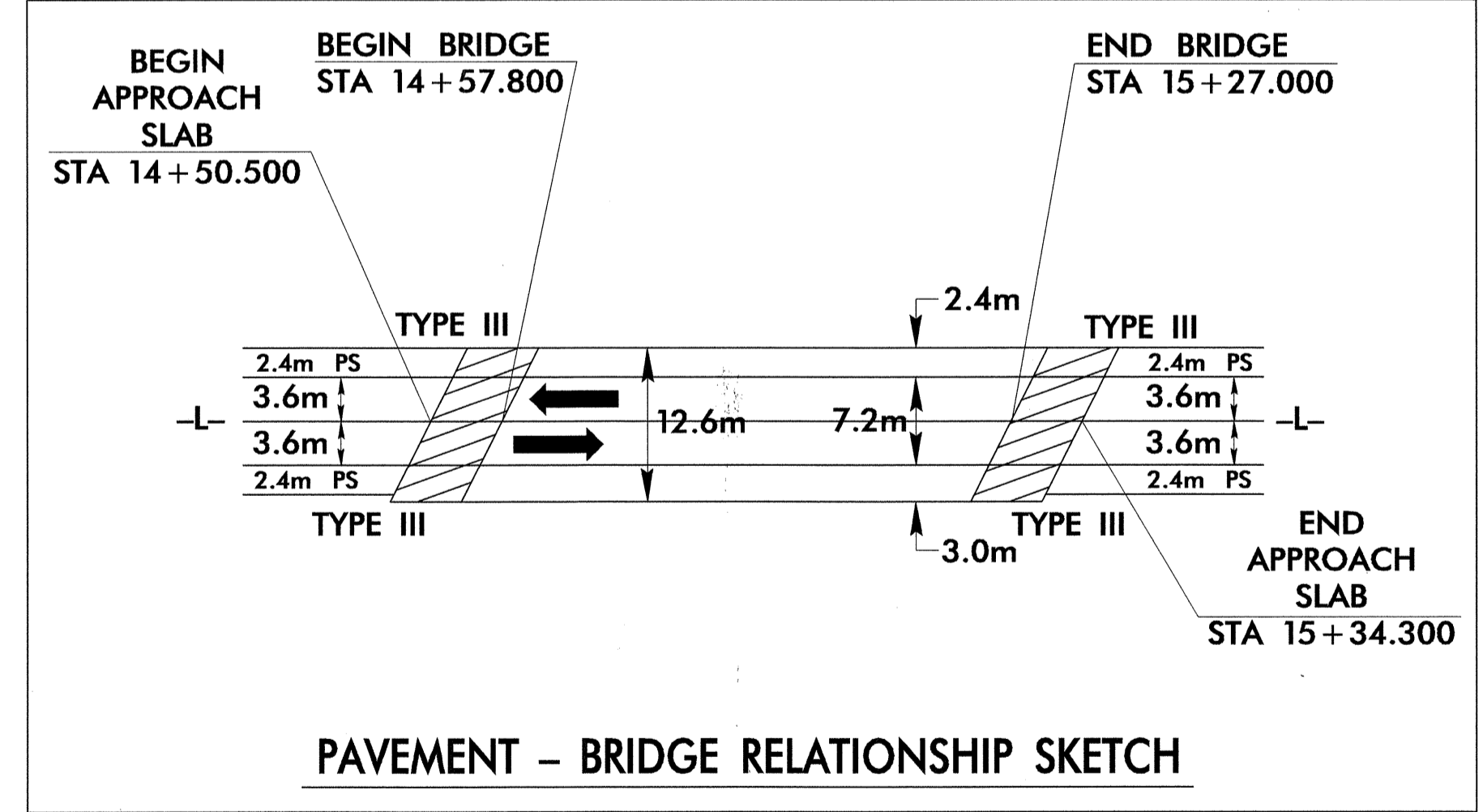
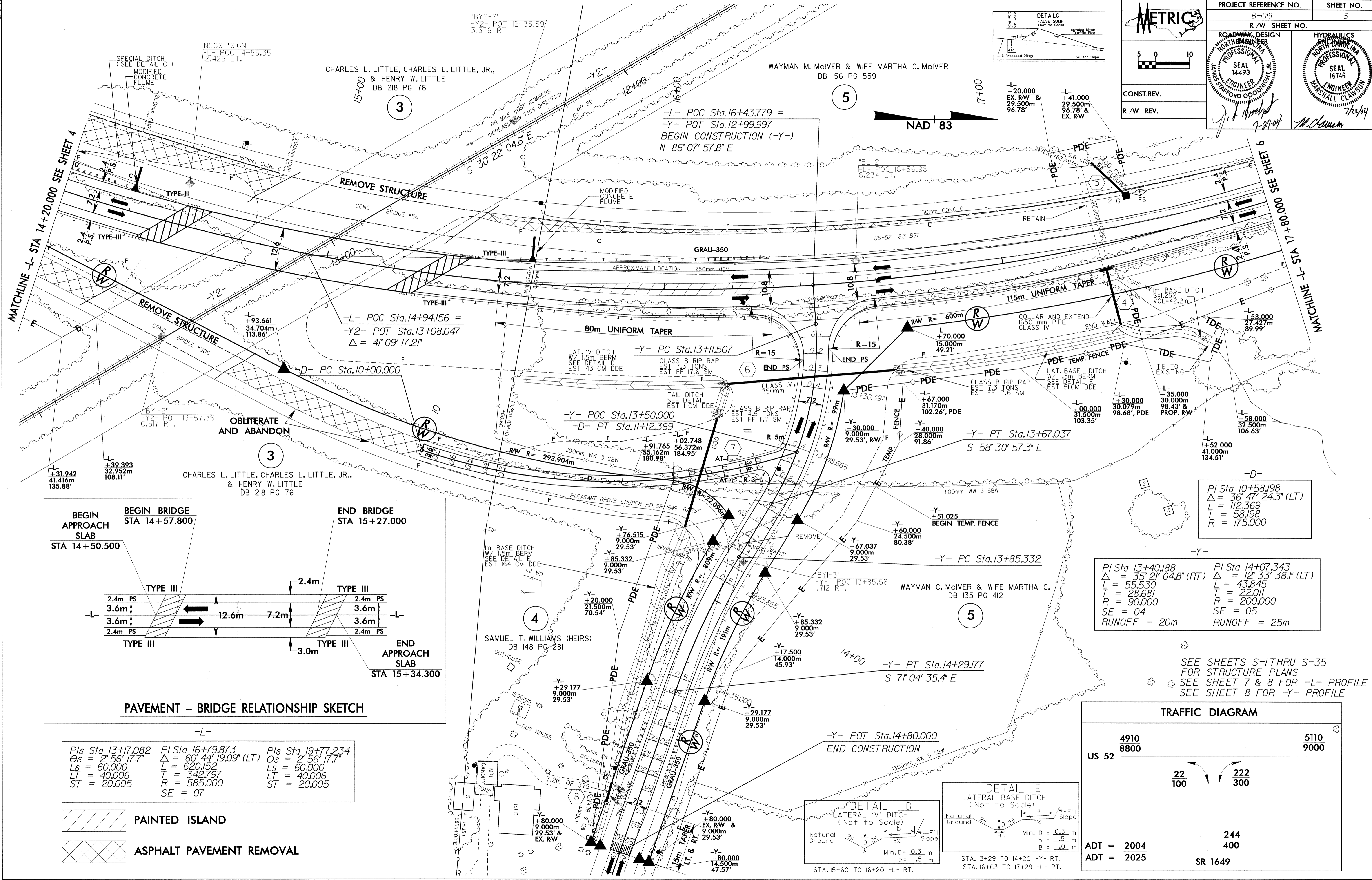
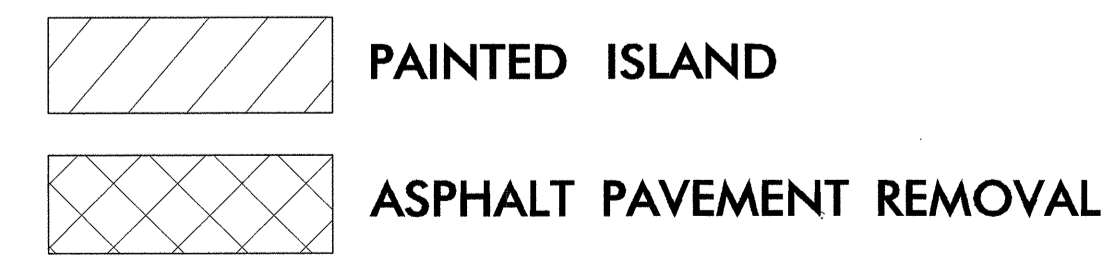


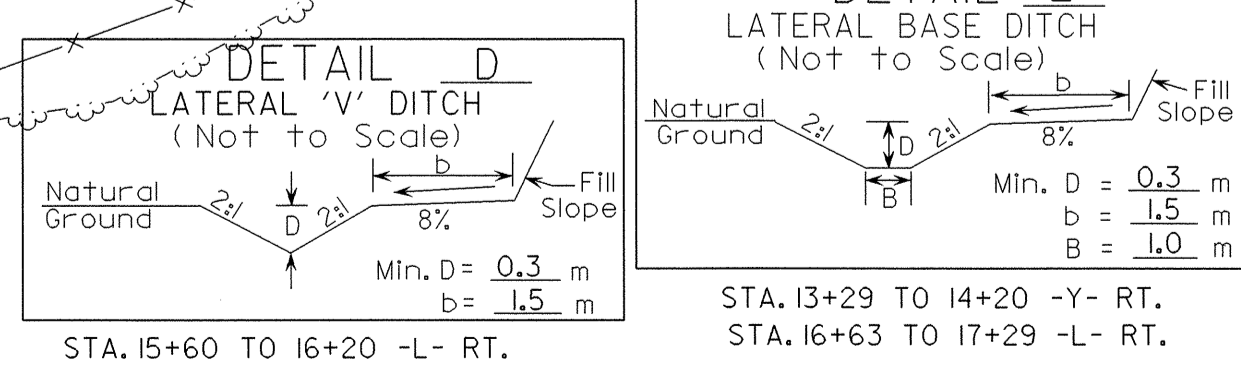
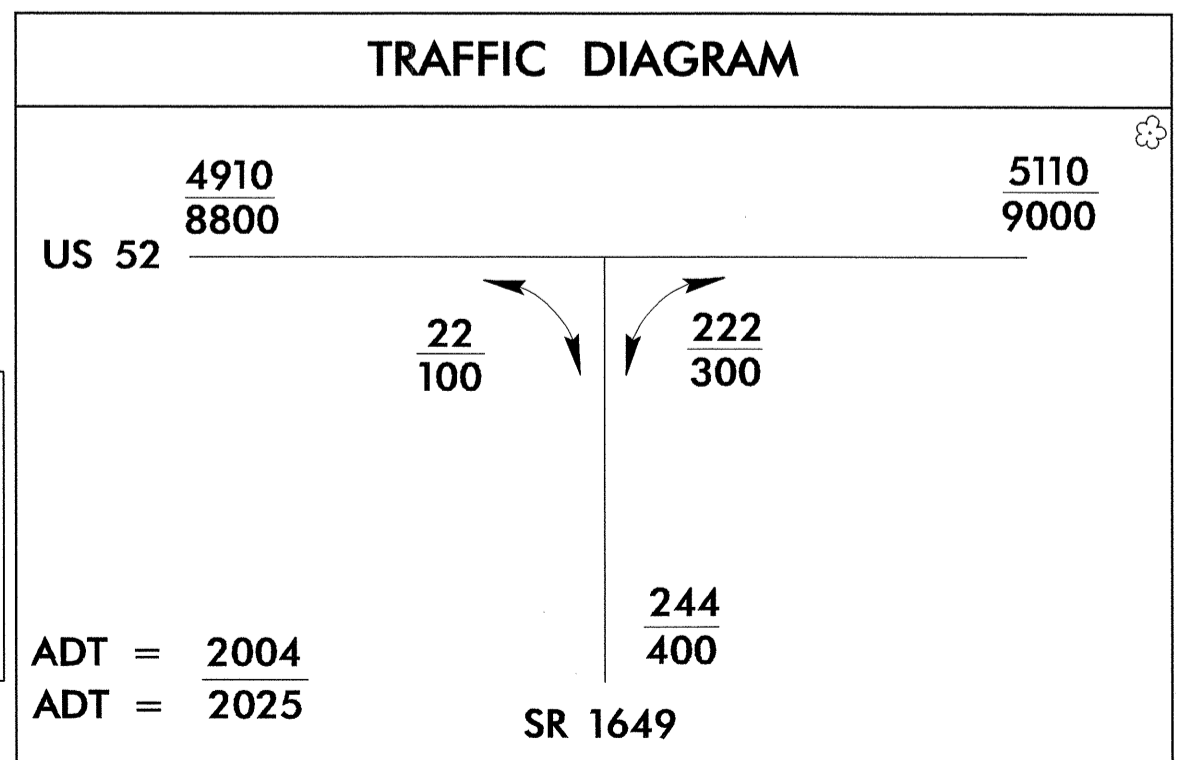
PROJECT REFERENCE NO. B-1019 SHEET NO. 5
 R / W SHEET NO.
 ROADWAY DESIGN
 NORTH CAROLINA PROFESSIONAL ENGINEER
 SEAL 14493
 JAMES STAFFORD GOODENOUGH JR.
 7/22/04
 HYDRAULICS
 NORTH CAROLINA PROFESSIONAL ENGINEER
 SEAL 16746
 MARSHALL CLAWSON
 7/24/04



Pls Sta 13+17.082 Os = 2° 56' 17.7" Ls = 60.000 LT = 40.006 ST = 20.005	Pls Sta 16+79.873 Δ = 60° 44' 19.09" (LT) L = 620.152 T = 342.797 R = 585.000 SE = 07	Pls Sta 19+77.234 Os = 2° 56' 17.7" Ls = 60.000 LT = 40.006 ST = 20.005
---	--	---



PI Sta 13+40.188 Δ = 35° 21' 04.8" (RT) L = 55.530 T = 28.681 R = 90.000 SE = 04 RUNOFF = 20m	PI Sta 14+07.343 Δ = 12° 33' 38.1" (LT) L = 43.845 T = 22.011 R = 200.000 SE = 05 RUNOFF = 25m
---	--



SEE SHEETS S-1 THRU S-35 FOR STRUCTURE PLANS
 SEE SHEET 7 & 8 FOR -L- PROFILE
 SEE SHEET 8 FOR -Y- PROFILE

21-JUL-2004 07:35 D:\Eason\RD214494\RD214494.dwg AT RD214494