

2/13/06  
20-JUL-2004 10:22  
AT RD214494.dwg  
DKEason

BM # 1 NCGS MONUMENT  
"CURVE" -BL- STA. 5+00.000  
N 143,902.868 E 510,089.998  
EL. 88.262

BM # U-50 NCGS BENCH MARK "U 50 1933"  
S 53°53'47"E 695.5m FROM NCGS "CURVE"  
N 143,493.00 E 510,651.900  
EL. 88.501

BEGIN GRADE -L-  
STA 10+49.033  
ELEV. 90.925 m

PIPE HYDRAULIC DATA  
DRAINAGE STRUCTURE NO. 1  
DRAINAGE AREA = 1.62 HA  
DESIGN FREQUENCY = 0.50 YRS  
DESIGN DISCHARGE = 0.32 CMS  
DESIGN HW ELEVATION = 87.17 M  
100 YEAR DISCHARGE = 0.36 CMS  
100 YEAR HW ELEVATION = 87.2 M  
OVERTOPPING FREQUENCY = 0.500+YRS  
OVERTOPPING DISCHARGE = 1.0 CMS  
OVERTOPPING ELEVATION = 88.3 M

PI = 11+65.000  
EL = 91.620 m  
VC = 60 m  
K = 97

PROJECT REFERENCE NO. B-1019 SHEET NO. 7

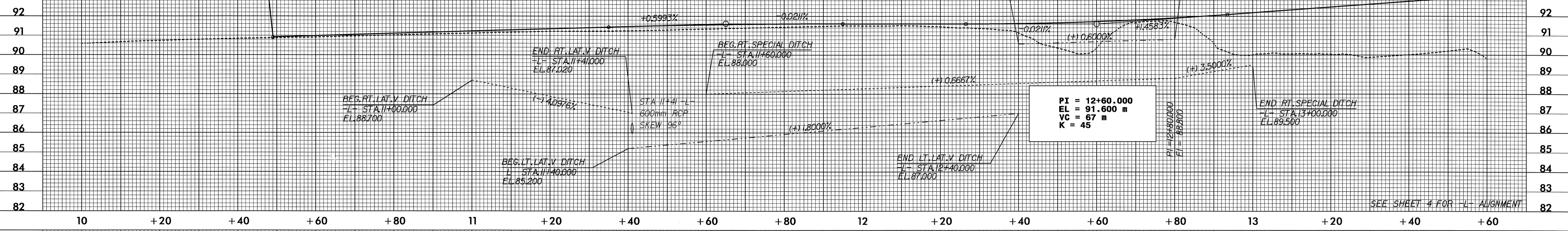
METRIC

5 0 10

CONST. REV.  
R / W REV.

ROADWAY DESIGN ENGINEER  
NORTH CAROLINA PROFESSIONAL SEAL 14493  
J. I. [Signature]

HYDRAULICS ENGINEER  
NORTH CAROLINA PROFESSIONAL SEAL 16746  
M. S. [Signature]



BM # 2 NCGS MONUMENT "SIGN"  
-BL- STA. 10+74.866  
N 144,432.710 E 510,312.693  
EL. 92.758

BEGIN BRIDGE  
STA 14+57.800 (-L-)

PI = 15+00.000  
EL = 95.100 m  
VC = 250 m  
K = 66

END BRIDGE  
STA 15+27.000 (-L-)

(-Y-) SR 1649 (Pleasant Grove Church Road)  
@ STA 16+43.779 (-L-)

