

NOTES

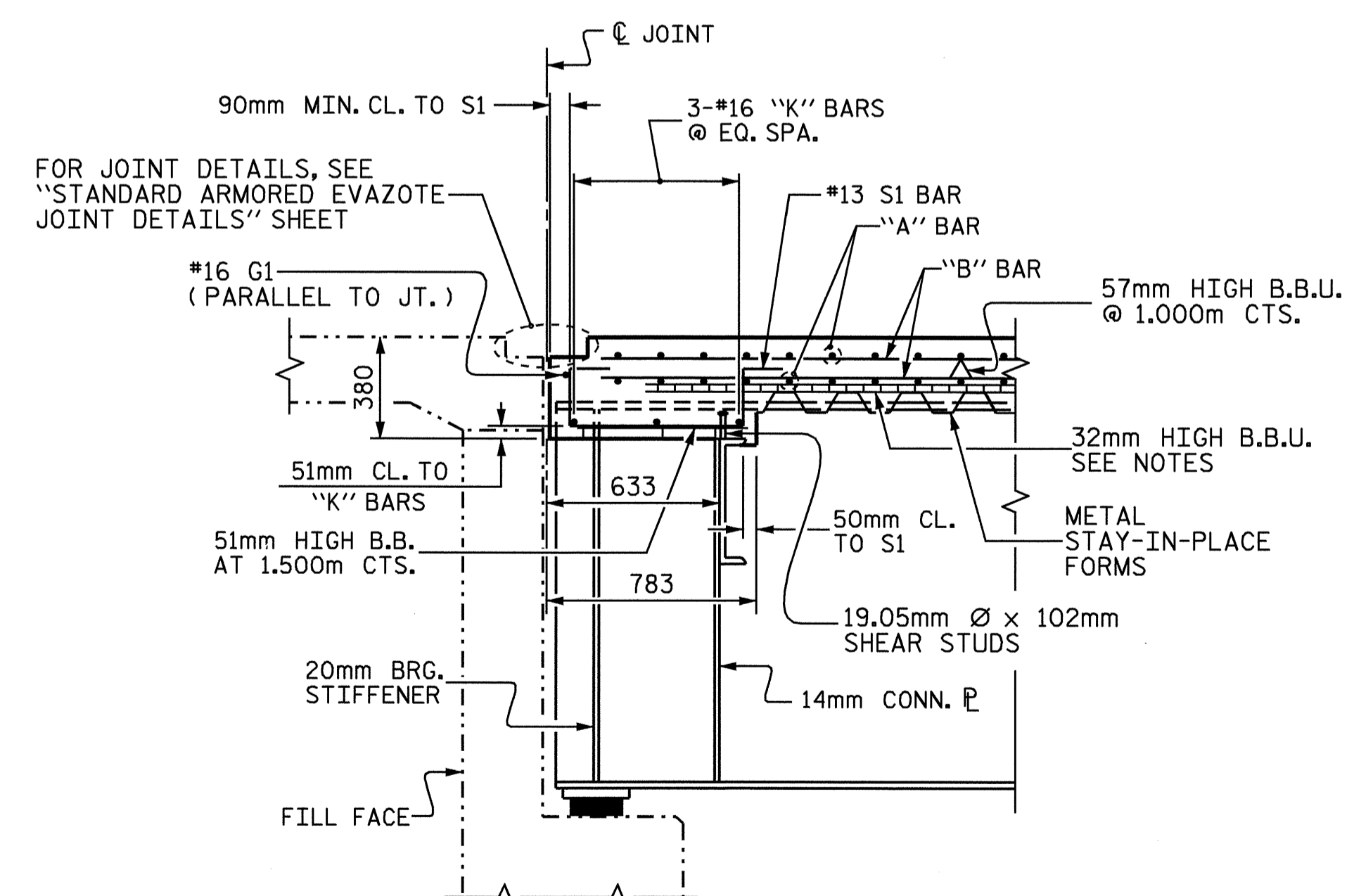
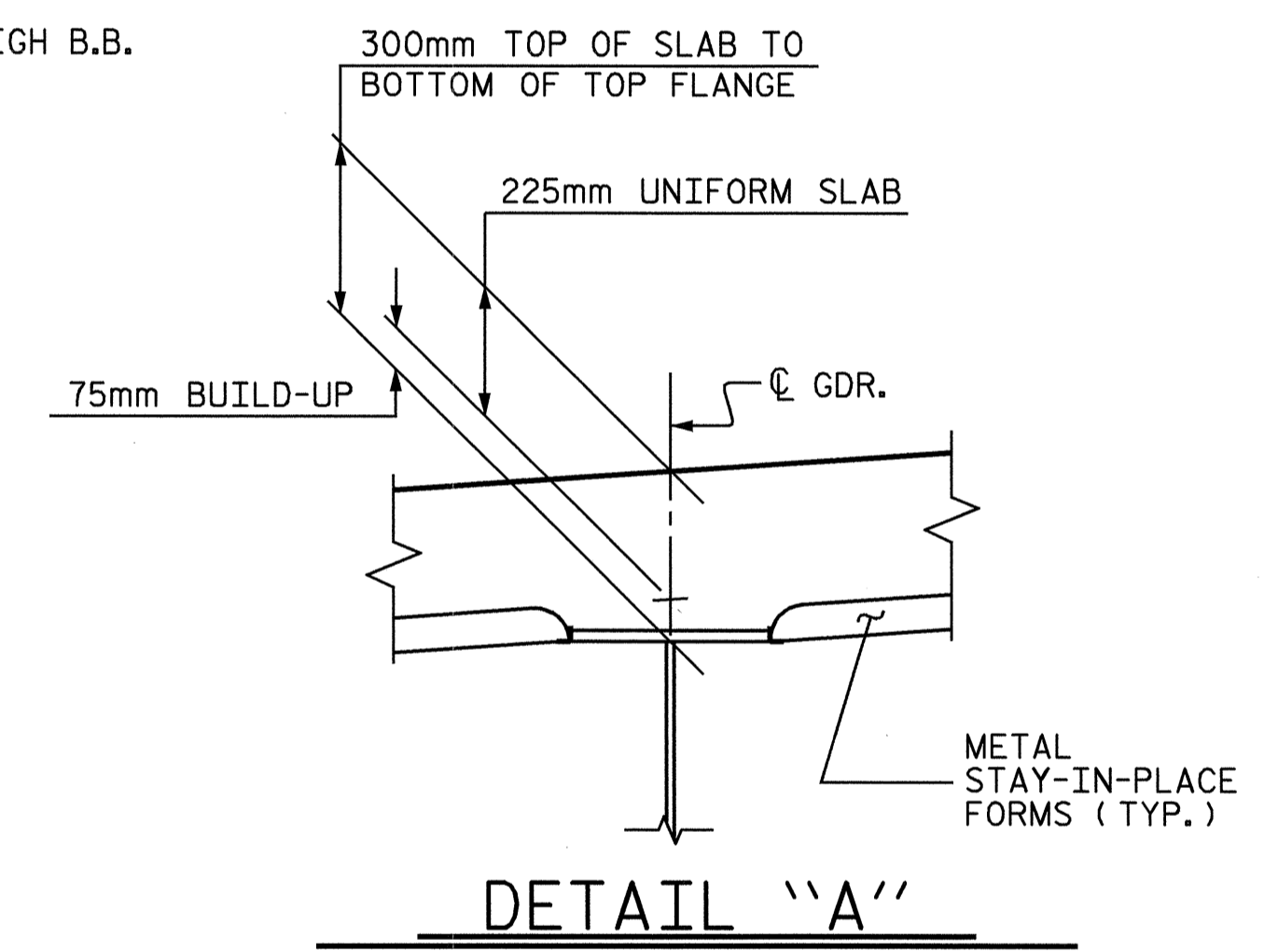
PROVIDE 32mm HIGH BEAM BOLSTERS UPPER AT 1.200m CTS. ATOP THE METAL STAY-IN-PLACE FORMS TO SUPPORT THE BOTTOM MAT OF "A" BARS. WHEN USING REMOVABLE FORMS, PROVIDE CONTINUOUS HIGH CHAIRS FOR METAL DECK (C.H.C.M.) @ 1.200m CTS. WITH A HEIGHT TO SUPPORT THE BOTTOM MAT OF "A" BARS A CLEAR DISTANCE OF 65mm ABOVE THE TOP OF THE REMOVABLE FORM.

*16 G1 BAR MAY BE SHIFTED SLIGHTLY, AS NECESSARY, TO CLEAR REINFORCING STEEL AND STIRRUPS.

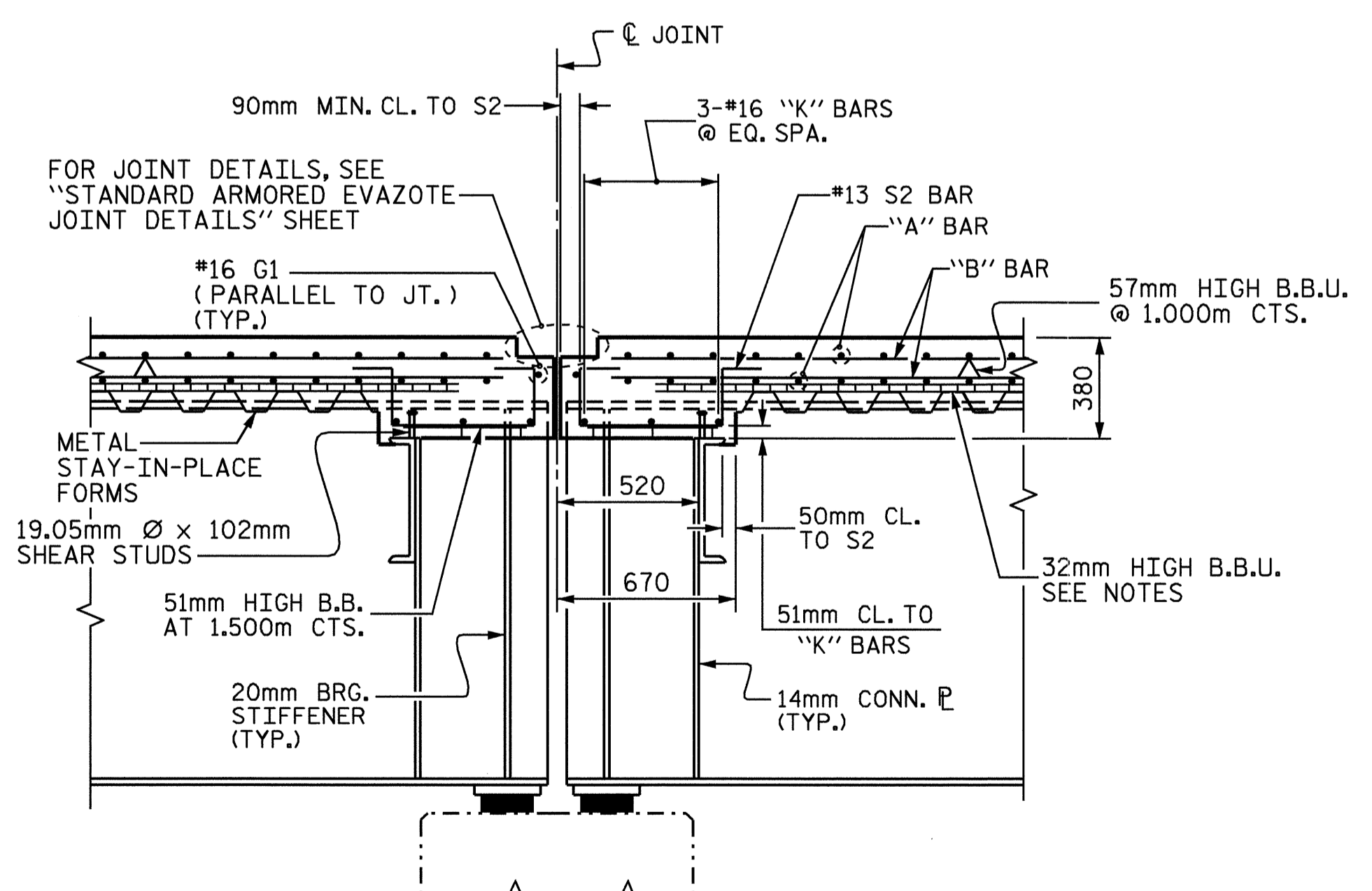
THE CONTRACTOR MAY, WHEN NECESSARY, PROPOSE A SCHEME FOR AVOIDING INTERFERENCE BETWEEN METAL STAY-IN-PLACE FORM SUPPORTS OR FORMS AND GIRDER STIFFENERS OR CONNECTOR PLATES. THE PROPOSAL SHALL BE INDICATED, AS APPROPRIATE, ON EITHER THE STEEL WORKING DRAWINGS OR THE METAL STAY-IN-PLACE FORM WORKING DRAWINGS.

HALF TYPICAL SECTION
SHOWING INTERMEDIATE DIAPHRAGMS

HALF TYPICAL SECTION
SHOWING END BENT AND BENT DIAPHRAGMS



SECTION A-A

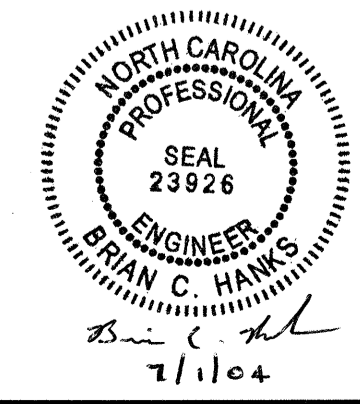


SECTION B-B
DETAILS ARE TYPICAL EACH SIDE OF JOINT

NOTE:
FOR LOCATION OF SECTIONS,
SEE "PLAN OF SPAN" SHEETS

PROJECT NO. B-1019
ANSON COUNTY
STATION: 14+94.156 -L-

| | | | | | |
|--|-----|-------|-----|-----|--------------------|
| STATE OF NORTH CAROLINA DEPARTMENT OF TRANSPORTATION RALEIGH | | | | | |
| SUPERSTRUCTURE TYPICAL SECTION | | | | | |
| REVISIONS | | | | | |
| NO. | BY: | DATE: | NO. | BY: | DATE: |
| 1 | | | 3 | | |
| 2 | | | 4 | | |
| | | | | | SHEET NO. S-6 |
| | | | | | TOTAL SHEETS 35 |



DRAWN BY: MIKE BRITT/KWA DATE: 10-16-02
CHECKED BY: W.C. CARTER DATE: 11-03