

NOTES :

ALL STRUCTURAL STEEL SHALL BE AASHTO M270 GRADE 345W AND PAINTED IN ACCORDANCE WITH SYSTEM 4 OF ARTICLE 442-7 OF THE STANDARD SPECIFICATIONS UNLESS OTHERWISE NOTED ON THE PLANS.

ALL DIMENSIONS SHOWN ARE HORIZONTAL OR VERTICAL, UNLESS OTHERWISE NOTED ON THE PLANS.

ALL FIELD CONNECTIONS TO BE 22.23mm Ø HIGH STRENGTH BOLTS, UNLESS OTHERWISE NOTED ON THE PLANS.

SHOP SPLICES ARE PERMITTED TO LIMIT THE MAXIMUM REQUIRED FLANGE PIECE LENGTHS TO 18 METERS AND WEB PIECE LENGTHS TO 14 METERS. PERMITTED FLANGE AND WEB SHOP SPLICES SHALL NOT BE LOCATED WITHIN 4.5 METERS OF MAXIMUM DEAD LOAD DEFLECTION. KEEP 600mm MINIMUM BETWEEN WEB AND FLANGE SHOP SPLICES.

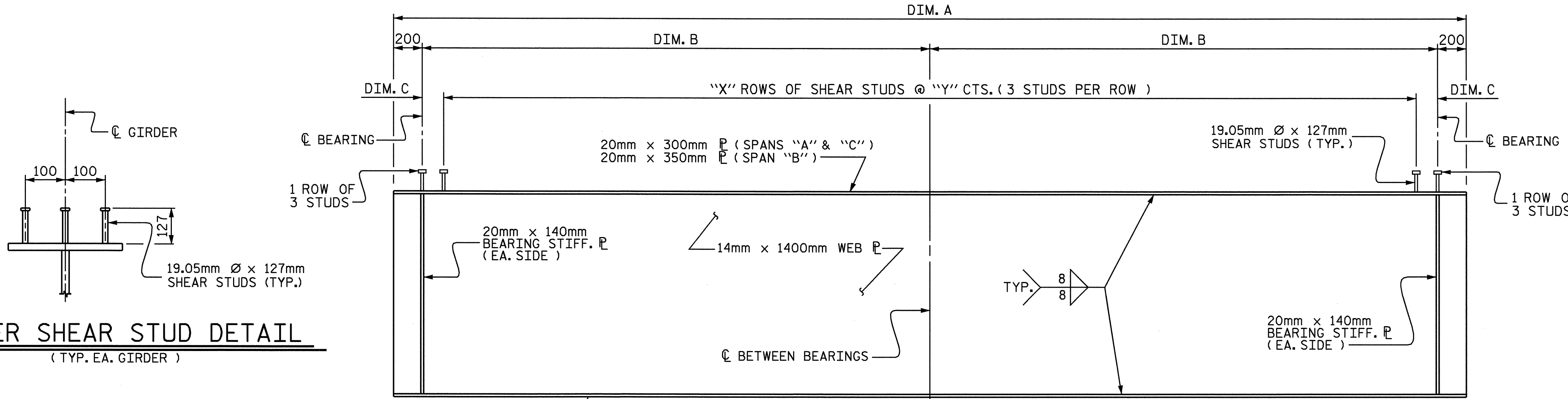
A CHARPY V-NOTCH TEST IS REQUIRED FOR WEB PLATES AND BOTTOM FLANGE PLATES FOR ALL GIRDERS AND SHALL BE IN ACCORDANCE WITH ARTICLE 1072-9 OF THE STANDARD SPECIFICATIONS.

STUDS ON GIRDERS MAY BE SHIFTED UP TO 25mm IF NECESSARY TO CLEAR FLANGE SPLICE WELD.

ENDS OF GIRDERS SHALL BE PLUMB.

BEARING STIFFENERS ARE TO BE PLACED NORMAL TO THE WEB AND SHALL BE PLUMB.

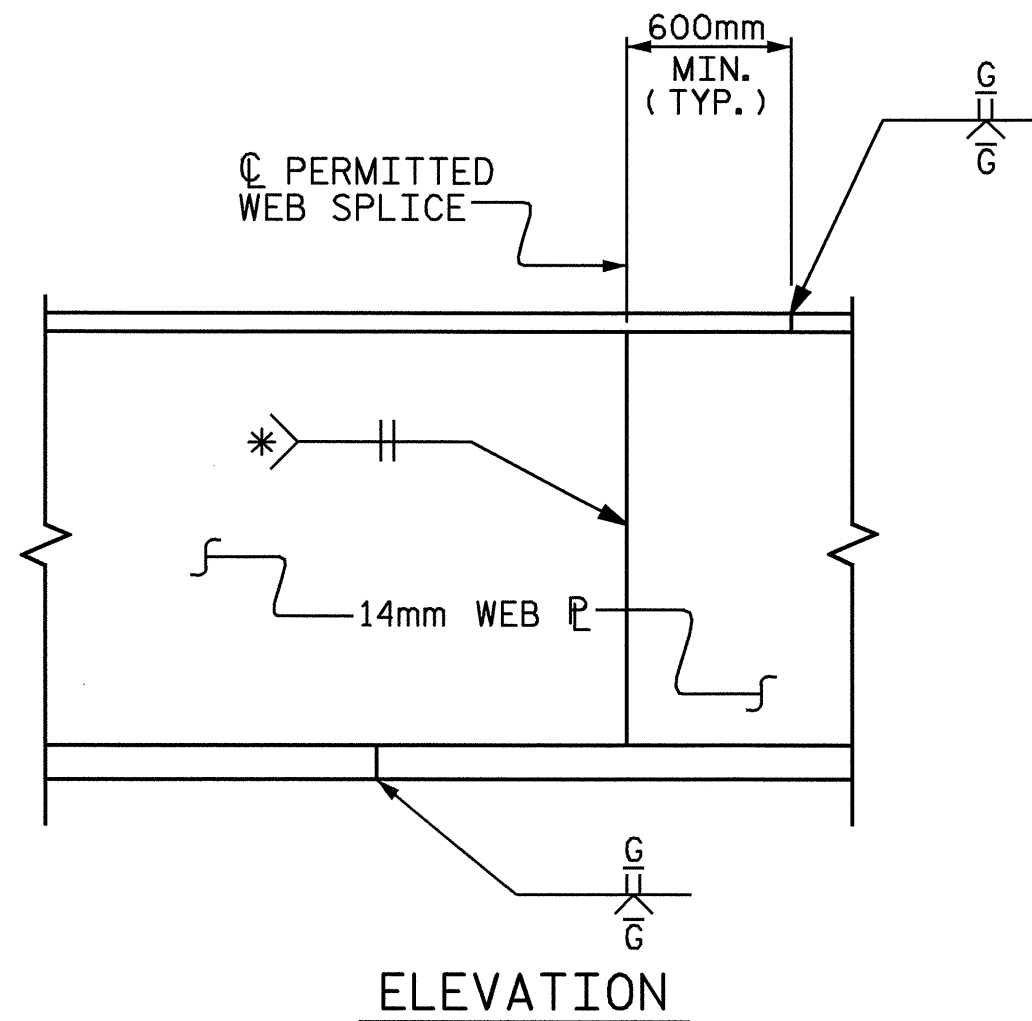
TENSION ON THE AASHTO M164 BOLTS SHALL BE CALIBRATED USING DIRECT TENSION INDICATOR WASHERS IN ACCORDANCE WITH ARTICLE 440-10 OF THE STANDARD SPECIFICATIONS.



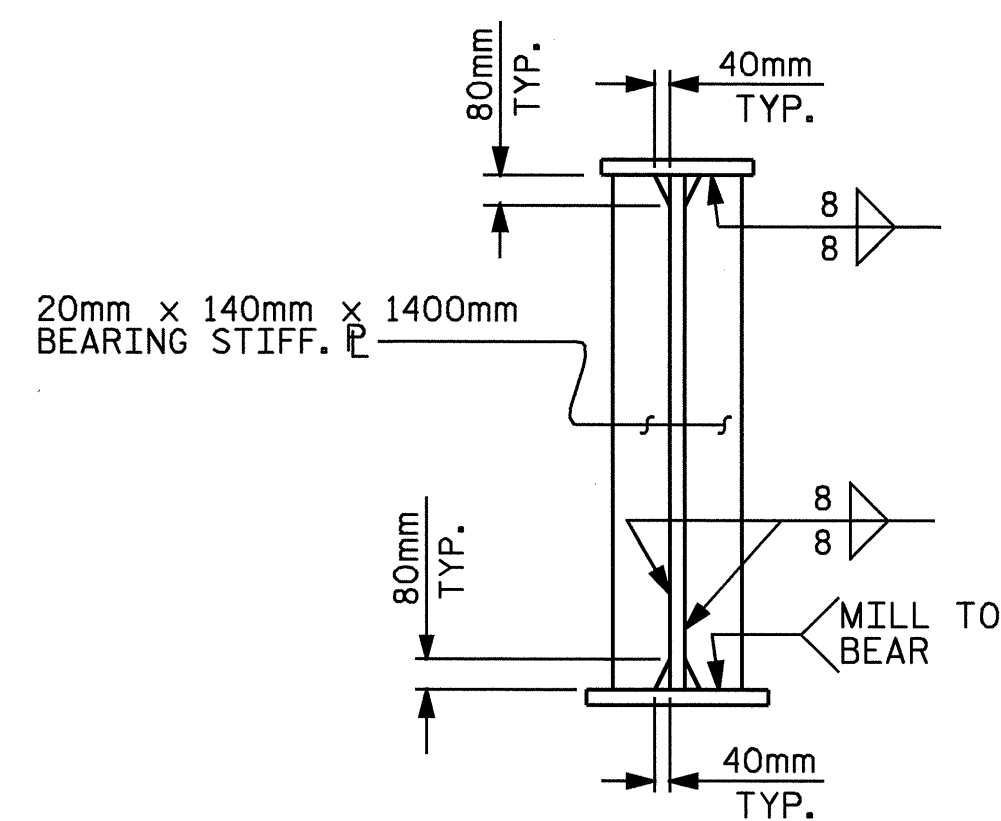
GIRDER SHEAR STUD DETAIL
(TYP. EA. GIRDER)

PLATE GIRDER ELEVATION
SEE GIRDER TABLE

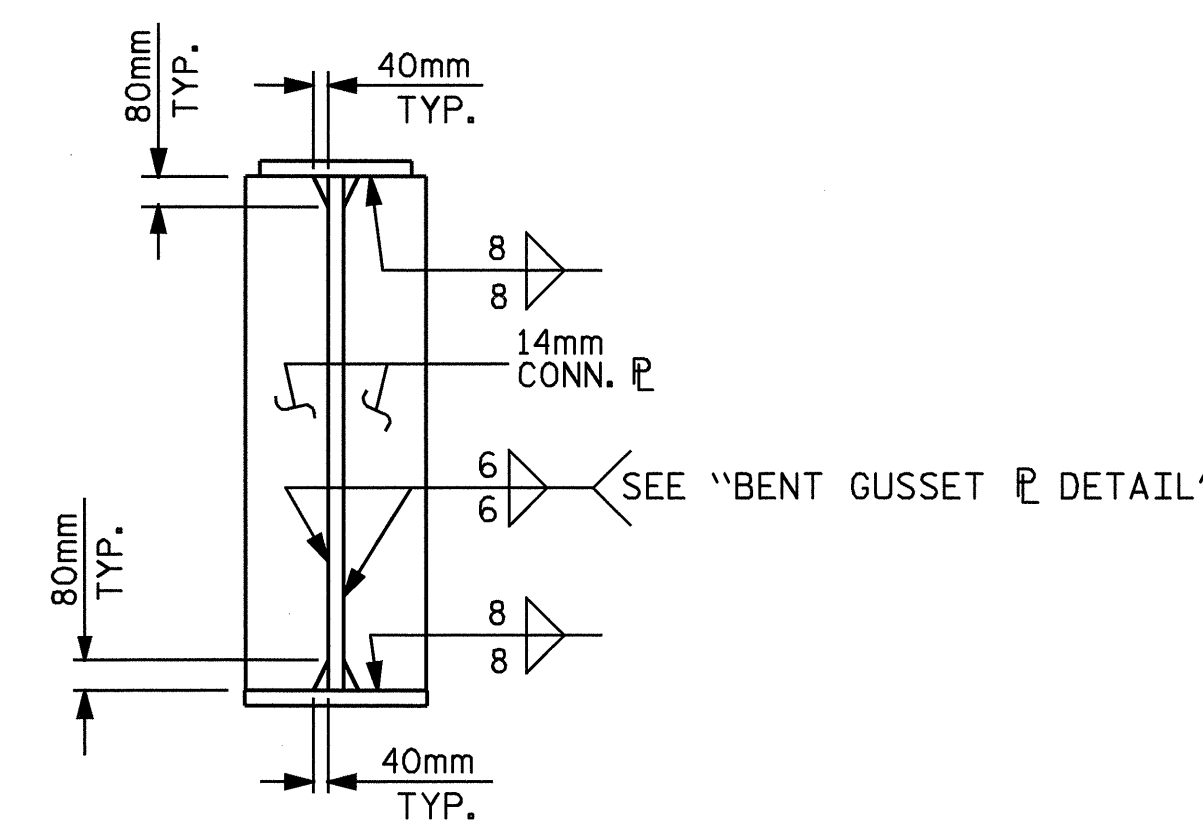
* GRIND SMOOTH AND FLUSH ON OUTER FACE OF EXTERIOR GIRDERS.



PERMISSIBLE SHOP FLANGE & WEB SPLICE



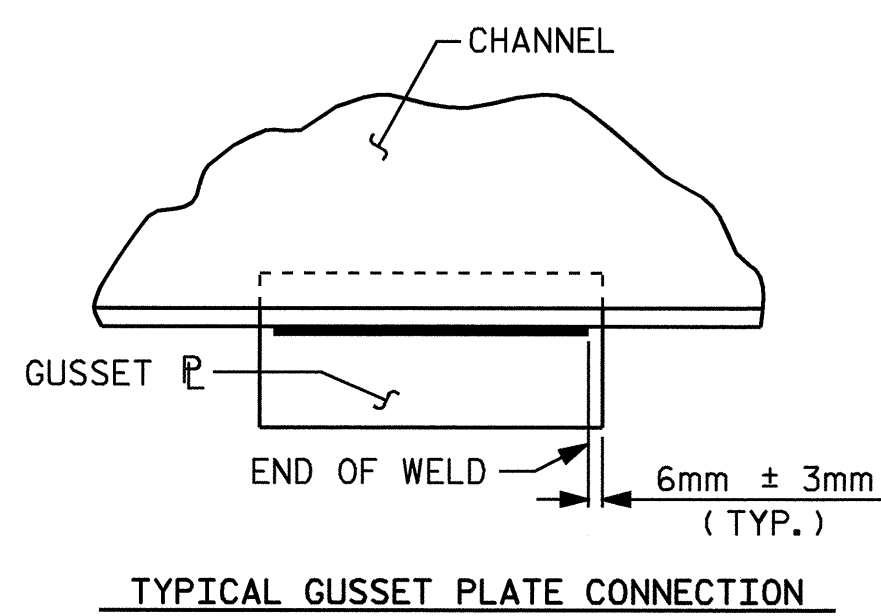
BEARING STIFFENER



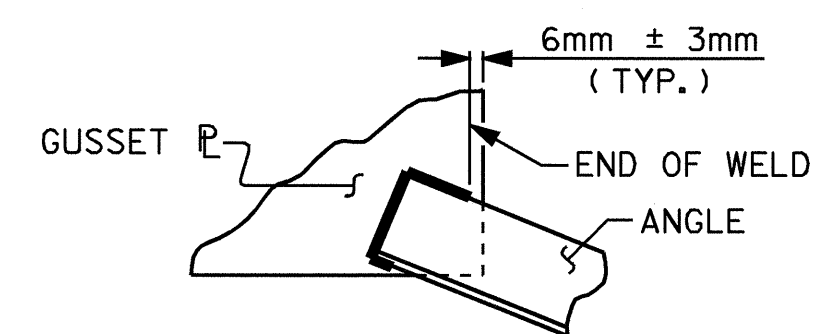
CONNECTOR PLATES

GIRDER TABLE						
GIRDER	DIM. A	DIM. B	DIM. C	DIM. D	"X"	"Y"
A1	19.560m	9.580m	130mm	791mm	71	270mm
A2	19.530m	9.565m	115mm	790mm	71	270mm
A3	19.510m	9.555m	105mm	789mm	71	270mm
A4	19.480m	9.540m	90mm	788mm	71	270mm
A5	19.460m	9.530m	80mm	787mm	71	270mm
B1	32.300m	15.950m	200mm	--	106	300mm
B2	32.240m	15.920m	170mm	--	106	300mm
B3	32.190m	15.895m	145mm	--	106	300mm
B4	32.140m	15.870m	120mm	--	106	300mm
B5	32.080m	15.840m	90mm	--	106	300mm
C1	15.930m	7.765m	205mm	832mm	64	240mm
C2	15.900m	7.750m	190mm	831mm	64	240mm
C3	15.870m	7.735m	175mm	829mm	64	240mm
C4	15.840m	7.720m	160mm	827mm	64	240mm
C5	15.800m	7.700m	140mm	826mm	64	240mm

FOR "DIM. D" LOCATION, SEE "BOTTOM FLANGE DETAIL", SHEET 2 OF 2

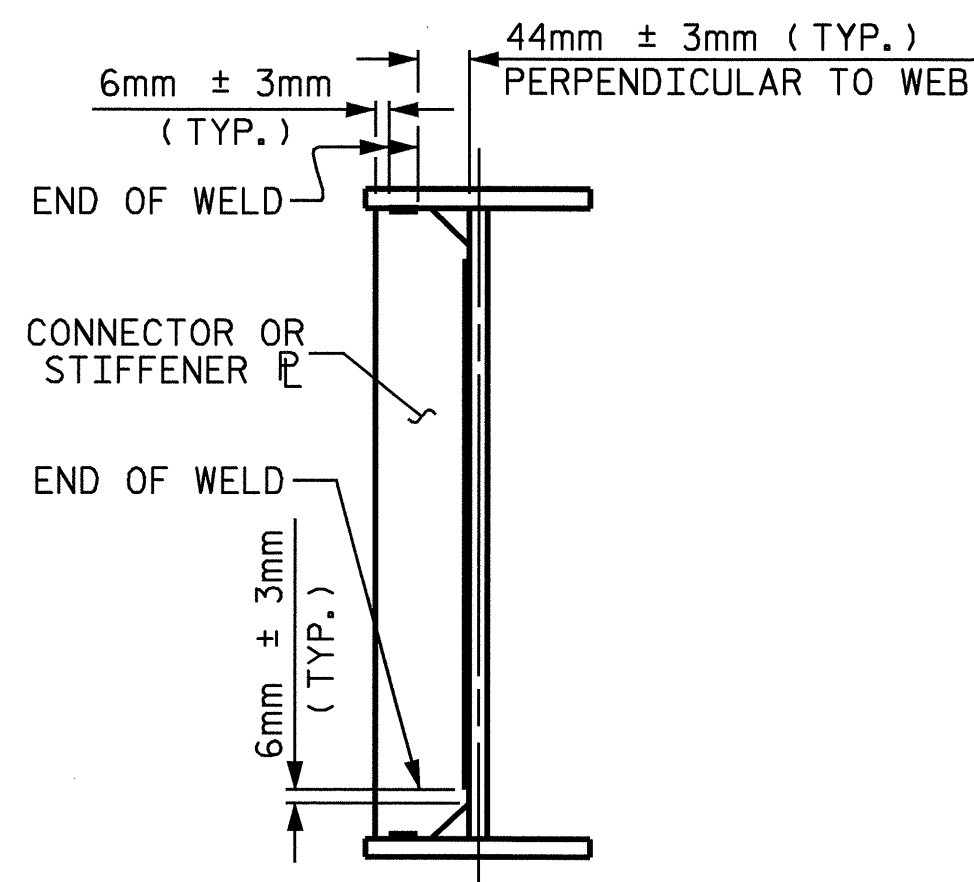


TYPICAL GUSSET PLATE CONNECTION

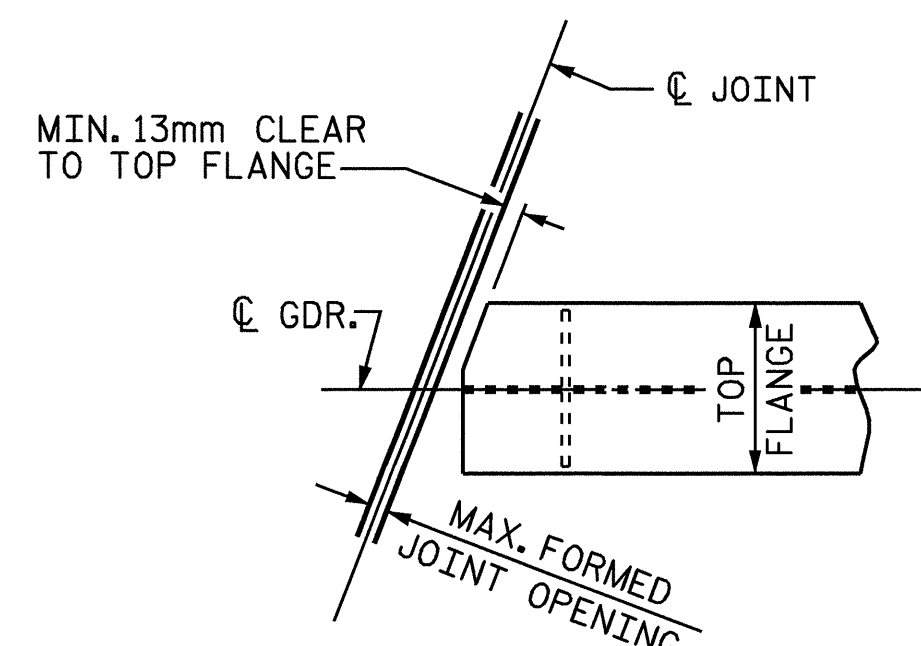


TYPICAL ANGLE TO GUSSET PLATE CONNECTION

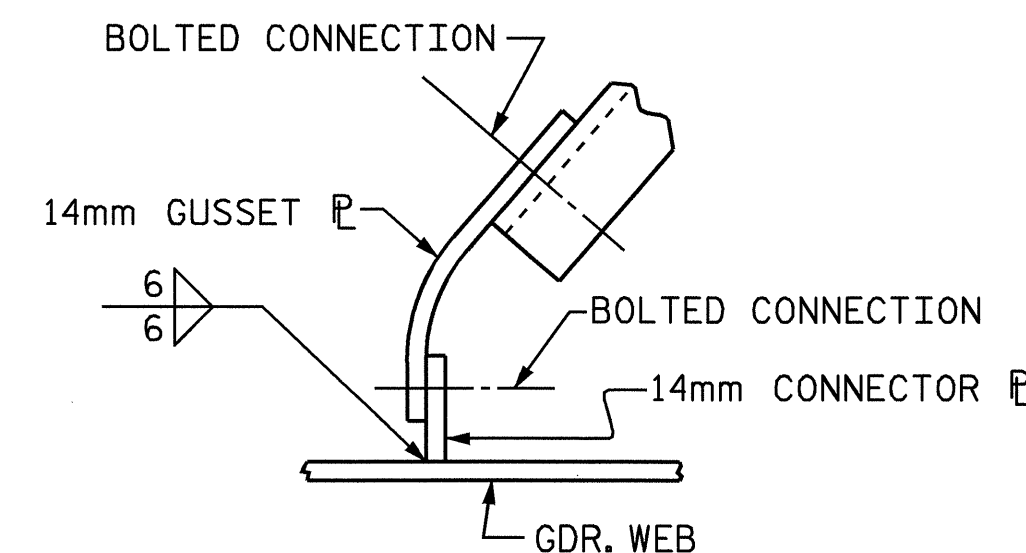
WELD TERMINATION DETAILS



TYPICAL STIFFENER OR CONNECTOR PLATE CONNECTIONS



TOP FLANGE CLIP DETAIL
TYPICAL ALL GIRDERS AT BENT No.1 & BENT No.2



BENT GUSSET DETAIL
(FOR END BENT AND BENT DIAPHRAGMS)

PROJECT NO. B-1019
ANSON COUNTY
STATION: 14+94.156 -L-

SHEET 1 OF 2

STATE OF NORTH CAROLINA
DEPARTMENT OF TRANSPORTATION
RALEIGH

SUPERSTRUCTURE
STRUCTURAL STEEL
DETAILS



7/1/04

REVISIONS						SHEET NO. S-14 TOTAL SHEETS 35
NO.	BY:	DATE:	NO.	BY:	DATE:	
1			3			
2			4			

DRAWN BY: MIKE BRITT/KWA DATE: 10-21-02
CHECKED BY: W.C. CARTER DATE: 11-03