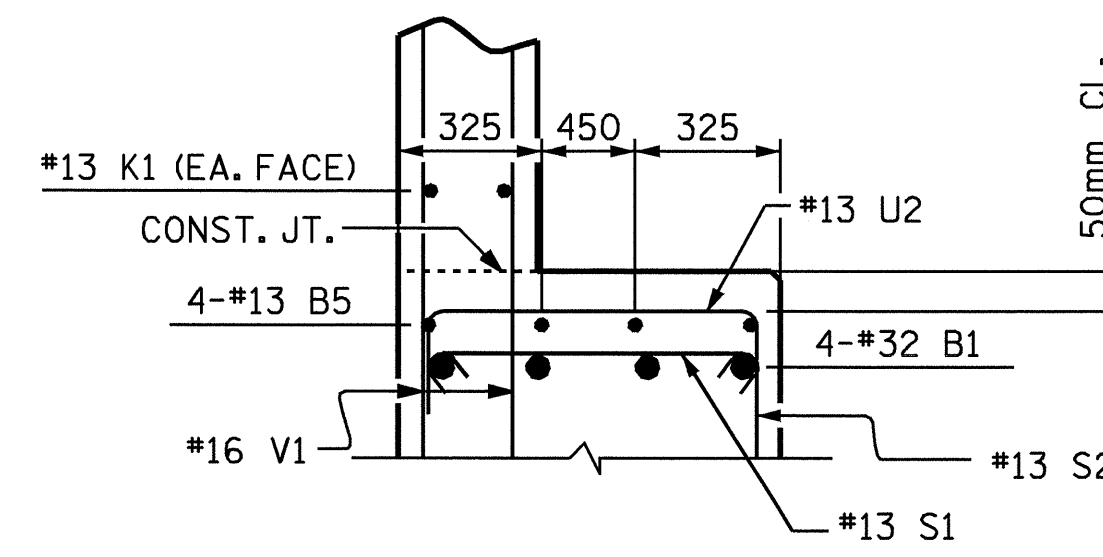
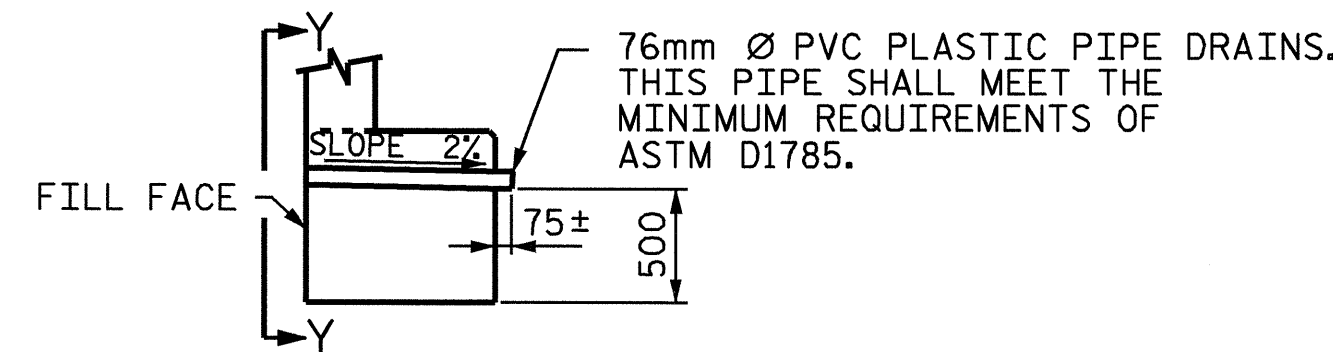


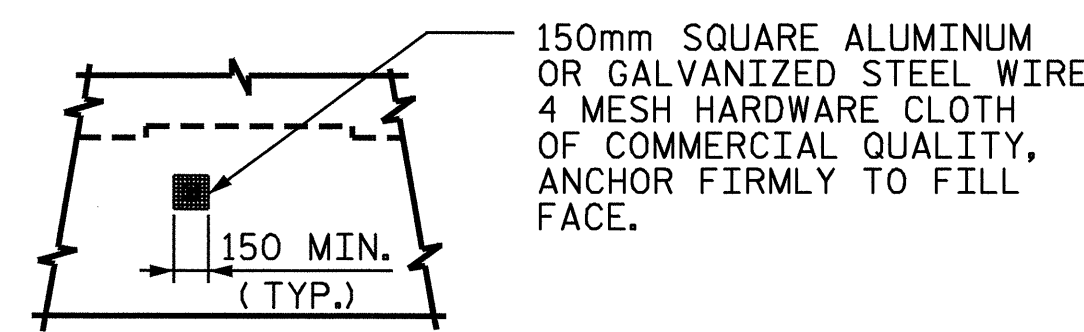
**SECTION A-A**



**SECTION B-B**



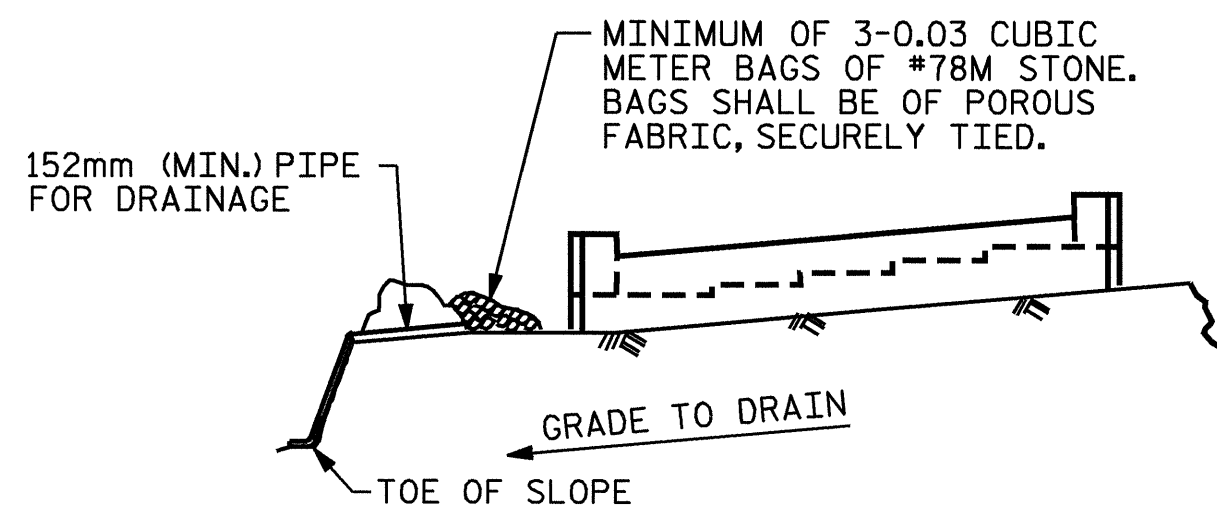
**SECTION THRU CAP**



**VIEW Y-Y**

NOTE: NO SEPARATE PAYMENT WILL BE MADE FOR FURNISHING AND INSTALLING THE PVC PLASTIC PIPE DRAINS, HARDWARE CLOTH AND FASTENERS. THE ENTIRE COST OF THIS WORK SHALL BE INCLUDED IN THE UNIT CONTRACT PRICE BID FOR THE SEVERAL PAY ITEMS.

**PIPE DRAIN DETAILS**



BAGGED STONE AND PIPE SHALL BE PLACED IMMEDIATELY AFTER COMPLETION OF END BENT EXCAVATION. PIPE MAY BE EITHER CONCRETE, CORRUGATED STEEL, CORRUGATED ALUMINUM ALLOY, OR CORRUGATED PLASTIC. PERFORATED PIPE WILL NOT BE ALLOWED.

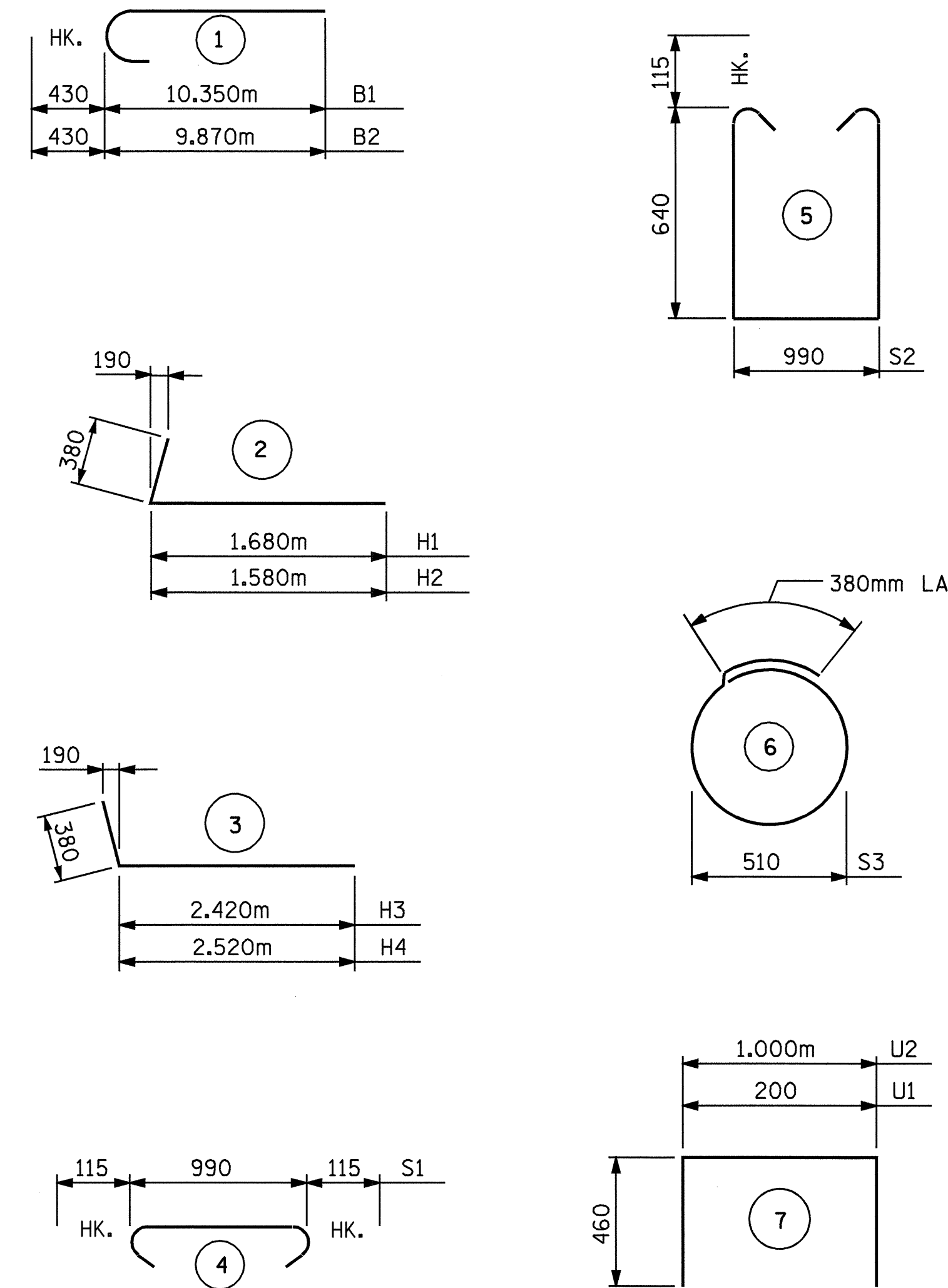
BAGGED STONE SHALL REMAIN IN PLACE UNTIL THE ENGINEER DIRECTS THAT IT BE REMOVED. THE CONTRACTOR SHALL REMOVE AND DISPOSE OF SILT ACCUMULATIONS AT BAGGED STONE WHEN SO DIRECTED BY THE ENGINEER. BAGS SHALL BE REMOVED AND REPLACED WHENEVER THE ENGINEER DETERMINES THAT THEY HAVE DETERIORATED AND LOST THEIR EFFECTIVENESS.

NO SEPARATE PAYMENT WILL BE MADE FOR THIS WORK AND THE ENTIRE COST OF THIS WORK SHALL BE INCLUDED IN THE UNIT CONTRACT PRICE BID FOR THE SEVERAL PAY ITEMS.

**TEMPORARY DRAINAGE AT END BENT**

DRAWN BY : D. G. ELY DATE : 11/03  
 CHECKED BY : A. B. NAIK DATE : 1/13/04

**BAR TYPES**



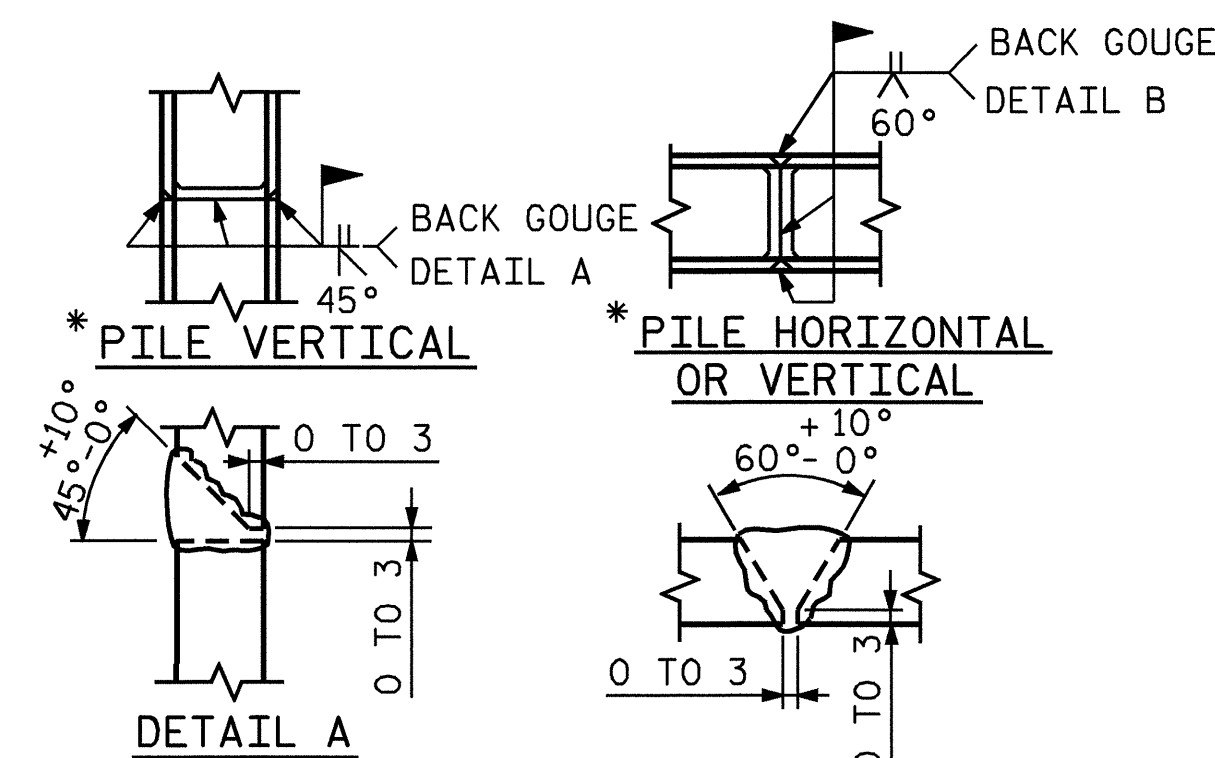
ALL BAR DIMENSIONS ARE OUT TO OUT.

**BILL OF MATERIAL**

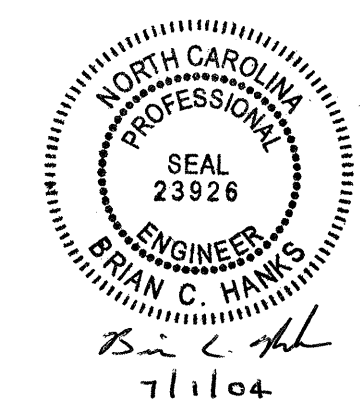
**END BENT #1**

BAR NO.	SIZE	TYPE	LENGTH	WEIGHT	
B1	8	32	1	10780	552
B2	8	32	1	10300	527
B3	8	16	STR	9120	113
B4	12	13	STR	6260	75
B5	16	13	STR	740	12
B6	4	13	STR	1200	5
B7	15	13	STR	1000	15
H1	10	22	2	2060	63
H2	10	22	2	1960	60
H3	10	22	3	2800	85
H4	10	22	3	2900	88
K1	30	13	STR	6260	187
K2	8	13	STR	1000	8
S1	65	13	4	1220	79
S2	65	13	5	2500	162
S3	16	13	6	1980	31
U1	50	13	7	1120	56
U2	23	13	7	1920	44
V1	100	16	STR	2160	335
V2	20	16	STR	2620	81
V3	26	16	STR	2520	102

REINFORCING STEEL = 2680 kg  
 CLASS A CONCRETE  
 POUR #1: CAP & LOWER PART OF WINGS 16.9 CU. METERS  
 POUR #2: BACKWALL & UPPER PART OF WINGS 10.3 CU. METERS  
 TOTAL 27.2 CU. METERS  
 HP 310 X 79 STEEL PILES NO. 8 84 METERS



**PILE SPLICE DETAILS**



PROJECT NO. B-1019  
ANSON COUNTY  
 STATION: 14+94.156 -L-  
 SHEET 3 OF 3

REVISIONS				SHEET NO.	
NO.	BY:	DATE:	NO.	BY:	DATE:
1			3		
2			4		

SUBSTRUCTURE  
END BENT #1

TOTAL SHEETS  
35