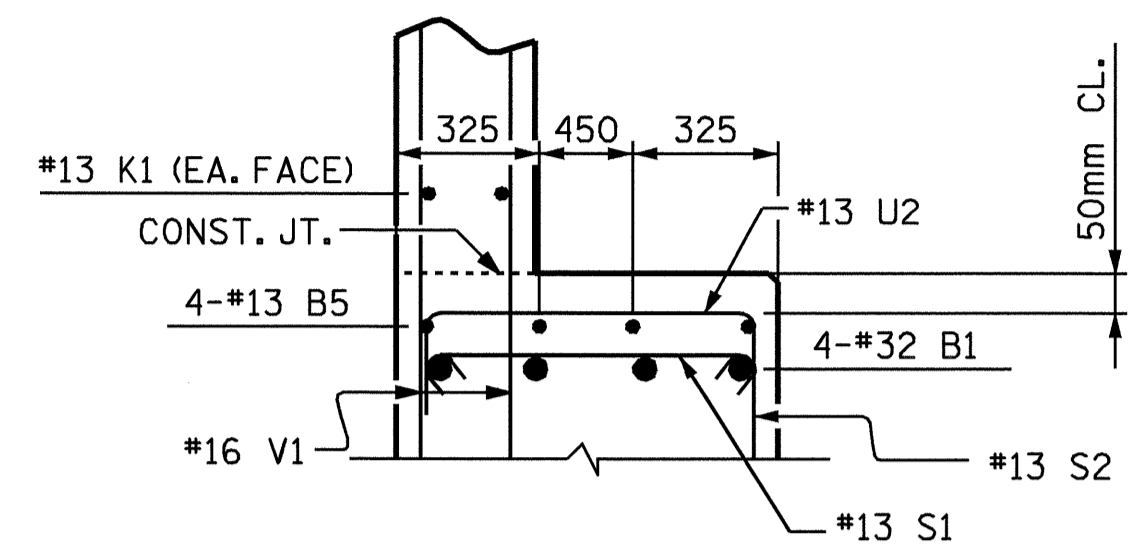
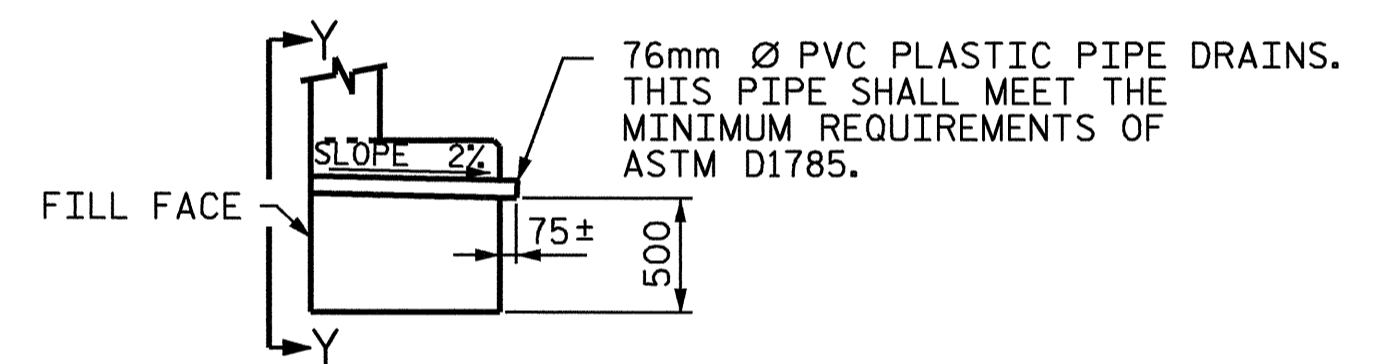


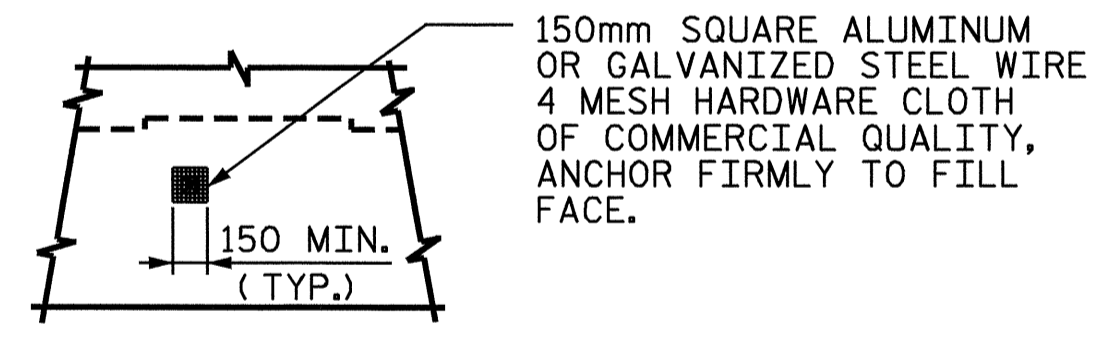
SECTION A-A



SECTION B-B



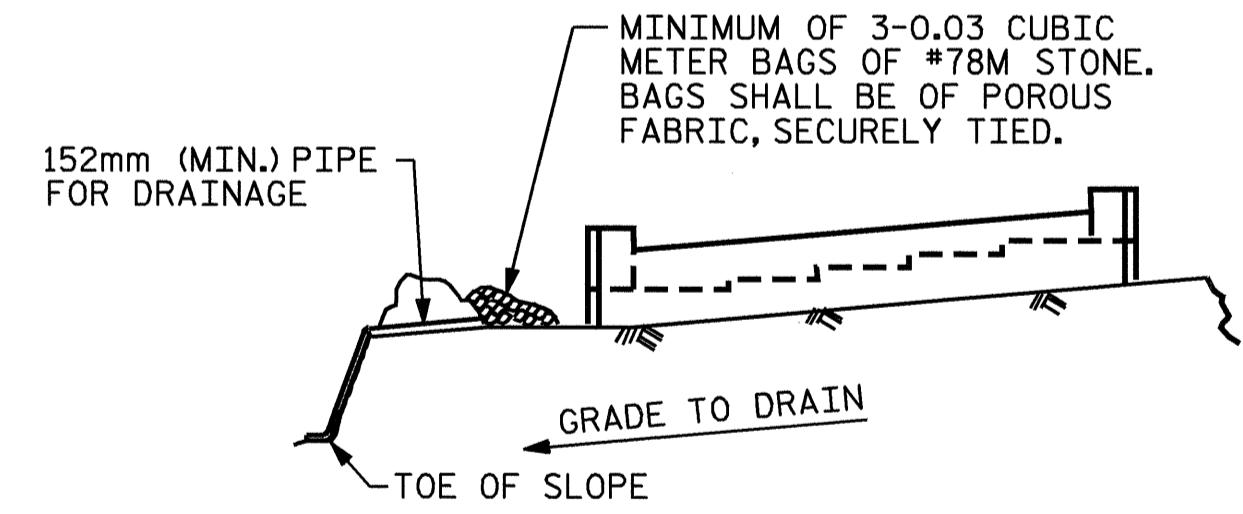
SECTION THRU CAP



VIEW Y-Y

NOTE: NO SEPARATE PAYMENT WILL BE MADE FOR FURNISHING AND INSTALLING THE PVC PLASTIC PIPE DRAINS, HARDWARE CLOTH AND FASTENERS. THE ENTIRE COST OF THIS WORK SHALL BE INCLUDED IN THE UNIT CONTRACT PRICE BID FOR THE SEVERAL PAY ITEMS.

PIPE DRAIN DETAILS

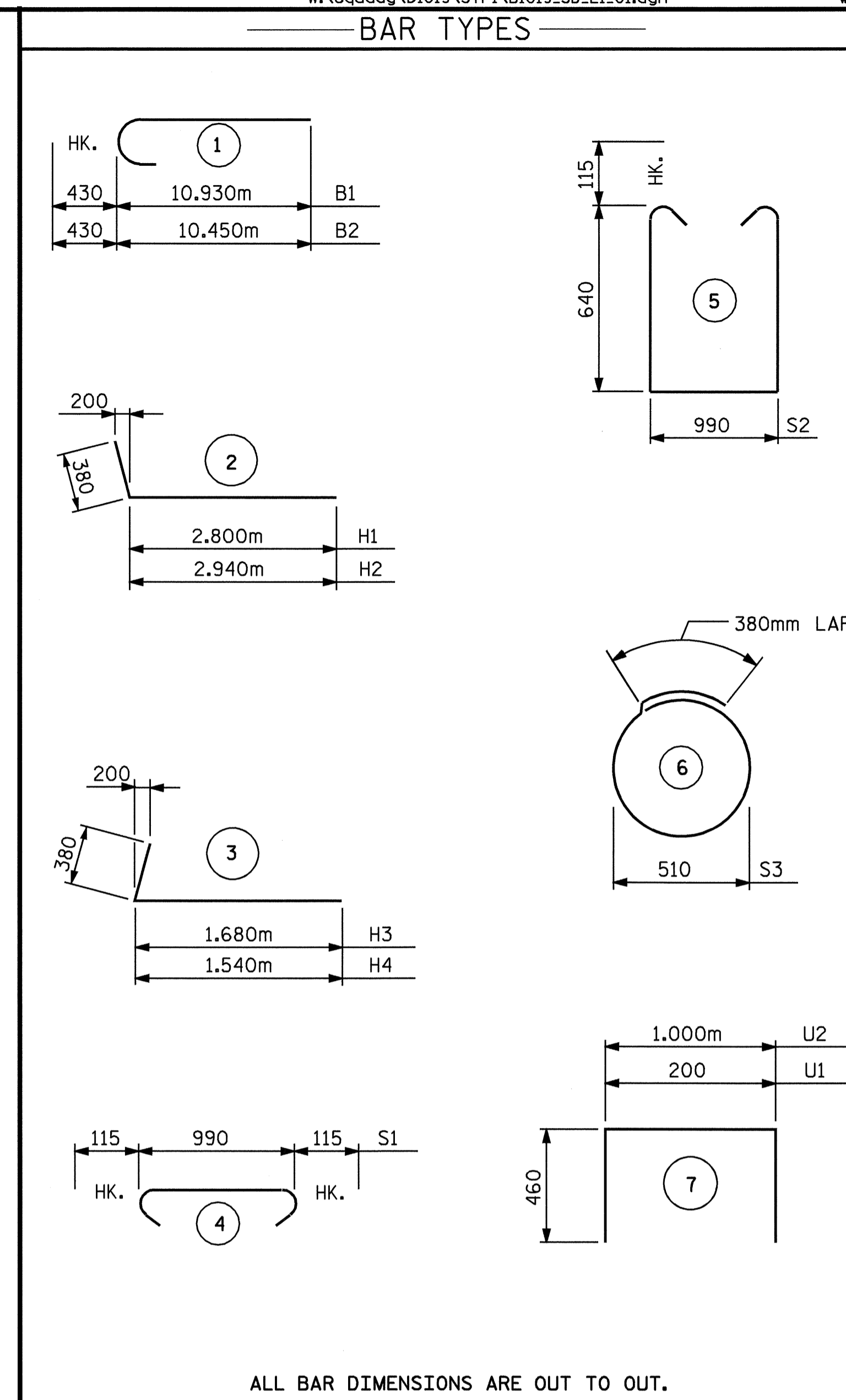


BAGGED STONE AND PIPE SHALL BE PLACED IMMEDIATELY AFTER COMPLETION OF END BENT EXCAVATION. PIPE MAY BE EITHER CONCRETE, CORRUGATED STEEL, CORRUGATED ALUMINUM ALLOY, OR CORRUGATED PLASTIC. PERFORATED PIPE WILL NOT BE ALLOWED.

BAGGED STONE SHALL REMAIN IN PLACE UNTIL THE ENGINEER DIRECTS THAT IT BE REMOVED. THE CONTRACTOR SHALL REMOVE AND DISPOSE OF SILT ACCUMULATIONS AT BAGGED STONE WHEN SO DIRECTED BY THE ENGINEER. BAGS SHALL BE REMOVED AND REPLACED WHENEVER THE ENGINEER DETERMINES THAT THEY HAVE DETERIORATED AND LOST THEIR EFFECTIVENESS.

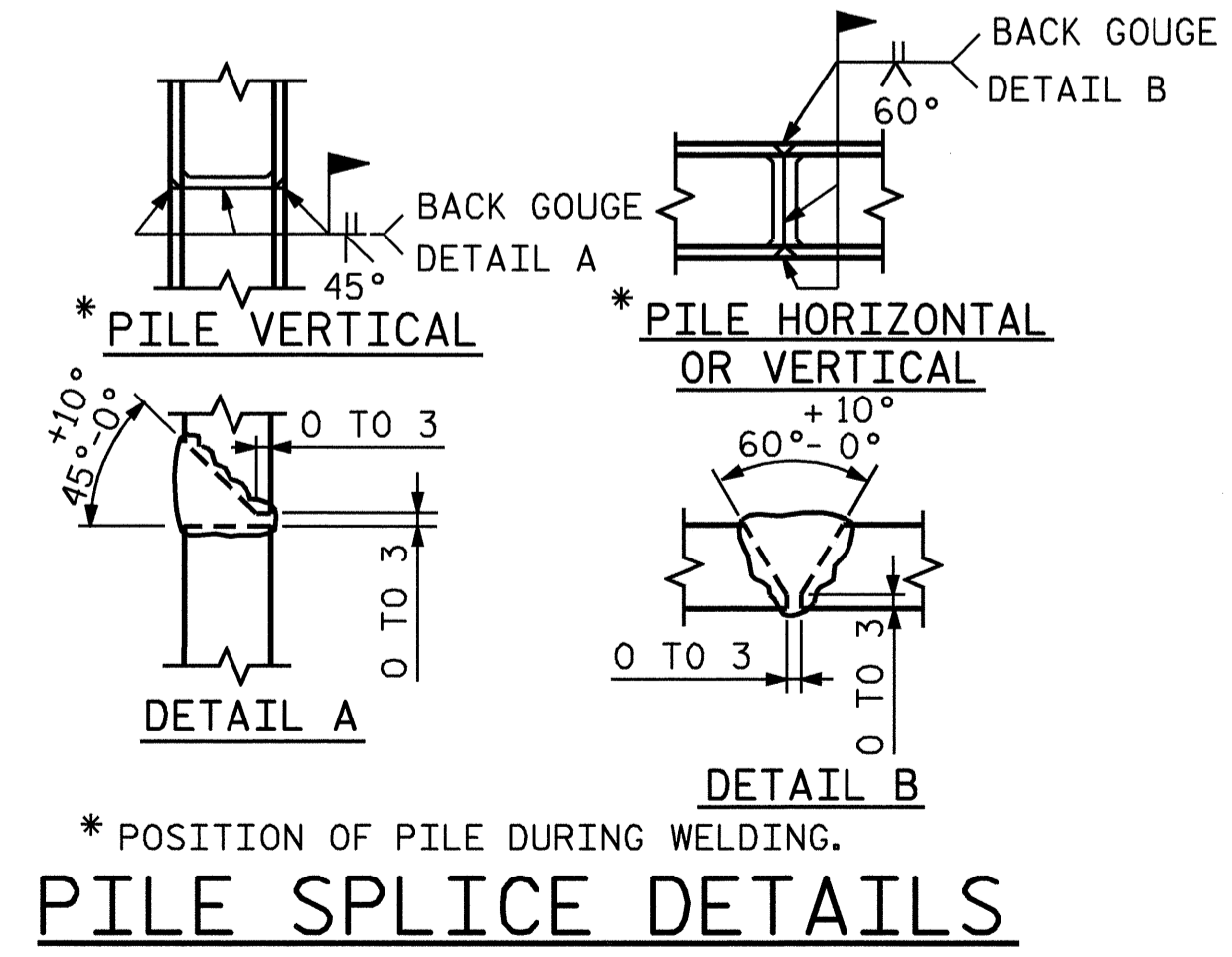
NO SEPARATE PAYMENT WILL BE MADE FOR THIS WORK AND THE ENTIRE COST OF THIS WORK SHALL BE INCLUDED IN THE UNIT CONTRACT PRICE BID FOR THE SEVERAL PAY ITEMS.

TEMPORARY DRAINAGE AT END BENT



ALL BAR DIMENSIONS ARE OUT TO OUT.

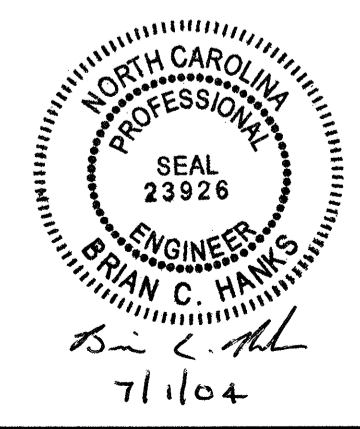
BILL OF MATERIAL					
END BENT #2					
BAR	NO.	SIZE	TYPE	LENGTH	WEIGHT
B1	8	32	1	11360	582
B2	8	32	1	10880	557
B3	8	16	STR	9700	120
B4	12	13	STR	6660	79
B5	12	13	STR	740	9
B6	4	13	STR	2600	10
B7	4	13	STR	1100	4
B8	15	13	STR	1000	15
H1	10	22	2	3180	97
H2	10	22	2	3320	101
H3	10	22	3	2060	63
H4	10	22	3	1920	58
K1	30	13	STR	6660	199
K2	8	13	STR	1060	8
S1	65	13	4	1220	79
S2	65	13	5	2500	162
S3	16	13	6	1980	31
U1	53	13	7	1120	59
U2	26	13	7	1920	50
V1	106	16	STR	2180	365
V2	28	16	STR	2640	115
V3	20	16	STR	2520	78
REINFORCING STEEL					= 2841 kg
CLASS A CONCRETE					
POUR #1: CAP & LOWER PART OF WINGS				18.8 CU. METERS	
POUR #2: BACKWALL & UPPER PART OF WINGS				11.0 CU. METERS	
TOTAL				29.8 CU. METERS	
HP 310 X 79 STEEL PILES					
NO. 8				84 METERS	



PILE SPLICE DETAILS

PROJECT NO. B-1019
ANSON COUNTY
 STATION: 14+94.156 -L-
 SHEET 3 OF 3

STATE OF NORTH CAROLINA DEPARTMENT OF TRANSPORTATION RALEIGH					
SUBSTRUCTURE END BENT #2					
REVISIONS					
NO.	BY:	DATE:	NO.	BY:	DATE:
1			3		
2			4		
SHEET NO. S-30					TOTAL SHEETS 35



DRAWN BY : D. G. ELY DATE : 11/03
 CHECKED BY : A. B. NAIK DATE : 1/15/04