

NOTE:
PLACE TEMPORARY ROCK SEDIMENT DAMS TYPE-B AND TEMPORARY ROCK SILT CHECKS TYPE-A AT DRAINAGE OUTLETS.

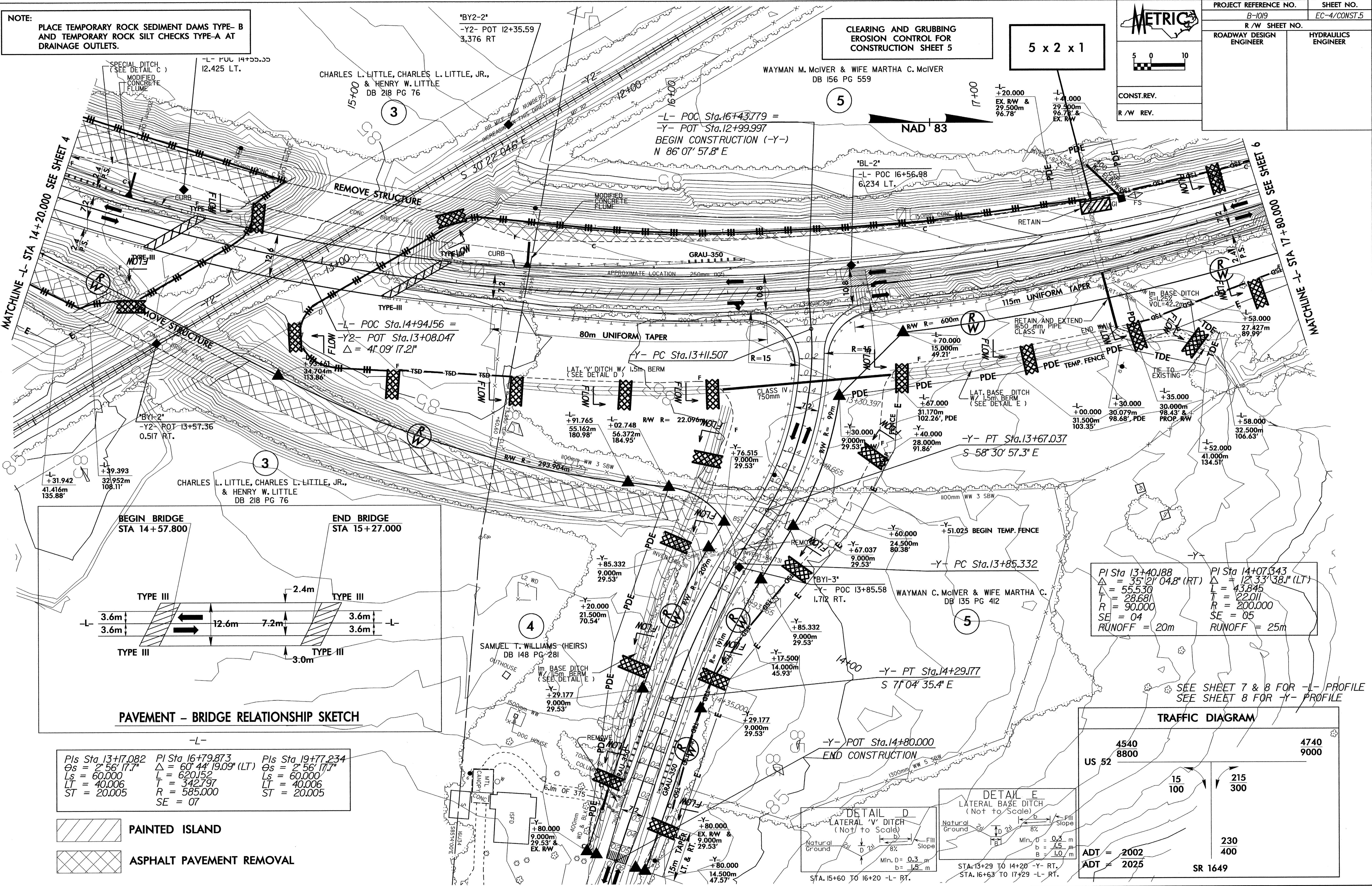
METRIC

5 0 10

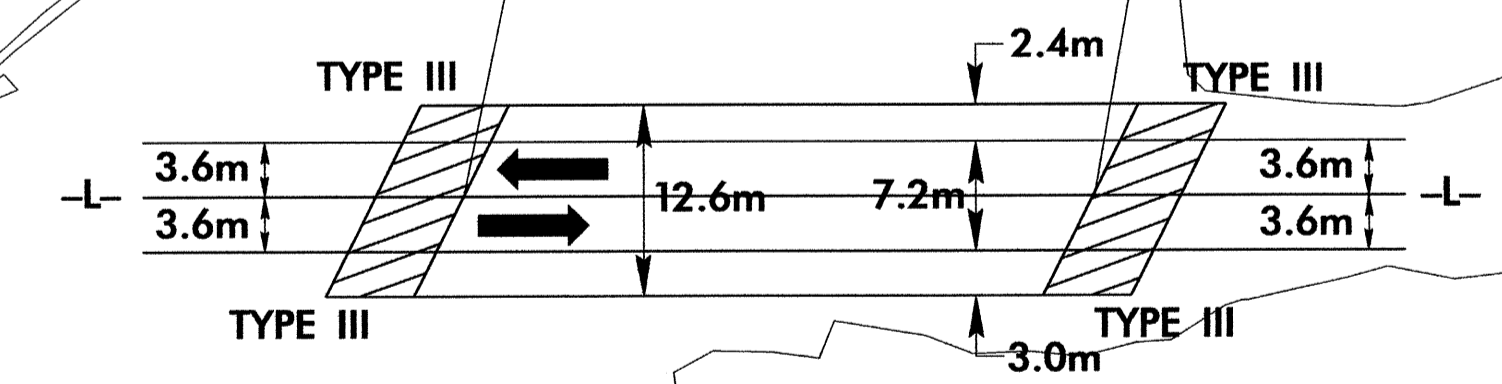
CONST.REV.

R/W REV.

PROJECT REFERENCE NO. B-1019	SHEET NO. EC-4/CONST.5
R/W SHEET NO.	
ROADWAY DESIGN ENGINEER	HYDRAULICS ENGINEER



BEGIN BRIDGE STA 14+57.800
END BRIDGE STA 15+27.000



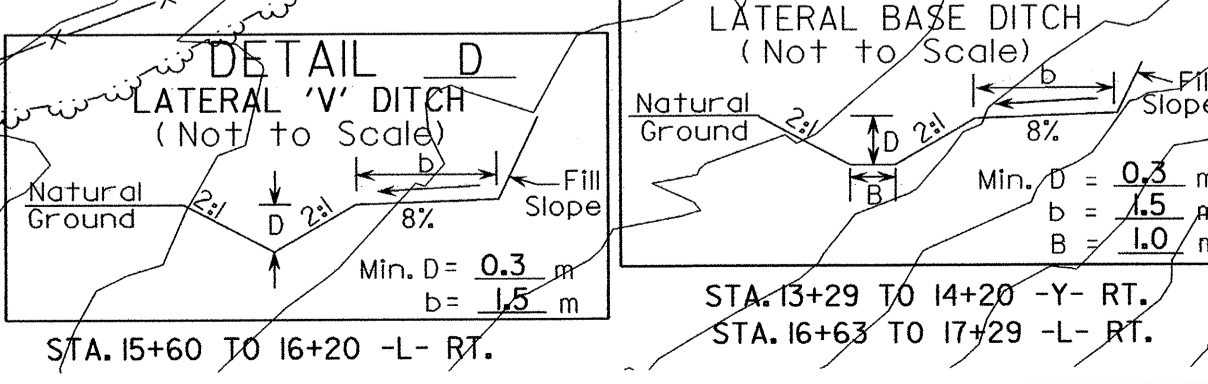
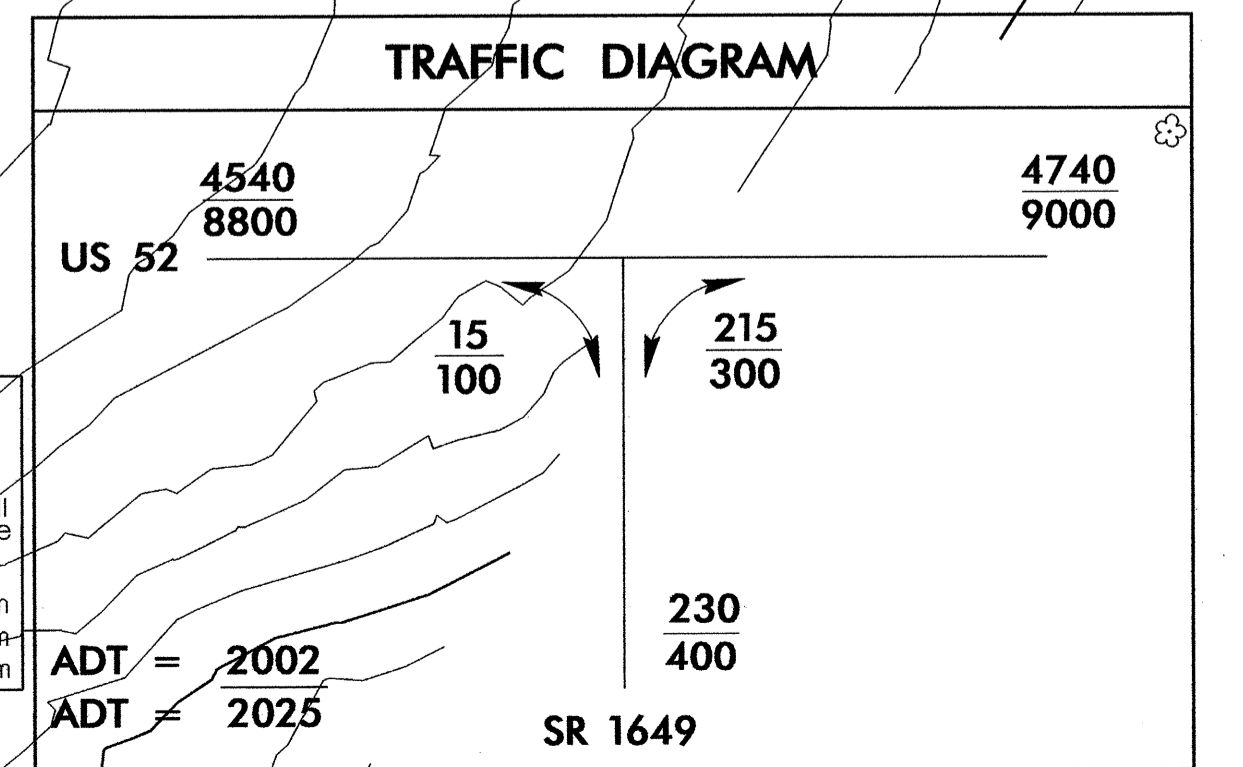
Pls Sta 13+17.082 Gs = 2° 56' 17.7"	Pls Sta 16+79.873 Δ = 60° 44' 19.09" (LT) L = 620.152 T = 342.797 R = 585.000 SE = 07	Pls Sta 19+77.234 Gs = 2° 56' 17.7"
Ls = 60.000 LT = 40.006 ST = 20.005		Ls = 60.000 LT = 40.006 ST = 20.005

PAINTED ISLAND

ASPHALT PAVEMENT REMOVAL

PI Sta 13+40.188 Δ = 35° 21' 04.8" (RT) L = 55.530 T = 28.681 R = 90.000 SE = 04 RUNOFF = 20m	PI Sta 14+07.343 Δ = 12° 33' 38.1" (LT) L = 43.845 T = 22.011 R = 200.000 SE = 05 RUNOFF = 25m
---	--

SEE SHEET 7 & 8 FOR -L- PROFILE
SEE SHEET 8 FOR -Y- PROFILE



06-MAY-2004 15:40 DB 156 PG 559