

PROJECT REFERENCE NO. B-1019	SHEET NO. EC-8/CONST.6
R/W SHEET NO.	
ROADWAY DESIGN ENGINEER	HYDRAULICS ENGINEER
CONST.REV.	
R/W REV.	

FEDERAL PAPER BOARD CO. INC.
DB 150 PG 218

END STATE PROJECT B-1019
-L- POT Sta 20+34.371

WAYMAN M. McIVER & WIFE MARTHA C. McIVER
DB 156 PG 559

5 x 2 x 1

NCGS "HAYDEN"
-L- POC 20+08.33
9.947 LT.

WAYMAN C. McIVER & WIFE MARTHA C.
DB 135 PG 412

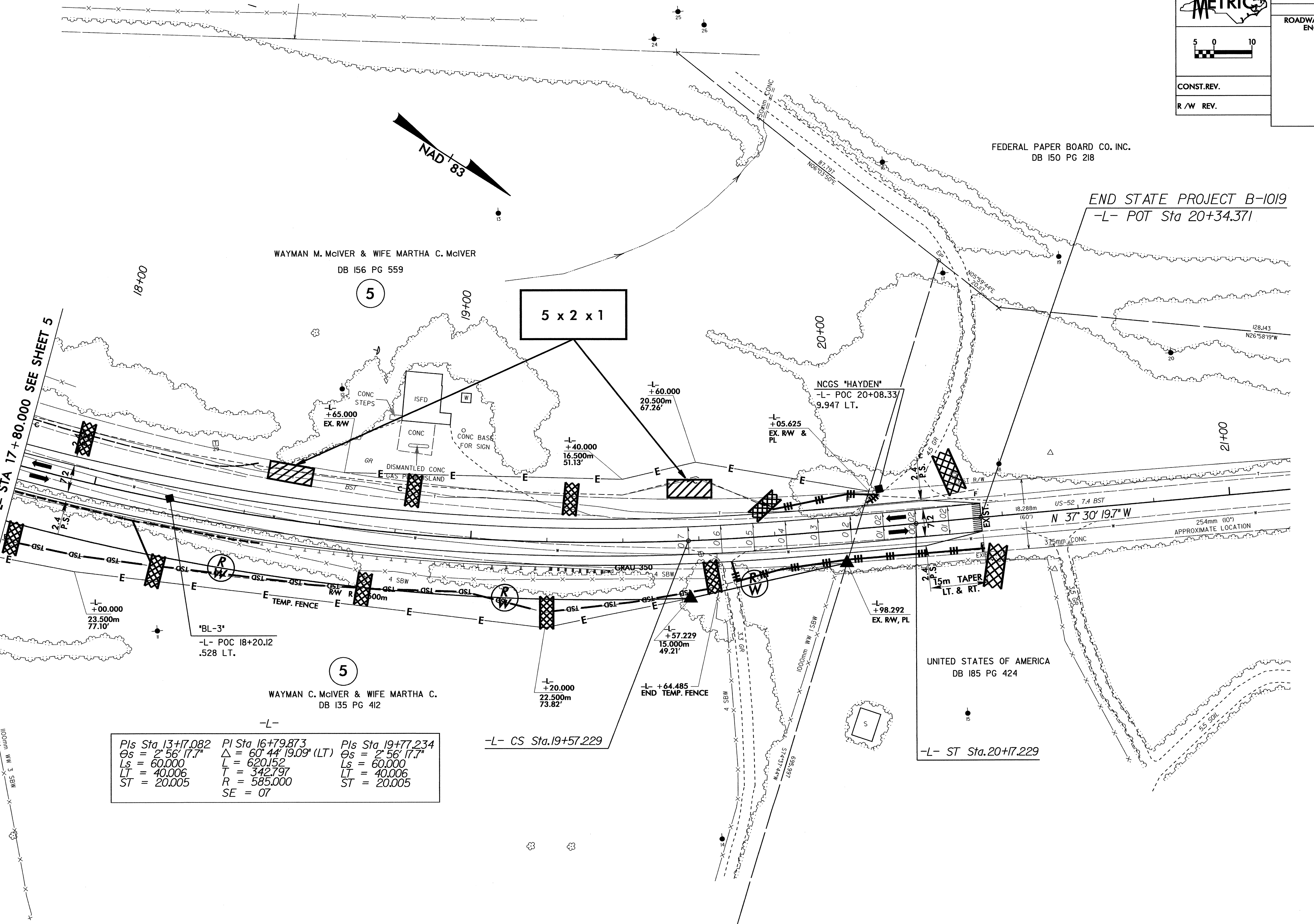
UNITED STATES OF AMERICA
DB 185 PG 424

Pls Sta 13+7.082	PI Sta 16+79.873	Pls Sta 19+77.234
$\theta_s = 2^\circ 56' 17.7''$	$\Delta = 60^\circ 44' 19.09''$ (LT)	$\theta_s = 2^\circ 56' 17.7''$
$L_s = 60.000$	$L = 620.152$	$L_s = 60.000$
$LT = 40.006$	$T = 342.797$	$LT = 40.006$
$ST = 20.005$	$R = 585.000$	$ST = 20.005$
	$SE = 07$	

-L- CS Sta. 19+57.229

-L- ST Sta. 20+17.229

MATCHLINE -L- STA 17+80.000 SEE SHEET 5



SEE SHEET 8 FOR -L- PROFILE

06-MAY-2004 16:53 1019\1019\1019\1019.dwg