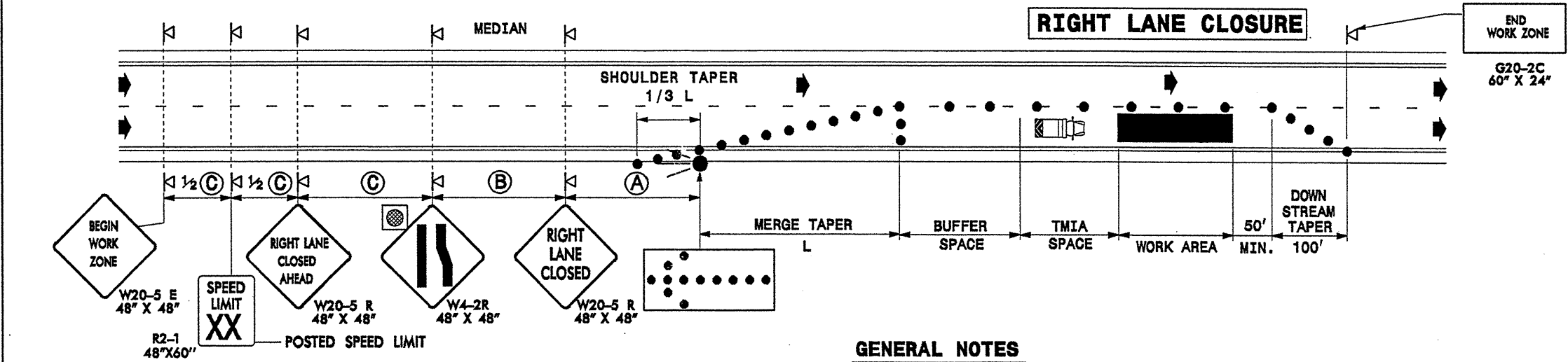
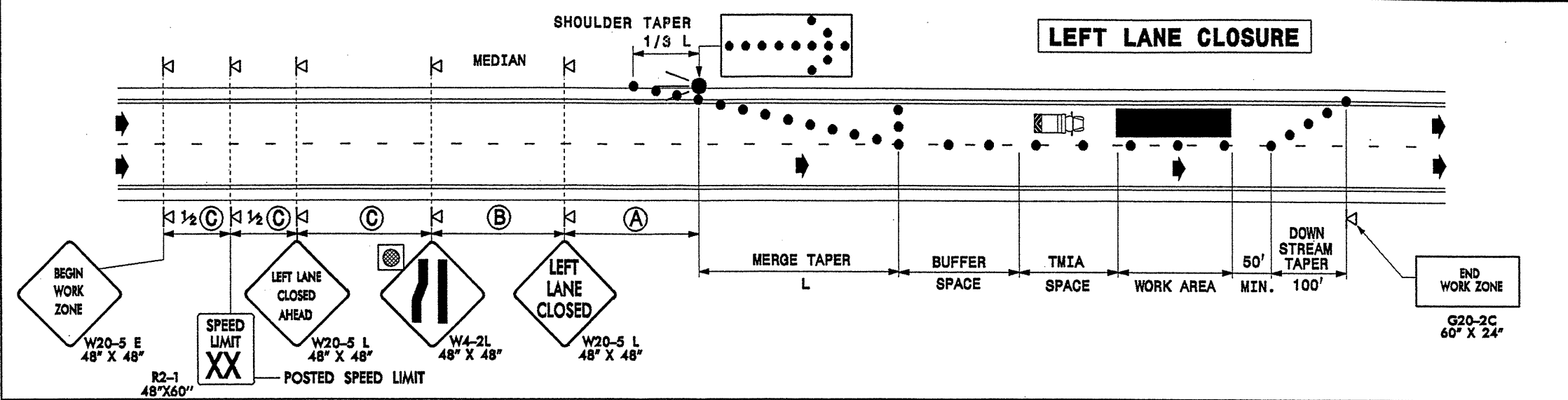


STATE OF NORTH CAROLINA  
 DEPT. OF TRANSPORTATION  
 DIVISION OF HIGHWAYS  
 RALEIGH, N.C.

ENGLISH STANDARD DRAWING FOR  
**TEMPORARY LANE CLOSURES**  
 DIVIDED MULTI-LANE ROADWAY - 1 LANE CLOSED

STATE OF NORTH CAROLINA  
 DEPT. OF TRANSPORTATION  
 DIVISION OF HIGHWAYS  
 RALEIGH, N.C.

ENGLISH STANDARD DRAWING FOR  
**TEMPORARY LANE CLOSURES**  
 DIVIDED MULTI-LANE ROADWAY - 1 LANE CLOSED



**GENERAL NOTES**

- PLACE ARROW PANELS ON THE SHOULDER (PAVED OR UNPAVED). PLACE ARROW PANELS WITHIN THE TAPER IF SHOULDERS DO NOT EXIST. MEET THE REQUIREMENTS FOR STOPPING SIGHT DISTANCE AT THE LOCATION OF THE ARROW PANEL. IF NEEDED, EXTEND LANE CLOSURES AT THE BUFFER SPACE, SUCH THAT STOPPING SIGHT DISTANCE TO THE ARROW PANEL IS MET. (SEE STD. 1101.11 -SHEET 2)
- PLACE DRUMS IN TAPERS AT THE MAXIMUM SPACING EQUAL IN FEET TO THE POSTED SPEED LIMIT. PLACE DRUMS ALONG THE BUFFER SPACE AND WORK AREA AT THE MAXIMUM SPACING EQUAL IN FEET TO 2 TIMES THE POSTED SPEED LIMIT.
- REFER TO STD. 1101.11 -SHEETS 1 & 4, FOR "L" DISTANCE AND SIGN SPACING.
- REFER TO SHEETS NUMBERS TCP-5 AND TCP-6 FOR TREATMENT OF LANE CLOSURES THRU INTERCHANGES.
- PORTRAY A SPEED 10 MPH LESS THAN THE POSTED SPEED LIMIT ON ADVISORY SPEED PANELS (XX MPH, SIGN W13-1), UNLESS A LOWER SPEED IS DETERMINED NECESSARY BY THE ENGINEER.
- INSTALL LANE CLOSURES WITH THE TRAFFIC FLOW, BEGINNING WITH DEVICES ON THE UPSTREAM SIDE OF TRAFFIC. REMOVE LANE CLOSURES AGAINST THE TRAFFIC FLOW, BEGINNING WITH DEVICES ON THE DOWNSTREAM SIDE OF TRAFFIC.
- TMIA'S ARE REQUIRED ONLY WHEN A BUFFER SPACE CANNOT BE ATTAINED, OR WHEN DIRECTED BY THE ENGINEER OR THE PLANS. WHEN USED, POSITION THE TMIA TO MAINTAIN A ROLL-AHEAD DISTANCE AS RECOMMENDED BY THEIR MANUFACTURER.

**LEGEND**

- FLASHING ARROW PANEL (TYPE C)
- ▣ TRUCK MOUNTED IMPACT ATTENUATOR(TMIA)
- DRUM
- ▽ PORTABLE SIGN
- ⊙ TYPE B WARNING LIGHT (FOR NIGHT USE)
- ➔ DIRECTION OF TRAFFIC FLOW

SHEET 3 OF 7  
 1101.02

SHEET 3 OF 7  
 1101.02

APPROVED: *[Signature]* DATE: 5-16-04

**TEMPORARY LANE CLOSURES**

SCALE: NONE  
 DATE: 04/04  
 DWG. BY: SJP  
 DESIGN BY: KAK  
 REVIEWED BY: REG

SEAL: *[Professional Engineer Seal: E. GREENE, No. 14894, State of North Carolina]*

REVISIONS

\*\*\*\*\*SYTIME\*\*\*\*\*  
 \*\*\*\*\*DGN\*\*\*\*\*  
 \*\*\*\*\*SERNAME\*\*\*\*\*