

STATE OF
NORTH CAROLINA
DEPT. OF TRANSPORTATION
DIVISION OF HIGHWAYS
RALEIGH, N.C.

ENGLISH STANDARD DRAWING FOR
TEMPORARY SHOULDER CLOSURES

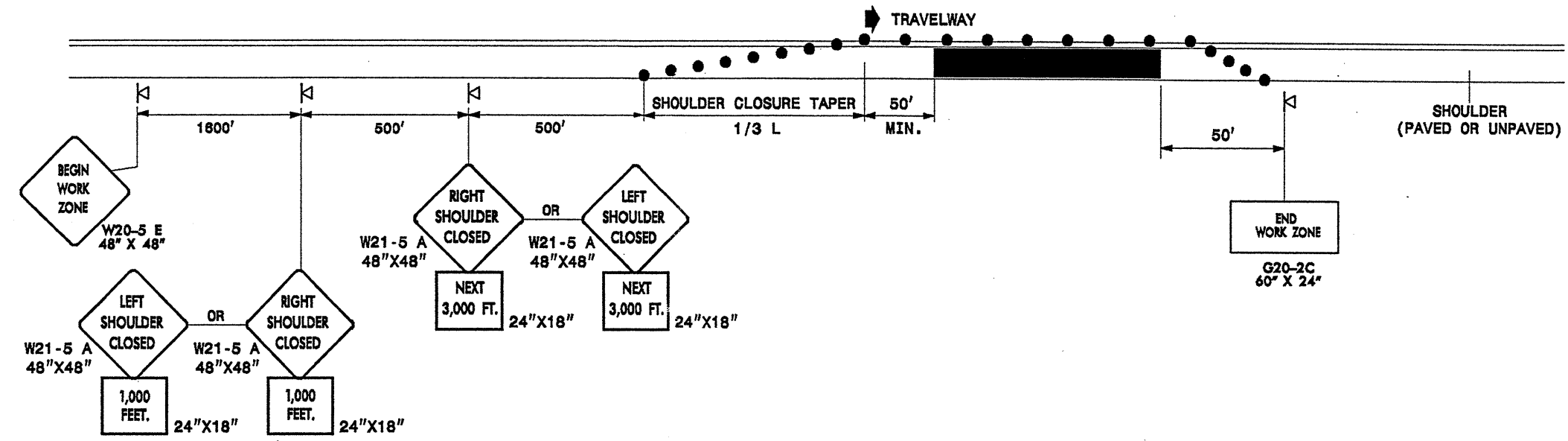
SHEET 1 OF 1
1101.04

STATE OF
NORTH CAROLINA
DEPT. OF TRANSPORTATION
DIVISION OF HIGHWAYS
RALEIGH, N.C.

ENGLISH STANDARD DRAWING FOR
TEMPORARY SHOULDER CLOSURES

SHEET 1 OF 1
1101.04

SHOULDER CLOSURES UTILIZING DRUMS



GENERAL NOTES

- PLACE SHOULDER CLOSED SIGNS ON THE SAME SIDE AS THE SHOULDER THAT IS CLOSED.
- PLACE DRUMS IN THE SHOULDER TAPER AT THE MAXIMUM SPACING EQUAL IN FEET TO THE POSTED SPEED LIMIT. THE MAXIMUM SPACING OF DRUMS ALONG THE WORK AREA IS EQUAL IN FEET TO 2 TIMES THE POSTED SPEED LIMIT.
- REFER TO STD. 1101.11 SHEET 1 FOR "L" DISTANCE.

LEGEND

- DRUM
- ▽ PORTABLE SIGN
- ➔ DIRECTION OF TRAFFIC FLOW

APPROVED: *REG* DATE: 5-18-04



TEMPORARY SHOULDER CLOSURES

SCALE: NONE
DATE: 04/04
DWG. BY: SJP
DESIGN BY: KAK
REVIEWED BY: REG



NO.	REVISIONS

\$\$\$\$\$SYTIME\$\$\$\$\$
\$\$\$\$\$SDGN\$\$\$\$\$
\$\$\$\$\$USERNAME\$\$\$\$\$