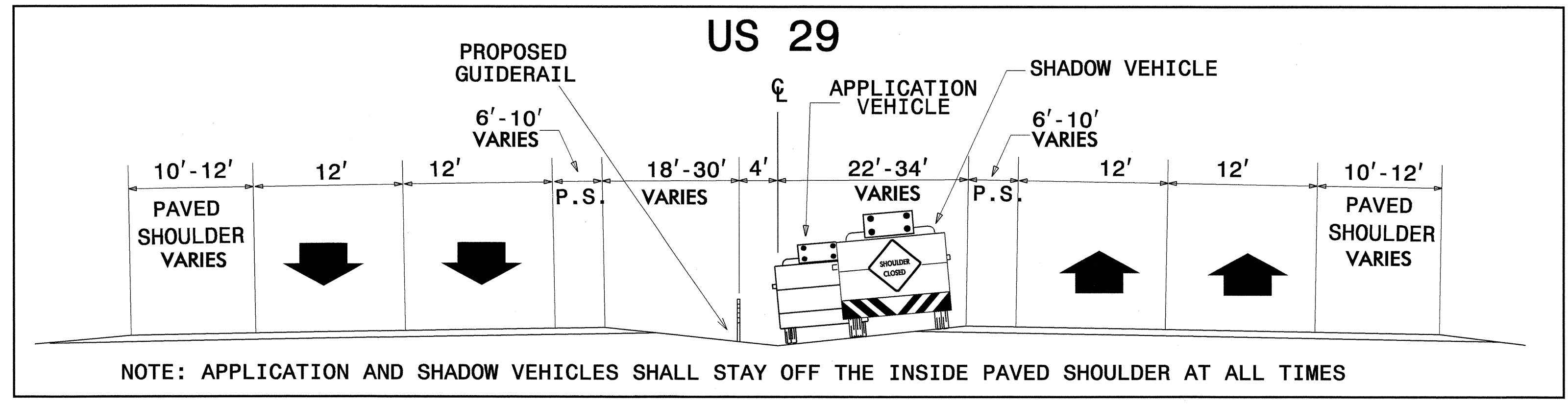
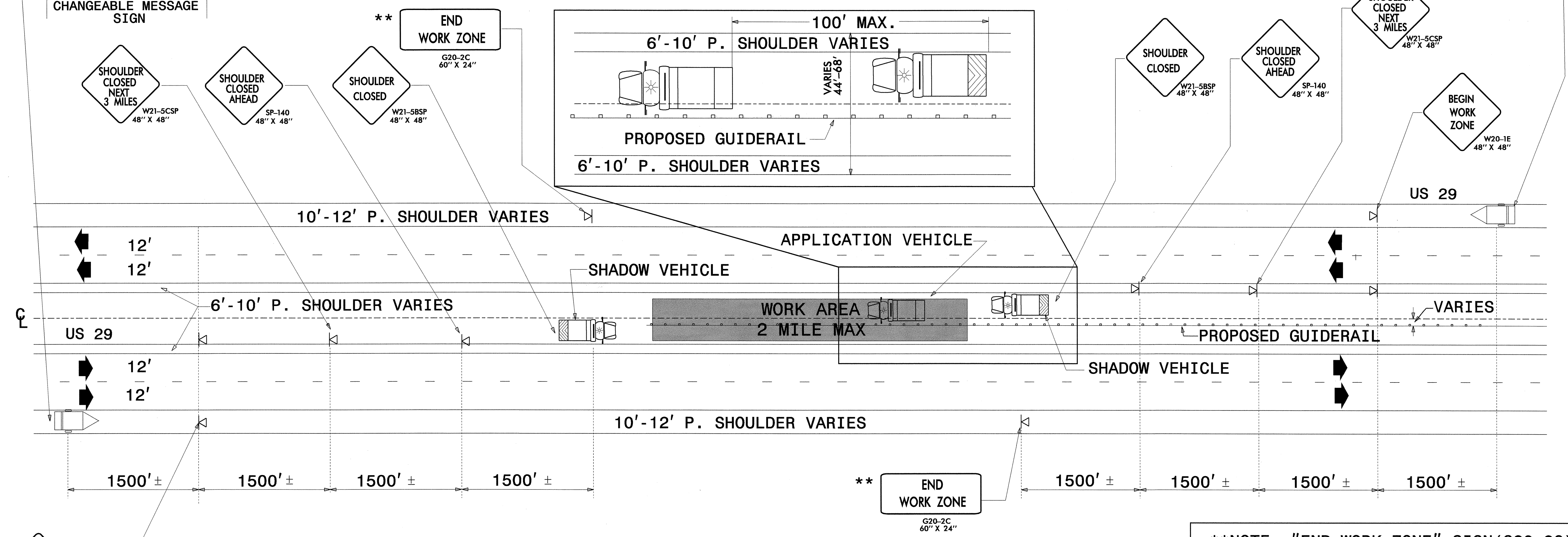


*** IF THE OPERATION OCCURS WITHIN 10' OR LESS FROM THE EDGE OF TRAVEL. ROADWAY STANDARD DRAWING 1101.02 SHEET 3 OF 7 SHALL BE USED.**



MESSAGE NO. 1	MESSAGE NO. 2
CAUTION	MEDIAN WORK AHEAD
CHANGEABLE MESSAGE SIGN	

MESSAGE NO. 1	MESSAGE NO. 2
CAUTION	MEDIAN WORK AHEAD
CHANGEABLE MESSAGE SIGN	



NOTES :

- ALL TRAFFIC CONTROL DEVICES, INCLUDING SHADOW VEHICLES AND SIGNS SHALL BE REMOVED WHEN WORK IS NOT BEING PERFORMED IN THE MEDIAN.
- MOUNT WORK ZONE WARNING SIGNS ON PORTABLE MOUNTS ACCORDING TO GENERAL NOTE J. (SEE SHEET TCP-2)
- APPLICATION AND SHADOW VEHICLES SHALL HAVE FLASHING ARROW PANELS DISPLAYING THE 4 CORNER CAUTION MODE AND SHALL USE LIGHT BARS OR ROTATING BEACON

****NOTE: "END WORK ZONE" SIGN (G20-2C) SHALL BE LOCATED 500' FROM END OF WORK AREA**

APPROVED: <i>[Signature]</i> DATE: 8/15/01	TRAFFIC CONTROL DETAIL -A-	
	SCALE: NONE	
	DATE: JUL. 2001	
	DWG. BY: JPS	
	DESIGN BY: JPS	
REVIEWED BY: CLM/SK	REVISIONS	