

5/14/99

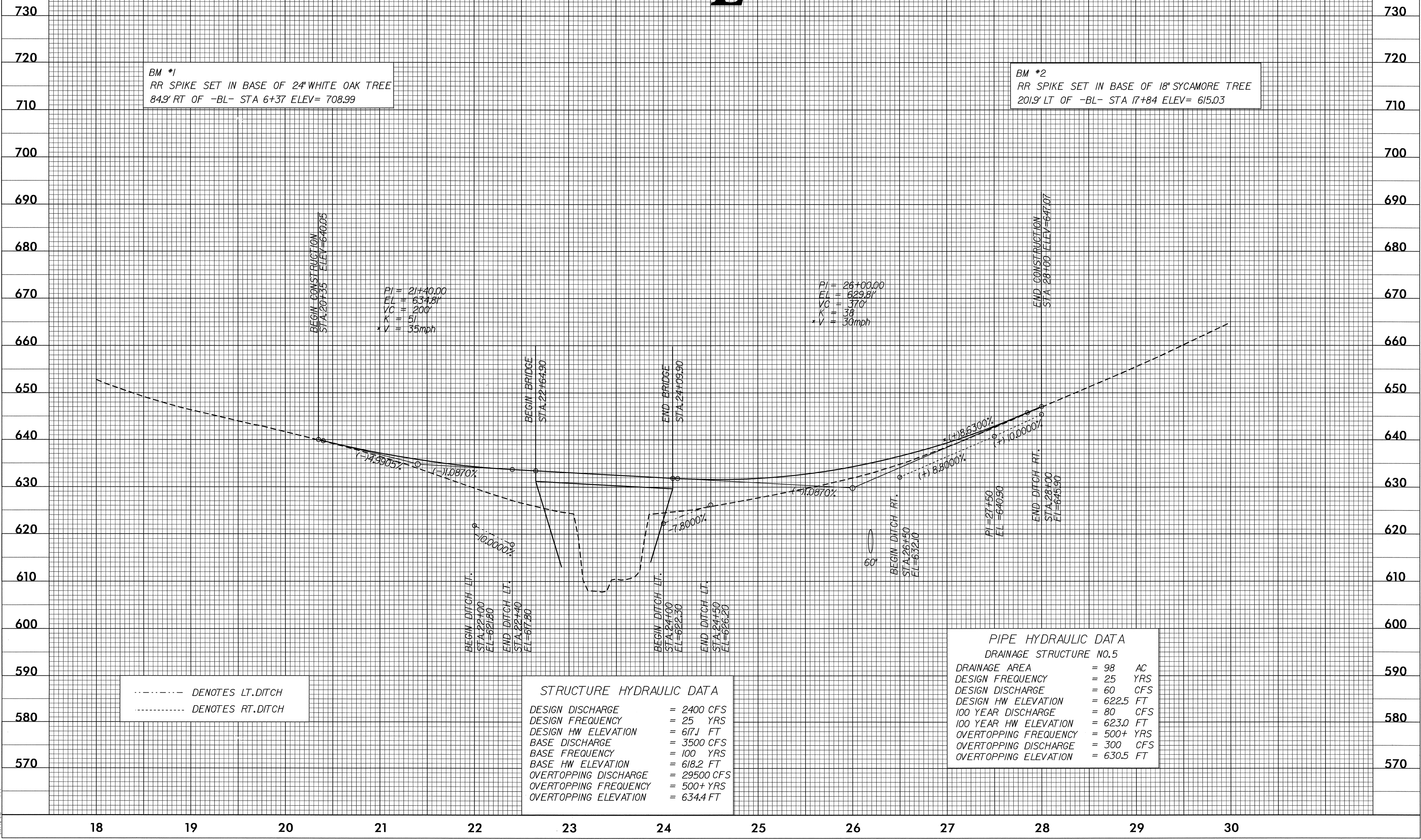
Note: DESIGN EXCEPTION REQUIRED FOR MAXIMUM GRADE SAG VERTICAL CURVE AND VERTICAL SSD

PROJECT REFERENCE NO. B-3901	SHEET NO. 5
ROADWAY DESIGN ENGINEER NORTH CAROLINA PROFESSIONAL SEAL 19795 BRENDA L. WOOD	HYDRAULICS ENGINEER NORTH CAROLINA PROFESSIONAL SEAL 16600 RANDALL C. HENEGAR
B.R. Moore	R.C. Henegar

-L-

BM \*1  
RR SPIKE SET IN BASE OF 24" WHITE OAK TREE  
84.9' RT OF -BL- STA 6+37 ELEV= 708.99

BM \*2  
RR SPIKE SET IN BASE OF 18" SYCAMORE TREE  
20.9' LT OF -BL- STA 17+84 ELEV= 615.03



----- DENOTES LT. DITCH  
----- DENOTES RT. DITCH

STRUCTURE HYDRAULIC DATA

DESIGN DISCHARGE	= 2400 CFS
DESIGN FREQUENCY	= 25 YRS
DESIGN HW ELEVATION	= 617.1 FT
BASE DISCHARGE	= 3500 CFS
BASE FREQUENCY	= 100 YRS
BASE HW ELEVATION	= 618.2 FT
OVERTOPPING DISCHARGE	= 29500 CFS
OVERTOPPING FREQUENCY	= 500+ YRS
OVERTOPPING ELEVATION	= 634.4 FT

PIPE HYDRAULIC DATA  
DRAINAGE STRUCTURE NO.5

DRAINAGE AREA	= 98 AC
DESIGN FREQUENCY	= 25 YRS
DESIGN DISCHARGE	= 60 CFS
DESIGN HW ELEVATION	= 622.5 FT
100 YEAR DISCHARGE	= 80 CFS
100 YEAR HW ELEVATION	= 623.0 FT
OVERTOPPING FREQUENCY	= 500+ YRS
OVERTOPPING DISCHARGE	= 300 CFS
OVERTOPPING ELEVATION	= 630.5 FT

09-JUL-2004 15:11  
H:\PROJECTS\B3901\RDY\_PFL.DGN  
BRENDA L. WOOD