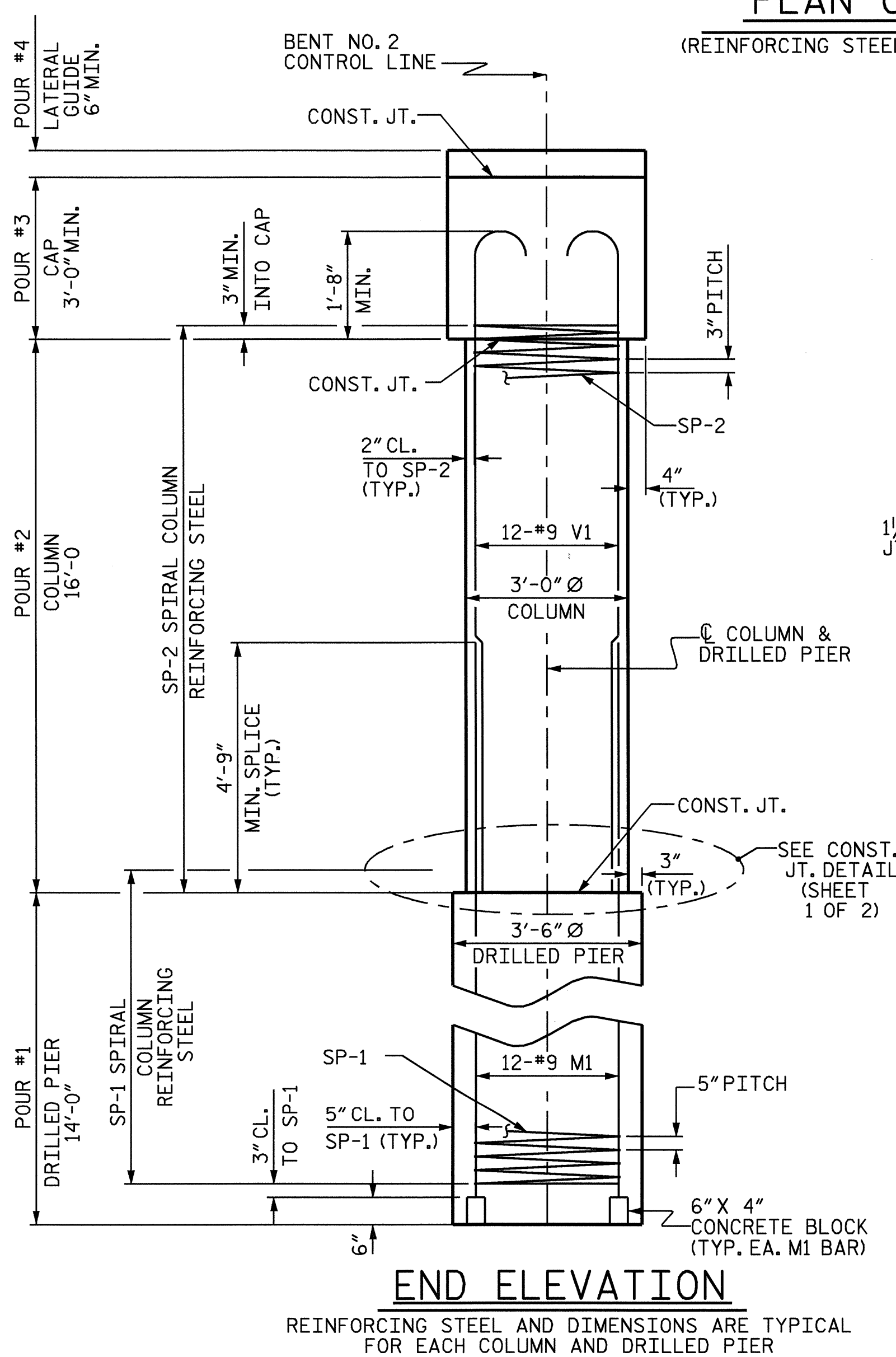
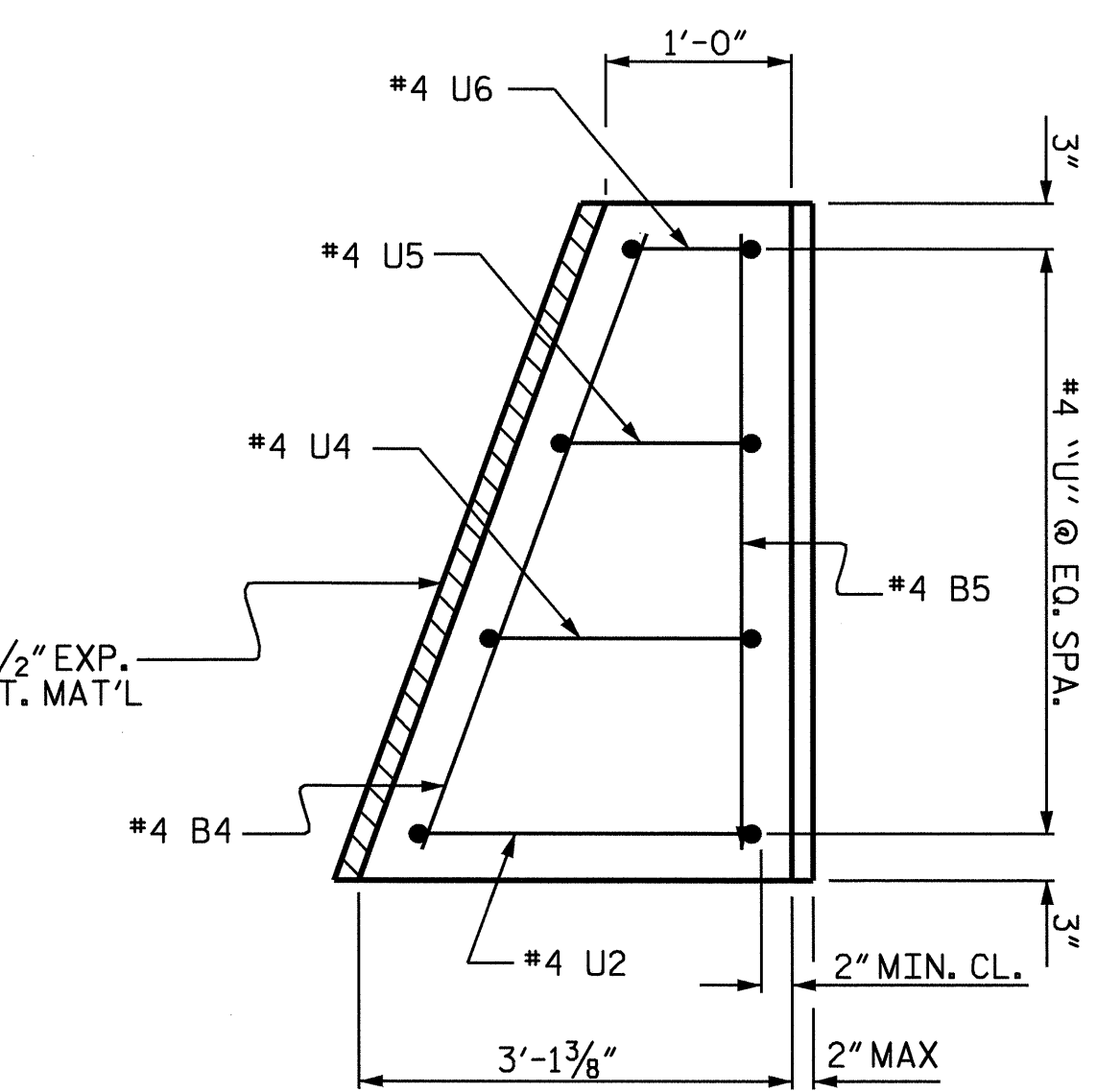


PLAN OF DRILLED PIERS & COLUMNS
(REINFORCING STEEL AND DIMENSIONS ARE TYPICAL FOR EACH COLUMN & DRILLED PIER)

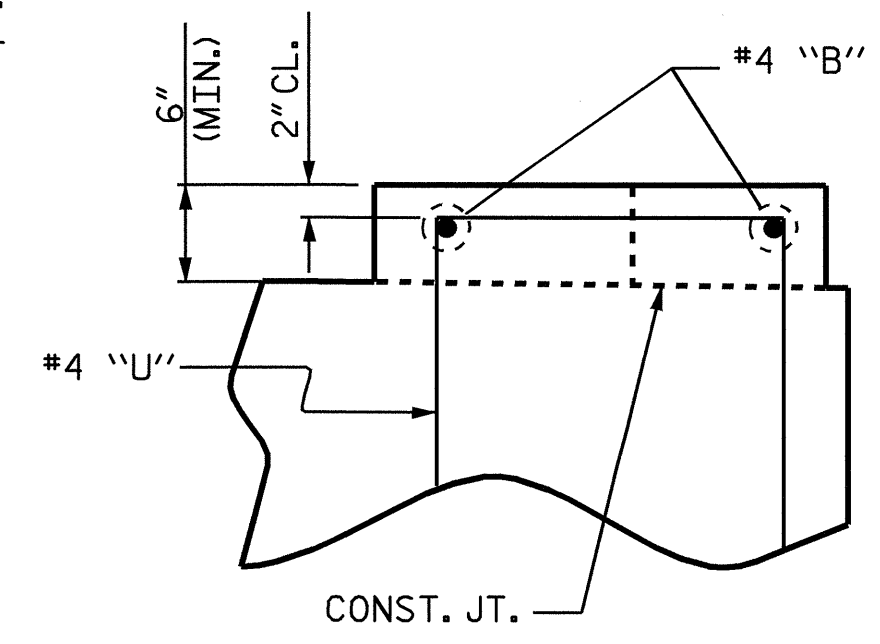


END ELEVATION

REINFORCING STEEL AND DIMENSIONS ARE TYPICAL FOR EACH COLUMN AND DRILLED PIER



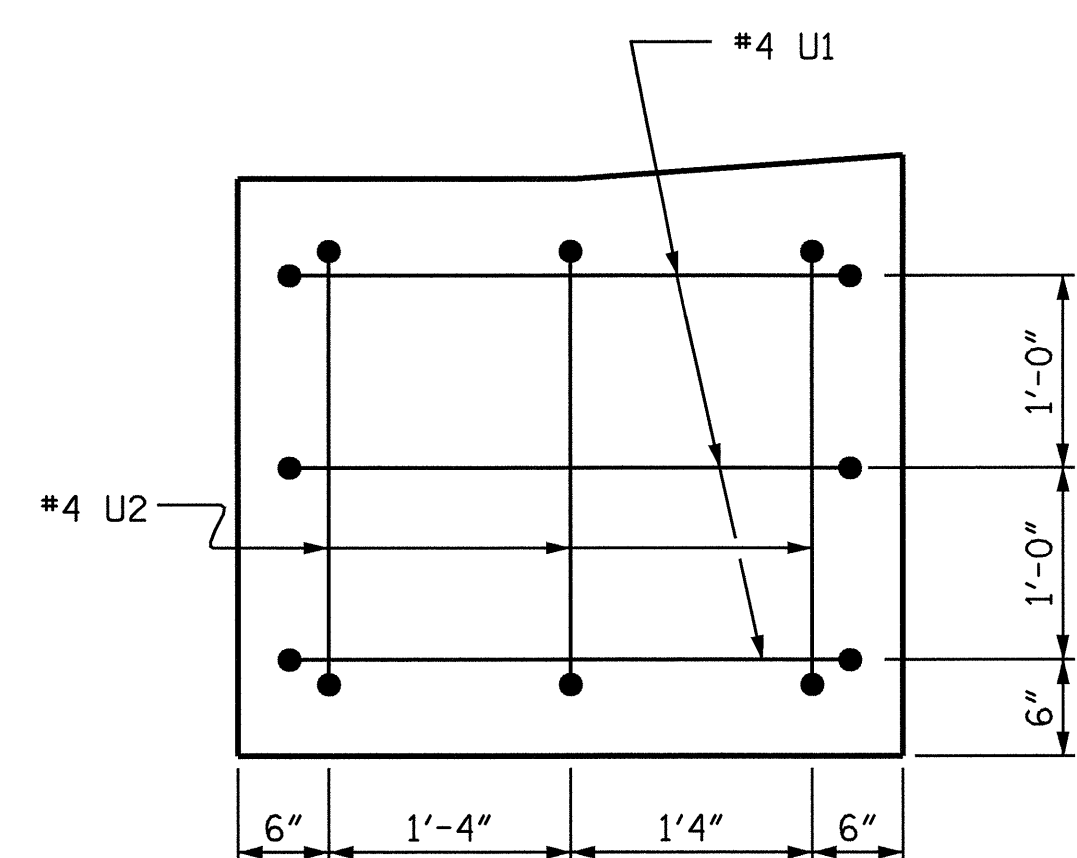
PLAN



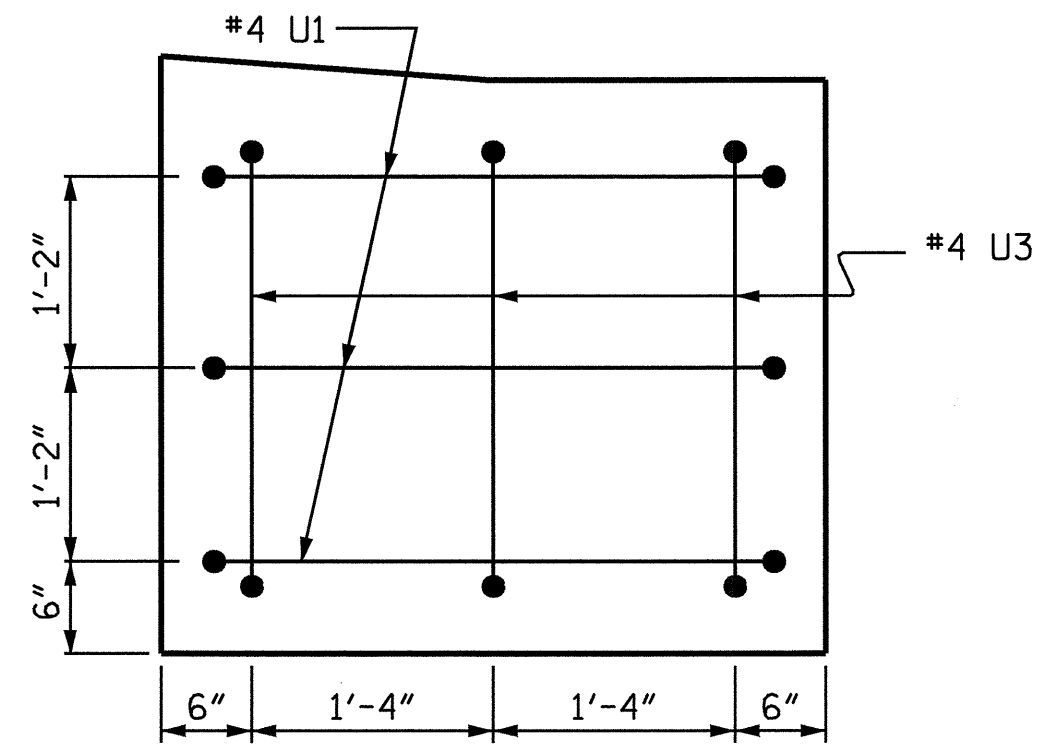
ELEVATION

LATERAL GUIDE DETAIL

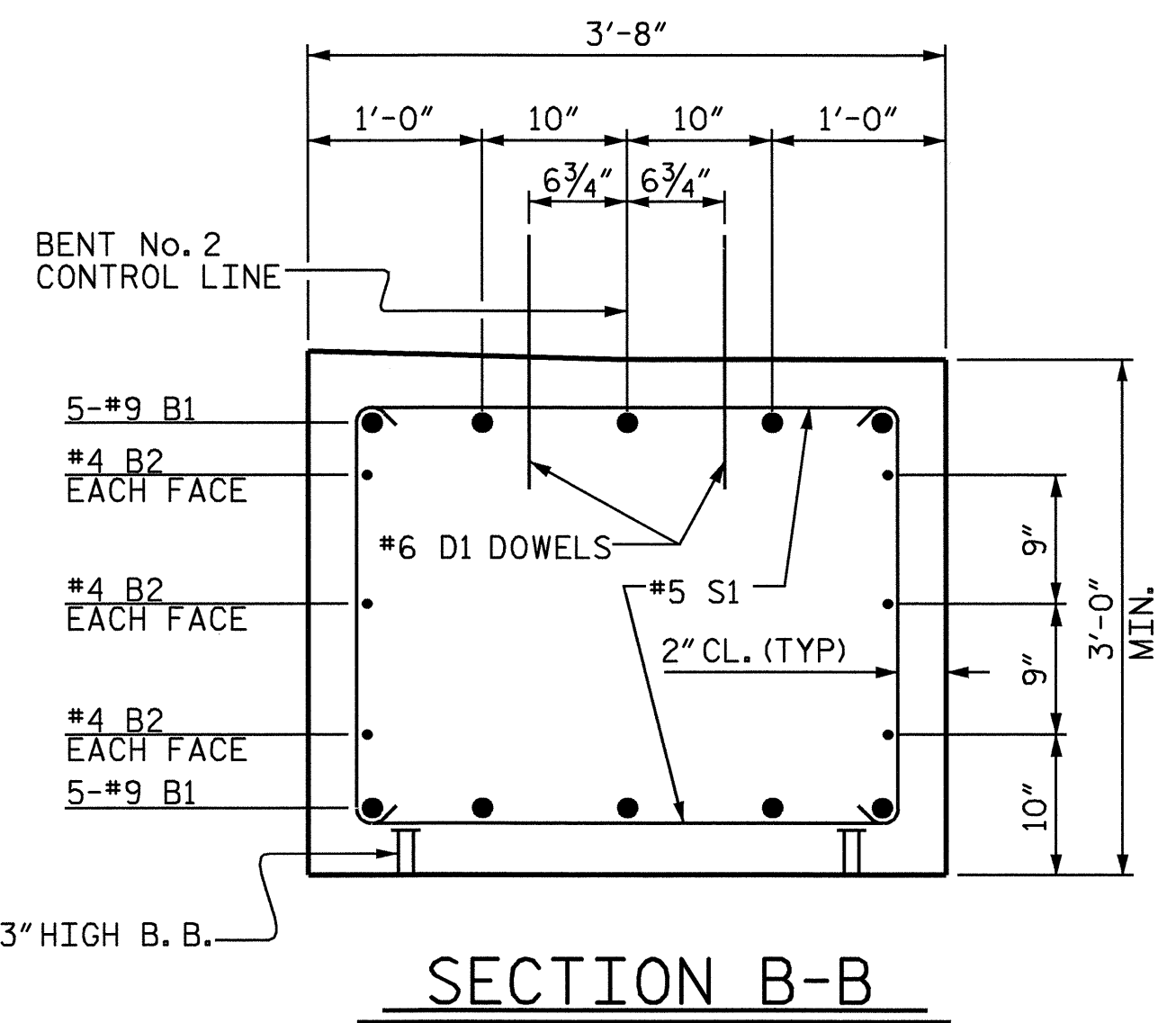
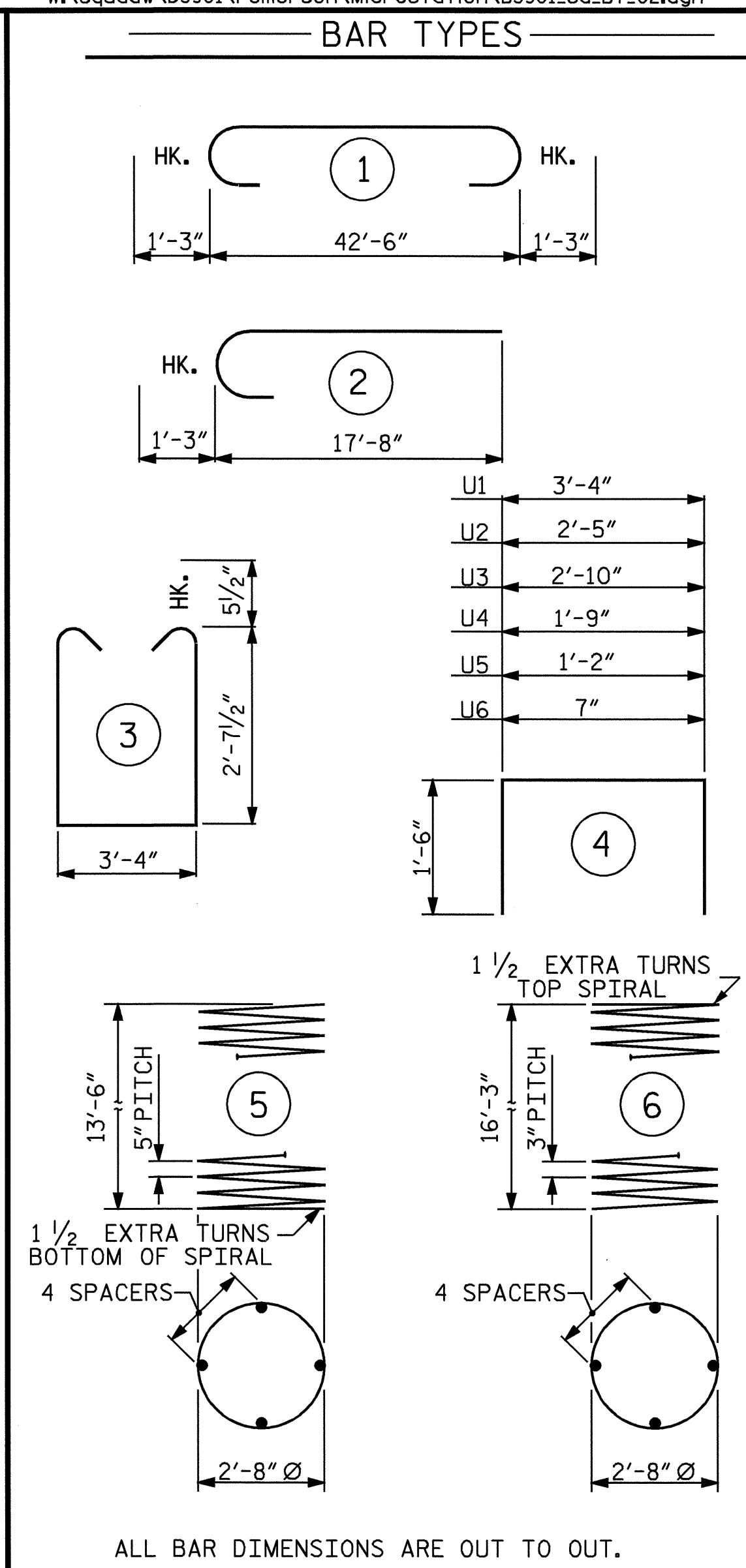
(RIGHT LATERAL GUIDE SHOWN, LEFT SIDE SIMILAR)



VIEW X-X



VIEW Y-Y



SECTION B-B



BILL OF MATERIAL					
BENT NO. 2					
BAR NO.	SIZE	TYPE	LENGTH	WEIGHT	
B1	10	9	1	45'-0"	1530
B2	12	4	STR	22'-7"	181
B3	5	4	STR	23'-7"	79
B4	2	4	STR	3'-10"	5
B5	2	4	STR	3'-4"	4
D1	44	6	STR	1'-6"	99
S1	36	5	3	9'-6"	357
M1	36	9	STR	21'-3"	2601
U1	22	4	4	6'-4"	93
U2	5	4	4	5'-5"	18
U3	3	4	4	5'-10"	12
U4	2	4	4	4'-9"	6
U5	2	4	4	4'-2"	6
U6	2	4	4	3'-7"	5
V1	36	9	2	18'-11"	2315
REINFORCING STEEL			LBS. 7311		
SP-1	3	*	5	279'-8"	875
SP-2	3	**	6	552'-9"	1108
SPIRAL COLUMN REINFORCING STEEL			LBS. 1983		
** THE SP-2 SPIRAL REINFORCING STEEL SHALL BE W20 OR D-20 COLD DRAWN WIRE OR #4 PLAIN OR DEFORMED BAR.					
* THE SP-1 SPIRAL REINFORCING STEEL SHALL BE W31 OR D-31 COLD DRAWN WIRE OR #5 PLAIN OR DEFORMED BAR.					
THE CONTRACTOR'S ATTENTION IS CALLED TO THE FACT THAT THE LONGITUDINAL REINFORCEMENT FOR THE DRILLED PIERS IS DETAILED WITH 3 FEET OF EXTRA LENGTH.					
CLASS A CONCRETE BREAKDOWN:					
POUR #2 (COLUMNS)				12.6 C. Y.	
POUR #3 (CAP)				19.2 C. Y.	
POUR #4 (LATERAL GUIDES)				0.3 C. Y.	
TOTAL				32.1 C. Y.	
DRILLED PIERS:					
DRILLED PIER CONCRETE					
POUR #1 (DRILLED PIERS)				15.0 C. Y.	
3'-6" Ø DRILLED PIER NOT IN SOIL				27.00 LIN. FT.	
3'-6" Ø DRILLED PIER IN SOIL				15.00 LIN. FT.	
PERMANENT STEEL CASING FOR 3'-6" Ø DRILLED PIER				17.80 LIN. FT.	
CSL TUBES				198.00 LIN. FT.	

PROJECT NO. B-3901
ROCKINGHAM COUNTY
 STATION: 23+37.40 -L-
 SHEET 2 OF 2

STATE OF NORTH CAROLINA DEPARTMENT OF TRANSPORTATION RALEIGH					
SUBSTRUCTURE BENT No. 2					
REVISIONS					
NO.	BY:	DATE:	NO.	BY:	DATE:
1			3		
2			4		
					SHEET NO. S-15
					TOTAL SHEETS 22