

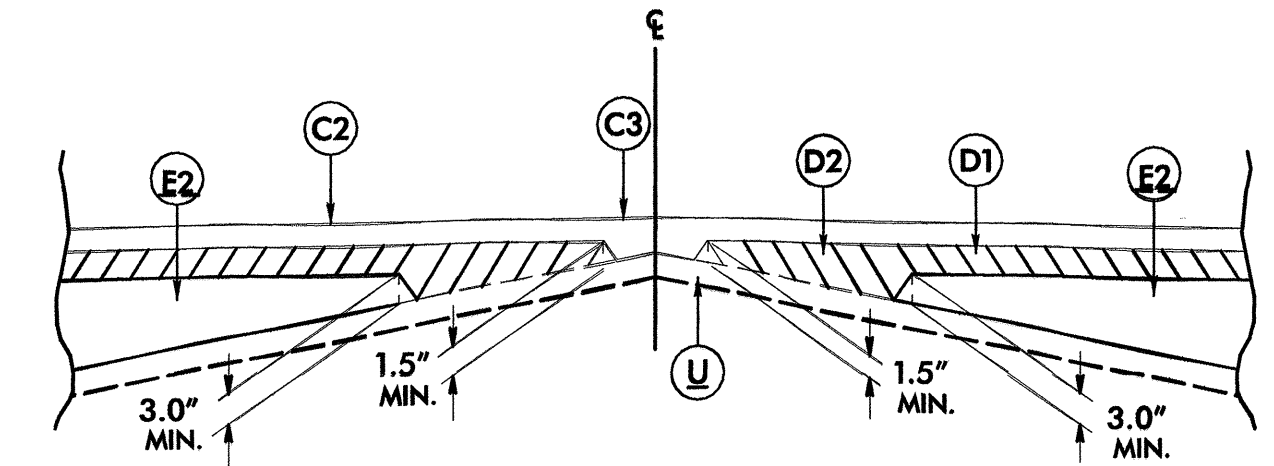
5/28/99

REVISIONS

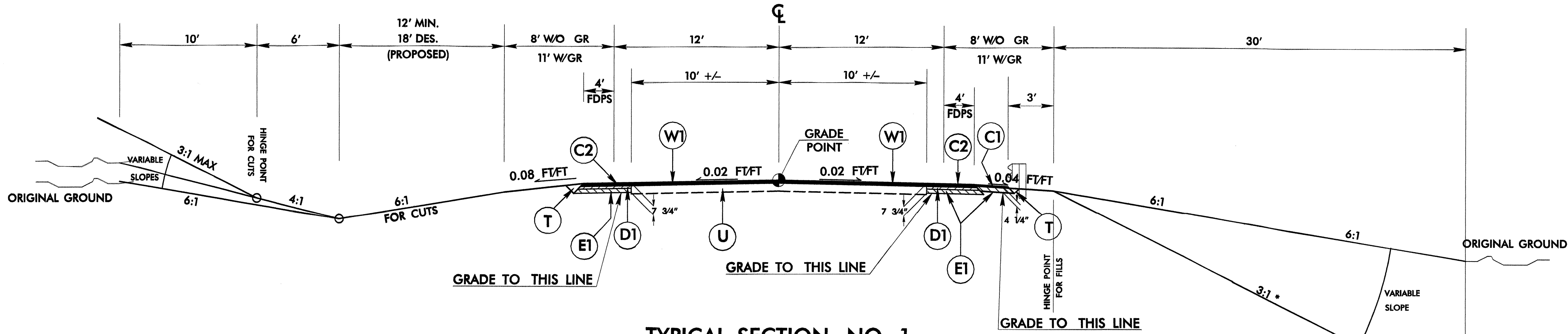
PAVEMENT SCHEDULE

C1	PROP. APPROX. 1 1/4" ASPHALT CONCRETE SURFACE COURSE, TYPE S9.5B, AT AN AVERAGE RATE OF 140 LBS. PER SQ. YD.	E2	PROP. VARIABLE DEPTH ASPHALT CONCRETE BASE COURSE, TYPE B25.0B, AT AN AVERAGE RATE OF 114 LBS. PER SQ. YD. PER 1" DEPTH, TO BE PLACED IN LAYERS NOT LESS THAN 3" AND NO GREATER THAN 5 1/2" IN DEPTH.
C2	PROP. APPROX. 2 1/2" ASPHALT CONCRETE SURFACE COURSE, TYPE S9.5B, AT AN AVERAGE RATE OF 140 LBS. PER SQ. YD. IN EACH OF TWO LAYERS.	U	EXISTING PAVEMENT.
C3	PROP. VARIABLE DEPTH ASPHALT CONCRETE SURFACE COURSE, TYPE S9.5B, AT AN AVERAGE RATE OF 112 LBS. PER SQ. YD. PER 1" DEPTH PLACED IN LAYERS NOT TO EXCEED 1 1/2"	T	EARTH MATERIAL.
D1	PROP. APPROX. 2 1/4" ASPHALT CONCRETE INTERMEDIATE COURSE, TYPE I19.0B, AT AN AVERAGE RATE OF 256.5 LBS. PER SQ. YD.	W1	VARIABLE DEPTH ASPHALT PAVEMENT (SEE WEDGING DETAIL)
D2	PROP. VARIABLE DEPTH ASPHALT CONCRETE INTERMEDIATE COURSE, TYPE I19.0B, AT AN AVERAGE RATE OF 114 LBS. PER SQ. YD PER 1" DEPTH PLACED IN LAYERS NOT LESS THAN 1 1/2" AND GREATER THAN 3".		
E1	PROP. APPROX. 3" ASPHALT CONCRETE BASE COURSE, TYPE B25.0B, AT AN AVERAGE RATE OF 342 LBS. PER SQ. YD.		

NOTE: PAVEMENT SLOPES ARE 1:1 UNLESS OTHERWISE NOTED



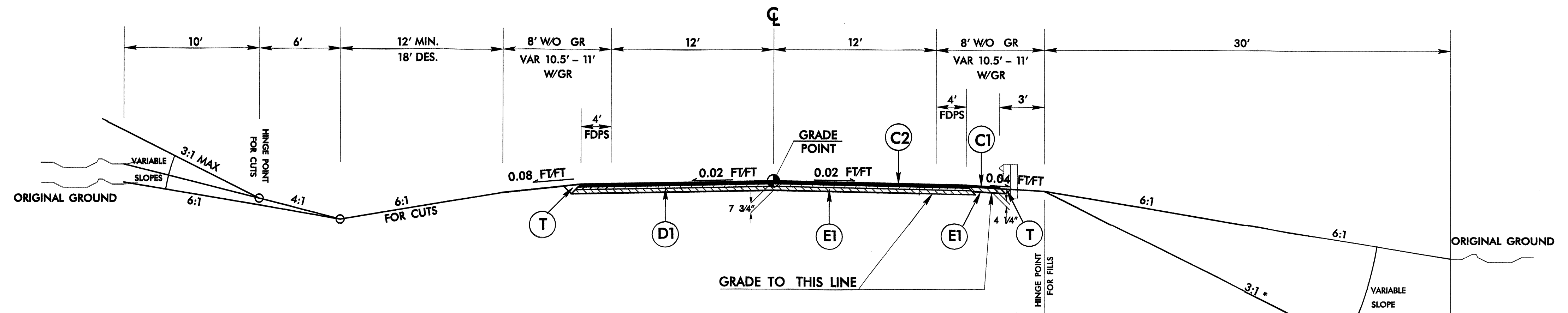
Detail Showing Method of Wedging (W1)



TYPICAL SECTION NO. 1

USE TYPICAL SECTION NO. 1 AS FOLLOWS:
 -L- STATION 10+22.27 TO 13+99
 -L- STATION 15+88.50 TO 20+26.98
 TRANSITION FROM EXISTING TO T.S. NO.1 9+72.27 TO 10+22.27
 TRANSITION FROM T.S. NO.1 TO EXISTING 20+26.98 TO 20+76.98

* 2:1 SLOPES TO BE USED IN AREAS OF ENVIRONMENTAL IMPACTS (SEE CROSS SECTION)



TYPICAL SECTION NO. 2

USE TYPICAL SECTION NO. 2 AS FOLLOWS:
 -L- STATION 13+99 TO 14+24 (BEGIN BRIDGE)
 -L- 15+51.5 (END BRIDGE) TO 15+88.50

* 2:1 SLOPES TO BE USED IN AREAS OF ENVIRONMENTAL IMPACTS (SEE CROSS SECTION)

PROJECT REFERENCE NO. B-3884	SHEET NO. 2
RW SHEET NO.	
ROADWAY DESIGN ENGINEER THOMAS R. HEPLER SEAL 102583 5/22/03	PAVEMENT DESIGN ENGINEER CLARK S. MORRISON SEAL 22886 5/21/03

***** TIME *****
 ***** DATE *****
 ***** BY *****
 ***** FOR *****

\\p01cct5\WOOD\1\3884\B3884.dwg 05/22/2003 08:56:56 AM