

8/17/99

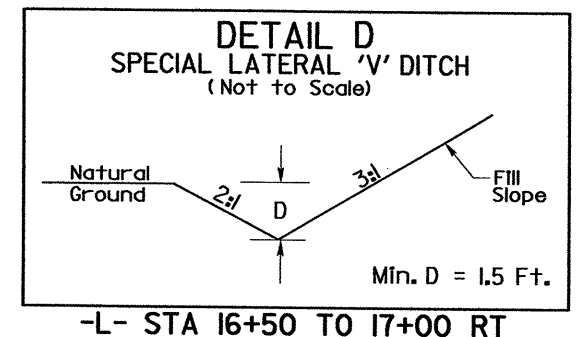
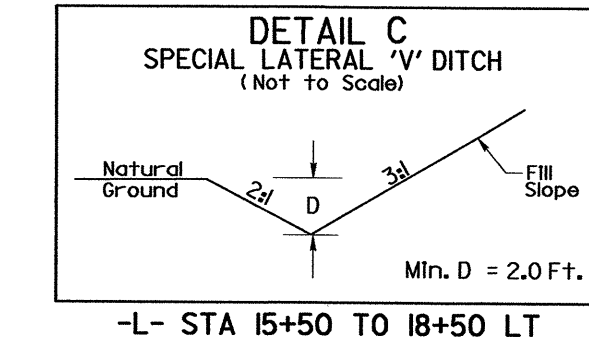
DATUM DESCRIPTION

THE LOCALIZED COORDINATE SYSTEM DEVELOPED FOR THIS PROJECT IS BASED ON THE STATE PLANE COORDINATES ESTABLISHED BY NC DOT FOR MONUMENT "B3884-2" WITH NAD 1983/95 STATE PLANE GRID COORDINATES OF NORTHING: 418514088(11) EASTING: 2439360630(11) THE AVERAGE COMBINED GRID FACTOR USED ON THIS PROJECT (GROUND TO GRID) IS: 0.999898083 THE N.C. LAMBERT GRID BEARING AND LOCALIZED HORIZONTAL GROUND DISTANCE FROM "B3884-2" TO -L- STATION 9+72.27 IS S 54°34'49.6" E 752.16' ALL LINEAR DIMENSIONS ARE LOCALIZED HORIZONTAL DISTANCES VERTICAL DATUM USED IS NAVD 88

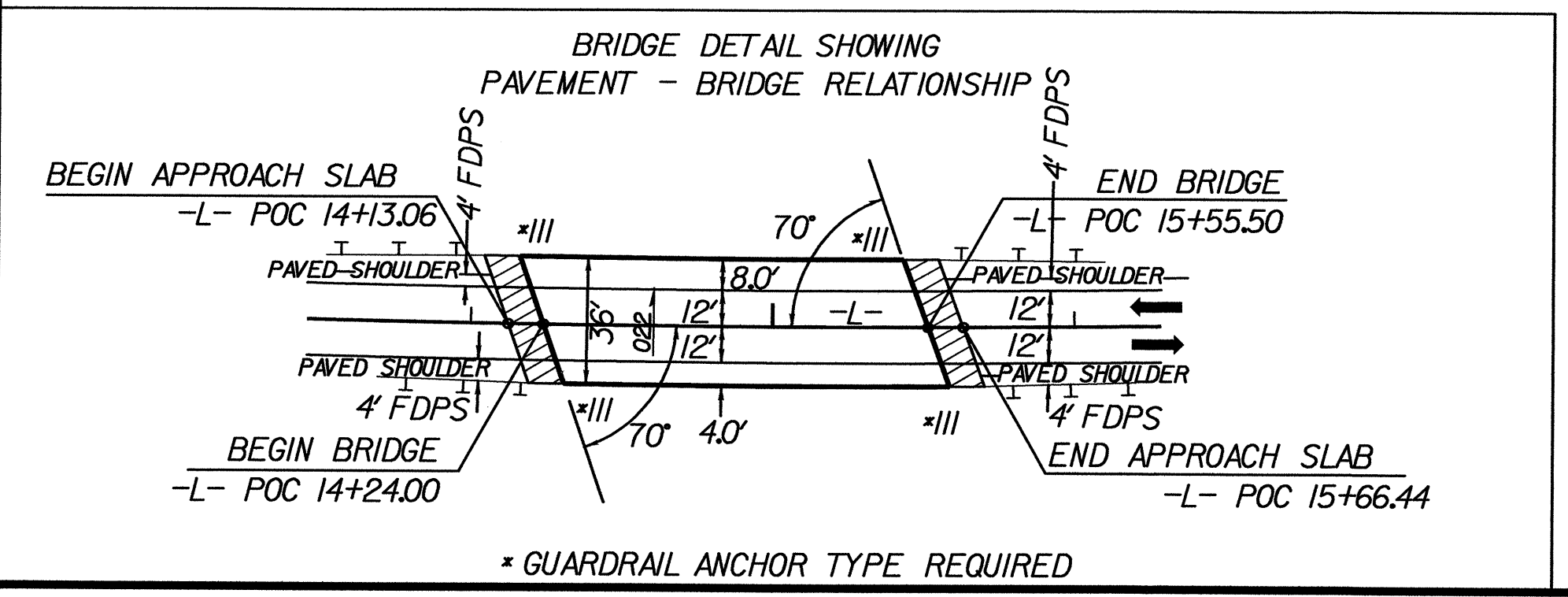
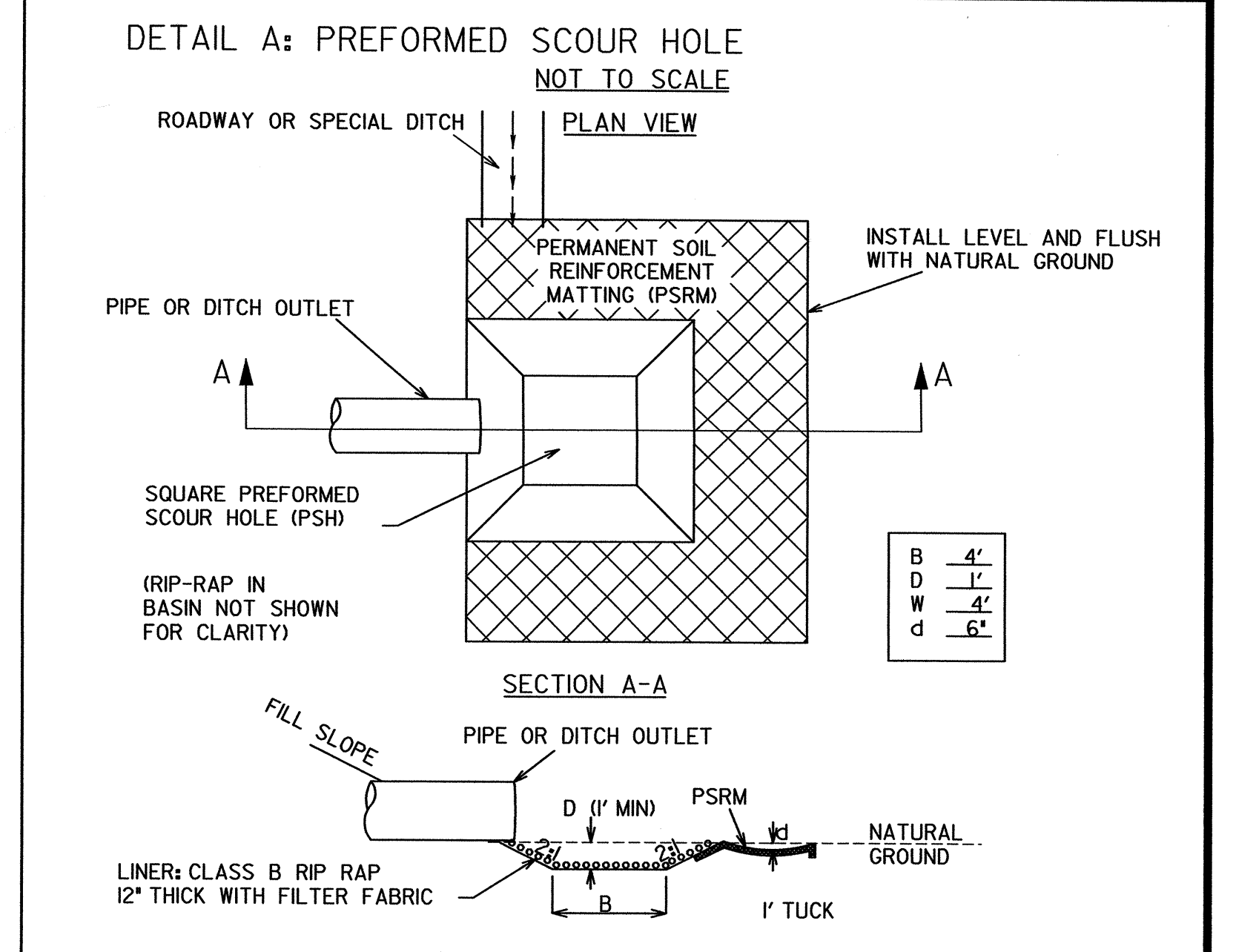
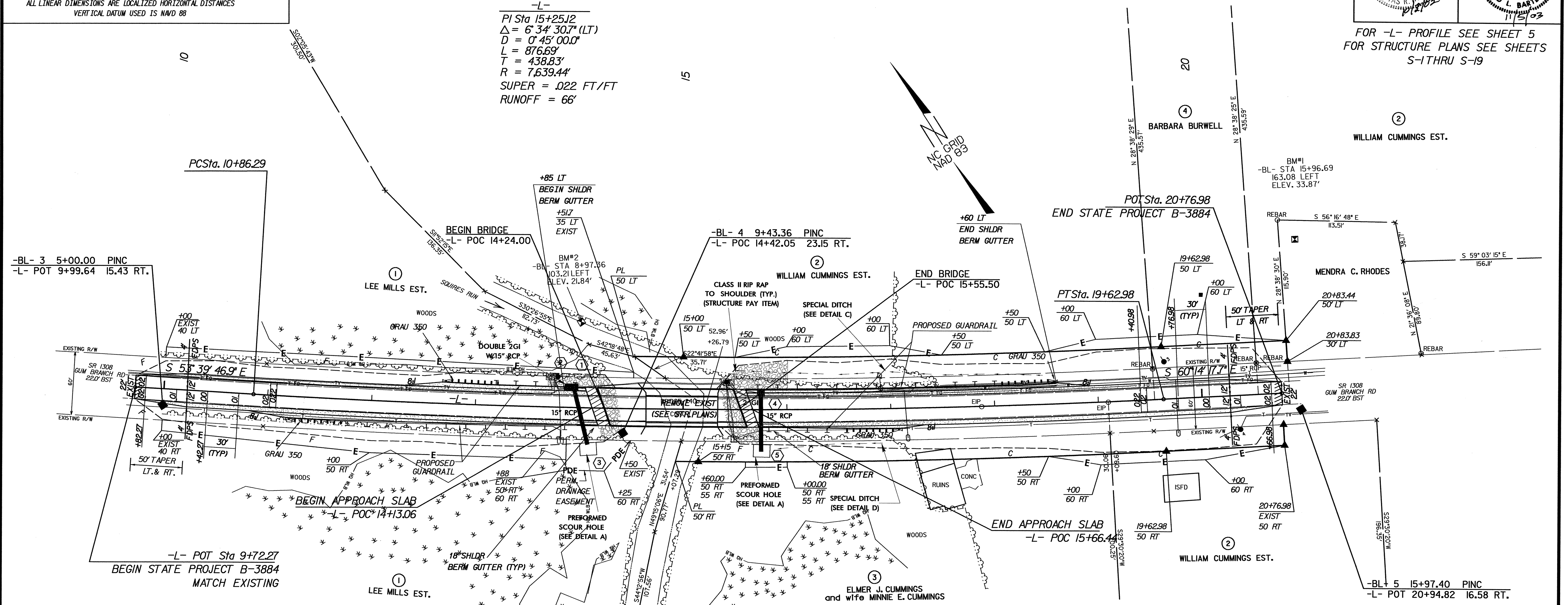
PROJECT REFERENCE NO. B-3884	SHEET NO. 4
RW SHEET NO.	
ROADWAY DESIGN ENGINEER NORTH CAROLINA PROFESSIONAL ENGINEER 10859 TOMAS R. HEPLER	HYDRAULICS ENGINEER NORTH CAROLINA PROFESSIONAL ENGINEER 14455 TOD L. BARTLEY

FOR -L- PROFILE SEE SHEET 5
FOR STRUCTURE PLANS SEE SHEETS S-1 THRU S-19

-L-
PI Sta 15+25.12
 $\Delta = 6' 34" 30.7" (LT)$
 $D = 0' 45" 00.0"$
 $L = 876.69'$
 $T = 438.83'$
 $R = 7,639.44'$
SUPER = .022 FT/FT
RUNOFF = 66'



REVISIONS



* GUARDRAIL ANCHOR TYPE REQUIRED

10/01/2003 08:46:10 AM