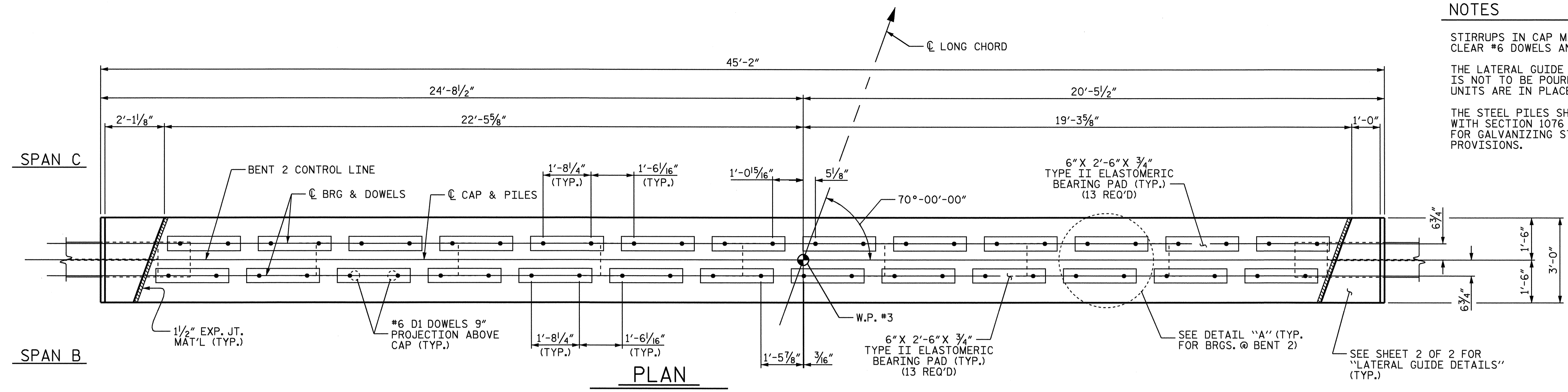


NOTES

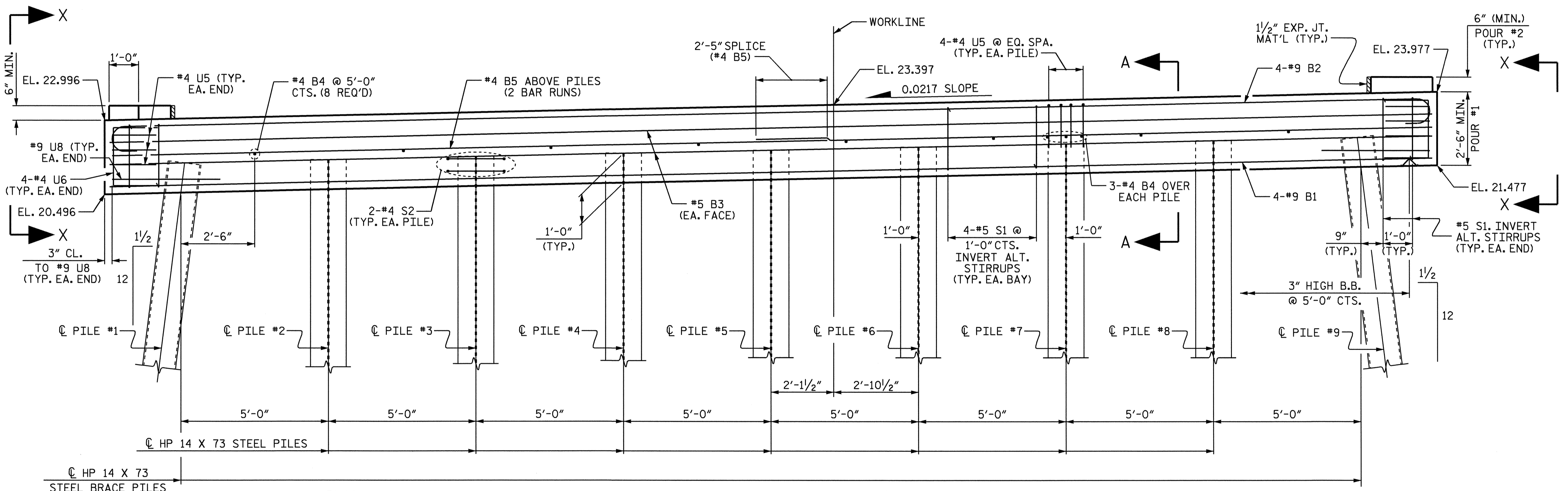
STIRRUPS IN CAP MAY BE SHIFTED AS NECESSARY TO CLEAR #6 DOWELS AND REINFORCING STEEL.

THE LATERAL GUIDE AT EACH END OF THE CORED SLAB IS NOT TO BE POURED UNTIL AFTER THE CORED SLAB UNITS ARE IN PLACE.

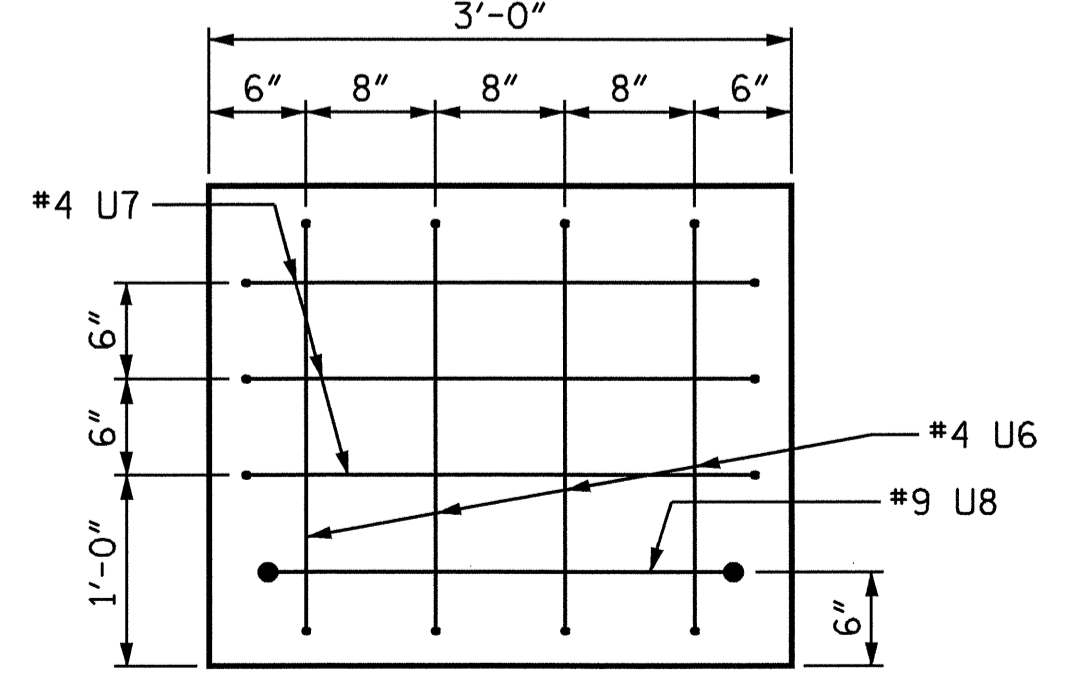
THE STEEL PILES SHALL BE GALVANIZED IN ACCORDANCE WITH SECTION 1076 OF THE STANDARD SPECIFICATIONS. FOR GALVANIZING STEEL PILES, SEE SPECIAL PROVISIONS.



PLAN



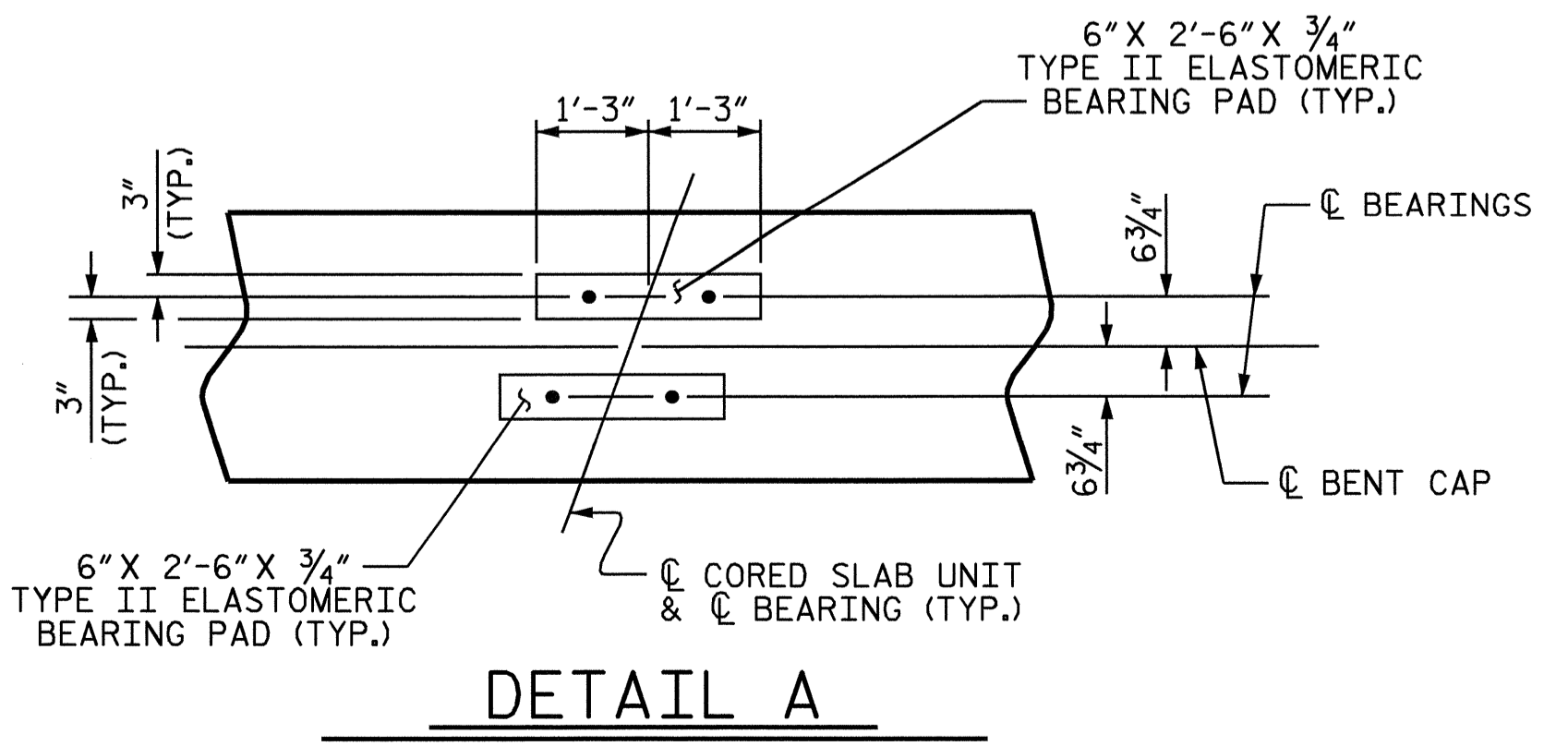
ELEVATION



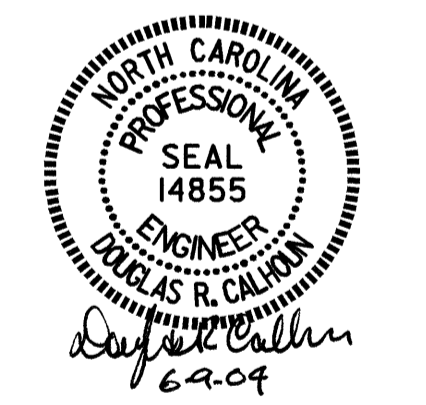
VIEW X-X

SHOWING REINFORCING STEEL AT THE END OF THE CAP

TOP OF PILE ELEVATIONS	
PILE NO.	ELEVATION
1	21.552
2	21.661
3	21.770
4	21.878
5	21.986
6	22.095
7	22.203
8	22.312
9	22.421



DETAIL A



PROJECT NO. B-3884
ON SLOW COUNTY
 STATION: 14+89.75 -L-

SHEET 1 OF 2

STATE OF NORTH CAROLINA
 DEPARTMENT OF TRANSPORTATION
 RALEIGH

SUBSTRUCTURE BENT 2

REVISIONS						SHEET NO.	
NO.	BY:	DATE:	NO.	BY:	DATE:	S-15	
1			3			TOTAL SHEETS	
2			4			23	

DRAWN BY : T. A. HARRIS DATE : 4/28/03
 CHECKED BY : K. MCCAULEY DATE : 4/30/03