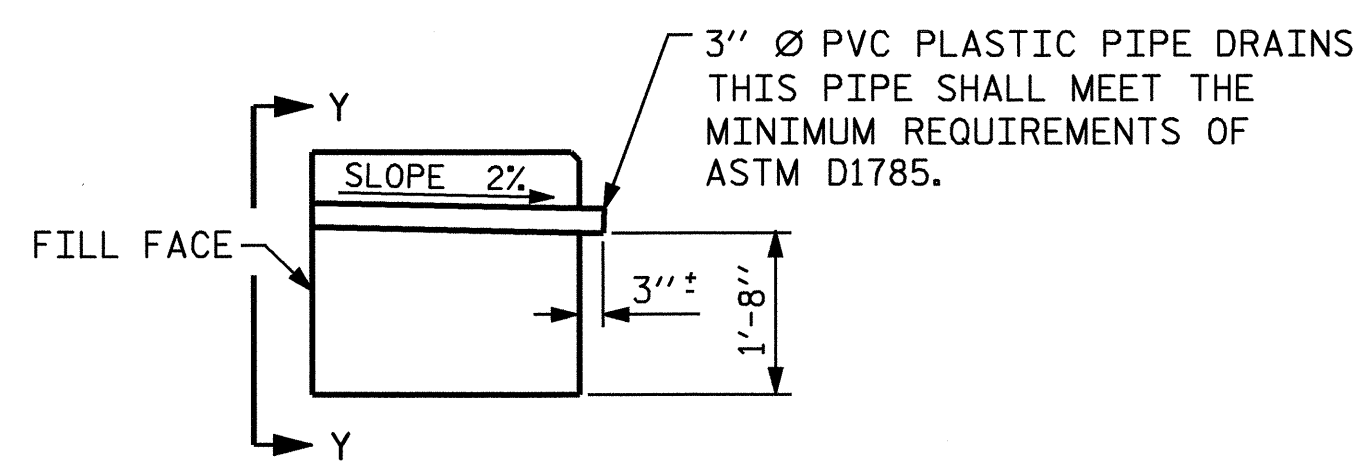


BAGGED STONE AND PIPE SHALL BE PLACED IMMEDIATELY AFTER COMPLETION OF END BENT EXCAVATION. PIPE MAY BE EITHER CONCRETE, CORRUGATED STEEL, CORRUGATED ALUMINUM ALLOY, OR CORRUGATED PLASTIC. PERFORATED PIPE WILL NOT BE ALLOWED.

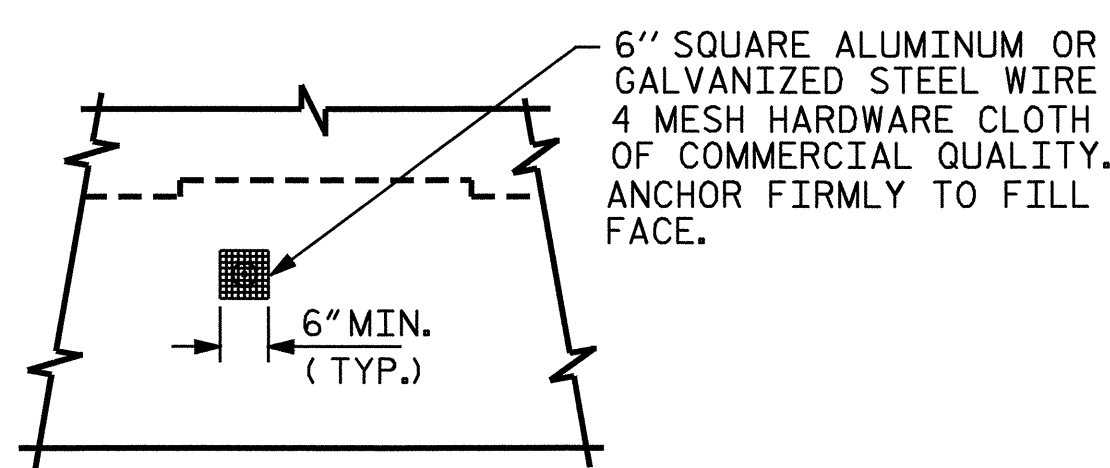
BAGGED STONE SHALL REMAIN IN PLACE UNTIL THE ENGINEER DIRECTS THAT IT BE REMOVED. THE CONTRACTOR SHALL REMOVE AND DISPOSE OF SILT ACCUMULATIONS AT BAGGED STONE WHEN SO DIRECTED BY THE ENGINEER. BAGS SHALL BE REMOVED AND REPLACED WHENEVER THE ENGINEER DETERMINES THAT THEY HAVE DETERIORATED AND LOST THEIR EFFECTIVENESS.

NO SEPARATE PAYMENT WILL BE MADE FOR THIS WORK AND THE ENTIRE COST OF THIS WORK SHALL BE INCLUDED IN THE UNIT CONTRACT PRICE BID FOR THE SEVERAL PAY ITEMS.

**TEMPORARY DRAINAGE AT END BENT**



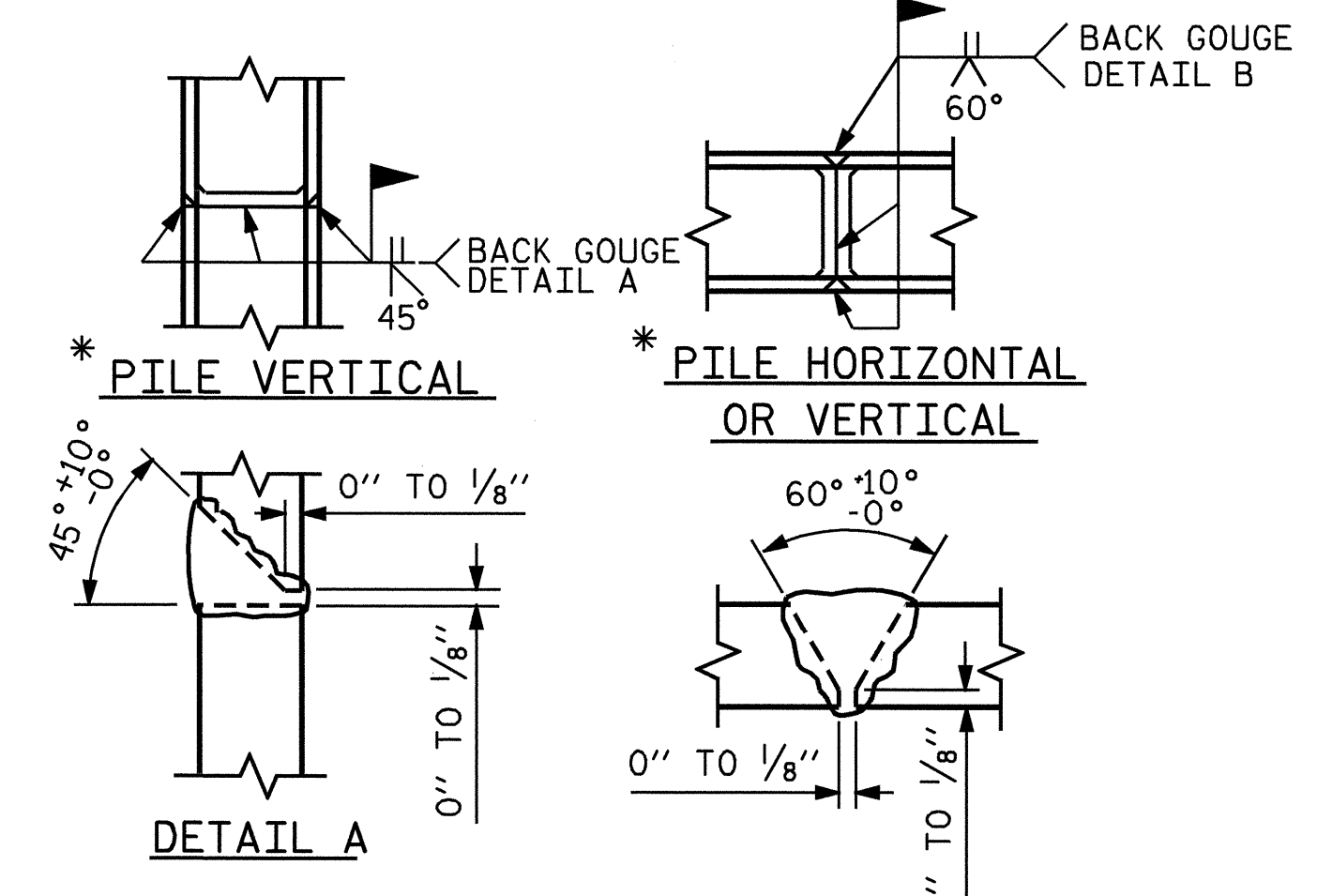
SECTION THRU CAP



VIEW Y-Y

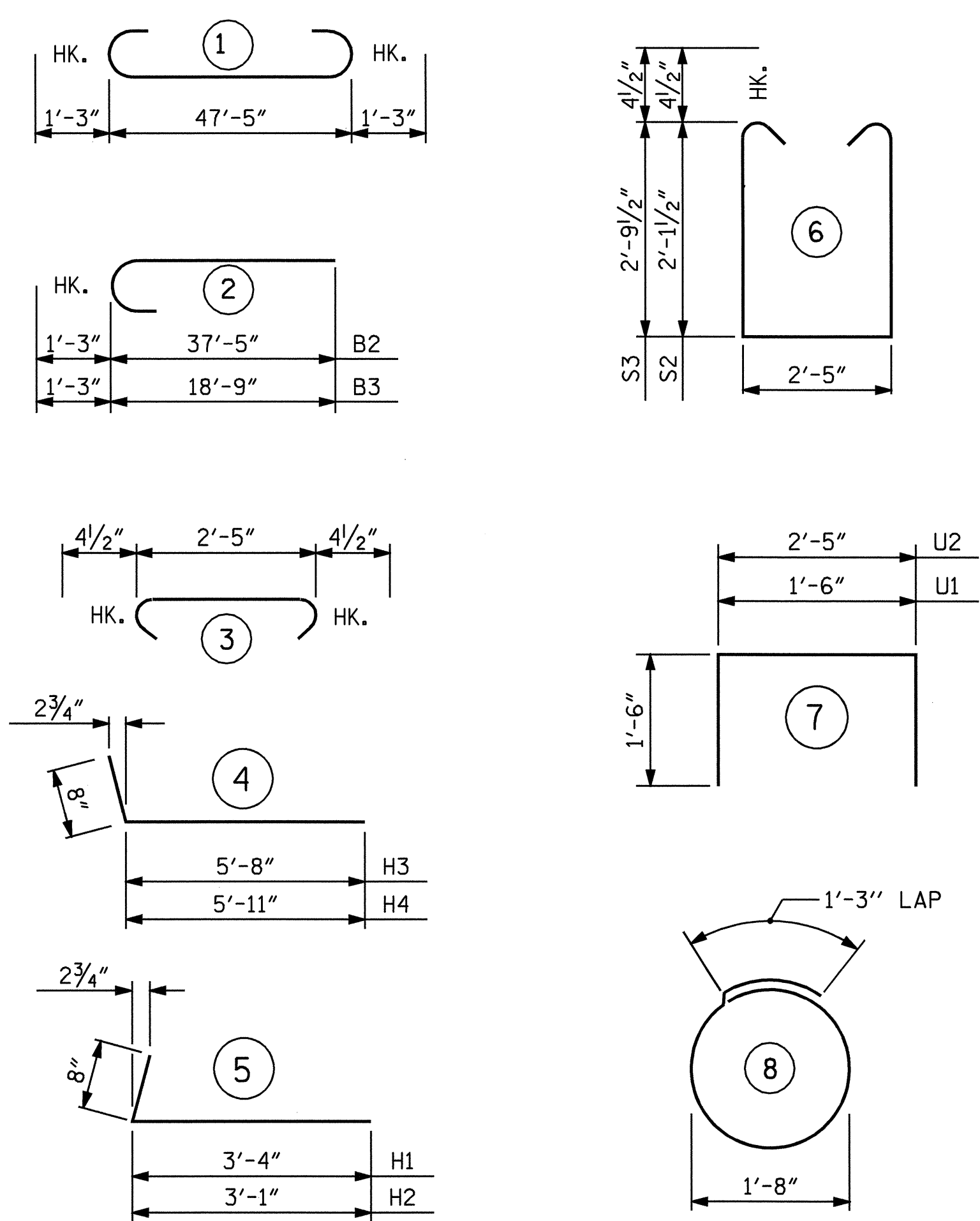
NOTE: NO SEPARATE PAYMENT WILL BE MADE FOR FURNISHING AND INSTALLING THE PVC PLASTIC PIPE DRAINS, HARDWARE CLOTH AND FASTENERS. THE ENTIRE COST OF THIS WORK SHALL BE INCLUDED IN THE UNIT CONTRACT PRICE BID FOR THE SEVERAL PAY ITEMS.

**PIPE DRAIN DETAILS**



\* POSITION OF PILE DURING WELDING.

**PILE SPLICE DETAILS**



ALL BAR DIMENSIONS ARE OUT TO OUT.

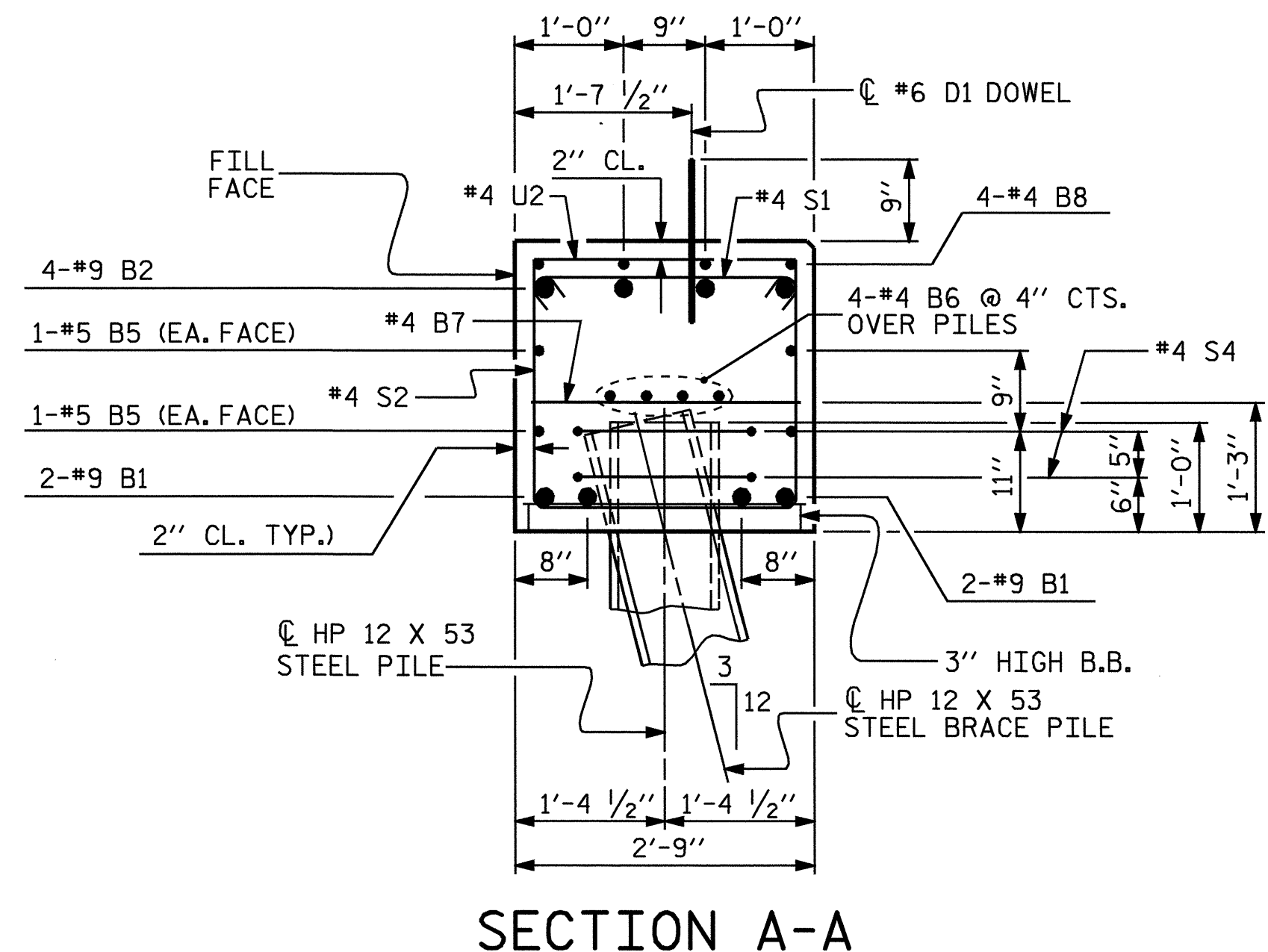
**BILL OF MATERIAL**

END BENT 2					
BAR	NO	SIZE	TYPE	LENGTH	WEIGHT
B1	4	9	1	49'-11"	679
B2	4	9	2	38'-8"	526
B3	4	9	2	20'-0"	272
B4	2	5	STR	13'-1"	27
B5	4	5	STR	47'-7"	199
B6	8	4	STR	25'-0"	134
B7	12	4	STR	2'-5"	19
B8	4	4	STR	18'-0"	48
B9	4	4	STR	8'-0"	21
D1	26	6	STR	1'-6"	59
H1	6	4	5	4'-0"	16
H2	6	4	5	3'-9"	15
H3	7	4	4	6'-4"	30
H4	7	4	4	6'-7"	31
K1	12	4	STR	2'-9"	22
S1	42	4	3	3'-2"	89
S2	25	4	6	7'-5"	124
S3	17	4	6	8'-8"	98
S4	12	4	8	6'-6"	52
U1	4	4	7	4'-6"	12
U2	18	4	7	5'-5"	65
V1	16	4	STR	4'-5"	47
V2	22	4	STR	5'-3"	77
REINFORCING STEEL			LBS.		2662

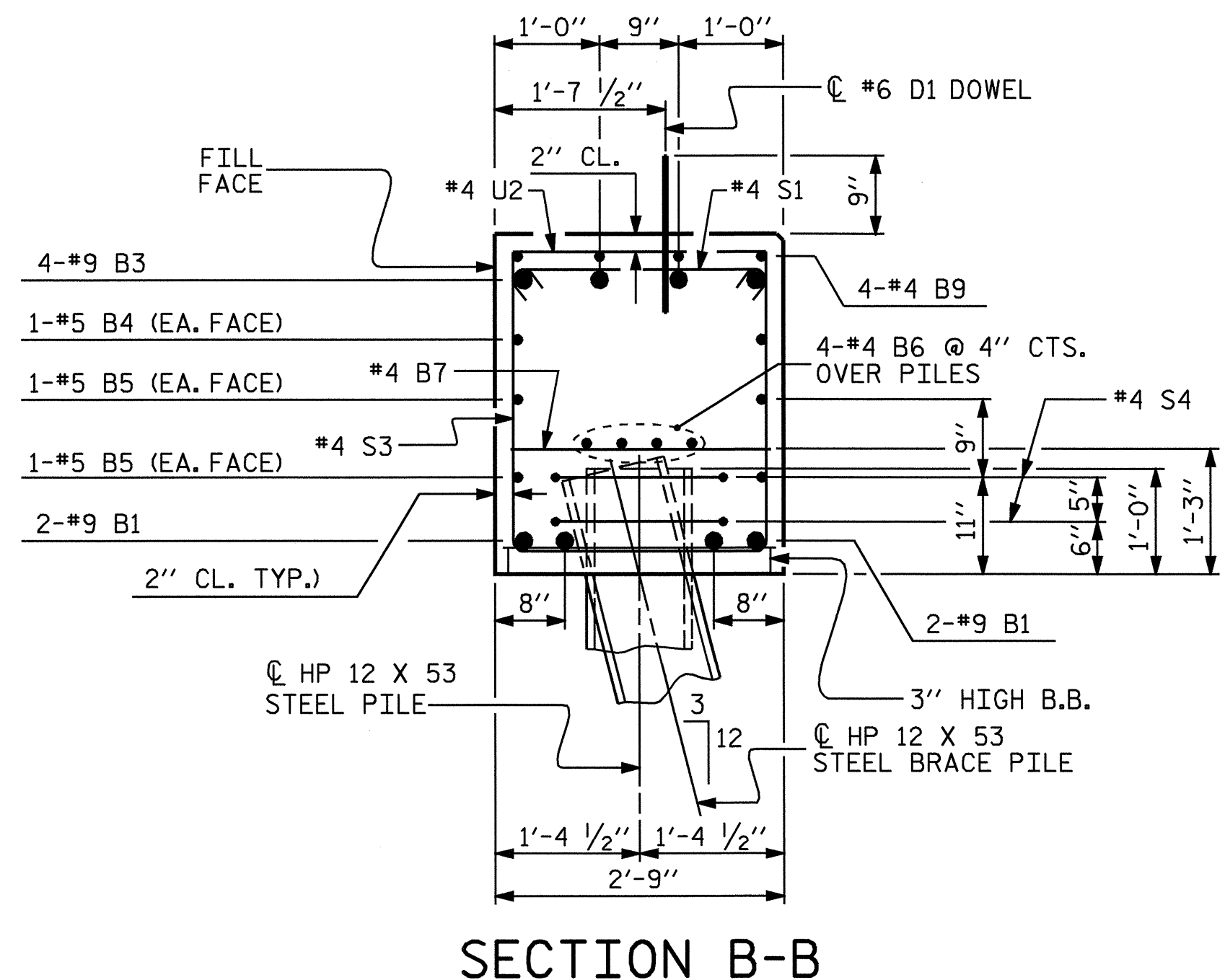
CLASS A CONCRETE BREAKDOWN

POUR #1 (CAP, LOWER PART OF WINGS)	15.7 C.Y.
POUR #2 (UPPER PART OF WINGS)	1.1 C.Y.
POUR #3 (LATERAL GUIDE)	0.1 C.Y.
<b>TOTAL CLASS A CONCRETE</b>	<b>16.9 C.Y.</b>

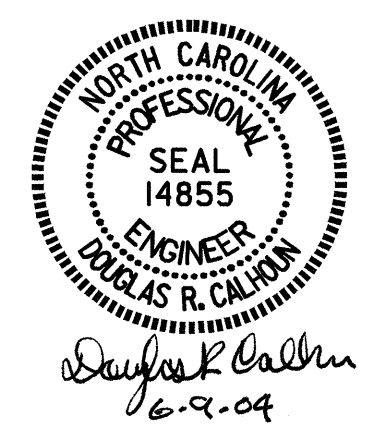
HP 12 X 53 STEEL PILES NO. 6	180 LIN.FT.
------------------------------	-------------



SECTION A-A



SECTION B-B



PROJECT NO. B-3884  
ONslow COUNTY  
 STATION: 14+89.75 -L-  
 SHEET 3 OF 3

STATE OF NORTH CAROLINA DEPARTMENT OF TRANSPORTATION RALEIGH					
SUBSTRUCTURE END BENT 2					
REVISIONS					
NO.	BY:	DATE:	NO.	BY:	DATE:
1			3		
2			4		

SHEET NO.	
S-19	TOTAL SHEETS 23