

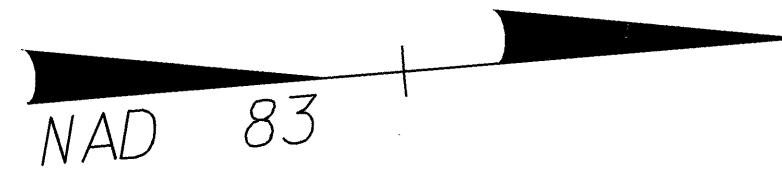
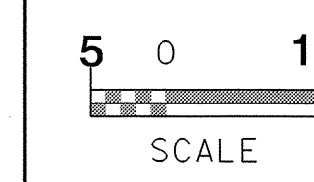
PROJECT REFERENCE NO. U-2734 SHEET NO. UC-2

DESIGNED BY: MRB
 DRAWN BY: MRB
 CHECKED BY: RBW
 APPROVED BY: RBW
 REVISED:

NORTH CAROLINA PROFESSIONAL ENGINEER
 ARNOLD B. WILKINS
 0157

NORTH CAROLINA DEPARTMENT OF TRANSPORTATION
 DESIGN SERVICES UNIT
 PHONE: (919) 250-4128
 FAX: (919) 250-4119

UTILITY CONSTRUCTION PLANS ONLY



-L- STA.13+10.000 BEGIN F.A. PROJECT NHF-1409 (3)
 -L- STA.13+10.000 BEGIN STATE PROJECT U-2734

RIS REAL ESTATE-CONST., INC.
 201
 PG 329
 PG 212

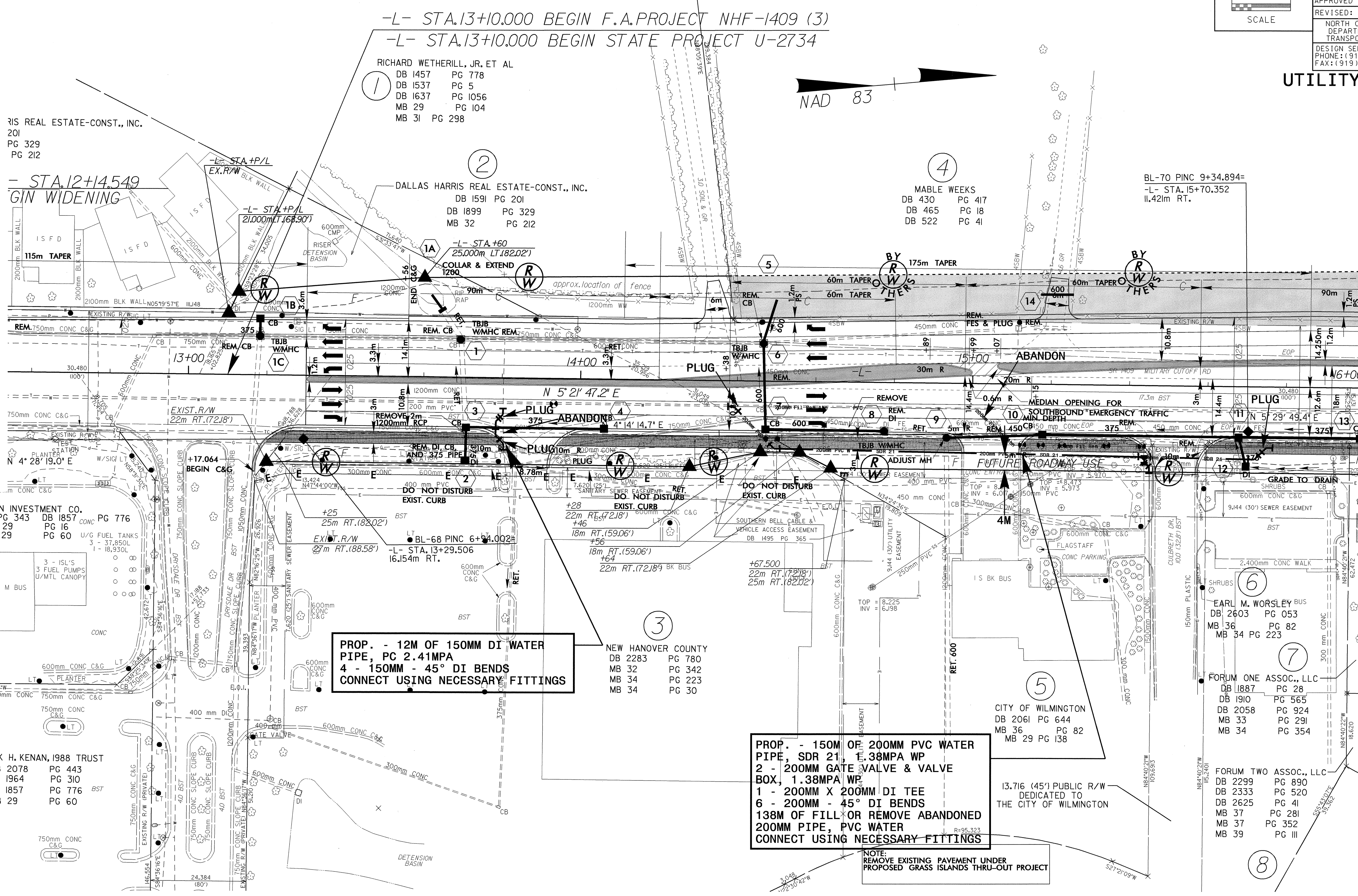
RICHARD WETHERILL, JR. ET AL
 DB 1457 PG 778
 DB 1537 PG 5
 DB 1637 PG 1056
 MB 29 PG 104
 MB 31 PG 298

DALLAS HARRIS REAL ESTATE-CONST., INC.
 DB 1591 PG 201
 DB 1899 PG 329
 MB 32 PG 212

MABLE WEEKS
 DB 430 PG 417
 DB 465 PG 18
 DB 522 PG 41

BL-70 PINC 9+34.894=
 -L- STA. 15+70.352
 11.421m RT.

- STA.12+14.549
 GIN WIDENING



PROP. - 12M OF 150MM DI WATER PIPE, PC 2.41MPA
 4 - 150MM - 45° DI BENDS
 CONNECT USING NECESSARY FITTINGS

NEW HANOVER COUNTY
 DB 2283 PG 780
 MB 32 PG 342
 MB 34 PG 223
 MB 34 PG 30

PROP. - 150M OF 200MM PVC WATER PIPE, SDR 21, T.38MPA WP
 2 - 200MM GATE VALVE & VALVE BOX, 1.38MPA WP
 1 - 200MM X 200MM DI TEE
 6 - 200MM - 45° DI BENDS
 138M OF FILL OR REMOVE ABANDONED 200MM PIPE, PVC WATER
 CONNECT USING NECESSARY FITTINGS

NOTE:
 REMOVE EXISTING PAVEMENT UNDER PROPOSED GRASS ISLANDS THRU-OUT PROJECT

CAMERON INVESTMENT CO.
 DB 1848 PG 343 DB 1857 PG 776
 MB 29 PG 16 MB 29 PG 60

FRANK H. KENAN, 1988 TRUST
 DB 2078 PG 443
 DB 1964 PG 310
 DB 1857 PG 776
 MB 29 PG 60

EARL M. WORSLEY BUS
 DB 2603 PG 053
 MB 36 PG 82
 MB 34 PG 223

FORUM ONE ASSOC., LLC
 DB 1887 PG 28
 DB 1910 PG 565
 DB 2058 PG 924
 MB 33 PG 291
 MB 34 PG 354

FORUM TWO ASSOC., LLC
 DB 2299 PG 890
 DB 2333 PG 520
 DB 2625 PG 41
 MB 37 PG 281
 MB 37 PG 352
 MB 39 PG III

MATCHLINE SEE SHEET UC-3

18-NOV-2003 08:45 R:\LIC\2003\0845\U-2734_4\UC2.dwg:afsh:afsh