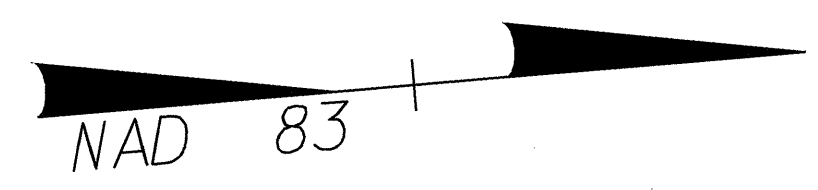


4A
 BRODY ZIMMER, LLC
 DB 2891 PG 422



PROP. - 20M OF 200MM DI WATER PIPE, PC 2.41MPA
 4 - 200MM - 45° DI BENDS
 CONNECT USING NECESSARY FITTINGS

-L-
 PI Sta. 20+59.186
 $\Delta = 1^{\circ}56'02.5''$ (LT)
 $L = 117.974$
 $T = 58.992$
 $R = 3,495.000$
 $SE = NC$

PROP. - 20M OF 200MM DI WATER PIPE, PC 2.41MPA
 4 - 200MM - 45° DI BENDS
 CONNECT USING NECESSARY FITTINGS

PROP. - 6M OF 250MM DI SEWER PIPE, CLASS 52 (REPLACE EXIST. PVC SEWER PIPE AT SAME ALIGNMENT AND ELEVATION)

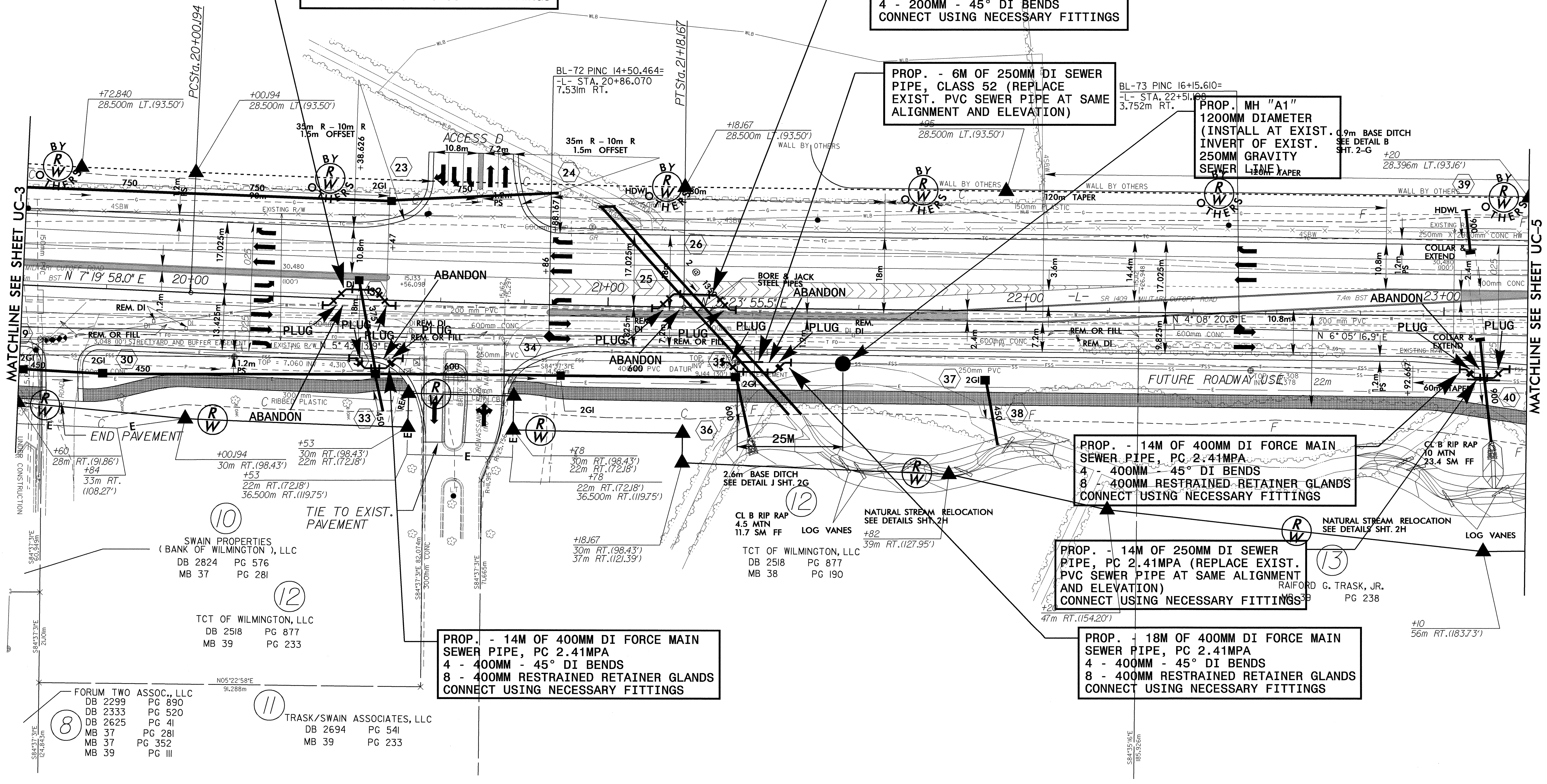
PROP. MH "A1" 1200MM DIAMETER (INSTALL AT EXIST. 0.9m BASE DITCH INVERT OF EXIST. 250MM GRAVITY SEWER LINE TAPER)

PROP. - 14M OF 400MM DI FORCE MAIN SEWER PIPE, PC 2.41MPA
 4 - 400MM - 45° DI BENDS
 8 - 400MM RESTRAINED RETAINER GLANDS
 CONNECT USING NECESSARY FITTINGS

PROP. - 14M OF 250MM DI SEWER PIPE, PC 2.41MPA (REPLACE EXIST. PVC SEWER PIPE AT SAME ALIGNMENT AND ELEVATION)
 CONNECT USING NECESSARY FITTINGS

PROP. - 18M OF 400MM DI FORCE MAIN SEWER PIPE, PC 2.41MPA
 4 - 400MM - 45° DI BENDS
 8 - 400MM RESTRAINED RETAINER GLANDS
 CONNECT USING NECESSARY FITTINGS

PROP. - 14M OF 400MM DI FORCE MAIN SEWER PIPE, PC 2.41MPA
 4 - 400MM - 45° DI BENDS
 8 - 400MM RESTRAINED RETAINER GLANDS
 CONNECT USING NECESSARY FITTINGS



MATCHLINE SEE SHEET UC-3

MATCHLINE SEE SHEET UC-5

P:\NOV_2005_089500_Nuz2734_6_LUC4_ut_psh.dgn
 RAJ:11/11/05 11:11:11 AM 11/11/05 11:11:11 AM