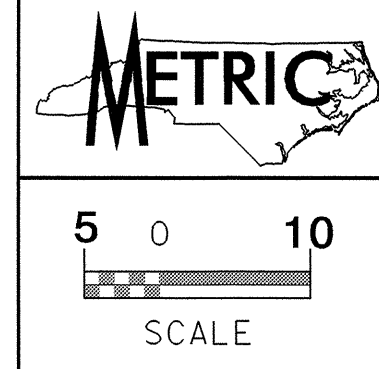


042597
P:\NOV\2013\0301\10_UCB.ctb
R:\Users\jz\My Documents\2734_10_UCB.ctb
11/14/13 10:23:21 AM

BRODY ZIMMER, LLC
DB 2891 PG 422



PROJECT REFERENCE NO.	SHEET NO.
U-2734	UC-8
DESIGNED BY: MRB	
DRAWN BY: MRB	
CHECKED BY: RBW	
APPROVED BY: RBW	
REVISED:	
NORTH CAROLINA DEPARTMENT OF TRANSPORTATION DESIGN SERVICES UNIT PHONE: (919)250-4128 FAX: (919)250-4119 UTILITY CONSTRUCTION PLANS ONLY	

NAD 83

4A
 PROP. - 14M OF 200MM DI WATER PIPE, PC 2.41MPA
 4 - 200MM - 45° DI BENDS
 CONNECT USING NECESSARY FITTINGS

PROP. - 32M OF 200MM DI WATER PIPE, PC 2.41MPA
 4 - 200MM - 45° DI BENDS
 CONNECT USING NECESSARY FITTINGS

PROP. - 14M OF 20MM COPPER WATER PIPE, TYPE K
 1 - RELOCATE EXIST. WATER METER
 CONNECT USING NECESSARY FITTINGS

-L-
 PI Sta. 35+26.422
 $\Delta = 5'18"10.7" (LT)$
 $L = 323.478$
 $T = 161.854$
 $R = 3,495.000$
 $SE = NC$

PROP. - 120M OF 400MM DI FORCE MAIN SEWER PIPE, PC 2.41MPA
 4 - 400MM - 45° DI BENDS
 8 - 400MM RESTRAINED RETAINER GLANDS
 112M OF FILL OR REMOVE ABANDONED 400MM PIPE, PVC SEWER
 CONNECT USING NECESSARY FITTINGS

PROP. - 18M OF 400MM DI FORCE MAIN SEWER PIPE, PC 2.41MPA
 4 - 400MM - 45° DI BENDS
 8 - 400MM RESTRAINED RETAINER GLANDS
 1 - 50MM AIR RELEASE/VACUUM VALVE & MANHOLE
 CONNECT USING NECESSARY FITTINGS

PROP. - 1 - BREAK DOWN, PLUG, & FILL ABANDONED UTILITY MANHOLE

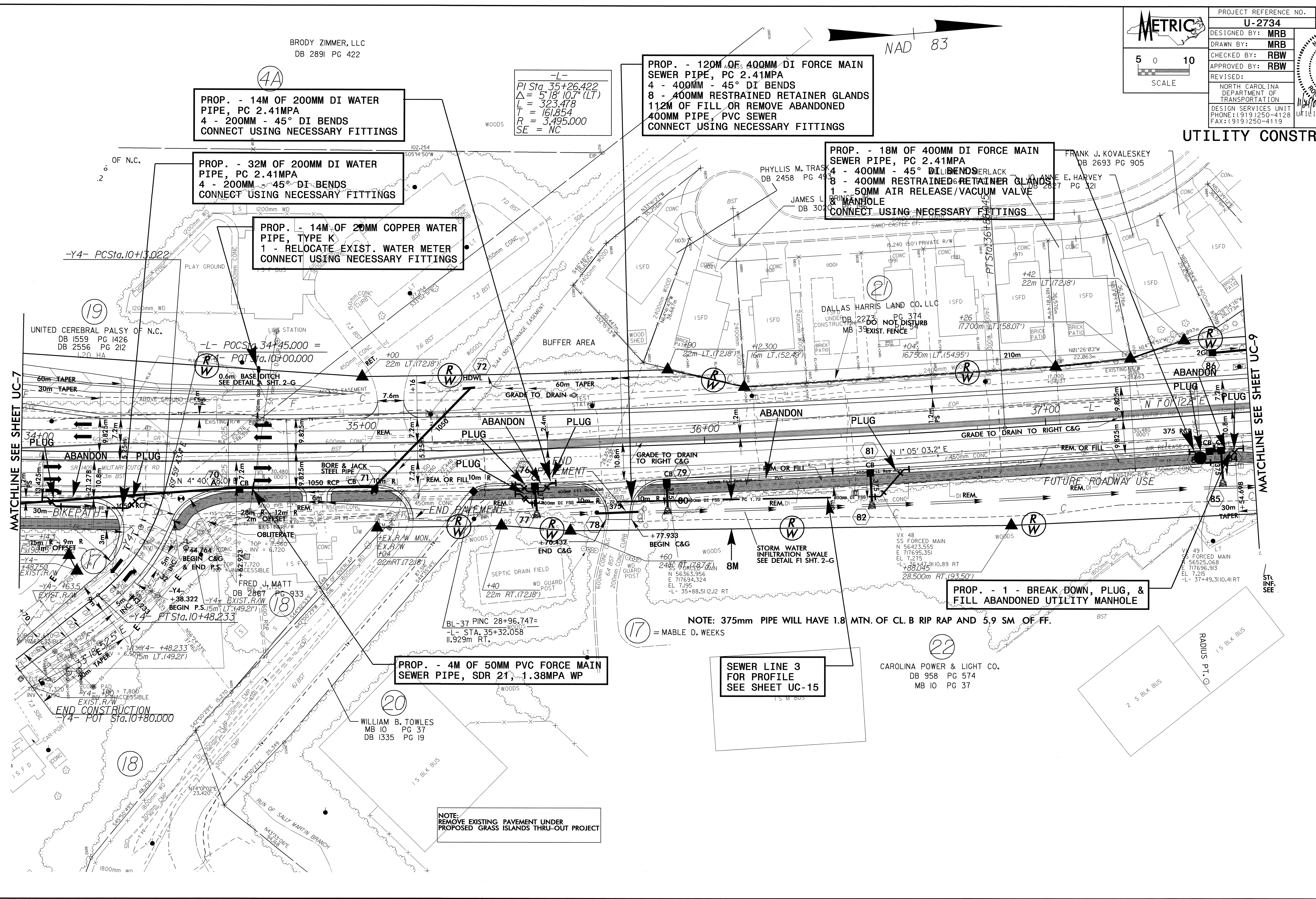
PROP. - 4M OF 50MM PVC FORCE MAIN SEWER PIPE, SDR 21, 1.38MPA WP

SEWER LINE 3 FOR PROFILE SEE SHEET UC-15

NOTE: REMOVE EXISTING PAVEMENT UNDER PROPOSED GRASS ISLANDS THRU-OUT PROJECT

NOTE: 375mm PIPE WILL HAVE 1.8 MTN. OF CL. B RIP RAP AND 5.9 SM OF FF.
 17 = MABLE D. WEEKS

22
 CAROLINA POWER & LIGHT CO.
 DB 958 PG 574
 MB 10 PG 37



UTILITY CONSTRUCTION