
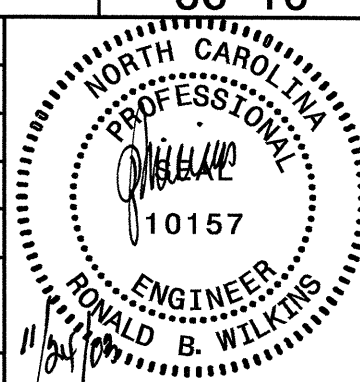


042597

 5 0 10 SCALE	PROJECT REFERENCE NO.	SHEET NO.
	U-2734	UC-10
DESIGNED BY: MRB DRAWN BY: MRB CHECKED BY: RBW APPROVED BY: RBW REVISED:		
		
NORTH CAROLINA DEPARTMENT OF TRANSPORTATION DESIGN SERVICES UNIT PHONE: (919)250-4128 FAX: (919)250-4119		

UTILITY CONSTRUCTION

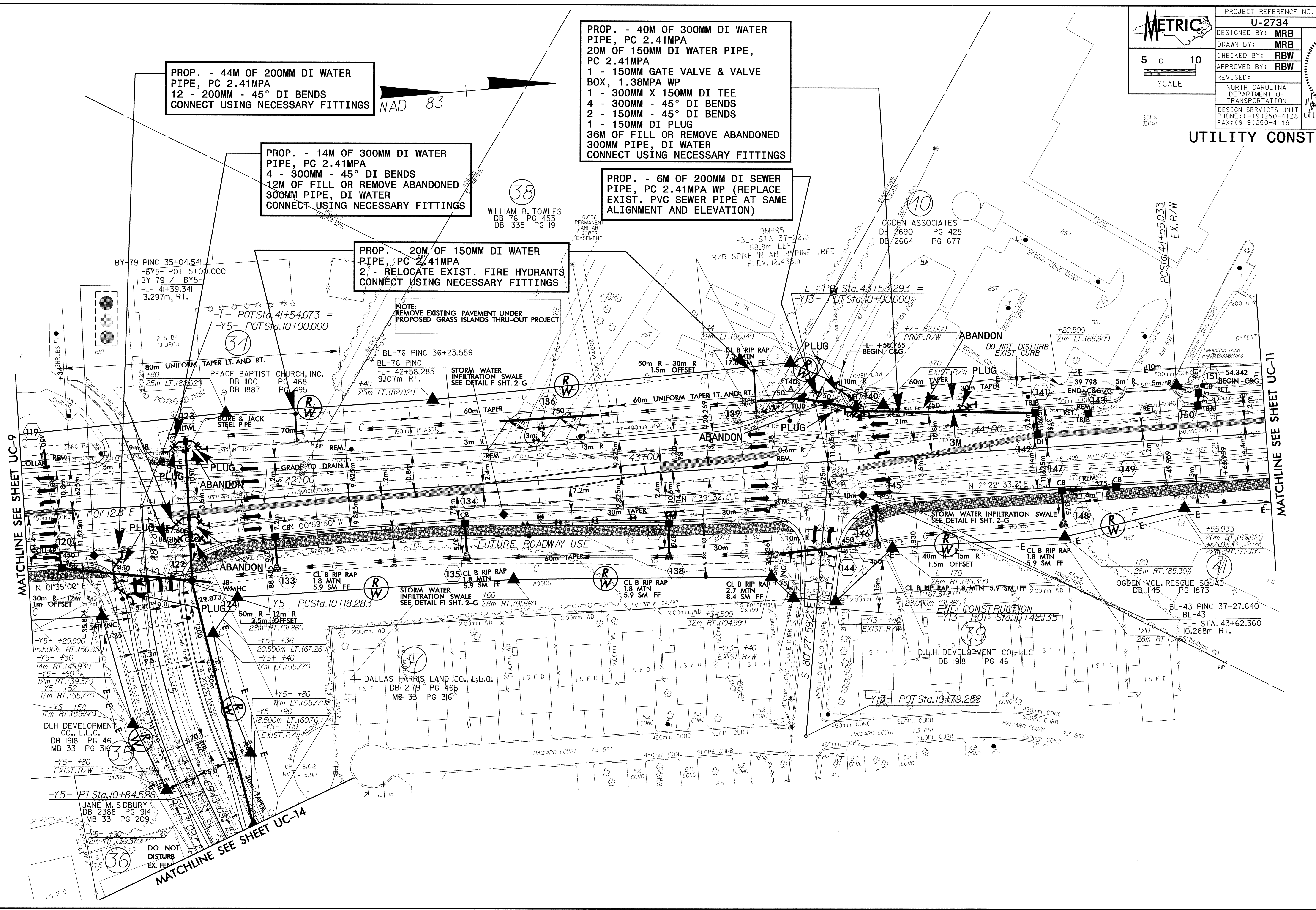
PROP. - 40M OF 300MM DI WATER PIPE, PC 2.41MPA
 20M OF 150MM DI WATER PIPE, PC 2.41MPA
 1 - 150MM GATE VALVE & VALVE BOX, 1.38MPA WP
 1 - 300MM X 150MM DI TEE
 4 - 300MM - 45° DI BENDS
 2 - 150MM - 45° DI BENDS
 1 - 150MM DI PLUG
 36M OF FILL OR REMOVE ABANDONED 300MM PIPE, DI WATER
 CONNECT USING NECESSARY FITTINGS

PROP. - 44M OF 200MM DI WATER PIPE, PC 2.41MPA
 12 - 200MM - 45° DI BENDS
 CONNECT USING NECESSARY FITTINGS

PROP. - 14M OF 300MM DI WATER PIPE, PC 2.41MPA
 4 - 300MM - 45° DI BENDS
 12M OF FILL OR REMOVE ABANDONED 300MM PIPE, DI WATER
 CONNECT USING NECESSARY FITTINGS

PROP. - 20M OF 150MM DI WATER PIPE, PC 2.41MPA
 2 - RELOCATE EXIST. FIRE HYDRANTS
 CONNECT USING NECESSARY FITTINGS

PROP. - 6M OF 200MM DI SEWER PIPE, PC 2.41MPA WP (REPLACE EXIST. PVC SEWER PIPE AT SAME ALIGNMENT AND ELEVATION)



9-NOV-2003 10:01 AM
 R:\U11\12734\12-UC10\ut_pwb.dgn
 mbr:rbw