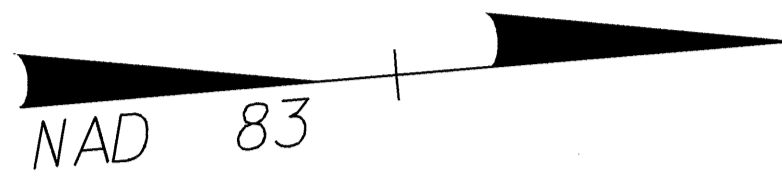


**UTILITIES BY OTHERS**

NOTE:  
ALL PROPOSED UTILITY WORK  
SHOWN ON THIS SHEET WILL  
BE DONE BY OTHERS



-L- STA.13+10.000 BEGIN F.A.PROJECT NHF-1409 (3)  
-L- STA.13+10.000 BEGIN STATE PROJECT U-2734

RIS REAL ESTATE-CONST., INC.  
201  
PG 329  
PG 212

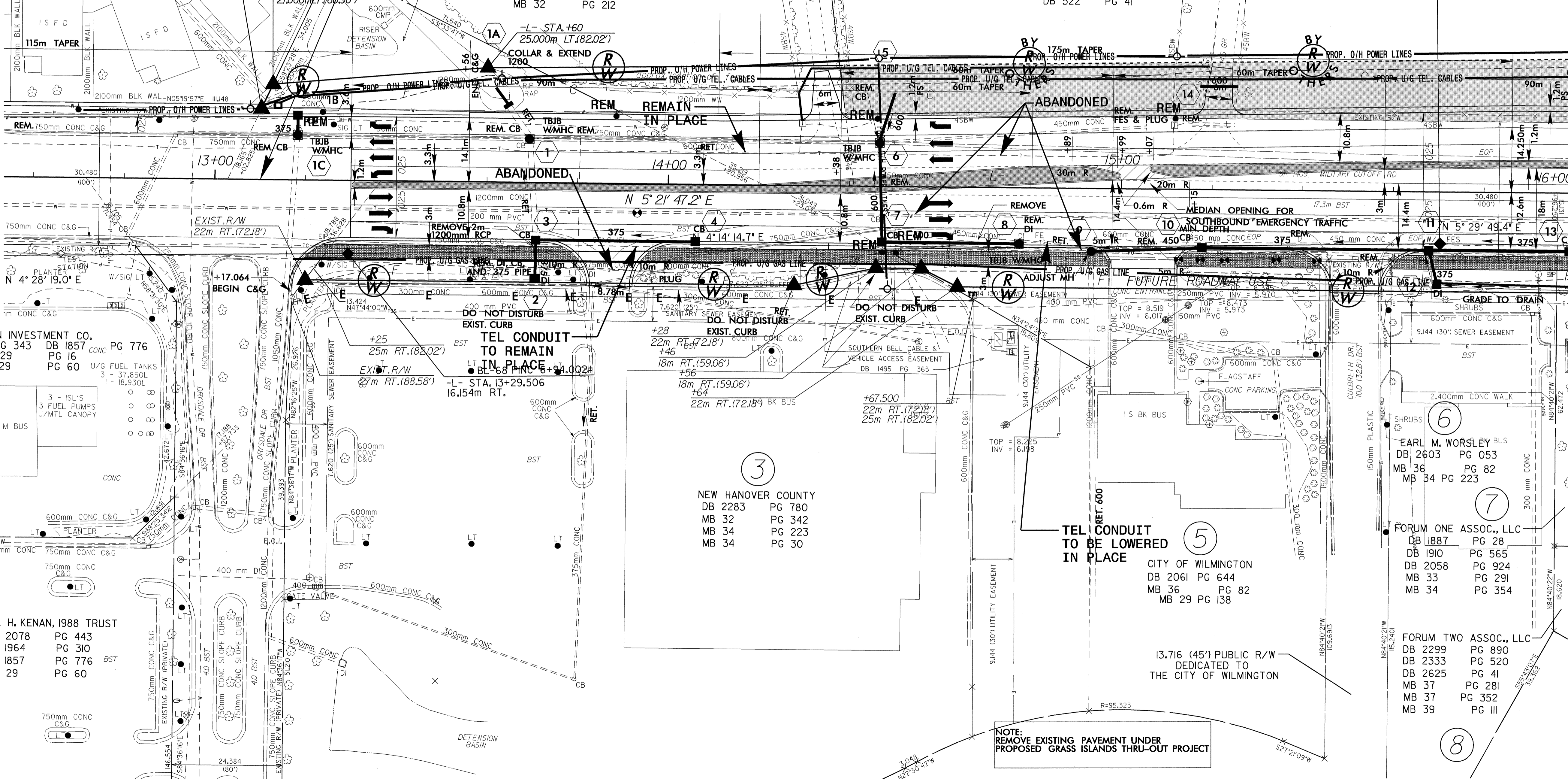
RICHARD WETHERILL, JR. ET AL  
DB 1457 PG 778  
DB 1537 PG 5  
DB 1637 PG 1056  
MB 29 PG 104  
MB 31 PG 298

DALLAS HARRIS REAL ESTATE-CONST., INC.  
DB 1591 PG 201  
DB 1899 PG 329  
MB 32 PG 212

MABLE WEEKS  
DB 430 PG 417  
DB 465 PG 18  
DB 522 PG 41

BL-70 PINC 9+34.894=  
-L- STA.15+70.352  
11.421m RT.

- STA.12+14.549  
GIN WIDENING



CAMERON INVESTMENT CO.  
DB 1848 PG 343  
MB 29 PG 16  
MB 29 PG 60

TEL CONDUIT  
TO REMAIN  
IN PLACE  
BL-68 PINC 5+51.002=  
-L- STA.13+29.506  
16.154m RT.

NEW HANOVER COUNTY  
DB 2283 PG 780  
MB 32 PG 342  
MB 34 PG 223  
MB 34 PG 30

TEL CONDUIT  
TO BE LOWERED  
IN PLACE  
CITY OF WILMINGTON  
DB 2061 PG 644  
MB 36 PG 82  
MB 29 PG 138

EARL M. WORSLEY BUS  
DB 2603 PG 053  
MB 36 PG 82  
MB 34 PG 223

FORUM ONE ASSOC., LLC  
DB 1887 PG 28  
DB 1910 PG 565  
DB 2058 PG 924  
MB 33 PG 291  
MB 34 PG 354

FORUM TWO ASSOC., LLC  
DB 2299 PG 890  
DB 2333 PG 520  
DB 2625 PG 41  
MB 37 PG 281  
MB 37 PG 352  
MB 39 PG III

FRANK H. KENAN, 1988 TRUST  
DB 2078 PG 443  
DB 1964 PG 310  
DB 1857 PG 776  
MB 29 PG 60

NOTE:  
REMOVE EXISTING PAVEMENT UNDER  
PROPOSED GRASS ISLANDS THRU-OUT PROJECT

MATCHLINE SEE SHEET UO-2

042457  
05 DEC 2003 10:56  
R:\u0131\proj\2734\_4\UO1\ut\_esh.dgn  
mbright AT 15:22:21