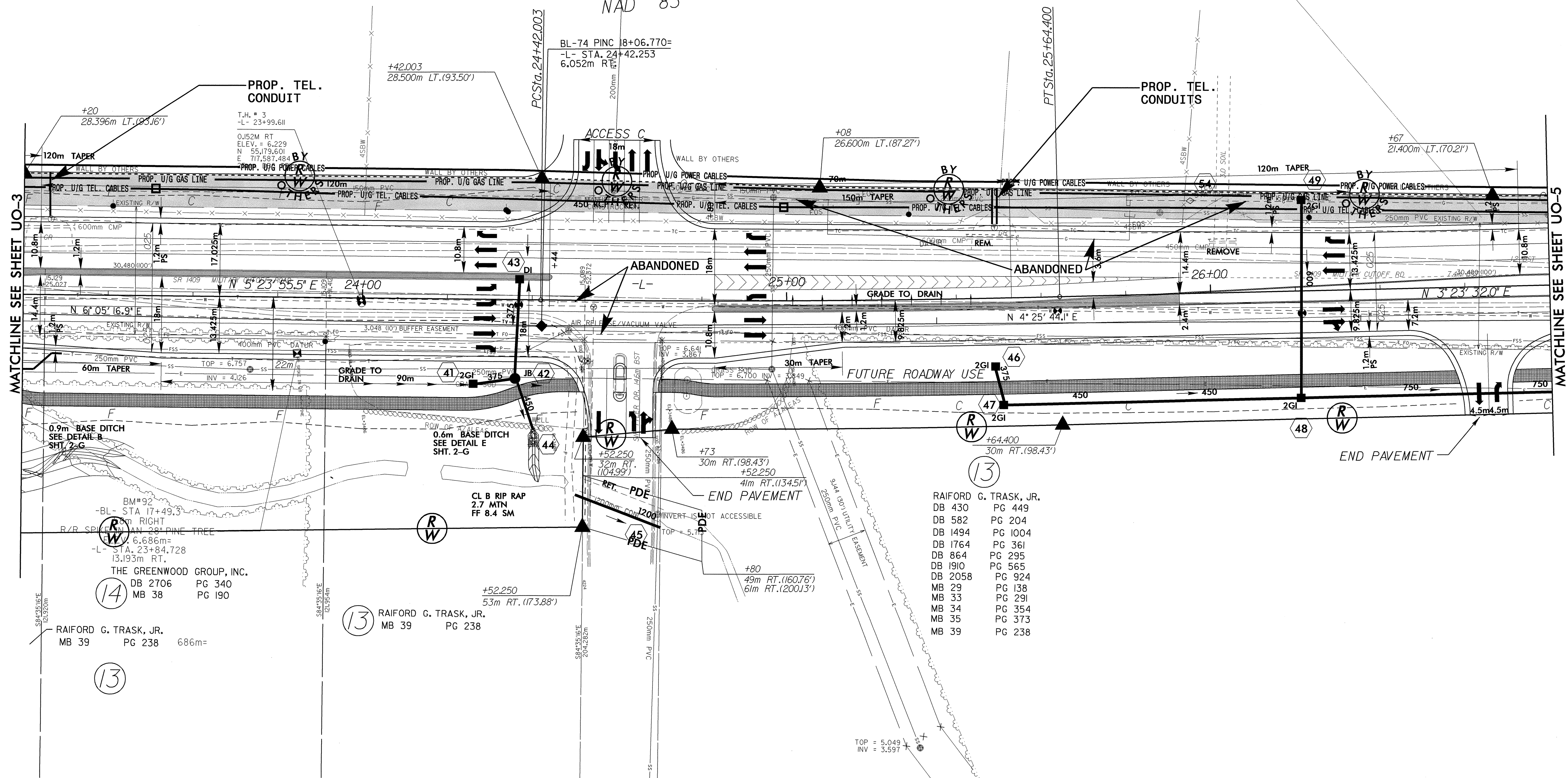
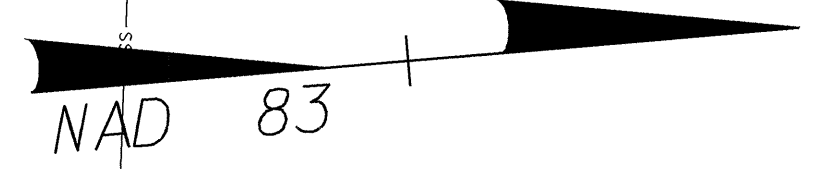


NOTE:
 ALL PROPOSED UTILITY WORK
 SHOWN ON THIS SHEET WILL
 BE DONE BY OTHERS

4A
 BRODY ZIMMER, LLC
 DB 2891 PG 422

-L-
 PI Sta. 25+03.208
 $\Delta = 2^{\circ}00'23.5''$ (LT)
 $L = 122.397$
 $T = 61.205$
 $R = 3,495.000$
 SE = NC



MATCHLINE SEE SHEET UO-3

MATCHLINE SEE SHEET UO-5

- RAIFORD G. TRASK, JR.
 DB 430 PG 449
 DB 582 PG 204
 DB 1494 PG 1004
 DB 1764 PG 361
 DB 864 PG 295
 DB 1910 PG 565
 DB 2058 PG 924
 MB 29 PG 138
 MB 33 PG 291
 MB 34 PG 354
 MB 35 PG 373
 MB 39 PG 238

14
 THE GREENWOOD GROUP, INC.
 DB 2706 PG 340
 MB 38 PG 190

13
 RAIFORD G. TRASK, JR.
 MB 39 PG 238

13
 RAIFORD G. TRASK, JR.
 MB 39 PG 238 686m=

042597
 05-SEC-2005-165
 R:\U\2734\UO-4\UO-4.dwg
 11/11/05 11:15:45 AM
 mbr:right