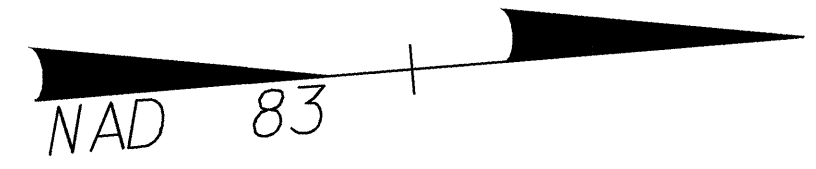


UTILITIES BY OTHERS

NOTE: ALL PROPOSED UTILITY WORK SHOWN ON THIS SHEET WILL BE DONE BY OTHERS

NOTE: REMOVE EXISTING PAVEMENT UNDER PROPOSED GRASS ISLANDS THRU-OUT PROJECT

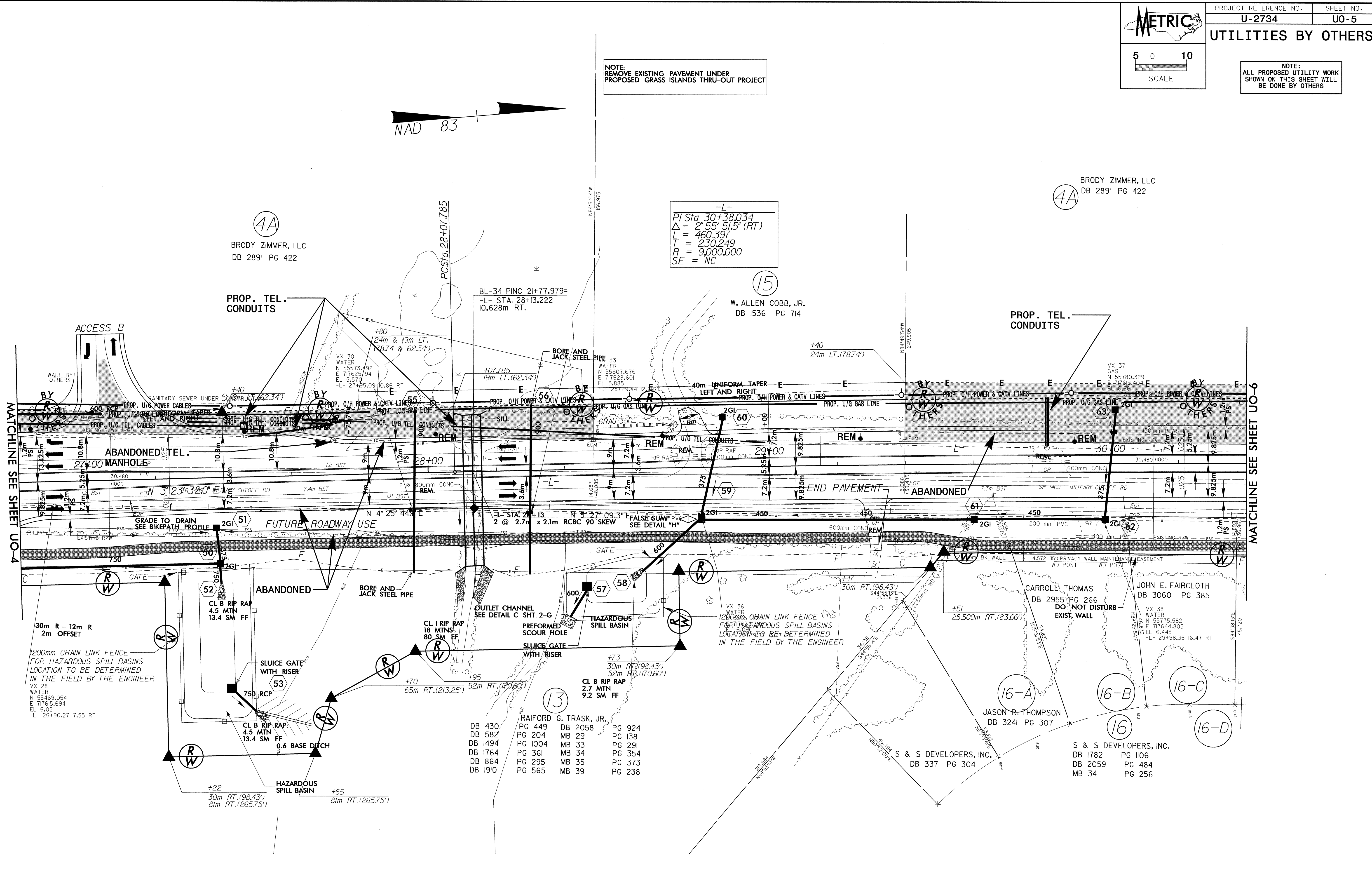


4A BRODY ZIMMER, LLC DB 2891 PG 422

-L- PI Sta. 30+38.034 Δ = 2° 55' 51.5" (RT) L = 460.397 T = 230.249 R = 9,000.000 SE = NC

15 W. ALLEN COBB, JR. DB 1536 PG 714

4A BRODY ZIMMER, LLC DB 2891 PG 422



MATCHLINE SEE SHEET UO-4

MATCHLINE SEE SHEET UO-6

RAIFORD G. TRASK, JR. DB 430 PG 449 DB 2058 PG 924 DB 582 PG 204 MB 29 PG 138 DB 1494 PG 1004 MB 33 PG 291 DB 1764 PG 361 MB 34 PG 354 DB 864 PG 295 MB 35 PG 373 DB 1910 PG 565 MB 39 PG 238

JASON R. THOMPSON DB 3241 PG 307

S & S DEVELOPERS, INC. DB 1782 PG 1106 DB 2059 PG 484 MB 34 PG 256

CARROLL THOMAS DB 2955 PG 266 DO NOT DISTURB EXIST. WALL

JOHN E. FAIRCLOTH DB 3060 PG 385

1200mm CHAIN LINK FENCE FOR HAZARDOUS SPILL BASINS LOCATION TO BE DETERMINED IN THE FIELD BY THE ENGINEER

1200mm CHAIN LINK FENCE FOR HAZARDOUS SPILL BASINS LOCATION TO BE DETERMINED IN THE FIELD BY THE ENGINEER

042527 08\_585-2013\_1059 R:\U0\1105\1105\U02734-8\_U05.ut\_eah.dgn