

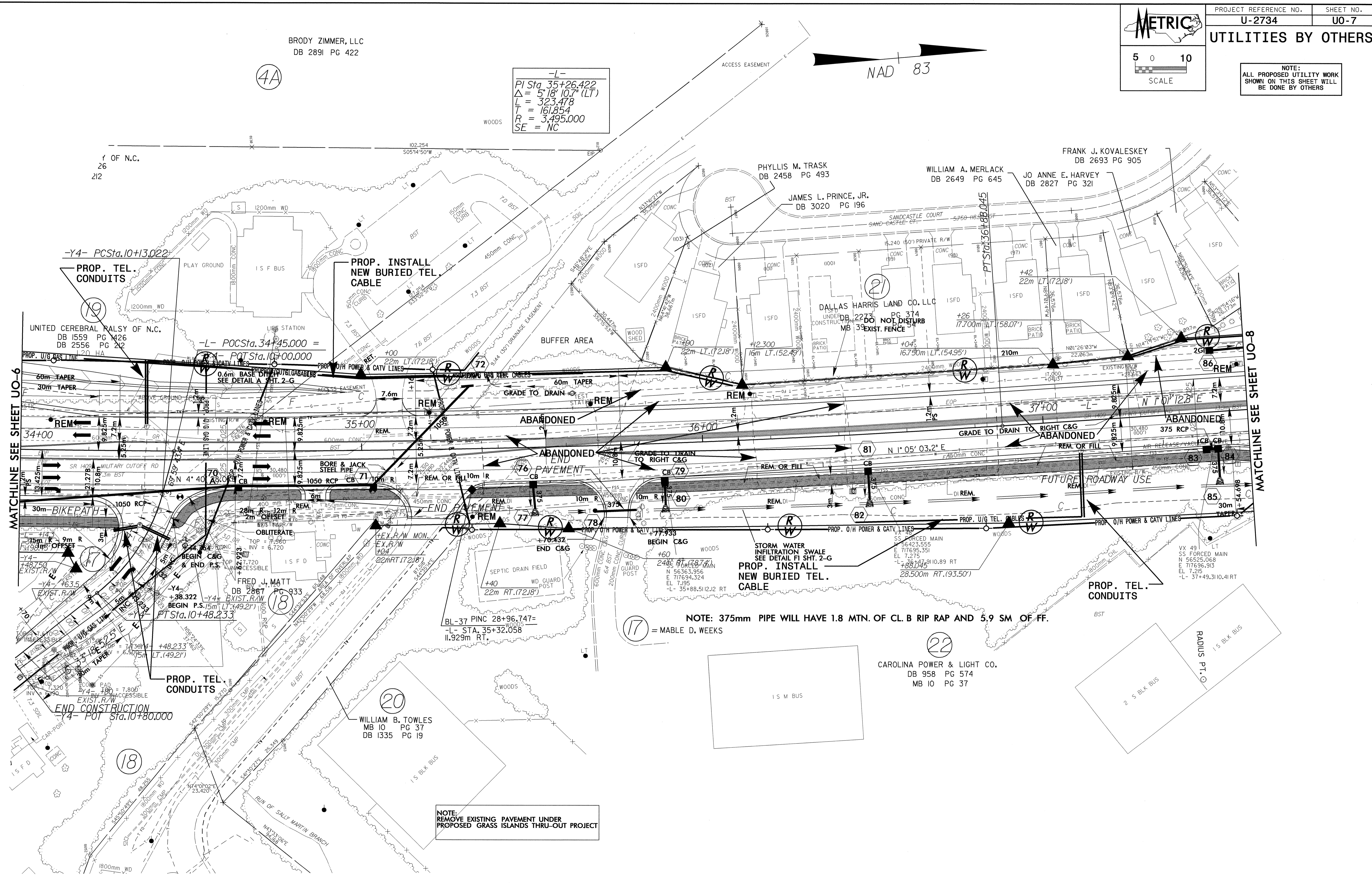
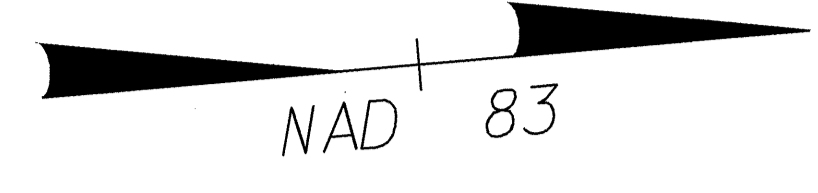
UTILITIES BY OTHERS

NOTE: ALL PROPOSED UTILITY WORK SHOWN ON THIS SHEET WILL BE DONE BY OTHERS

BRODY ZIMMER, LLC
DB 2891 PG 422

4A

-L-
PI Sta. 35+26.422
Δ = 5' 18" 10.7" (LT)
L = 323.478
T = 161.854
R = 3,495.000
SE = NC



MATCHLINE SEE SHEET UO-6

MATCHLINE SEE SHEET UO-8

NOTE: 375mm PIPE WILL HAVE 1.8 MTN. OF CL. B RIP RAP AND 5.9 SM OF FF.
17 = MABLE D. WEEKS

NOTE: REMOVE EXISTING PAVEMENT UNDER PROPOSED GRASS ISLANDS THRU-OUT PROJECT

22
CAROLINA POWER & LIGHT CO.
DB 958 PG 574
MB 10 PG 37

20
WILLIAM B. TOWLES
MB 10 PG 37
DB 1335 PG 19

18
PROP. TEL. CONDUITS

03-DEC-2003 10:56
R:\Utilities\UO-7\UO-7.dwg
MB 10 PG 37